

# ABRASIVE



**Index**

**Grinders** . . . . . 44 – 53, 57  
**Trim Saw** . . . . . 54  
**Material Removal Tool** . . . . . 55

**Cutoff Tools** . . . . . 56 – 57  
**Abrasive Accessories** . . . . . 58

# ABRASIVE

## Make Easy Work Out Of A Daily Grind

As manufacturing materials advance, so do the requirements for the tools to work on them. This means new speeds and attachments to handle the demands of increased precision and waste reduction.

### The right tool for the job

When selecting a grinder and accessories for your application, be sure to choose one with enough horsepower to drive the abrasive wheel you are using. This will allow the grinder's speed to work for you. When the operator bears down on an under-powered tool, it slows the rpm output and reduces overall efficiency.



### Industrial Grinders

Sioux has a great selection of inline and right angle grinders with collet sizes from 1/4" to 1/2" & 3 mm – 8 mm for a variety of applications. Speeds range up to 25,000 rpm to get the job done quickly and efficiently. Some models offer a choice of throttle control that is most convenient and comfortable for the operator. We also have extended models that fit into tight, hard to reach places.

### Abrasive Grinders Principles of Operation

When wheels, pads or other accessories are attached to the spindle, the tool can be used to remove metal or composites in a variety of ways.

### Abrasive Safety

Grinders can cause flying particles. Proper eye protection must be worn at all times by tools user and bystanders.

Under improper use and wear, Air grinders can cause serious injury and death. The following instructions are important and should be followed explicitly but cannot cover all contingencies. Good judgment is always required.

Using a grinder without a guard can cause injury. The grinder is to be operated with an appropriate guard at all times when a grinding wheel is used. Replace a damaged guard. The guard is to be the proper one for the wheel being used.



Damaged grinding wheels can explode. Check the wheel for damage before mounting, such as chips and cracks. Handle wheels carefully to avoid dropping or bumping. Protect wheels from extremes of temperature and humidity. Check wheels immediately after any unusual occurrence that may damage wheels.

Over speeding wheels can explode. Check the speed rating of the accessory wheels or the speed printed on the wheel. This speed must be greater than the name plate speed of the grinder/sander and the actual speed of the grinder/sander as measured with a tachometer.

Unsecured work can move violently when grinding. Secure work; use clamps or vise to hold work.

Grinders may coast for a short time after the trigger is released. Be sure tool has come to a complete stop before setting it aside.

Grinding wheels that malfunction or spin off can cause injury. Be certain that all wheel, flanges, nuts and related equipment are in good shape, the proper ones for the type and size of wheel being used, and are securely fastened.

Exploding wheels can cause injury or death. If the normal sound of the grinder changes, or if it vibrates excessively, shut it off immediately, remove the wheel, and check speed with tachometer.

Unexpected starts can cause injury. Be sure actuator is off before hooking up air.

Breathing grinding dust can cause injury. Do not breathe grinding dust. Use approved mask.

Explosions and fire can cause injury. Only grind metals if the area is free of combustible or explosive materials or vapors.

Contact with rotating grinding wheels can cause injury. Keep hands and other body parts away from grinding wheels and sanding pads and disks to prevent cutting or pinching. Wear protective clothing and gloves to protect hands.

Tools starting unexpectedly can cause injury. Always remove tool from air supply and activate trigger to bleed air line before making any adjustments, changing accessories, or doing any maintenance or service on the tool.

Flying grinding wheels or accessories can cause injury. Tighten collet securely. Match wheel or accessory shaft diameter to chuck or collet.

Exploding or flying parts can cause injury. Do not use cut off wheels or router bits with die grinders.





# STRAIGHT DIE GRINDERS



**SDG03S25**



**SDG05S23**



**SDG7S25F**



**SDG10S25F**

**Performance:**

Power: 0.3 hp (0.2 kW) – 1 hp (0.75 kW)  
 Speed: 12,000 rpm – 25,000 rpm  
 Collet Size: 1/4" & 6 mm

**Features:**

Lockoff Lever  
 Front or Rear Exhaust  
 Built-in Speed Control

**Straight Die Grinders**



Model Number	Free Speed	Weight		Length		Air Consumption		Collet Size	Exhaust
	rpm	lb	kg	in	mm	scfm	l/s		
<b>0.3 hp (0.22 kW) – Lever Throttle – 200 Series Collet</b>									
SDG03S25	25000	1.0	0.45	6.25	160	11	5.2	1/4"	Rear
SDG03S25M6	25000	1.0	0.45	6.25	160	11	5.2	6 mm	Rear
<b>0.3 hp (0.22 kW) – Lever Throttle – 300 Series Collet</b>									
SDG03S25S	25000	1.0	0.45	6.25	160	11	5.2	1/4"	Rear
SDG03S25M6S	25000	1.0	0.45	6.25	160	11	5.2	6mm	Rear
<b>0.5 hp (0.37 kW) – Lever Throttle – 200 Series Collet</b>									
SDG05S18	18000	1.2	0.54	7.0	180	23	10.9	1/4"	Rear
SDG05S18M6	18000	1.2	0.54	7.0	180	23	10.9	6 mm	Rear
SDG05S23	23000	1.2	0.54	7.0	180	23	10.9	1/4"	Rear
SDG05S23M6	23000	1.2	0.54	7.0	180	23	10.9	6 mm	Rear
<b>0.5 hp (0.37 kW) – Lever Throttle – 300 Series Collet</b>									
SDG05S18S	18000	1.2	0.54	7.0	180	23	10.9	1/4"	Rear
SDG05S18M6S	18000	1.2	0.54	7.0	180	23	10.9	6mm	Rear
SDG05S23S	23000	1.2	0.54	7.0	180	23	10.9	1/4"	Rear
SDG05S23M6S	23000	1.2	0.54	7.0	180	23	10.9	6mm	Rear
<b>0.7 hp (0.52 kW) – Lever Throttle – 200 Series Collet</b>									
SDG7S18F	18000	1.2	0.6	6.0	150	25	12	1/4"	Front
SDG7S18M6F	18000	1.2	0.6	6.0	150	25	12	6 mm	Front
SDG7S25F	25000	1.2	0.6	6.0	150	25	12	1/4"	Front
SDG7S25M6F	25000	1.2	0.6	6.0	150	25	12	6 mm	Front
<b>0.7 hp (0.52 kW) – Lever Throttle – 300 Series Collet</b>									
SDG7S18FS	18000	1.2	0.6	6.0	150	25	12	1/4"	Front
SDG7S25FS	25000	1.2	0.6	6.0	150	25	12	1/4"	Front
<b>1 hp (0.75 kW) – Lever Throttle – 200 Series Collet</b>									
SDG10S12F	12000	1.7	0.8	7.5	190	30	14	1/4"	Front
SDG10S12M6F	12000	1.7	0.8	7.5	190	30	14	6 mm	Front
SDG10S12R	12000	1.7	0.8	7.5	190	30	14	1/4"	Rear
SDG10S12M6R	12000	1.7	0.8	7.5	190	30	14	6 mm	Rear
SDG10S18F	18000	1.7	0.8	7.5	190	30	14	1/4"	Front
SDG10S18M6F	18000	1.7	0.8	7.5	190	30	14	6 mm	Front
SDG10S18R	18000	1.7	0.8	7.5	190	30	14	1/4"	Rear
SDG10S18M6R	18000	1.7	0.8	7.5	190	30	14	6 mm	Rear
SDG10S25F	25000	1.7	0.8	7.5	190	30	14	1/4"	Front
SDG10S25M6F	25000	1.7	0.8	7.5	190	30	14	6 mm	Front
SDG10S25R	25000	1.7	0.8	7.5	190	30	14	1/4"	Rear
SDG10S25M6R	25000	1.7	0.8	7.5	190	30	14	6 mm	Rear

**General:** Air Inlet Size: 1/4" NPT • Recommended Hose Size: 3/8" (10 mm) • Performance rated @ 90 psig (6.2 bar) air pressure

**Standard Equipment:** Parts List • Safety and Instruction Manual • Collet & Wrenches • Collet Guard (1DS series)

**Accessories:** Grinder Accessories, see page 58



**SAFETY PRECAUTION:** Read and follow all safety and operating instructions.  
**WARNING:** Face & eye protection must be worn while operating power tools, per ANSI B186.1

# STRAIGHT DIE GRINDERS



**SDGS1S18**



**SDGS1S18G**

**Performance:**

Power: 1 hp (0.75 kW)  
 Speed: 12,000 rpm – 25,000 rpm  
 Collet Size: 1/4" & 6 mm

**Features:**

Lockoff Lever  
 Front Exhaust  
 Built-in Speed Control

**Straight Metal Body Die Grinders**



Model Number	Free Speed	Weight		Length		Air Consumption		Collet Size	Exhaust
	rpm	lb	kg	in	mm	scfm	l/s		
<b>1 hp (0.75 kW) – Lever Throttle – Aluminum Housing</b>									
SDGA1S12	12000	1.5	0.7	6.9	175	30	14	1/4"	Front
SDGA1S12M6	12000	1.5	0.7	6.9	175	30	14	6 mm	Front
SDGA1S18	18000	1.5	0.7	6.9	175	30	14	1/4"	Front
SDGA1S18M6	18000	1.5	0.7	6.9	175	30	14	6 mm	Front
SDGA1S25	25000	1.5	0.7	6.9	175	30	14	1/4"	Front
SDGA1S25M6	25000	1.5	0.7	6.9	175	30	14	6 mm	Front
<b>1 hp (0.75 kW) – Lever Throttle – Aluminum Housing with Grip</b>									
SDGA1S12G	12000	1.4	0.6	6.9	175	30	14	1/4"	Front
SDGA1S12M6G	12000	1.4	0.6	6.9	175	30	14	6 mm	Front
SDGA1S18G	18000	1.4	0.6	6.9	175	30	14	1/4"	Front
SDGA1S18M6G	18000	1.4	0.6	6.9	175	30	14	6 mm	Front
SDGA1S25G	25000	1.4	0.6	6.9	175	30	14	1/4"	Front
SDGA1S25M6G	25000	1.4	0.6	6.9	175	30	14	6 mm	Front
<b>1 hp (0.75 kW) – Lever Throttle – Steel Housing</b>									
SDGS1S12	12000	2.2	1.0	6.9	175	30	14	1/4"	Front
SDGS1S12M6	12000	2.2	1.0	6.9	175	30	14	6 mm	Front
SDGS1S18	18000	2.2	1.0	6.9	175	30	14	1/4"	Front
SDGS1S18M6	18000	2.2	1.0	6.9	175	30	14	6 mm	Front
SDGS1S25	25000	2.2	1.0	6.9	175	30	14	1/4"	Front
SDGS1S25M6	25000	2.2	1.0	6.9	175	30	14	6 mm	Front
<b>1 hp (0.75 kW) – Lever Throttle – Steel Housing with Grip</b>									
SDGS1S12G	12000	1.8	0.8	6.9	175	30	14	1/4"	Front
SDGS1S12M6G	12000	1.8	0.8	6.9	175	30	14	6 mm	Front
SDGS1S18G	18000	1.8	0.8	6.9	175	30	14	1/4"	Front
SDGS1S18M6G	18000	1.8	0.8	6.9	175	30	14	6 mm	Front
SDGS1S25G	25000	1.8	0.8	6.9	175	30	14	1/4"	Front
SDGS1S25M6G	25000	1.8	0.8	6.9	175	30	14	6 mm	Front

**General:**

Air Inlet Size: 1/4" NPT • Recommended Hose Size: 3/8" (10 mm) • Performance rated @ 90 psig (6.2 bar) air pressure

**Standard Equipment:**

Parts List • Safety and Instruction Manual • Collet & Wrenches

**Accessories:**

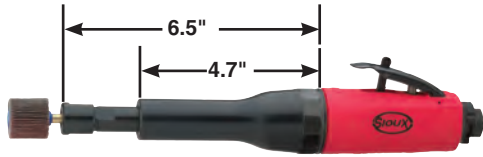
Grinder Accessories, see page 58



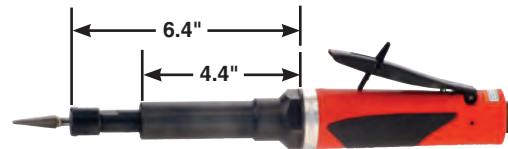
**SAFETY PRECAUTION:** Read and follow all safety and operating instructions.  
**WARNING:** Face & eye protection must be worn while operating power tools, per ANSI B186.1



# EXTENDED DIE GRINDERS



**SXG05S23**



**STXG10S23**

**Performance:**

Power: 0.5 hp (0.37 kW) – 1 hp (0.75 kW)  
 Speed: 12,000 rpm – 23,000 rpm  
 Collet Size: 1/4" (6 mm)

**Features:**

Heavy duty double tapered collet  
 Ergonomic comfort grip  
 Teasing throttle for maximum control  
 Lever throttle with lock-off  
 Ball bearing construction  
 Adjustable speed control

**Extended Die Grinders**



Model Number	Free Speed	Weight		Length		Air Consumption		Collet Size	Exhaust
	rpm	lb	kg	in	mm	scfm	l/s		
<b>0.5 hp (0.37 kW) – Lever Throttle – Extended – 200 Series Collet</b>									
SXG05S18	18000	2.1	0.95	11.0	280	23	10.9	1/4"	Rear
SXG05S18M6	18000	2.1	0.95	11.0	280	23	10.9	6 mm	Rear
SXG05S23	23000	2.1	0.95	11.0	280	23	10.9	1/4"	Rear
SXG05S23M6	23000	2.1	0.95	11.0	280	23	10.9	6 mm	Rear
<b>0.5 hp (0.37 kW) – Lever Throttle – Extended – 300 Series Collet</b>									
SXG05S18S	18000	2.1	0.95	11.0	280	23	10.9	1/4"	Rear
SXG05S18M6S	18000	2.1	0.95	11.0	280	23	10.9	6mm	Rear
SXG05S23S	23000	2.1	0.95	11.0	280	23	10.9	1/4"	Rear
SXG05S23M6S	23000	2.1	0.95	11.0	280	23	10.9	6mm	Rear
<b>1 hp (0.75 kW) – Lever Throttle – Extended – 200 Series Collet</b>									
STXG10S12	12000	2.2	1.0	12.1	308	30	14	1/4"	Rear
STXG10S12M6	12000	2.2	1.0	12.1	308	30	14	6 mm	Rear
STXG10S18	18000	2.2	1.0	12.1	308	30	14	1/4"	Rear
STXG10S18M6	18000	2.2	1.0	12.1	308	30	14	6 mm	Rear
STXG10S23	23000	2.2	1.0	12.1	308	30	14	1/4"	Rear
STXG10S23M6	23000	2.2	1.0	12.1	308	30	14	6 mm	Rear
<b>1 hp (0.75 kW) – Lever Throttle – Extended – Cone Wheel</b>									
STXG10S18CW	18000	2.2	1.0	12.2	310	30	14	3/8"-24 EXT Thread	Rear

**General:**

Air Inlet Size: 1/4" NPT • Recommended Hose Size: 3/8" (10 mm) • Performance rated @ 90 psig (6.2 bar) air pressure

**Standard Equipment:**

Parts List • Safety and Instruction Manual • Collet & Wrenches

**Accessories:**

Grinder Accessories, see page 58



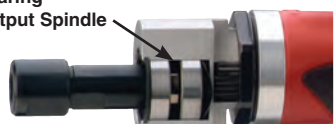
**STXG10S18CW**



**SAFETY PRECAUTION:** Read and follow all safety and operating instructions.  
**WARNING:** Face & eye protection must be worn while operating power tools, per ANSI B186.1

# HIGH TORQUE DIE GRINDERS

Double Ball Bearing Support On Output Spindle



Offset Gear Box For Increased Torque



SDG10SHT08



SDG10SHT12

## High Torque Die Grinders



Model Number	Free Speed	Weight		Length		Air Consumption		Collet Size	Exhaust
	rpm	lb	kg	in	mm	scfm	l/s		
<b>1 hp (0.75 kW) – Lever Throttle – High Torque</b>									
SDG10SHT08	8000	2.0	0.90	9.5	240	35	16.5	1/4"	Rear
SDG10SHT08M6	8000	2.0	0.90	9.5	240	35	16.5	6 mm	Rear
SDG10SHT12	12000	2.0	0.90	9.5	240	35	16.5	1/4"	Rear
SDG10SHT12M6	12000	2.0	0.90	9.5	240	35	16.5	6 mm	Rear

**General:**

Air Inlet Size: 1/4" NPT • Recommended Hose Size: 3/8" (10 mm) • Performance rated @ 90 psig (6.2 bar) air pressure

**Standard Equipment:**

Parts List • Safety and Instruction Manual • Collet & Wrenches

**Accessories:**

Grinder Accessories, see page 58

# STRAIGHT DIE GRINDERS



RT1985

**Performance:**

Power: 1.5 hp (1.1 kW)  
 Speed: 20,000 rpm  
 Collet Size: 1/4" – 1/2" & 6 mm

**Features:**

Twist Throttle  
 Side Exhaust  
 Built-in Speed Control

## Straight Die Grinders



Model Number	Free Speed	Weight		Length		Air Consumption		Collet Size	Exhaust
	rpm	lb	kg	in	mm	scfm	l/s		
<b>1.5 hp (1.1 kW) – Twist Throttle</b>									
RT1985 <sup>1</sup>	20000	4.3	2.0	7.6	193	38	18	1/4"	Side
1985-1/2	20000	4.3	2.0	7.6	193	38	18	1/2"	Side
1985A	20000	4.3	2.0	7.6	193	38	18	3/8"	Side

<sup>1</sup>Not CE Certified

**General:**

Air Inlet Size: 1/4" NPT • Recommended Hose Size: 3/8" (10 mm) • Performance rated @ 90 psig (6.2 bar) air pressure

**Standard Equipment:**

Parts List • Safety and Instruction Manual • Collet & Wrenches • Collet Guard (1DS series)

**Accessories:**

Grinder Accessories, see page 58



**SAFETY PRECAUTION:** Read and follow all safety and operating instructions.  
**WARNING:** Face & eye protection must be worn while operating power tools, per ANSI B186.1



# RIGHT ANGLE DIE GRINDERS

**Performance:**

Power: 0.3 hp (0.22 kW) – 1 hp (0.75 kW)  
 Speed: 3,300 rpm – 23,000 rpm  
 Collet Size: 1/4" & 6 mm

**Features:**

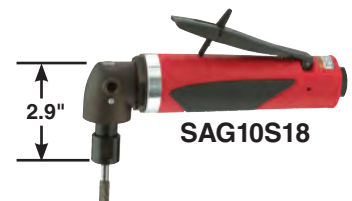
Spiral Bevel Gears  
 Steel Angle Head  
 Built-in Speed Control

**Right Angle Die Grinders**



Model Number	Free Speed	Weight		Length		Air Consumption		Collet Size	Exhaust
	rpm	lb	kg	in	mm	scfm	l/s		
<b>0.3 hp (0.22 kW) – Lever Throttle – 200 Series Collet</b>									
SAG03S12	12000	1.4	0.6	5.6	140	11	5.2	1/4"	Rear
SAG03S12M6	12000	1.4	0.6	5.6	140	11	5.2	6 mm	Rear
SAG03S20	20000	1.4	0.6	5.6	140	11	5.2	1/4"	Rear
SAG03S20M6	20000	1.4	0.6	5.6	140	11	5.2	6 mm	Rear
<b>0.3 hp (0.22 kW) – Lever Throttle – 300 Series Collet</b>									
SAG03S12S	12000	1.35	0.45	5.6	143	11	5.2	1/4"	Rear
SAG03S12M6S	12000	1.35	0.45	5.6	143	11	5.2	6mm	Rear
SAG03S20S	20000	1.35	0.45	5.6	143	11	5.2	1/4"	Rear
SAG03S20M6S	20000	1.35	0.45	5.6	143	11	5.2	6mm	Rear
<b>0.5 hp (0.37 kW) – Lever Throttle – 200 Series Collet</b>									
SAG05S33	3300	2.2	1.0	8.2	208	23	11	1/4"	Rear
SAG05S54	5400	2.2	1.0	8.2	208	23	11	1/4"	Rear
SAG05S12	12000	1.7	0.77	6.9	175	23	11	1/4"	Rear
SAG05S12M6	12000	1.7	0.77	6.9	175	23	11	6 mm	Rear
SAG05S15	15000	1.7	0.77	6.9	175	23	11	1/4"	Rear
SAG05S15M6	15000	1.7	0.77	6.9	175	23	11	6mm	Rear
SAG05S18	18000	1.7	0.77	6.9	175	23	11	1/4"	Rear
SAG05S18M6	18000	1.7	0.77	6.9	175	23	11	6mm	Rear
SAG05S23	23000	1.6	0.64	6.4	160	23	10.8	1/4"	Rear
SAG05S23M6	23000	1.6	0.64	6.4	160	23	10.8	6 mm	Rear
<b>0.5 hp (0.37 kW) – Lever Throttle – 300 Series Collet</b>									
SAG05S12S	12000	1.65	0.77	6.9	175	23	11	1/4"	Rear
SAG05S12M6S	12000	1.65	0.77	6.9	175	23	11	6 mm	Rear
SAG05S15S	15000	1.65	0.77	6.9	175	23	11	1/4"	Rear
SAG05S15M6S	15000	1.65	0.77	6.9	175	23	11	6mm	Rear
SAG05S18S	18000	1.65	0.77	6.9	175	23	11	1/4"	Rear
SAG05S18M6S	18000	1.65	0.77	6.9	175	23	11	6mm	Rear
SAG05S23S	23000	1.55	0.61	6.4	162	23	10.8	1/4"	Rear
SAG05S23M6S	23000	1.55	0.61	6.4	162	23	10.8	6mm	Rear
<b>0.70 hp (0.52 kW) – Lever Throttle – 200 Series Collet</b>									
SAG7S12	12000	2.0	0.90	6.5	165	25	12	1/4"	Front
SAG7S12M6	12000	2.0	0.90	6.5	165	25	12	6mm	Front
SAG7S15	15000	2.0	0.90	6.5	165	25	12	1/4"	Front
SAG7S15M6	15000	2.0	0.90	6.5	165	25	12	6mm	Front
SAG7S18	18000	2.0	0.90	6.5	165	25	12	1/4"	Front
SAG7S18M6	18000	2.0	0.90	6.5	165	25	12	6mm	Front
<b>1 hp (0.75 kW) – Lever Throttle – 200 Series Collet</b>									
SAG10S12	12000	2.7	1.2	7.6	195	30	14	1/4"	Rear
SAG10S12M6	12000	2.7	1.2	7.6	195	30	14	6 mm	Rear
SAG10S15	15000	2.7	1.2	7.6	195	30	14	1/4"	Rear
SAG10S15M6	15000	2.7	1.2	7.6	195	30	14	6 mm	Rear
SAG10S18	18000	2.7	1.2	7.6	195	30	14	1/4"	Rear
SAG10S18M6	18000	2.7	1.2	7.6	195	30	14	6 mm	Rear

**General:** Air Inlet Size: 1/4" NPT • Recommended Hose Size: 3/8" (10 mm) • Performance rated @ 90 psig (6.2 bar) air pressure  
**Standard Equipment:** Parts List • Safety and Instruction Manual • Collet, Support Handle (1 HP only) & Wrenches  
**Accessories:** Grinder Accessories, see page 58



**SAFETY PRECAUTION:** Read and follow all safety and operating instructions.  
**WARNING:** Face & eye protection must be worn while operating power tools, per ANSI B186.1

# RIGHT ANGLE EXTENDED DIE GRINDERS



SAG03X20



SAG7AX20



SAG10AX12



SAGA1AX12



SAGA1AX12G

**Performance:**

Power: 0.7 hp (0.52 kW) – 1 hp (0.75 kW)  
 Speed: 12,000 rpm – 20,000 rpm  
 Collet Size: 1/4" & 6 mm

**Features:**

Steel Angle Head  
 Spiral Bevel Gears  
 200 Series Collet  
 Built-in Speed Control

**Right Angle Extended Die Grinders**



Model Number	Free Speed	Weight		Length		Air Consumption		Collet Size	Exhaust	
	rpm	lb	kg	in	mm	scfm	l/s			
<b>0.3 hp (0.22 kW) – Extended – 300 Series Collet</b>										
SAG03X12	12000	2.1	1.0	9.5	240	11	5.2	1/4"	Rear	
SAG03X20	20000	2.1	1.0	9.5	240	11	5.2	1/4"	Rear	
<b>0.7 hp (0.52 kW) – Aluminum Housing</b>										
SAG7AX13	13000	2.9	1.3	10.0	254	25	12	1/4"	Front	
SAG7AX13M6	13000	2.9	1.3	10.0	254	25	12	6 mm	Front	
SAG7AX16	16000	2.9	1.3	10.0	254	25	12	1/4"	Front	
SAG7AX16M6	16000	2.9	1.3	10.0	254	25	12	6 mm	Front	
SAG7AX20	20000	2.9	1.3	10.0	254	25	12	1/4"	Front	
SAG7AX20M6	20000	2.9	1.3	10.0	254	25	12	6 mm	Front	
<b>1 hp (0.75 kW) – Composite Comfort Housing</b>										
SAG10AX12	12000	3.20	1.45	11.25	286	30	14.2	1/4"	Rear	
SAG10AX12M6	12000	3.20	1.45	11.25	286	30	14.2	6mm	Rear	
SAG10AX15	15000	3.20	1.45	11.25	286	30	14.2	1/4"	Rear	
SAG10AX15M6	15000	3.20	1.45	11.25	286	30	14.2	6mm	Rear	
SAG10AX18	18000	3.20	1.45	11.25	286	30	14.2	1/4"	Rear	
SAG10AX18M6	18000	3.20	1.45	11.25	286	30	14.2	6mm	Rear	
<b>1 hp (0.75 kW) – Aluminum Housing</b>										
SAGA1AX12	12000	3.2	1.5	10.5	267	30	14.2	1/4"	Front	
SAGA1AX12M6	12000	3.2	1.5	10.5	267	30	14.2	6mm	Front	
SAGA1AX18	18000	3.2	1.5	10.5	267	30	14.2	1/4"	Front	
SAGA1AX18M6	18000	3.2	1.5	10.5	267	30	14.2	6mm	Front	
<b>1 hp (0.75 kW) – Aluminum Housing with Grip</b>										
SAGA1AX12G	12000	2.9	1.3	10.5	267	30	14.2	1/4"	Front	
SAGA1AX12M6G	12000	2.9	1.3	10.5	267	30	14.2	6mm	Front	
SAGA1AX18G	18000	2.9	1.3	10.5	267	30	14.2	1/4"	Front	
SAGA1AX18M6G	18000	2.9	1.3	10.5	267	30	14.2	6mm	Front	

**General:** Air Inlet Size: 1/4" NPT • Recommended Hose Size: 3/8" (10 mm) • Performance rated @ 90 psig (6.2 bar) air pressure

**Standard Equipment:** Parts List • Safety and Instruction Manual • Collet • Support Handle • Wrenches

**Accessories:** Grinder Accessories, see page 58



**SAFETY PRECAUTION:** Read and follow all safety and operating instructions.  
**WARNING:** Face & eye protection must be worn while operating power tools, per ANSI B186.1



# RIGHT ANGLE TYPE 27 WHEEL GRINDERS



**Performance:**

Power: 0.5 hp (0.37 kW) – 1 hp (0.75 kW)  
 Speed: 12,000 rpm – 18,000 rpm  
 Wheel Capacity: 3" (75 mm) –  
 6" (150 mm) diameter

**Features:**

Non-Governed  
 Lockoff Lever Throttle  
 Rear Exhaust



**Right Angle Type 27 Wheel Grinders**



Model Number	Free Speed	Wheel Capacity		Weight		Length		Air Consumption		Spindle Thread
	rpm	in	mm	lb	kg	in	mm	scfm	l/s	
<b>0.5 hp (0.37 kW)</b>										
SWG05S183	18000	3.0	75	2.0	0.91	7.0	178	23	11	3/8"-24
<b>0.7 hp (0.52 kW)</b>										
SWG7S183	18000	3.0	75	2.1	0.95	6.4	163	25	12	3/8"-24
<b>1 hp (0.75 kW) – Medium Duty Angle Head</b>										
SWG10A124	12000	4.0	100	2.5	1.1	7.75	195	35	17	3/8" - 24
SWG10A1245	12000	4.5	115	2.6	1.17	7.75	195	35	17	5/8"-11
SWG10A125	12000	5.0	125	2.7	1.22	7.75	195	35	17	5/8" - 11
SWG10S183	18000	3.0	75	2.5	1.1	7.5	190	35	17	3/8"-24
<b>1 hp (0.75 kW) – Heavy Duty Angle Head</b>										
SWG10S124	12000	4.0	100	3.3	1.5	8.3	210	35	17	3/8"-24
SWG10S1245	12000	4.5	115	3.3	1.5	8.3	210	35	17	5/8"-11
SWG10S125	12000	5.0	125	3.4	1.5	8.3	210	35	17	5/8"-11
SWG10S106	10000	6.0	150	3.7	1.7	8.3	210	35	17	5/8"-11

**General:** Air Inlet Size: 1/4" NPT • Recommended Hose Size: 3/8" (10 mm) • Performance rated @ 90 psig (6.2 bar) air pressure

**Standard Equipment:** Parts List • Safety and Instruction Manual • Spindle Wrenches • Wheel Guard • Support Handle • Mounting Flange & Nut

**Accessories:** Grinder Accessories, see page 58



**SAFETY PRECAUTION:** Read and follow all safety and operating instructions.

**WARNING:** Face & eye protection must be worn while operating power tools, per ANSI B186.1



SWG7AX1345



SWG10AX124



SWG10SX1245



SWGS1AX124

**Performance:**

Power: 0.7 hp (0.52 kW) – 1 hp (0.75 kW)  
 Speed: 12,000 rpm – 20,000 rpm  
 Wheel Capacity: 3" (75 mm) – 5" (127 mm)

**Features:**

Non-Governed  
 Lockoff Lever  
 Adjustable Guard



SWGS1AX124G

**Right Angle Type 27 Extended Wheel Grinders**



Model Number	Free Speed	Wheel Capacity		Weight		Length		Air Consumption		Spindle Thread	Exhaust	
	rpm	In	mm	lb	kg	in	mm	scfm	l/s			
<b>0.7 hp (0.52 kW) – Aluminum Housing</b>												
SWG7AX134	13300	4.0	100	3.5	1.6	10.0	254	25	12	3/8" - 24	Front	
SWG7AX1345	13300	4.5	115	3.5	1.6	10.0	254	25	12	5/8" - 11	Front	
SWG7AX203	20000	3.0	75	3.5	1.6	10.0	254	25	12	3/8" - 24	Front	
<b>1 hp (0.75 kW) – Comfort Grip</b>												
SWG10AX124	12000	4.0	100	3.6	1.63	11.25	285	35	17	3/8" - 24	Rear	
SWG10AX1245	12000	4.5	115	3.7	1.68	11.25	285	35	17	5/8" - 11	Rear	
SWG10AX125	12000	5.0	125	3.8	1.72	11.25	285	35	17	5/8" - 11	Rear	
<b>1 hp (0.75 kW) – Heavy Duty Angle Head – Comfort Grip</b>												
SWG10SX124	12000	4.0	100	4.2	1.9	11.7	300	35	17	3/8"-24	Rear	
SWG10SX1245	12000	4.5	115	4.3	2.0	11.7	300	35	17	5/8"-11	Rear	
SWG10SX125	12000	5.0	125	4.3	2.0	11.7	300	35	17	5/8"-11	Rear	
<b>1 hp (0.75 kW) – Aluminum Housing</b>												
SWG1AX124	12000	4.0	100	3.3	1.5	10.5	267	35	17	3/8" - 24	Front	
SWG1AX1245	12000	4.5	115	3.4	1.5	10.5	267	35	17	5/8" - 11	Front	
<b>1 hp (0.75 kW) – Aluminum Housing with Grip</b>												
SWG1AX124G	12000	4.0	100	3.2	1.5	10.5	267	35	17	3/8" - 24	Front	
SWG1AX1245G	12000	4.5	115	3.3	1.5	10.5	267	35	17	5/8" - 11	Front	
<b>1 hp (0.75 kW) – Steel Housing</b>												
SWGS1AX124	12000	4.0	100	3.9	1.8	10.5	267	35	17	3/8" - 24	Front	
SWGS1AX1245	12000	4.5	115	4.0	1.8	10.5	267	35	17	5/8" - 11	Front	
<b>1 hp (0.75 kW) – Steel Housing with Grip</b>												
SWGS1AX124G	12000	4.0	100	3.7	1.7	10.5	267	35	17	3/8" - 24	Front	
SWGS1AX1245G	12000	4.5	115	3.8	1.7	10.5	267	35	17	5/8" - 11	Front	

**General:** 0.7 hp models: Air Inlet Size: 1/4" NPT • Recommended Hose Size: 3/8" (10 mm) • Performance rated @ 90 psig (6.2 bar) air pressure

**1 hp models:** Air Inlet Size: 3/8" NPT • Recommended Hose Size: 3/8" (10 mm) • Performance rated @ 90 psig (6.2 bar) air pressure

**Standard Equipment:** Parts List • Safety and Instruction Manual • Spindle Wrenches • Wheel Guard • Support Handle • Mounting Flange & Nut • Grinding Wheel

**Accessories:** Grinder Accessories, see page 58



**SAFETY PRECAUTION:** Read and follow all safety and operating instructions.  
**WARNING:** Face & eye protection must be worn while operating power tools, per ANSI B186.1

# RIGHT ANGLE TYPE 27 WHEEL GRINDERS



**Performance:**

Power: 1.2 hp (0.9 kW) – 2.2 hp (1.6 kW)  
 Speed: 6,000 rpm – 12,000 rpm  
 Wheel Capacity: 4.5" (115 mm) – 7" (175 mm) diameter

**Features:**

Governed  
 Lockoff Lever Throttle  
 Side Exhaust

**Right Angle Type 27 Wheel Grinders**



Model Number	Free Speed		Wheel Capacity		Weight		Length		Air Consumption Under Load		Air Consumption Free Speed		Spindle Thread
	rpm		in	mm	lb	kg	in	mm	scfm	l/s	scfm	l/s	
<b>1.2 hp (0.9 kW) – Governed Speed</b>													
1285L <sup>1</sup>	6000		7.0	180	6.8	3.1	12.4	315	43	20	22	10	5/8"-11
<b>1.6 hp (1.2 kW) – Governed Speed</b>													
AG16D1245	12000		4.5	115	4.3	1.9	11.0	280	53	25	40	19	5/8"-11
AG16D125	12000		5.0	125	4.4	2.0	11.0	280	53	25	40	19	5/8"-11
AG16D106	10000		6.0	150	4.6	2.1	11.0	280	53	25	40	19	5/8"-11
<b>2.2 hp (1.6 kW) – Governed Speed</b>													
AG22D847	8400		7.0	175	7.1	3.2	12.4	315	60	28	45	21	5/8"-11

<sup>1</sup>Not CE Certified

**General:** Air Inlet Size: 1/4" NPT (1285L); 3/8" NPT (AG) • Recommended Hose Size: 3/8" (10 mm) (1285L); 1/2" (13mm) (AG)

Performance rated @ 90 psig (6.2 bar) air pressure

**Standard Equipment:** Parts List • Safety and Instruction Manual • Spindle Wrenches • Wheel Guard • Support Handle • Mounting Flange & Nut

**Accessories:** Grinder Accessories, see page 58



**SAFETY PRECAUTION:** Read and follow all safety and operating instructions.

**WARNING:** Face & eye protection must be worn while operating power tools, per ANSI B186.1



# VERTICAL WHEEL GRINDERS



1291



VG40D609



VG40D807



VG40C606



VG50D807



VG50D609



VG50C606

**Performance:**

Power: 1.2 hp (0.9 kW) – 5 hp (3.7 kW)  
 Speed: 5,000 rpm – 8,000  
 Diameter: 6" (150 mm) – 9" (230 mm)

**Features:**

Governed & Non-Governed  
 Lockoff Lever & Thumb Throttle  
 Side Exhaust  
 5/8"-11 Spindle Thread  
 2-Stage Throttle (VG Series)

**Vertical Wheel Grinders**



Model Number	Free Speed	Pad Diameter		Weight		Height		Air Consumption Under Load		Air Consumption Free Speed	
	rpm	in	mm	lb	kg	in	mm	scfm	l/s	scfm	l/s
<b>1.2 hp (0.9 kW) – Type 27 – Non-Governed Speed – Thumb Throttle</b>											
1291	5000	7.0	175	5.0	2.3	7.2	183	N/A	N/A	38	18
<b>1.2 hp (0.9 kW) – Type 27 – Non-Governed Speed – Lever Throttle</b>											
1291L	6000	7.0	175	5.0	2.3	7.2	183	N/A	N/A	38	18
<b>4 hp (2.9 kW) – Type 27 – Governed Speed</b>											
VG40D607	6000	7.0	175	9.4	4.3	7.7	195	70	33	40	19
VG40D807	8000	7.0	175	9.4	4.3	7.7	195	70	33	40	19
VG40D609	6000	9.0	230	10.4	4.7	7.7	195	70	33	40	19
<b>5 hp (3.7 kW) – Type 27 – Governed Speed</b>											
VG50D607	6000	7.0	175	11.2	5.1	8.4	215	96	45	55	26
VG50D807	8000	7.0	175	11.2	5.1	8.4	215	96	45	55	26
VG50D609	6000	9.0	230	12.2	5.5	8.4	215	96	45	55	26
<b>4 hp (2.9 kW) – Type 6 &amp; 11 – Governed Speed</b>											
VG40C606	6000	6.0	150	10.5	4.8	8.0	205	70	33	40	19
<b>5 hp (3.7 kW) – Type 6 &amp; 11 – Governed Speed</b>											
VG50C606	6000	6.0	150	12.3	5.6	8.7	220	96	45	55	26

**General:** Air Inlet Size: 1/2" NPT • Recommended Hose Size: 3/8" (10 mm) (1291, 1291L); 3/4" (19 mm) (VG Series) • Performance rated @ 90 psig (6.2 bar) air pressure  
**Standard Equipment:** Parts List • Safety and Instruction Manual • Spindle Wrenches • Wheel Guard • Mounting Flange & Nut • Grinding Wheel (1291, 1291L)  
**Accessories:** Grinder Accessories, see page 58



**SAFETY PRECAUTION:** Read and follow all safety and operating instructions.  
**WARNING:** Face & eye protection must be worn while operating power tools, per ANSI B186.1



# FIBERGLASS TRIM SAW



STS10A124



**Performance:**

Speed: 12,000 rpm  
Wheel Capacity: 4" (100 mm)

**Features:**

1" Cut Depth  
Rotatable Guard  
Vacuum Ready  
Cut Guide

**4" Fiberglass Trim Saw**

Model Number	Wheel Capacity		Free Speed	Weight		Length		Air Consumption		Spindle Thread	Exhaust
	in	mm	rpm	lb	kg	in	mm	scfm	l/s		
STS10A124	4	100	12000	3.25	1.5	9.5	240	35	17	3/8"-24	Rear

**General:** Air Inlet Size: 1/4" NPT • Recommended Hose Size: 3/8" (10 mm) • Performance rated @ 90 psig (6.2 bar) air pressure

**Standard Equipment:** Parts List • Safety and Instruction Manual • 4" Diamond-Coated Blades Sold Separately

**Accessories:** Material Removal Tool Accessories, see page 58

## DIAMOND BLADE

2311



Part Number	Description
2311	4" Continuous-Rim Diamond Blade with 3/8" arbor hole



**SAFETY PRECAUTION:** Read and follow all safety and operating instructions.  
**WARNING:** Face & eye protection must be worn while operating power tools, per ANSI B186.1

# MATERIAL REMOVAL TOOL

**Performance:**

Power: 0.5 hp (0.37 kW)  
Speed: 3,500 rpm

**Features:**

Removable Support Handle  
Lockoff Lever  
Planetary Gear for Increased Torque



SMR05S354



**Material Removal Tool**

Model Number	Free Speed	Weight		Length		Air Consumption		Exhaust
	rpm	lb	kg	in	mm	scfm	l/s	
SMR05S354	3500	2.4	1.08	12.0	304.8	28	132	Rear

**General:** Air Inlet Size: 1/4" NPT • Recommended Hose Size: 3/8" (10 mm) • Performance rated @ 90 psig (6.2 bar) air pressure  
**Standard Equipment:** Parts List • Safety and Instruction Manual • Fine Belt (68813) • Coarse Belt (68814) • Eraser (68815) • Support Handle  
**Accessories:** Panel and Cutoff Saw Accessories, see page 58



Hub Set SPPT280-300



Eraser 68815



Course Wire Belt 68814



Fine Wire Belt 68813



Medium Stainless Steel Wire Belt 68917



Fine Stainless Steel Wire Belt 68915

**BELTS AND ERASERS**

Part Number	Description
SPPT280-300	Hub Set
68815	Rubber Eraser
68814	Course Wire Belt, 23 mm Wide
68910	Course Wire Belt, 11 mm Wide
68911	Medium Wire Belt, 23 mm Wide
68912	Medium Wire Belt, 11 mm Wide
68813	Fine Wire Belt, 23 mm Wide
68913	Fine Wire Belt, 11 mm Wide
68916	Medium Stainless Steel Wire Belt, 23 mm Wide
68917	Medium Stainless Steel Wire Belt, 11 mm Wide
68914	Fine Stainless Steel Wire Belt, 23 mm Wide
68915	Fine Stainless Steel Wire Belt, 11 mm Wide



**SAFETY PRECAUTION:** Read and follow all safety and operating instructions.  
**WARNING:** Face & eye protection must be worn while operating power tools, per ANSI B186.1



# CUTOFF TOOLS (TYPE 1)

**Performance:**

Power: 1 hp (0.75 kW)  
Free Speed: 18,000 rpm – 25,000 rpm

**Features:**

Inline  
Lockoff Lever Start  
Front or Rear Exhaust



SCO10S253F



**Cutoff Tool**

Model Number	Blade Diameter		Depth of Cut		Free Speed rpm	Weight		Length		Air Consumption		Exhaust
	in	mm	in	mm		lb	kg	in	mm	scfm	l/s	
<b>1 hp (0.75 kW) – Cutoff Tool – Inline – Lockoff lever Start</b>												
SCO10S184F	4.0	100	1.1	28	18000	2.0	0.9	8.3	210	30	14	Front
SCO10S184R	4.0	100	1.1	28	18000	2.0	0.9	8.3	210	30	14	Rear
SCO10S204F	4.0	100	1.1	28	20000	2.0	0.9	8.3	210	30	14	Front
SCO10S204R	4.0	100	1.1	28	20000	2.0	0.9	8.3	210	30	14	Rear
SCO10S253F	3.0	76	1.0	25	25000	2.0	0.9	8.3	210	30	14	Front
SCO10S253R	3.0	76	1.0	25	25000	2.0	0.9	8.3	210	30	14	Rear

**General:** Air Inlet Size: 1/4" NPT • Recommended Hose Size: 3/8" (10 mm) • Performance rated @ 90 psig (6.2 bar) air pressure

**Standard Equipment:** Parts List • Safety and Instruction Manual • 1 Blade • Spindle Wrenches & Guard

**Accessories:** Cutoff Saw Accessories, see page 58

# ANGLE CUTOFF TOOLS (TYPE 1)

**Features:**

Heavy duty spiral bevel gearing for durability and smooth operation  
4 position indexable angle head  
360 degree rotatable guard



SCO10A106



**Angle Cutoff Tool**

Model Number	Blade Diameter		Depth of Cut		Free Speed rpm	Weight		Length		Air Consumption		Spindle Thread	Exhaust
	in	mm	in	mm		lb	kg	in	mm	scfm	l/s		
SCO7A184	4.0	100	1.2	30	18000	2.5	1.4	6.4	163	25	12	3/8"-24	Front
SCO10A106	6.0	150	2.0	51	10000	3.7	1.7	8.75	220	35	17	5/8"-11	Rear
SCO10A125	5.0	125	1.5	38	12000	3.5	1.6	8.75	220	35	17	5/8"-11	Rear
SCO10A184	4.0	100	1.2	30	18000	2.5	1.4	7.75	195	35	17	3/8"-24	Rear

**General:** Air Inlet Size: 1/4" NPT • Recommended Hose Size: 3/8" (10 mm) • Performance rated @ 90 psig (6.2 bar) air pressure

**Standard Equipment:** Parts List • Safety and Instruction Manual • 1 Blade • Spindle Wrenches & Guard

**Accessories:** Cutoff Tool Accessories, see page 58



**SAFETY PRECAUTION:** Read and follow all safety and operating instructions.  
**WARNING:** Face & eye protection must be worn while operating power tools, per ANSI B186.1

# EXTENDED CUTOFF TOOLS (TYPE 1)



**SCOA1AX124**



**SCOA1AX124G**

**Performance:**

Power: 1 hp (0.75 kW)  
 Speed: 12,000 rpm  
 Collet Size: 1/4" & 6 mm

**Features:**

Lockoff Lever  
 Robust Steel or Durable Aluminum Housing  
 Available With Comfort Grip

**Angle Extended Cutoff Tool**



Model Number	Blade Diameter		Depth of Cut		Free Speed rpm	Weight		Length		Air Consumption		Spindle Thread	Exhaust
	in	mm	in	mm		lb	kg	in	mm	scfm	l/s		
<b>1 hp (0.75 kW) – Composite Housing</b>													
SCO10AXL124	4.0	100	1.0	25	12000	3.6	1.6	11.25	285	35	17	3/8"-24	Rear
<b>1 hp (0.75 kW) – Aluminum Housing</b>													
SCOA1AX124	4.0	100	1.0	25	12000	3.9	1.8	10.5	267	35	16.5	3/8" - 24	Front
<b>1 hp (0.75 kW) – Aluminum Housing with Grip</b>													
SCOA1AX124G	4.0	100	1.0	25	12000	3.6	1.6	10.5	267	35	16.5	3/8" - 24	Front
<b>1 hp (0.75 kW) – Steel Housing</b>													
SCOS1AX124	4.0	100	1.0	25	12000	4.5	2.0	10.5	267	35	16.5	3/8" - 24	Front
<b>1 hp (0.75 kW) – Steel Housing with Grip</b>													
SCOS1AX124G	4.0	100	1.0	25	12000	4.1	1.9	10.5	267	35	16.5	3/8" - 24	Front

**General:** Air Inlet Size: 1/4" NPT • Recommended Hose Size: 3/8" (10 mm) • Performance rated @ 90 psig (6.2 bar) air pressure

**Standard Equipment:** Parts List • Safety and Instruction Manual • 1 Blade • Spindle Wrenches & Guard

**Accessories:** Cutoff Tool Accessories, see page 58



**SAFETY PRECAUTION:** Read and follow all safety and operating instructions.  
**WARNING:** Face & eye protection must be worn while operating power tools, per ANSI B186.1

**Signature Series Collets**

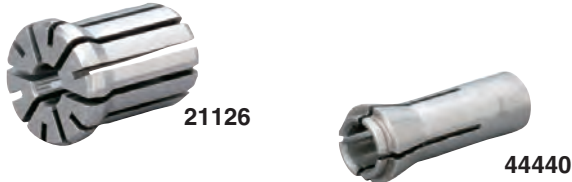


Part Number	Description
74071	Collet Nut
74072	Collet (1/8")
74073	Collet (3/16")
74074	Collet (1/4")
68030	Collet (3/8")
74075	Collet (3 mm)
74076	Collet (6 mm)
68056	Collet (8 mm)
77057	Collet Body SDG Series
74070	Collet Body (1 HP)
74070KIT	Includes 74070, 74071, 74074



Part Number	Description
74128	Collet Nut
74124	Collet (3/32")
74121	Collet (1/8")
74120	Collet (1/4")
74122	Collet (3 mm)
74123	Collet (6 mm)
77505	Collet Body SAS Series
74125	Collet Body SDG Series

**Collets**



Style	Capacity	Part Number	For Use On
Sioux	1/8"	44522	2S1940
	3/16"	44523	
	1/4"	44440	
	3 mm	66037	
	6 mm	66038	
100 Series	1/4"	21126B	1985
	3/8"	21125	
	1/2"	21124	

**Speed-Lok Backing Pads**

• 1/4" Shank  
 • 1/4"-20 Thread

Part Number	Type	Diameter		Max. rpm
		in	mm	
650B	R (plastic)	2	50	30000
587M	S (metal)	2	50	30000
588M	S (metal)	3	75	20000

\*Sanding Disc Not Included

**Belts and Erasers**



Part Number	Description
SPPT280-300	Hub Set
68815	Rubber Eraser
68814	Course Wire Belt, 23 mm Wide
68910	Course Wire Belt, 11 mm Wide
68911	Medium Wire Belt, 23 mm Wide
68912	Medium Wire Belt, 11 mm Wide
68813	Fine Wire Belt, 23 mm Wide
68913	Fine Wire Belt, 11 mm Wide
68916	Medium Stainless Steel Wire Belt, 23 mm Wide
68917	Medium Stainless Steel Wire Belt, 11 mm Wide
68914	Fine Stainless Steel Wire Belt, 23 mm Wide
68915	Fine Stainless Steel Wire Belt, 11 mm Wide

**Diamond Blade**



Part Number	Description
2311	4" Continuous-Rim Diamond Blade with 3/8" arbor hole

**Sioux Swivel**

Allows the air hose to rotate 360° on 2 axes.



Part Number	Description
1338-25	1/4" non-regulated air swivel connector with safety pin
1338-38	3/8" non-regulated air swivel connector with safety pin
1338-50	1/2" non-regulated air swivel connector with safety pin
1338FC-25	1/4" regulated air swivel connector with safety pin



**SAFETY PRECAUTION:** Read and follow all safety and operating instructions.  
**WARNING:** Face & eye protection must be worn while operating power tools, per ANSI B186.1