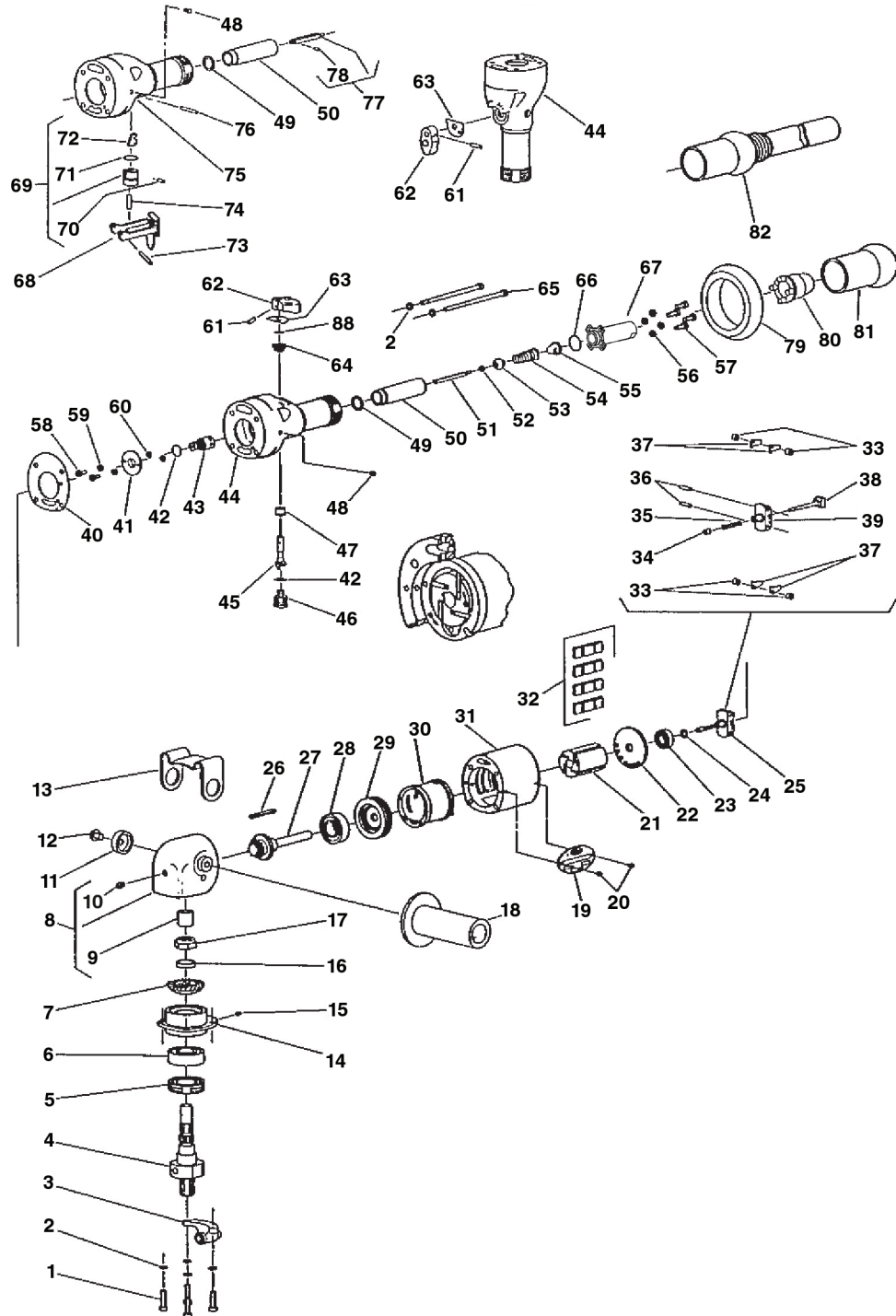




Parts List for No. 1287 Sioux 7-Inch High Speed Air Sander Serial Numbers Starting with "E"



Parts List for No. 1287 Sioux 7-Inch High Speed Air Sander Serial Numbers Starting with "E"

Fig. No.	Part No.	Description	Fig. No.	Part No.	Description
1.	07114	Screw (4)*	41.	44245	Retainer Governor
2.	09724	Washer Lock (8)*	42.	14312	O-Ring (2)*
3.	23189	Lock Tool Spindle Assembly	43.	43664	Governor Valve
4.	79119	Tool Spindle	44.	43228	Thumb Throttle Handle (Includes figures 48, 49 & 69)
5.	23017	Oil Seal	45.	43253	Crank & Pin Assembly
6.	10244	Ball Bearing	46.	44389	Stop
7.	19719	Rotor Spindle & Gear Assembly (Includes figure 27)	47.	44390	Inner Bushing
8.	43227	Gear Case	48.	30375	Grease Fitting
9.	10023	Bearing Needle	49.	14755	Inlet Gasket
10.	30356	Grease Fitting	50.	44391	Valve Sleeve
11.	44421	Clamp Washer	51.	44434	Valve Rod
12.	08650	Screw	52.	35119	Washer
13.	35114	Tool Rest	53.	14372	Valve
14.	11553	Support Bearing	54.	41285	Spring Valve
15.	06404	Set Screw	55.	33993	Air Screen
16.	54439	Spacer	56.	09712	Washer Lock (4)*
17.	09693	Nut Elastic Stop	57.	06573	Screw (4)*
18.	63349	Side Handle	58.	06325	Screw (2)*
19.	20357	Name Plate	59.	09704	Washer Lock
20.	06000	Screw (2)*	60.	14750	Retainer Screw
21.	44220	Rotor	61.	34694	Trigger Pin
22.	10520	End Plate Rear	62.	53440	Trigger
23.	10241	Ball Bearing	63.	35334	Wear Plate
24.	35067	Wave Washer	64.	44378	Outer Bushing
25.	43672	Governor Assembly	65.	07129	Screw (4)*
26.	44219	Rotor Key	66.	14281	O-Ring
27.	19719	Rotor Spindle & Gear Assembly (Includes figure 7)	67.	77330	Inlet Adapter
28.	10243	Ball Bearing	68.	63163	Lever Lock Assembly
29.	10531	End Plate Front	69.	43323	Plunger Guide & Bell Crank Assembly
30.	43022	Cylinder & Pin Assembly	70.	34819	Pin
31.	12276	Housing (Front Exhaust)	71.	14309	O-Ring
	12291	Housing (Rear Exhaust)	72.	35123	Bell Crank
32.	33997	Vane (Set of 4)	73.	30459	Pin
33.	44379	Spacer Governor Weight (4)*	74.	40142	Pin
34.	13183	Nut Governor Adjusting	75.	12298	Lever Throttle Handle
35.	21411	Spring Governor	76.	30219	Roll Pin
36.	30336	Roll Pin (2)*	77.	44476	Valve Rod
37.	35069	Governor Weight (4)	78.	30273	Roll Pin
38.	43666	Support Bearing Spindle Assembly	79.	14275	Rubber Protector
39.	44222	Governor Frame	80.	04207	House Cover (Front Exhaust)
40.	14751	Gasket (Front Exhaust)	81.	14063	Handle Cover (Front Exhaust)
	14756	Gasket (Rear Exhaust)	82.	1361	Handle Cover (Rear Exhaust)
			83.	14291	O-Ring

* Order Quantity As Required
FURNISH CATALOG, SERIAL, AND MODEL NUMBER
WHEN ORDERING PARTS



This pdf incorporates the following model numbers:

1287, 1287L