

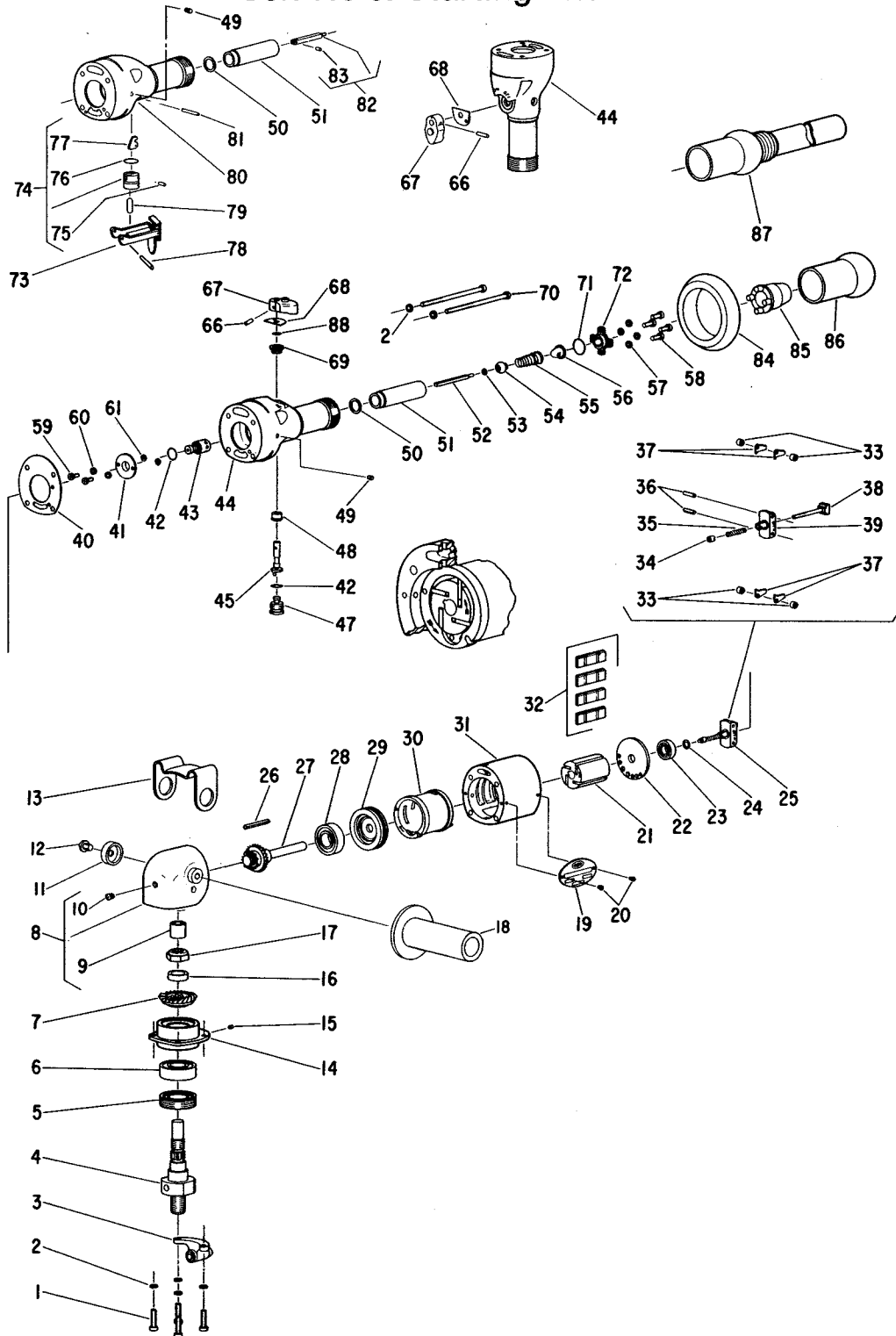


**SIoux**  
**TOOLS INC.**

2901 FLOYD BOULEVARD ■ SIOUX CITY, IOWA 51102 ■

Form A204B  
Dated 12/90

**Parts List for No. 1238**  
**Sioux Air Polisher**  
**Ser. No's. Starting With "E"**



Furnish Catalog, Serial and Model Number When Ordering Parts

**Parts List for No. 1238**  
**Sioux Air Polisher**  
**Ser. No's. Starting With "E"**

Furnish Catalog, Serial and Model Number When Ordering Parts

Fig- ure	Part No.	Name	Fig- ure	Part No.	Name
1	07114	Screw (4)	47	44389	Stop
2	09724	Washer—Lock (8)	48	44390	Bushing—Inner
3	23189	Lock—Tool Spindle	49	30375	Fitting—Grease
4	22945	Spindle—Tool	50	14755	Gasket—Inlet
5	23017	Seal—Oil	51	44391	Sleeve—Valve
6	10244	Bearing—Ball	52	44434	Rod—Valve
7	19725	Assy.—Rotor Spindle & Gear (Incl. Fig. 27)	53	35119	Washer
8	43227	Case—Gear	54	14372	Valve
9	10023	Bearing—Needle	55	41285	Spring—Valve [Thumb Throttle]
10	30356	Fitting—Grease	56	33993	Screen—Air
11	44421	Washer—Clamp	57	09712	Washer—Lock (4)
12	08650	Screw	58	06573	Screw (4)
13	35114	Rest—Tool	59	06325	Screw (2)
14	11553	Support—Bearing	60	09704	Washer—Lock (2)
15	06404	Screw—Set	61	14750	Retainer—Screw (2)
16	54447	Spacer	66	34694	Pin—Trigger
17	09693	Nut—Elastic Stop	67	53440	Trigger
18	63349	Handle—Side	68	35334	Plate—Wear
19	20358	Plate—Name	69	44378	Bushing—Outer
20	06000	Screw (2)	70	07129	Screw (4)
21	44220	Rotor	71	14281	Ring—"O"
22	10520	End Plate—Rear	72	44388	Cap—Inlet
23	10241	Bearing—Ball	73	63163	Ass'y.—Lever Lock
24	35067	Washer—Wave	74	43323	Assy.—Plunger Guide & Bell Crank
25	43670	Assy.—Gov.	75	34819	Pin
26	44219	Key—Rotor	76	14309	Ring—"O"
27	19725	Assy.—Rotor Spindle & Gear (Incl's. Fig. 7)	77	35123	Crank—Bell
28	10243	Bearing—Ball	78	30459	Pin
29	10531	End Plate—Front	79	40142	Pin
30	43022	Assy.—Cylinder & Pin	80	12298	Handle—Lever Throttle
31	12276	Housing (Front Exhaust)	81	30219	Pin—Roll
	12291	Housing (Rear Exhaust)	82	44476	Rod—Valve
32	33997	Vane—Rotor (Set of 4)	83	30273	Pin—Roll
33	44218	Spacer—Gov. Weight (4)	84	14275	Protector—Rubber
34	13183	Nut—Gov. Adjusting	85	04207	Cover—Hose (Front Exhaust)
35	21416	Spring—Gov. (Green)	86	14063	Cover—Handle (Front Exhaust)
36	30336	Pin—Roll (2)	87	1361	Cover—Handle (Rear Exhaust)
37	35069	Weight—Governor (6)	88	14291	Ring—"O" (Used Up To Ser. No's. Starting With "B")
38	43666	Assy.—Brg. Support & Spindle	63169		Ass'y.—Lever Handle Kit (Includes Figs. 49 & 50, 73 thru 83)
39	44222	Frame—Governor			
40	14751	Gasket (Front Exhaust)			
	14756	Gasket (Rear Exhaust)			
41	44245	Retainer—Gov. Valve			
42	14312	Ring—"O" (2)			
43	43664	Valve—Gov.			
44	43228	Handle—Thumb Throttle (Incl's. Fig. 48, 49 & 69)			
45	43253	Assy.—Crank & Pin			



**SIoux**  
**TOOLS INC.**

2901 FLOYD BOULEVARD ■ SIOUX CITY, IOWA 51102 ■