



## INSTRUCTIONS AND PARTS LIST FOR SDR10S7PF POWER UNIT SERIAL "A"

### BE SURE TO LUBRICATE

All Sioux Air Tools are manufactured to extremely close tolerances. Reasonable care and preventative maintenance will greatly prolong their service life.

This line of tools is designed for a long life of continuous duty on assembly lines, with a minimum of service and maintenance. Rotating parts are mounted on extra-capacity ball bearings, rotors and spindles are finished to extreme accuracy for power and low air consumption, gears and pinions are oversize and correctly hardened for quietness and long life.

Special attention has been given to ease of servicing. These tools can be disassembled and reassembled with ease.

Before connecting the tool, blow the air line to remove water and dirt which may have accumulated. This is especially important for a new line or when the line has not been used for some time.

### LUBRICATION

#### GEARS

The gears are lubricated at the factory. Every 100 hours of operation add 1/4 oz. of Sioux Grease No. 289.

#### AIR MOTORS

Sioux Air line lubricators are recommended. When used adjust lubricator to deliver 2 to 4 drops of Sioux Air Motor Oil No. 288 per minute to the air tool. If tool is not used with a lubricator, place 10 to 15 drops of Sioux No. 288 oil into air inlet twice daily.

### OPERATION

The air motor is started by depressing the operating lever or trigger. Motor speed may be controlled by adjusting the slotted head control which is located on the tool housing.

### HOSE AND HOSE CONNECTION

Air supply hose should not be less than 3/8" I.D. If extension hose is necessary, use 1/2" I.D. hose with couplings not less than 3/8" I.D.

### SAFETY PRECAUTIONS

1. Keep Work Area Clean: Cluttered areas and benches invite accidents.
2. Wear Proper Apparel: No loose clothing or jewelry to get caught in moving parts.
3. Use Safety Glasses: Protect your eyes.
4. Secure Work: Use clamps or vise to hold work. It's safer than using your hand and it frees both hands to operate tool.
5. Don't Overreach: Keep proper footing and balance at all times.
6. Maintain Tools With Care: Keep tools sharp and clean for best and safest performance. Follow instructions for lubricating and changing accessories.
7. Disconnect Tools: When not in use, before servicing, or when changing accessories such as blades, bits and etc.
8. Remove Adjusting Key and Wrenches: Form habit of checking to see that keys and adjusting wrenches are removed from tool before turning it on.
9. **Caution:** The use of an accessory with this tool not provided or specified by SIOUX TOOLS INC. may be hazardous.

## WARNING



Some dust created by power sanding, sawing, grinding, drilling, and other construction activities contains chemicals known to cause cancer, birth defects or other reproductive harm.

## ADVERTENCIA



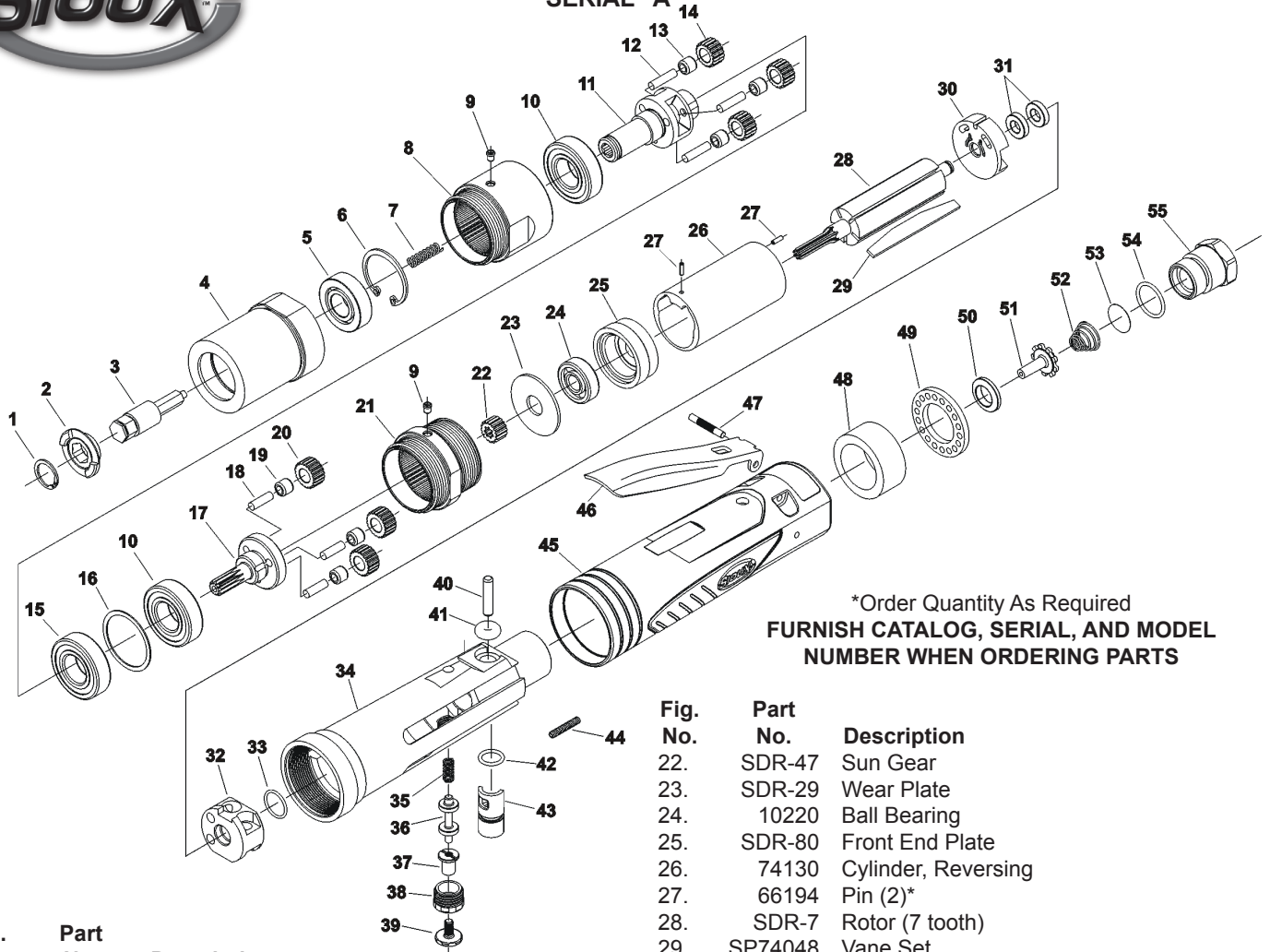
El polvo generado al lijar, aserrar, afilar, taladrar y realizar otras tareas de construcción contiene sustancias químicas que podrían causar cáncer, malformaciones congénitas y otras alteraciones del aparato reproductor.



Snap-on Power Tools, Inc.



# INSTRUCTIONS AND PARTS LIST FOR SDR10S7PF POWER UNIT SERIAL "A"



\*Order Quantity As Required  
FURNISH CATALOG, SERIAL, AND MODEL  
NUMBER WHEN ORDERING PARTS

Fig. No.	Part No.	Description
1.	21501	Retaining Ring
2.	SSD-27	Direct Clutch Jaw
3.	77200	Drive Adapter
4.	SDR-43PF	Gear Case
5.	68310	Ball Bearing
6.	77500	Retaining Ring
7.	21411B	Governor Spring
8.	SDR-42	Double Reduction Gear Case (Includes Figure 2)
9.	30375	Grease Fitting (2)*
10.	10265	Ball Bearing (2)*
11.	SSD-61	Gear Carrier
12.	SDR-24	Pin (3)*(300, 700 & 500 RPM)
13.	10028FC	Needle Bearing (3)*
14.	SDR-45	Planetary Gear (3)*
15.	ME11A33A	Ball Bearing
16.	SDR-27	Spacer
17.	SDR-36	Cantilevered Gear Carrier
18.	30062	Pin (3)*
19.	10040	Needle Bearing (3)*
20.	SDR-46	Planetary Gear (3)*
21.	SDR-41	First Reduction Gear Case (Includes Figure 2)

Fig. No.	Part No.	Description
22.	SDR-47	Sun Gear
23.	SDR-29	Wear Plate
24.	10220	Ball Bearing
25.	SDR-80	Front End Plate
26.	74130	Cylinder, Reversing
27.	66194	Pin (2)*
28.	SDR-7	Rotor (7 tooth)
29.	SP74048	Vane Set
30.	SDR-11	Rear End Plate
31.	SDR-26	Ball Bearing (2)*
32.	SDR-82	Rapid Reverse Insert
33.	69007	O-ring
34.	SDR-81	Straight Reversing Housing
35.	SDR-84	Reversing Spring
36.	SDR-83	Reverse Valve Spool
37.	SDR-88	Top Reverse Button
38.	SDR-85	Top Reverse Nut
39.	SDR-86	Top Reverse Cap
40.	74018	Torr Pin, 3/16 X 7/8
41.	67793	O-ring
42.	14290	O-ring
43.	74013	Regulator
44.	06402	Screw, 6-32 X 3/4 Set Soc Hex
45.	74103	Cover
46.	SDR-5	Lever
47.	74020	Knurl Pin
48.	74016	Muffler
49.	74017	Exhaust Deflector
50.	74008	Throttle Valve Seat
51.	74009	Throttle Valve
52.	74010	Taper Spring
53.	74011	Screen
54.	14281B	O-ring, 1/16 X 5/8 X 3/4
55.	74012	Inlet Bushing



Snap-on Power Tools, Inc.

This pdf incorporates the following model numbers:

SDR10S7PF