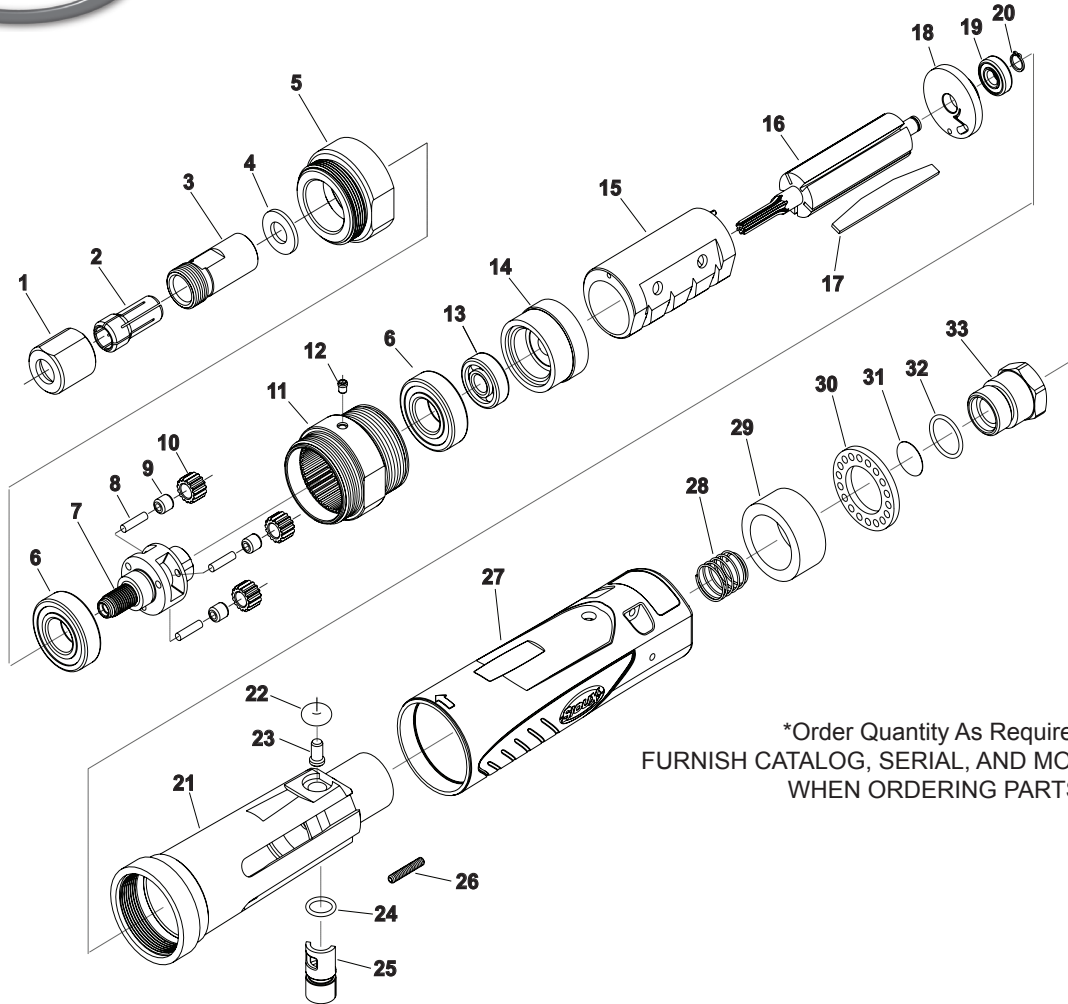




**PARTS LIST FOR
SDR10S26NKT NON-REVERSING SINGLE REDUCTION
SERIAL "A"**

Form Z776
Date 2008 January 24/C
Page 1 of 2



*Order Quantity As Required
FURNISH CATALOG, SERIAL, AND MODEL NUMBER
WHEN ORDERING PARTS

Fig. No.	Part No.	Description
1.	74071	Collet Nut
2.	68030	3/8" Collet
3.	74070	Collet Body
4.	ME5A72	Washer
5.	SDR-43KT	Gear Case Cap
6.	10265	Ball Bearing (2)*
7.	SDR-60	Gear Carrier
8.	SDR-24	Pin (3)*
9.	10028B	Needle Bearing (3)*
10.	SDR-44	Planetary Gear (3)*
11.	SDR-40	Single Reduction Gear Case (Includes Fig. 12)
12.	30375	Grease Fitting
13.	10220	Ball Bearing
14.	SDR-50	Front End Plate
15.	74030	Cylinder, Non-Reversing
16.	SDR-7	Rotor (7 tooth)
17.	SP74048	Vane (Set of 5)

Fig. No.	Part No.	Description
18.	74023	Rear End Plate
19.	10253	Ball Bearing
20.	21491	Retaining Ring
21.	SDG-1	Straight Non-Reversing Housing
22.	67793	"O" Ring
23.	69008	Throttle Pin
24.	14290	"O" Ring
25.	74013	Regulator
26.	06402	Screw, 6-32 X 3/4 Set Soc Hex
27.	66056	Spring
28.	74004	Cover
29.	74016	Muffler
30.	74017	Exhaust Deflector
31.	74011	Screen
32.	14281B	"O" Ring, 1/16 X 5/8 X 3/4
33.	74012	Inlet Bushing

Not Shown:
SPSDR-7SA 7 Tooth Rotor Motor Assembly (Includes Figures 13-20)
74058 Wrench 9/16" x 3/4"
40170 Grease Nozzle

**SIoux
TOOLS INC.**



⚠ WARNING



Some dust created by power sanding, sawing, grinding, drilling, and other construction activities contains chemicals known to cause cancer, birth defects or other reproductive harm.

⚠ ADVERTENCIA



El polvo generado al lijar, aserrar, afilar, taladrar y realizar otras tareas de construcción contiene compuestos químicos que podrían provocar cáncer, malformaciones congénitas y otras alteraciones del aparato reproductor.

**SIoux
TOOLS INC.**

250 SNAP-ON DRIVE ■ PO BOX 1596 ■ MURPHY, NC 28906 ■ USA ■ Phone: 800-722-7290 ■ www.siouxtools.com Printed In U.S.A.

This pdf incorporates the following model numbers:

SDR10S26NKT