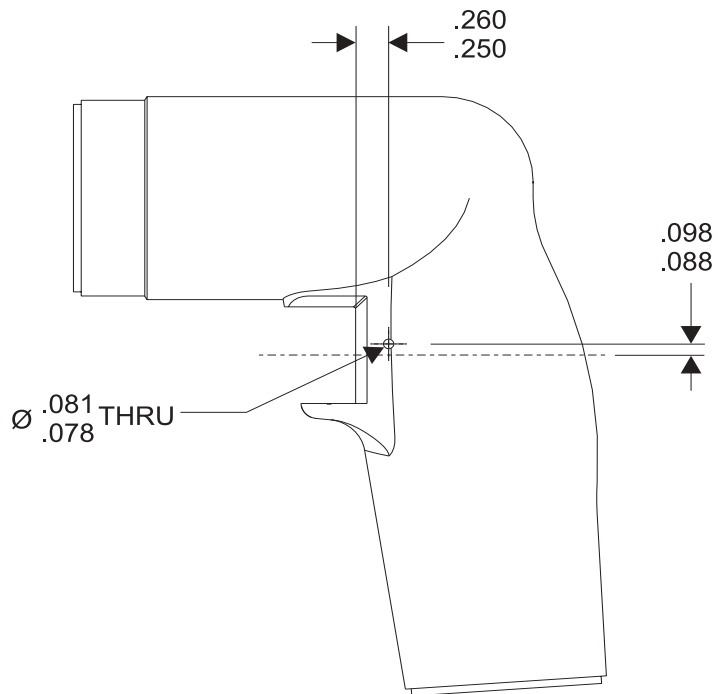




SERVICE INSTRUCTIONS FOR SP68804 TRIGGER PULL FORCE MODIFICATION

1. You will need the following components and tools to perform this modification.
 - A. All the components listed in the parts list, page 2. Service part SP68804 contains one of each component listed in the parts list.
 - B. 7/8" wrench
 - C. A 5/64, #47, or #48 drill (.078 thru .081)
 - D. Brass hammer (or other method of driving in the pin that will not damage the housing)
2. Remove trigger and inlet assembly.
 - A. Remove Inlet Adapter (not shown) and set aside to put back in tool later.
 - B. Pull old Spring out and throw away.
 - C. Remove Tipper Valve (not shown) and set aside to put back in tool later.
 - D. Remove valve seat and throw away.
 - E. Pull old Trigger out and throw away.
3. Drill hole per sketch below.
4. Assemble kit.
 - A. Trigger: Insert Trigger into housing with notch facing the motor.
 - B. Roll Pin: Insert Roll Pin into .078/.081 hole with gap in pin facing toward the motor.
 - C. Valve Seat: Insert new Valve Seat.
 - D. Tipper Valve: Reinstall Tipper Valve into the Valve Seat.
 - E. Spring: Drop the Spring into the inlet and over the Tipper Valve.
 - F. Spring Spacer: Insert the Spring Spacer as shown.
 - G. Inlet Adapter: Reinstall the Inlet Adapter.



**SIoux
TOOLS INC.**

250 SNAP-ON DRIVE ■ PO BOX 1596 ■ MURPHY, NC 28906 ■ USA ■

Printed In U.S.A.



PARTS LIST FOR SP68804

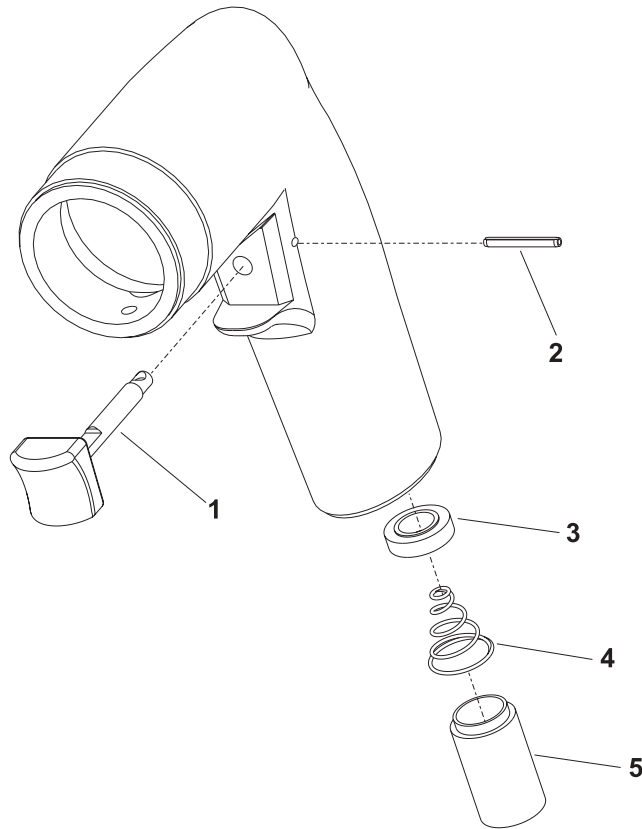


Fig. No.	Part No.	Description
1.	67805	Trigger
2.	30610	Roll Pin 5/64 X 3/4"
3.	IM5100-22A	Valve Seat
4.	68791	Trigger Spring
5.	68792	Trigger Spring Spacer

*Order Quantity As Required

FURNISH CATALOG, SERIAL, AND MODEL NUMBER WHEN ORDERING PARTS

SIoux TOOLS INC.

250 SNAP-ON DRIVE ■ PO BOX 1596 ■ MURPHY, NC 28906 ■ USA ■

Printed In U.S.A.

This pdf incorporates the following model numbers:

SP68804