



**NOTE: Parts are no longer available for this tool.**

**The manual will continue on the next page.**



**PARTS LIST FOR**  
**TORQUE CONTROL SCREWDRIVER CLUTCH (68020)**  
**TORQUE CONTROL QUICK CHANGE CLUTCH (68021)**  
**USED ON "1ST" AND "10T" SERIES TOOLS**

Form Z527  
 Date 8-99/B  
 Page 1 of 1

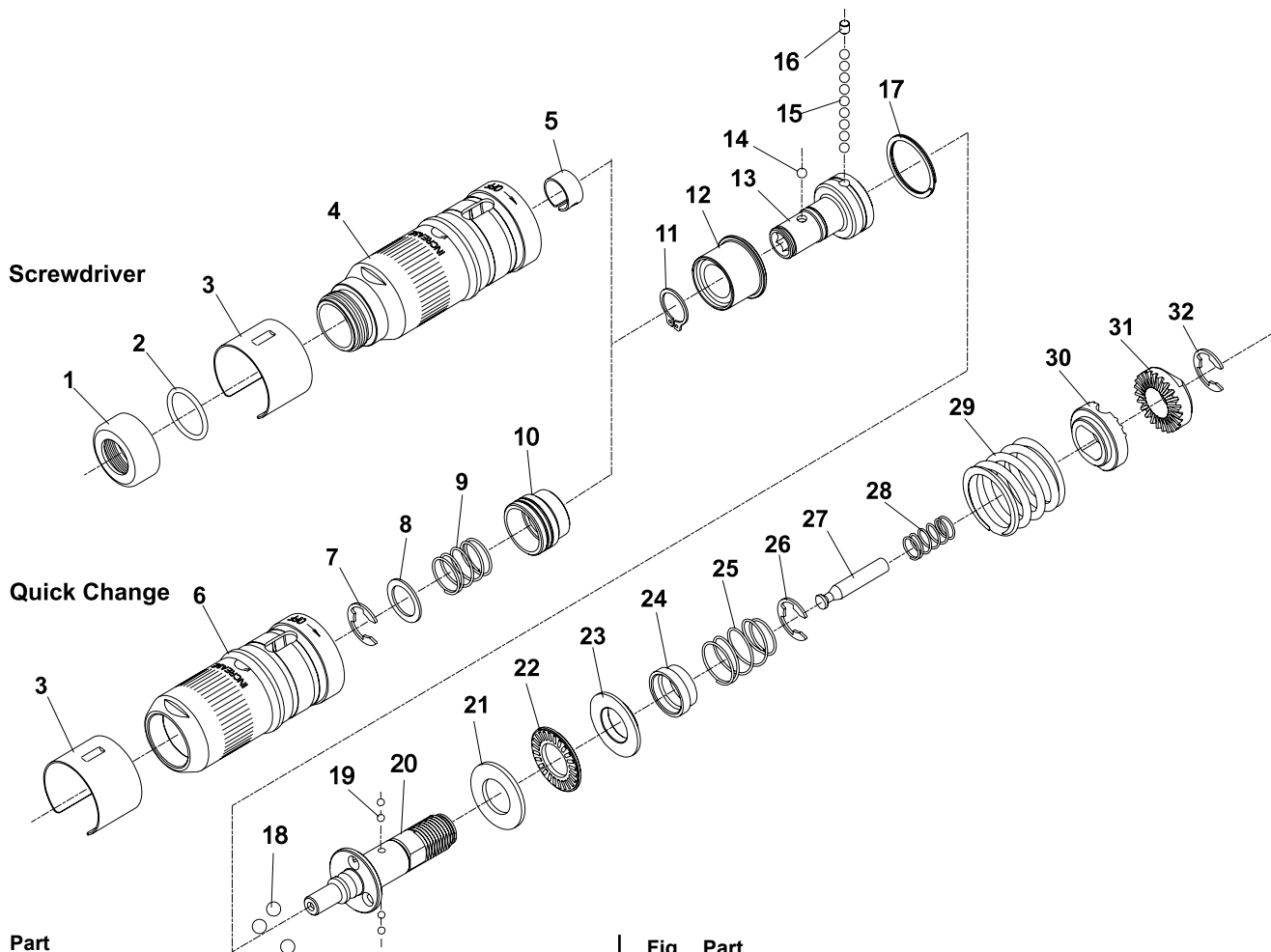


Fig. No.	Part No.	Description
1.	54076	Protector—Thread
2.	14281	Ring—"O"
3.	66058	Cover
4.	67153	Case—Clutch (Screwdriver)
5.	25854	Ring—Ball Retainer
6.	67152	Case—Clutch (Quick Change)
7.	21493	Ring—Retaining
8.	35228	Washer
9.	41204	Spring
10.	66060	Collar
11.	21451	Ring—Retaining
12.	67148	Bushing—Spindle
13.	67147	Spindle—Bit
14.	10902	Ball—5/32" Dia. (Screwdriver - Use large hole in spindle)
	10303	Ball—1/8" Dia. (Quick Change - Use small hole in spindle)
15.	10303	Ball—1/8" Dia. (9)*
16.	66055	Plug
17.	66063	Ring—Retaining
18.	10306	Ball—3/16" Dia. (3)*
19.	10901	Ball—3/32" Dia. (4)*
20.	68001	Spindle—Clutch
21.	68014	Washer—Thrust
22.	66064	Bearing—Thrust

Fig. No.	Part No.	Description
24.	66052	Sleeve—Ball
25.	66056	Spring—Compression
26.	21493	Ring—Retaining
27.	66051	Lock—Slide
28.	66057	Spring—Compression
29.	66048	Spring (Silver)(725, 800, 1000, 1100 RPM) (30-50 in-lb)
	66049	Spring (Blue)(1400, 1500 RPM)(15-35 in-lb)
	66050	Spring (Green)(2600, 2800 RPM)(5-20 in-lb)
30.	66047	Washer—Adjustment
31.	66046	Nut—Adjustment
32.	21493	Ring—Retaining

Items Not Shown:  
 2366 Wrench—Clutch Adjustment

Complete Assemblies:  
 67983 Ass'y—Torque Control Clutch Quick Change  
 (Includes Fig's. 7-32)  
 67984 Ass'y—Torque Control Clutch Screwdriver  
 (Includes Fig's. 5, 11-32)

\*Order Quantity As Required  
**FURNISH CATALOG, SERIAL,  
 AND MODEL NUMBER WHEN  
 ORDERING PARTS**

**SIoux  
 TOOLS INC.**

250 SNAP-ON DRIVE ■ PO BOX 1596 ■ MURPHY, NC 28906 ■ USA ■

Printed In U.S.A.

This pdf incorporates the following model numbers:

68020, 68021