



NOTE: Parts are no longer available for this tool.

The manual will continue on the next page.



**PARTS LIST FOR
ADJUSTABLE CLUTCH SCREWDRIVER (68018)
ADJUSTABLE CLUTCH QUICK CHANGE (68019)
USED ON "1SM" AND "1OM" SERIES TOOLS**

Form Z526
Date 8-99/B
Page 1 of 1

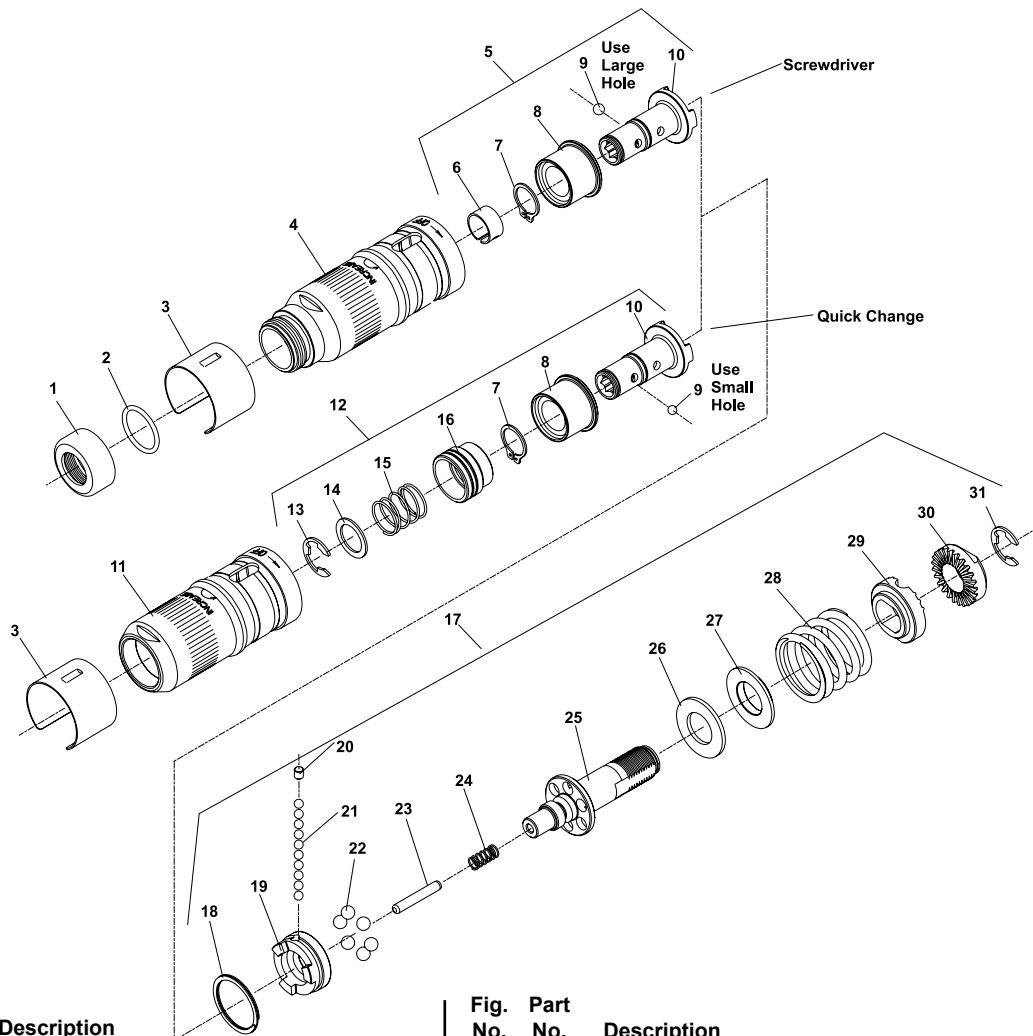


Fig. Part No. No.

Fig. No.	Part No.	Description
1.	54076	Protector—Thread
2.	14281	Ring—"O"
3.	66058	Cover
4.	67153	Case—Clutch (Screwdriver)
5.	67982	Ass'y—Bit Holder (Screwdriver)
6.	25854	Ring—Ball Retainer
7.	21451	Ring—Retaining
8.	67148	Bushing—Spindle
9.	10902	Ball—5/32" Dia. (Screwdriver)
	10303	Ball—1/8" Dia. (Quick Change)
10.	67151	Holder—Bit
11.	67152	Case—Clutch (Quick Change)
12.	67975	Ass'y—Bit Holder (Quick Change)
13.	21493	Ring—Retaining
14.	35228	Washer
15.	41204	Spring
16.	66060	Collar
17.	67985	Ass'y—Adjustable Clutch (Lever Start)
18.	66063	Ring—Retaining

Fig. Part No. No.

Fig. No.	Part No.	Description
19.	67150	Jaw—Clutch
20.	66055	Plug
21.	10303	Ball—1/8" Dia. (10)*
22.	10306	Ball—3/16" Dia. (6)*
23.	30626	Pin—Dowel
24.	67987	Spring—Compression
25.	67149	Spindle—Clutch
26.	68014	Washer—Thrust
27.	66053	Washer—Thrust
28.	66048	Spring (Silver)(725, 950, 1000, 1300 RPM)(30-50 in-lb)
	66049	Spring (Blue)(1400, 1900 RPM)(15-35 in-lb)
	66050	Spring (Green)(2000, 2600, 2700, 3100, 3500 RPM)(2-20 in-lb)
29.	66047	Washer—Adjustment
30.	66046	Nut—Adjustment
31.	21493	Ring—Retaining

Items Not Shown:

2366 Wrench—Clutch Adjustment

*Order Quantity As Required

**SIoux
TOOLS INC.**

250 SNAP-ON DRIVE ■ PO BOX 1596 ■ MURPHY, NC 28906 ■ USA ■

**ISH CATALOG, SERIAL,
MODEL NUMBER WHEN
ORDERING PARTS**

Printed In U.S.A.

This pdf incorporates the following model numbers:

68018, 68019