



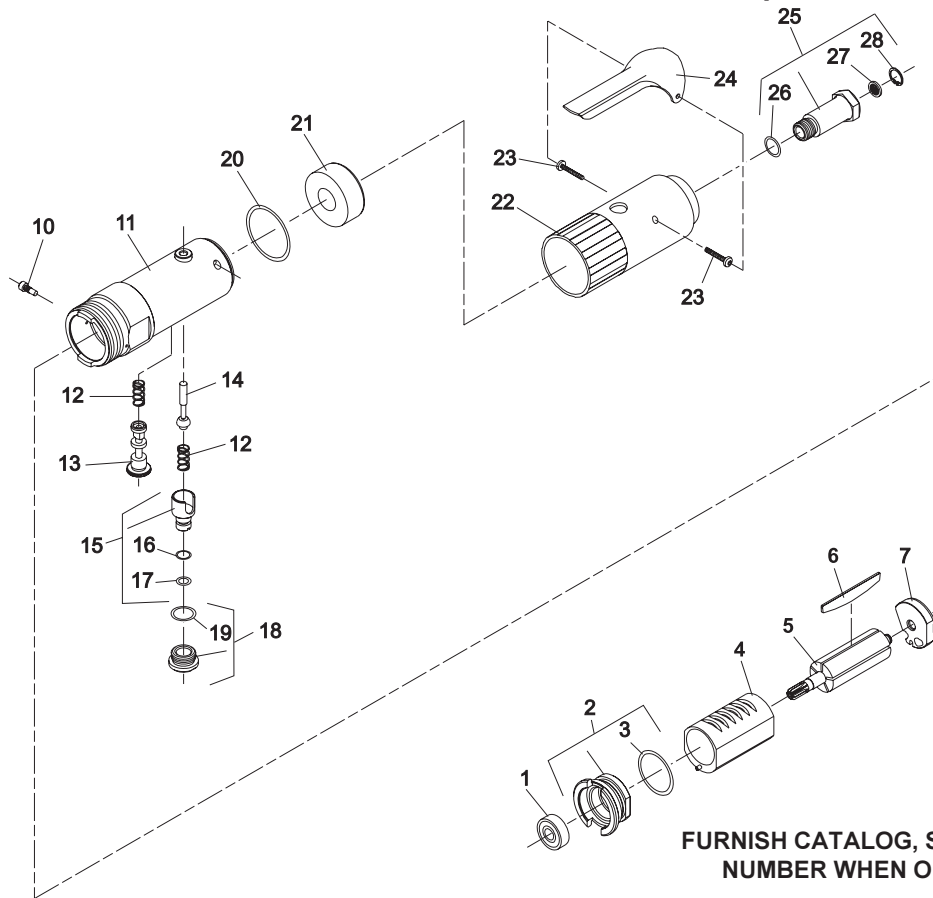
**NOTE: Parts are no longer available for this tool.**

**The manual will continue on the next page.**



**PARTS LIST FOR AIR TAPPER UNITS**  
**2L2100B12 & 2L2100B12BSP (700 RPM)**  
**2L2200B12 & 2L2200B12BSP (1200 RPM)**  
**2L2500B12 & 2L2500B12BSP (400 RPM)**

Form Z478  
 Date 1-98/A  
 Page 1 of 2



**FURNISH CATALOG, SERIAL, AND MODEL NUMBER WHEN ORDERING PARTS**

| Fig. No. | Part No. | Description                    |
|----------|----------|--------------------------------|
| 1.       | 10220    | Bearing—Ball                   |
| 2.       | 13550    | End Plate—Front                |
| 3.       | 14342    | Ring—"O"                       |
| 4.       | 64108    | Cylinder                       |
| 5.       | 54860    | Rotor (6-Tooth)(700, 1200 RPM) |
|          | 54861    | Rotor (8-Tooth)(400 RPM)       |
| 6.       | 63192    | Assembly—Rotor Vane (Set of 5) |
| 7.       | 10552    | End Plate—Rear                 |
| 8.       | 10230    | Bearing—Ball                   |
| 9.       | 21491    | Ring—Retainer                  |
| 10.      | 06254    | Screw—Spool Retaining          |
| 11.      | 64035    | Housing—Lever                  |
| 12.      | 21427    | Spring (2)*                    |
| 13.      | 64038    | Spool—Valve                    |
| 14.      | 63241    | Assembly—Valve                 |
| 15.      | 54843    | Speed—Control                  |
| 16.      | 14394    | Ring—"O"                       |
| 17.      | 14291    | Ring—"O"                       |
| 18.      | 54844    | Retainer—Speed Control         |

| Fig. No. | Part No. | Description                             |
|----------|----------|---|
| 19.      | 14309    | Ring—"O"                                |
| 20.      | 14333    | Ring—"O"                                |
| 21.      | 40116    | Material—Exhaust                        |
| 22.      | 04041    | Cover—Housing                           |
| 23.      | 65499    | Screw—Pan Hd. (Self-Tap)(#6-32x3/4)(2)* |
| 24.      | 35737    | Lever                                   |
| 25.      | 54837    | Adapter—Intake                          |
|          | 67120    | Adapter—Intake (1/4-19 BSPT)            |
| 26.      | 14312    | Ring—"O"                                |
| 27.      | 30463    | Screen                                  |
| 28.      | 21541    | Ring—Retainer                           |

**COMPLETE ASSEMBLY**

|          |   |
|----------|---|
| 63443    | Assembly—Housing (Includes Figs. 10-23 & 25)                      |
| 63443BSP | Assembly—Housing (1/4-19 BSPT) (Includes Figs. 10-23 & 25)        |
| 63375    | Assembly—Motor (6 Tooth)(700, 1200 RPM) (Includes Figs. 1 thru 9) |
| 63376    | Assembly—Motor (8 Tooth)(400 RPM) (Includes Figs. 1 thru 9)       |

\*Order Quantity As Required

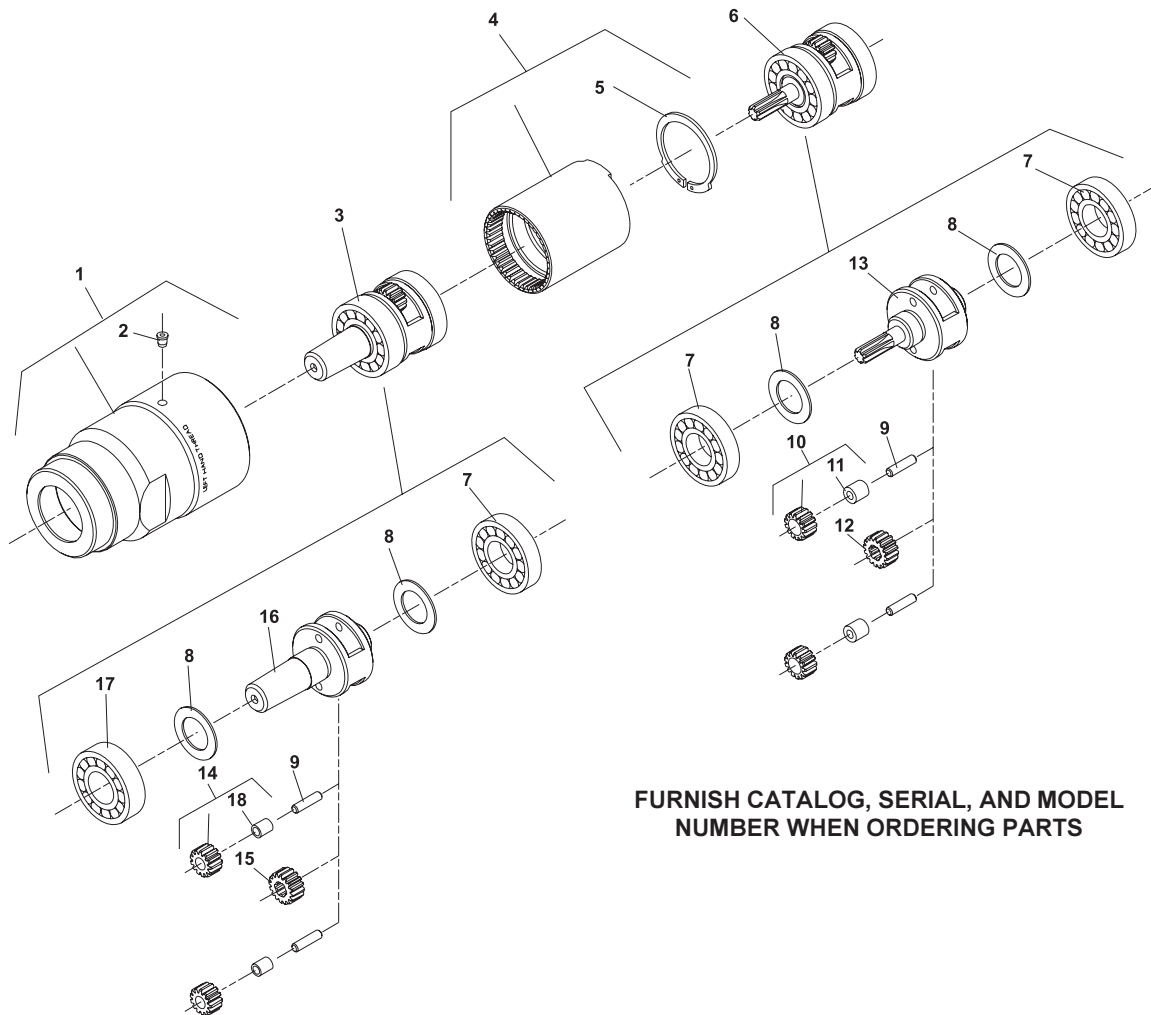
**SIoux TOOLS INC.**

250 SNAP-ON DRIVE ■ PO BOX 1596 ■ MURPHY, NC 28906 ■ USA ■

Printed In U.S.A.



**PARTS LIST FOR AIR TAPPER UNITS**  
**2L2100B12 & 2L2100B12BSP (700 RPM)**  
**2L2200B12 & 2L2200B12BSP (1200 RPM)**  
**2L2500B12 & 2L2500B12BSP (400 RPM)**



**FURNISH CATALOG, SERIAL, AND MODEL NUMBER WHEN ORDERING PARTS**

| <b>Fig. No.</b> | <b>Part No.</b> | <b>Description</b>                           |
|-----------------|-----------------|--|
| 1.              | 64003           | Case—Gear                                    |
| 2.              | 30375           | Fitting—Grease                               |
| 3.              | 65729           | Assembly—Planetary Reduction (400, 700 RPM)  |
|                 | 65731           | Assembly—Planetary Reduction (1200 RPM)      |
| 4.              | 19266           | Gear—Ring                                    |
| 5.              | 21510           | Ring—Retaining                               |
| 6.              | 63386           | Assembly—Planetary Reduction (400 RPM)       |
|                 | 63377           | Assembly—Planetary Reduction (700 RPM)       |
|                 | 63392           | Assembly—Planetary Reduction (1200 RPM)      |
| 7.              | 10203           | Bearing—Ball (3)*                            |
| 8.              | 25439           | Washer (4)*                                  |
| 9.              | 30062           | Pin (4)*                                     |
| 10.             | 19314           | Assembly—Gear & Bearing (2)*(400 RPM)        |
|                 | 19331           | Assembly—Gear & Bearing (2)* (700, 1200 RPM) |

| <b>Fig. No.</b> | <b>Part No.</b> | <b>Description</b>                          |
|-----------------|-----------------|---|
| 11.             | 10040           | Needle—Bearing (2)*                         |
| 12.             | 19267           | Gear—Pinion (700, 1200 RPM)                 |
| 13.             | 64160           | Gear—Carrier (400 RPM)                      |
|                 | 64159           | Gear—Carrier (700 RPM)                      |
|                 | 22702           | Gear—Carrier (1200 RPM)                     |
| 14.             | 19314B          | Assembly—Gear & Bushing (2)* (400, 700 RPM) |
|                 | 19331B          | Assembly—Gear & Bushing (2)*(1200 RPM)      |
| 15.             | 19267           | Gear—Pinion (1200 RPM)                      |
| 16.             | 65728           | Carrier—Gear (400, 700 RPM)                 |
|                 | 65730           | Carrier—Gear (1200 RPM)                     |
| 17.             | 10228           | Bearing—Ball                                |
| 18.             | 10515           | Bushing (2)*(1200 RPM)                      |
|                 | 66886           | Bushing—Oilite (2)*(400, 700 RPM)           |

**SIoux TOOLS INC.**

250 SNAP-ON DRIVE ■ PO BOX 1596 ■ MURPHY, NC 28906 ■ USA ■

\*Order Quantity As Required

Printed In U.S.A.

This pdf incorporates the following model numbers:

2L2100B12, 2L2100B12BSP, 2L2200B12,2L2200B12BSP, 2L2500B12, 2L2500B12BSP