



NOTE: Parts are no longer available for this tool.

The manual will continue on the next page.



INSTRUCTIONS & PARTS LIST FOR SIOUX 8200 POLISHER

GENERAL SAFETY RULES



READ AND UNDERSTAND ALL INSTRUCTIONS. Failure to follow all instructions listed below, may result in electric shock, fire and/or serious personal injury.

SAVE THESE INSTRUCTIONS.

WORK AREA

1. **Keep your work area clean and well lit.** Cluttered benches and dark areas invite accidents.
2. **Do not operate power tools in explosive atmospheres, such as in the presence of flammable liquids, gases, or dust.** Power tools create sparks which may ignite the dust or fumes.
3. **Keep bystanders, children, and visitors away while operating a power tool.** Distractions can cause you to lose control.

ELECTRICAL SAFETY

1. **Double insulated tools are equipped with a polarized plug (one blade is wider than the other). This plug will fit in a polarized outlet only one way. If the plug does not fit fully in the outlet, reverse the plug. If it still does not fit, contact a qualified electrician to install a polarized outlet. Do not change the plug in any way.** Double Insulated eliminates the need for the three wire grounded power cord and grounded power supply system.
2. **Avoid body contact with grounded surfaces such as pipes, radiators, ranges and refrigerators.** There is an increased risk of electric shock if your body is grounded.
3. **Don't expose power tools to rain or wet conditions.** Water entering a power tool will increase the risk of electric shock.
4. **Do not abuse the cord. Never use the cord to carry the tools or pull the plug from an outlet.** Keep cord away from heat, oil, sharp edges or moving parts. Replace damaged cords immediately. Damaged cords increase the risk of electric shock.
5. **When operating a power tool outside, use an outdoor extension cord marked "W-A" or "W".** These cords are rated for outdoor use and reduce the risk of electric shock.

PERSONAL SAFETY

1. **Stay alert, watch what you are doing, and use common sense when operating a power tool. Do not use tool while tired or under the influence of drugs, alcohol, or medication.** A moment of inattention while operating power tools may result in serious personal injury.
2. **Dress properly. Do not wear loose clothing or jewelry. Contain long hair. Keep your hair, clothing, and gloves away from moving parts.** Loose clothes, jewelry, or long hair can be caught in moving parts.
3. **Avoid accidental starting. Be sure switch is OFF before plugging in.** Carrying tools with your finger on the switch or plugging in tools that have the switch ON invites accidents.
4. **Remove adjusting keys or wrenches before turning the tool ON.** A wrench or a key that is left attached to a rotating part of the tool may result in personal injury.
5. **Do not overreach. Keep proper footing and balance at all times.** Proper tooling and balance enable better control of the tool in unexpected situations.
6. **Use safety equipment. Always wear eye protection.** Dust mask, nonskid safety shoes, hard hat, or hearing protection must be used for appropriate conditions.

**SIOUX™
TOOLS INC.**

2801 FLOYD BOULEVARD ■ PO BOX 607 ■ SIOUX CITY, IOWA 51102-0607 USA ■

Printed In U.S.A.

TOOLS USE AND CARE

1. **Use clamps or other practical way to secure and support the workpiece to a stable platform.** Holding the work by hand or against your body is unstable and may lead to loss of control.
2. **Do not force tool. Use the correct tool for your application.** The correct tool will do the job better and safer at the rate for which it is designed.
3. **Do not use tool if switch does not turn it ON or OFF.** A tool that cannot be controlled with the switch is dangerous and must be repaired.
4. **Disconnect the plug from the power source before making any adjustments, changing accessories, or storing the tool.** Such preventive safety measures reduce the risk of starting the tool accidentally.
5. **Store idle tools out of reach of children and other untrained persons.** Tools are dangerous in the hands of untrained users.
6. **Maintain tools with care. Keep cutting tools sharp and clean.** Properly maintained tools with sharp cutting edges are less likely to bind and are easier to control.
7. **Check for misalignment or binding of moving parts, breakage of parts, and any other condition that may affect the tool's operation.** If damaged, have the tool serviced before using. Many accidents are caused by poorly maintained tools.
8. **Use only accessories that are recommended by the manufacturer for your model.** Accessories that may be suitable for one tool may become hazardous when used on another tool.

SERVICE

1. **Tool service must be performed only by qualified repair personnel.** Service or maintenance performed by unqualified personnel may result in a risk of injury.
2. **When servicing a tool, use only identical replacement parts. Follow instructions in the Maintenance Section of this manual.** Use of unauthorized parts or failure to follow Maintenance Instructions may create a risk of electric shock or injury.

SPECIFIC SAFETY RULES FOR POLISHERS.

Accessories must be rated for at least the speed recommended on the tool warning label. Wheels and other accessories running over rated speed can fly apart and cause injury.

Hold tool by insulated gripping surfaces when performing an operation where the cutting tool may contact hidden wiring or its own cord. Contact with a "live" wire will make exposed metal parts of the tool "live" and shock the operator.



Wear safety goggles.


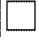


Wear hearing protection.

Do not use this tool as a grinder. This tool is not guarded for use as a grinder and serious injury can result if used as a grinder.

Avoid prolonged exposure to vibration. Prolonged exposure to vibration can cause injury. (*leave out?*)

SYMBOL DEFINITION

| | |
|---|---------------------------------|
| V | volts |
| A | amperes |
| Hz | hertz |
| W | watts |
| kW | kilowatts |
| µF | microfarads |
| l..... | liters |
| kg..... | kilograms |
| N/cm ² | newtons per square centimeter |
| Pa | pascals |
| h..... | hours |
| min..... | minutes |
| s..... | seconds |
|  | alternating current |
| 3  | three-phase alternating current |

- 3_N three-phase alternating current with neutral
-direct current
- n₀no load
-alternating or direct current
- Class II Construction
- splash-proof construction
- watertight construction
- ./min.....revolutions or reciprocation per minute

EXTENSION CORD SELECTION

If an extension cord is used, make sure the conductor size is large enough to prevent excessive voltage drop which will cause loss of power and possible motor damage. A table of recommended extension cord sizes will be found in this section. This table is based on limiting line voltage drop to 5 volts (10 volts for 230 volts) at 150 % of rated amperes.

If an extension cord is to be used outdoors it must be marked with the suffix W-A following the cord type designation. For example-SJTW-A to indicate it is acceptable for outdoor use.

OPERATION

RECOMMENDED EXTENSION CORD SIZES FOR USE WITH PORTABLE ELECTRIC TOOLS

| | | Length of Cord In Feet | | | | | | | | | |
|-------------------|-------|------------------------|-------|--------|--------|--------|--------|--------|--------|--------|---------|
| | | 115V | 25 FT | 50 FT | 100 FT | 150 FT | 200 FT | 250 FT | 300 FT | 400 FT | 500 FT |
| | | 230V | 50 FT | 100 FT | 200 FT | 300 FT | 400 FT | 500 FT | 600 FT | 800 FT | 1000 FT |
| Amp Rating | 0-2 | 18 | 18 | 18 | 16 | 16 | 14 | 14 | 12 | 12 | |
| | 2-3 | 18 | 18 | 16 | 14 | 14 | 12 | 12 | 10 | 10 | |
| | 3-4 | 18 | 18 | 16 | 14 | 12 | 12 | 10 | 10 | 8 | |
| | 4-5 | 18 | 18 | 14 | 12 | 12 | 10 | 10 | 8 | 8 | |
| | 5-6 | 18 | 16 | 14 | 12 | 10 | 10 | 8 | 8 | 6 | |
| | 6-8 | 18 | 16 | 12 | 10 | 10 | 8 | 6 | 6 | 6 | |
| | 8-10 | 18 | 14 | 12 | 10 | 8 | 8 | 6 | 6 | 4 | |
| | 10-12 | 16 | 14 | 10 | 8 | 8 | 6 | 6 | 4 | 4 | |
| | 12-14 | 16 | 12 | 10 | 8 | 6 | 6 | 6 | 4 | 2 | |
| | 14-16 | 16 | 12 | 10 | 8 | 6 | 6 | 4 | 4 | 2 | |
| | 16-18 | 14 | 12 | 8 | 8 | 6 | 4 | 4 | 2 | 2 | |
| | 18-20 | 14 | 12 | 8 | 6 | 6 | 4 | 4 | 2 | 2 | |
| AWG | | | | | | | | | | | |

Spindle Lock.

Unplug the tool and make sure the spindle has come to a COMPLETE stop before engaging the spindle lock.

Lock the spindle by pressing the button on top of the gear case and turning the spindle until the lock engages.



Switch.

The tool is actuated by pressing the top lock button on the handle while squeezing the bottom switch lever at the same time. The bottom switch lever can then be released and the tool will remain running. To shut the tool off, squeeze and release the bottom switch lever.

Speed Control.

The speed control dial is located on the left side of the tool. This dial is used to set the speed of the polisher to match the conditions of the job.

DIAL SETTING VS TOOL SPEED

Dial setting Tool Speed RPM

| | |
|---------|------|
| 1 | 1200 |
| 2 | 1800 |
| 3 | 2100 |
| 4 | 2250 |
| 5 | 2400 |
| 6 | 3000 |

Lubrication

After approx. 1500 hours of operation, return tool to a Sioux service center for lubrication.

Maintenance.

Unplug the tool before performing any of the following maintenance operations.



Brushes.

If excessive arcing occurs, unplug tool and inspect the brushes. If the brushes are worn beyond the white line, they must be replaced. Use only Sioux replacement brushes intended for this tool.

Cleaning.

Remove wool and compound from the tool with by blowing compressed air into the air vents.

Caution! When performing the above operation, direct the tool and air stream away from people.

SPECIFICATIONS.

Input 120V ~, 60Hz, 10.5A
 No load Speed, n₀ 3000-1000 R.P.M.

PARTS LIST FOR SIOUX 8200 POLISHER

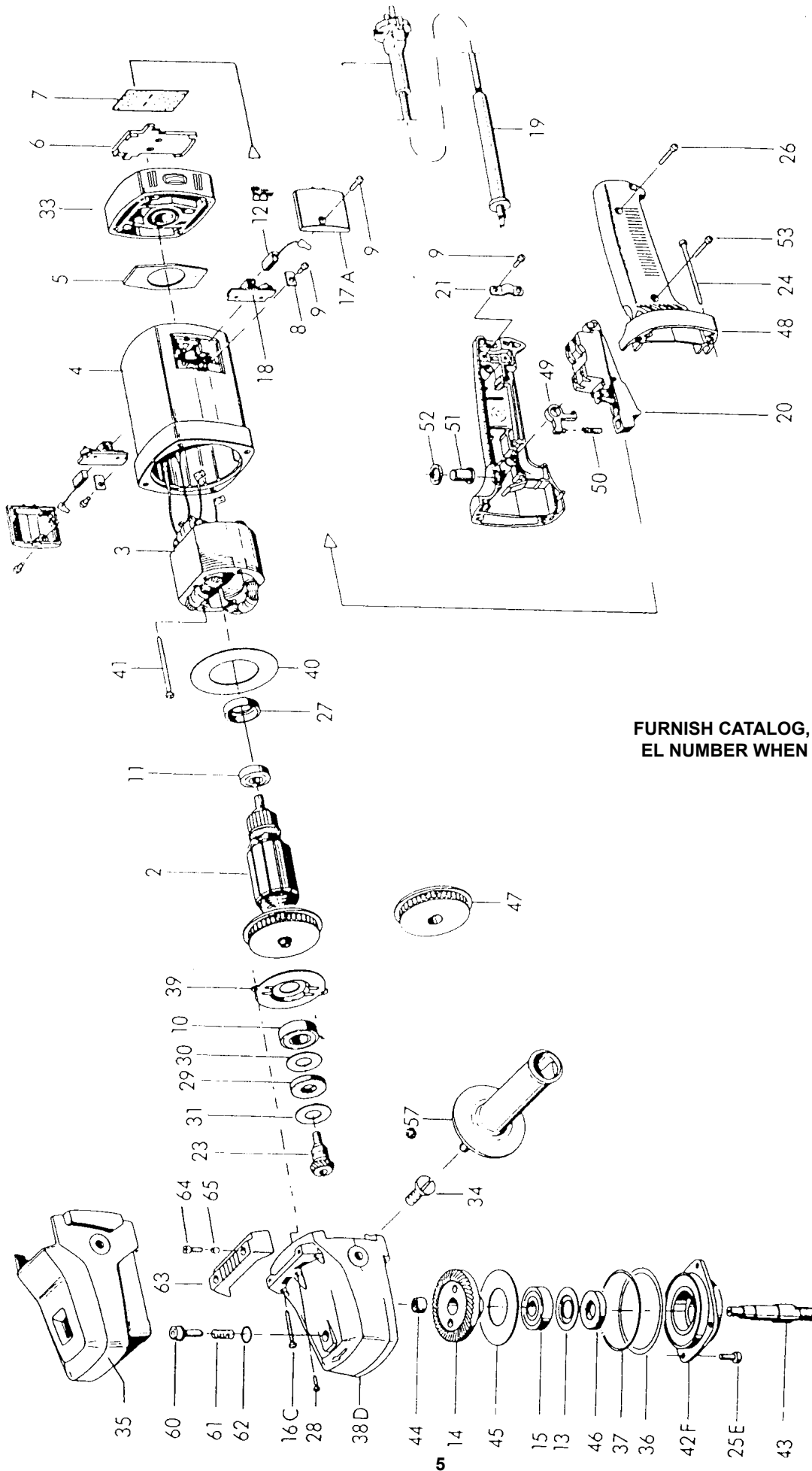
| Fig. No. | Part No. | Description |
|----------|----------|---------------------------|
| 1. | 505297 | Cord |
| 2. | 505298 | Armature |
| 3. | 505299 | Field |
| 4. | 505300 | Housing—Motor |
| 5. | 505301 | Seal |
| 6. | 505302 | Plate—Cover |
| 7. | 505303 | Seal |
| 8. | 505304 | Clip—Retaining (2)* |
| 9. | 505305 | Screw (6)* |
| 10. | 505306 | Bearing—Ball |
| 11. | 505307 | Bearing—Ball |
| 12. | 505308 | Brush (2)* |
| 13. | 505309 | Ring—Sealing |
| 14. | 505310 | Gear—Bevel |
| 15. | 505311 | Bearing—Ball |
| 16. | 505312 | Screw (4)* |
| 17. | 505313 | Cover—Brush (2)* |
| 18. | 505314 | Holder—Brush (2)* |
| 19. | 505315 | Relief—Strain |
| 20. | 505316 | Switch |
| 21. | 505317 | Clamp—Cord |
| 23. | 505318 | Pinion |
| 24. | 505319 | Screw (4)* |
| 25. | 505320 | Screw (4)* |
| 26. | 505321 | Screw (2)* |
| 27. | 505322 | Mount—Bearing |
| 28. | 505323 | Screw (2)* |
| 29. | 505324 | Seal |
| 30. | 505325 | Washer |
| 31. | 505326 | Washer |
| 33. | 505327 | Cover with Control Module |

| Fig. No. | Part No. | Description |
|----------|----------|--------------------|
| 34. | 505328 | Screw (2)* |
| 35. | 505329 | Cover—Gear Housing |
| 36. | 505330 | Plate—Shim |
| 37. | 505331 | Ring—Sealing |
| 38. | 505332 | Housing—Gear |
| 39. | 505333 | Cover—Bearing |
| 40. | 505334 | Baffle |
| 41. | 505335 | Screw (2)* |
| 42. | 505336 | Cover—Bearing |
| 43. | 505337 | Shaft—Spindle |
| 44. | 505338 | Bearing |
| 45. | 505339 | Washer—Spring |
| 46. | 505340 | Seal |
| 47. | 505341 | Fan |
| 48. | 505342 | Handle |
| 49. | 505343 | Lock—Switch |
| 50. | 505344 | Spring |
| 51. | 505345 | Button—Push |
| 52. | 505346 | Washer—Felt |
| 53. | 505347 | Screw |
| 57. | 505348 | Handle—Side |
| 60. | 505349 | Lock—Spindle |
| 61. | 505350 | Spring |
| 62. | 505351 | Seal |
| 63. | 505352 | Rest—Tool |
| 64. | 505353 | Screw (2)* |
| 65. | 505354 | Spacer (2)* |

NOT SHOWN:

| | |
|--------|---------------|
| 505355 | Lubricant |
| 505152 | Nameplate—Top |

*Order Quantity As Required



FURNISH CATALOG, SERIAL, AND MODEL NUMBER WHEN ORDERING PARTS



**SIoux™
TOOLS INC.**

2901 FLOYD BOULEVARD ■ PO BOX 607 ■ SIOUX CITY, IOWA 51102-0607 USA ■

Printed In U.S.A.

This pdf incorporates the following model numbers:

8200