



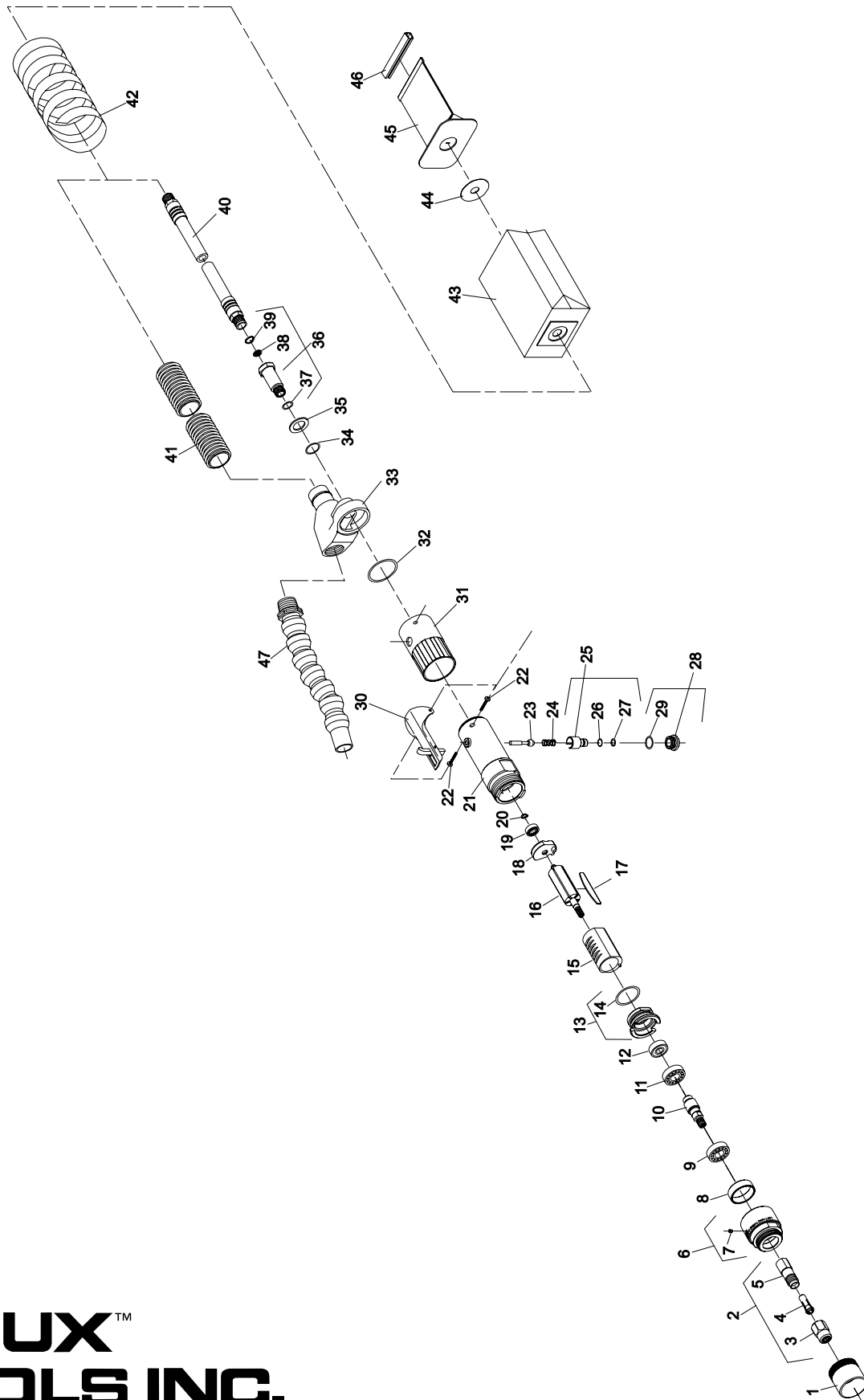
NOTE: Parts are no longer available for this tool.

The manual will continue on the next page.



PARTS LIST FOR 2L1940VV

Form Z437
Date 4-97



**SIoux™
TOOLS INC.**

2901 FLOYD BOULEVARD ■ PO BOX 507 ■ SIOUX CITY, IOWA 51102-0507 ■

Printed In U.S.A.



PARTS LIST FOR 2L1940VV

Fig. No.	Part No.	Description
1.	34952	Shield—1/4" Chuck
2.	43340	Chuck—1/4" Complete Collet
3.	21097	Nut—Collet 11/16" Hex
4.	44440	Collet 1/4"
5.	21096	Body—Collet (3/8-24)
6.	64004	Case—Gear
7.	30375	Fitting—Grease
8.	64044	Spacer
9.	10929	Bearing—Ball
10.	64041	Spindle—Chuck
11.	10239	Bearing—Ball
12.	10220	Bearing—Ball
13.	13550	End Plate—Front
14.	14342	Ring—"O"
15.	64108	Cylinder
16.	54861	Rotor
17.	63192	Ass'y—Rotor Vane (Set of 5)
18.	10554	End Plate—Rear
19.	10230	Bearing—Ball
20.	21491	Ring—Retaining
21.	64036	Housing—Lever
22.	65499	Screw—Pan Head (Self-Tap)(6-32 x 3/4)(2)*
23.	63241	Ass'y—Valve
24.	21427	Spring
25.	54843	Control—Speed
26.	14394	Ring—"O"
27.	14291	Ring—"O"
28.	54844	Retainer—Speed Control
29.	14309	Ring—"O"
30.	63258	Ass'y—Lever
31.	65949	Cover—Housing

Fig. No.	Part No.	Description
32.	14313	Ring—"O"
33.	65433	Extractor
34.	14281	Ring—"O"
35.	25206	Washer
36.	54837	Adapter—Intake
37.	14312	Ring—"O"
38.	30463	Screen
39.	21541	Ring—Retaining
40.	1376	Ass'y—Leader Hose 6'
41.	853	Hose—Dust Collection
42.	65844	Wrap—Spiral
43.	911A	Ass'y—Disposable Dust Bag [Includes Figs. 43, 44, 46, & (1 only) 45]
	65768	Bag—Outer
44.	65770	Washer—Retainer
45.	912	Bag—Filter (5 Pack)
46.	65771	Clip—Bag Closer
47.	65947	Hose—Vacuum

COMPLETE ASSEMBLIES
 63452 Ass'y—Motor
 67529 Ass'y—Housing

*Order Quantity As Required

FURNISH CATALOG, SERIAL, AND MODEL NUMBER
WHEN ORDERING PARTS

SIoux™ TOOLS INC.

2901 FLOYD BOULEVARD ■ PO BOX 507 ■ SIOUX CITY, IOWA 51102-0507 ■

Printed In U.S.A.

This pdf incorporates the following model numbers:

2L1940VV