



NOTE: Parts are no longer available for this tool.

The manual will continue on the next page.



INSTRUCTIONS & PARTS LIST FOR 1449HPBR, 1449HPR, 1455HPR, & 1455HPBR (Serial A)

AIR SUPPLY

The efficiency and life of this tool depend on the proper supply of clean, dry, lubricated air at about 90 lbs. P.S.I., although higher or lower pressures may be used. The use of an air line filter, pressure regulator and lubricator is recommended.

Before connecting the tool, blow the air line to remove water and dirt which may have accumulated. This is especially important for a new line or when the line has not been used for some time.

HOSE AND HOSE CONNECTION

The air supply hose is 3/8" I.D. If extension hose is necessary, use 1/2" hose, with couplings not less than 3/8" I.D.

LUBRICATION

An oil supply to the air motor is important. SIOUX air line lubricators are recommended. Adjust to deliver 2 drops of SIOUX Air Motor Oil No. 288 per minute. When air line lubricator is not used, place 10-15 drops of SIOUX No. 288 oil into the air inlet twice daily.

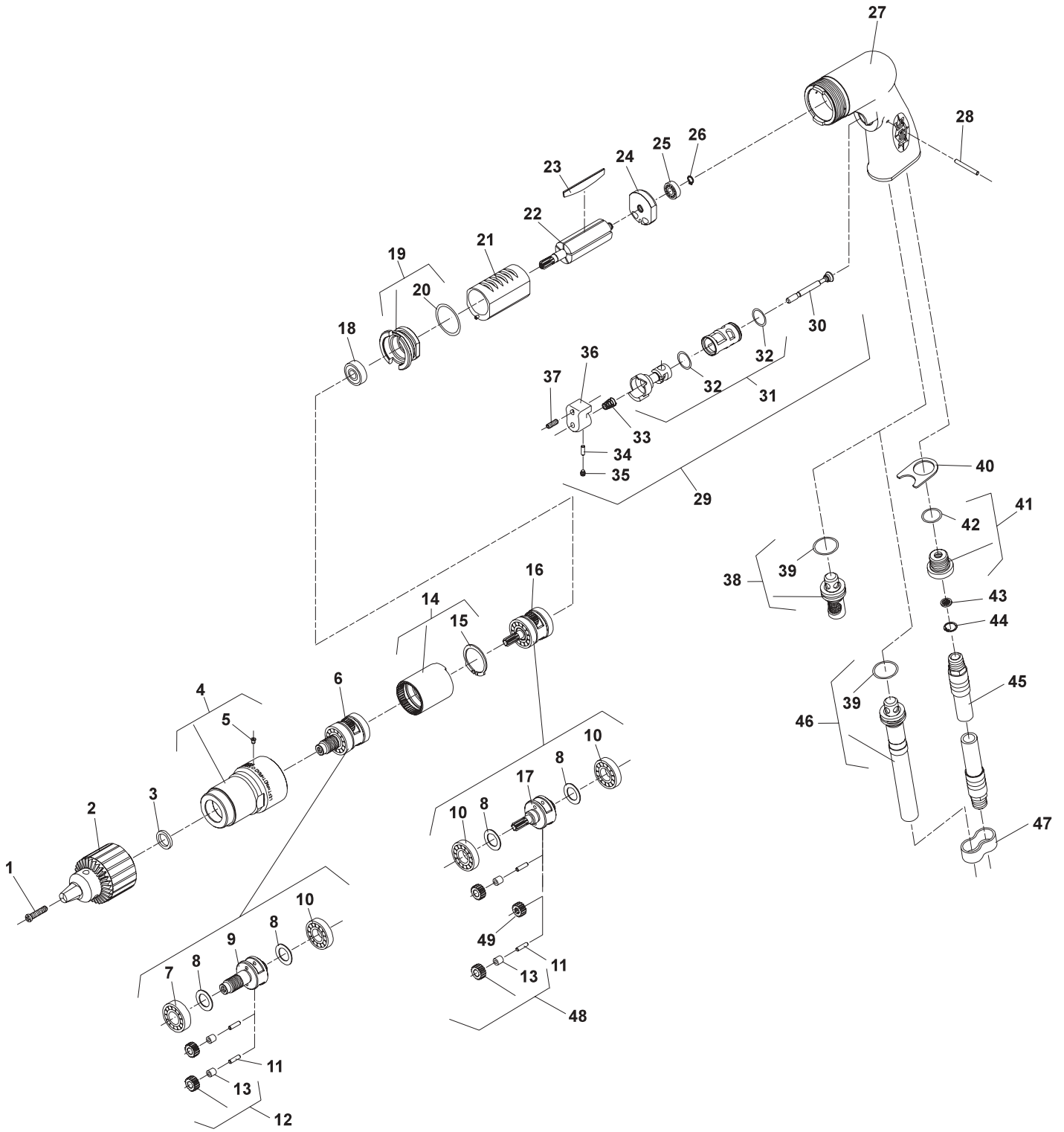
The gearing is lubricated with SIOUX No. 289A grease and should be greased every 50 hours of operation.

OPERATION

This tool is equipped with a teasing throttle. By slightly depressing the trigger the chuck will rotate slowly. This is useful for starting a drill bit without first spotting with a punch. By fully depressing the trigger the chuck will rotate at its top speed.

If the gear case is removed or loosened, retighten to 35 ft. lb.

SIOUX™
TOOLS INC.



INSTRUCTIONS & PARTS LIST FOR 1449HPBR, 1449HPR, 1455HPR, & 1455HPBR (Serial A)

Fig- ure	Part No.	Name	Fig- ure	Part No.	Name	
1.	57250R	Screw—M5 x .8 x 20 LH Fil Phil Mach	20.	14342	Ring—"O"	
2.	21137	Chuck (1/2" Cap, 1/2-20 Th'd) (1449HPBR, 1455HPBR)	21.	64108	Cylinder	
	21131	Chuck (3/8" Cap, 1/2-20 Th'd)(1449HPR)	22.	54861	Rotor—8 Tooth (1449HPR, 1449HPBR)	
	21133	Chuck (3/8" Cap, 3/8-24 Th'd)(1455HPR)		54860	Rotor—6 Tooth (1455HPR, 1455HPBR)	
	30011	Key—Chuck (1/2" Chuck) (1449HPBR, 1455HPBR)	23.	63192	Ass'y—Rotor Vane (Set of 5)	
	30002	Key—Chuck (3/8" Chuck) (1449HPR, 1455HPBR)	24.	10552	End Plate—Rear	
3.	35798	Washer (1449HPR, 1449HPBR, 1455HPBR)	25.	10230	Bearing—Ball	
4.	64003	Case—Gear	26.	21491	Ring—Retainer	
5.	30375	Fitting—Grease	27.	12660	Housing	
6.	63436	Ass'y—Planetary Reduction (1/2-20 Th'd) (1449HPR, 1449HPBR, 1455HPBR)	28.	40157	Pin—Dowel (1/8" X 1 1/8")	
	63379	Ass'y—Planetary Reduction (3/8-24 Th'd)(1455HPR)	29.	65217	Ass'y—Trigger	
7.	10228	Bearing—Ball	30.	54222	Valve	
8.	25439	Washer (4)*	31.	65227	Valve Sleeve & Body	
9.	22704	Carrier—Gear (1/2-20 Th'd) (1449HPR, 1449HPBR, 1455HPBR)	32.	14378	Ring—"O" (2)*	
	64163	Carrier—Gear (3/8-24 Th'd)(1455HPR)	33.	21401	Spring	
10.	10203	Bearing—Ball (3)*	34.	40155	Pin—Dowel	
11.	30062	Pin (4)*	35.	06458	Screw—Set (#8-32 X 3/16")	
12.	19314	Ass'y—Gear & Bearing (2)*	36.	12676	Trigger	
13.	10040	Bearing—Needle (4)*	37.	06459	Screw—Set (#8-32 X 1/2")	
14.	19266	Gear—Ring	38.	63545	Ass'y—Silencer	
15.	21510	Ring—Retainer	39.	14366	Ring—"O"	
16.	63386	Ass'y—Planetary Reduction (1449HPR, 1449HPBR)	40.	54968	Retainer—Exhaust	
	63377	Ass'y—Planetary Reduction (1455HPR, 1455HPBR)	41.	54955	Adaptor—Inlet	
17.	64160	Carrier—Gear (1449HPR, 1449HPBR)	42.	14281	Ring—"O"	
	64159	Carrier—Gear (1455HPR, 1455HPBR)	43.	30463	Screen	
18.	10220	Bearing—Ball	44.	21541	Ring—Retainer	
19.	13550	End Plate—Front	45.	1376	Ass'y—Leader Hose	
			46.	63546	Ass'y—Exhaust Tube	Remote Exhaust
			47.	40153	Clip—Hose (3)	
			48.	19314	Ass'y—Gear & Bearing (2)* (1449HPR, 1449HPBR)	
				19331	Ass'y—Gear & Bearing (2)* (1455HPR, 1455HPBR)	
			49.	19267	Gear—Pinion (1455HPR, 1455HPBR)	
			NOT SHOWN:			
			2355	Ass'y—Side Handle (Optional)		

*Order Quantity As Needed

Furnish Catalog, Serial and Model Number When Ordering
Parts



GENERAL SAFETY PRECAUTIONS FOR AIR TOOLS

1. **KEEP WORK AREA CLEAN:** Cluttered areas and benches invite accidents.
2. **AVOID DANGEROUS ENVIRONMENT:** Keep work area well lit.
3. **KEEP CHILDREN AWAY:** All visitors should be kept safe distance form work area.
4. **STORE IDLE TOOLS:** When not in use, tools should be stored in dry, high or locked-up place—out of reach of children.
5. **DON'T FORCE TOOL:** It will work best and safest at the designed rate.
6. **USE RIGHT TOOL:** Don't force small tool to do the job of a heavy-duty tool.
7. **WEAR PROPER APPAREL:** No loose clothing or jewelry to get caught in moving parts.
8. **USE SAFETY GLASSES:** Use safety glasses with most tools. Also face or dust mask if it is a cutting operation.
9. **SECURE WORK:** Use clamps or vise to hold work. It's safer than using your hand and it allows freedom of both hands to hold tool.
10. **DON'T OVERREACH:** Keep proper footing and balance at all times.
11. **MAINTAIN TOOLS WITH CARE:** Keep tools sharp and clean for best and safest performance. Follow instructions for lubricating and changing accessories.
12. **DISCONNECT TOOLS:** When not in use; before servicing; when changing accessories such as blades, bits, cutter, etc.
13. **REMOVE ADJUSTING KEYS AND WRENCHES:** Form habit of checking to see that keys and adjusting wrenches are removed form tool before turning it on.
14. **CAUTION:** The use of an accessory with this tool not provided or specified by SIOUX TOOLS may be hazardous.

SIoux™
TOOLS INC.

2901 FLOYD BOULEVARD ■ PO BOX 507 ■ SIOUX CITY, IOWA 51102-0507 ■

Printed In U.S.A.

This pdf incorporates the following model numbers:

1449HPBR, 1449HPR, 1455HPR,1455HPBR