



NOTE: Parts are no longer available for this tool.

The manual will continue on the next page.



PARTS LIST FOR TORQUE CONTROL CLUTCH 66065 QUICK CHANGE & 66066 SCREWDRIVER

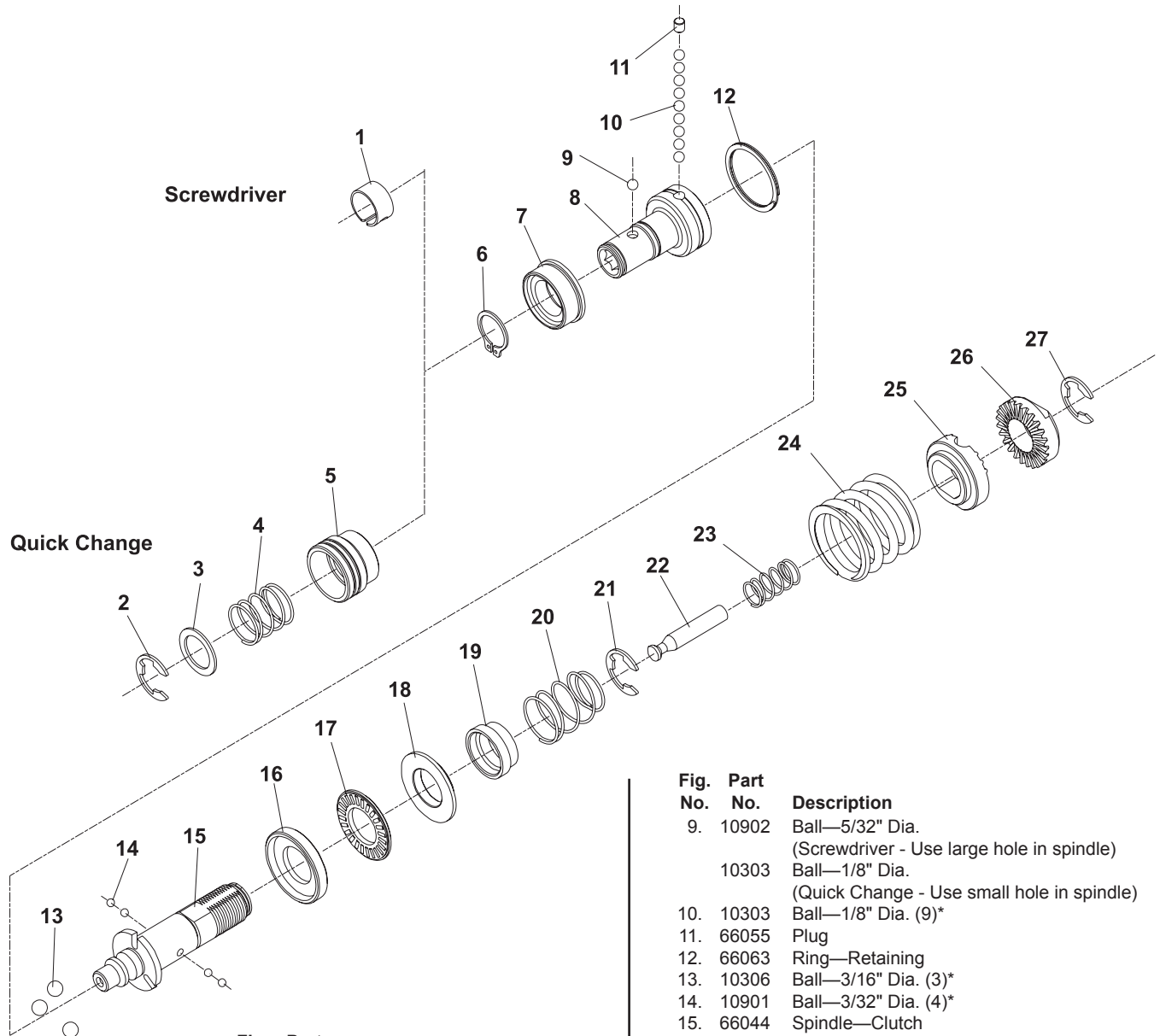


Fig. No.	Part No.	Description
1.	25854	Ring—Ball Retainer
2.	21493	Ring—Retaining
3.	35228	Washer
4.	41204	Spring
5.	66060	Collar
6.	21451	Ring—Retaining
7.	66059	Bushing—Spindle
8.	66045	Spindle—Bit

Fig. No.	Part No.	Description
9.	10902	Ball—5/32" Dia. (Screwdriver - Use large hole in spindle)
	10303	Ball—1/8" Dia. (Quick Change - Use small hole in spindle)
10.	10303	Ball—1/8" Dia. (9)*
11.	66055	Plug
12.	66063	Ring—Retaining
13.	10306	Ball—3/16" Dia. (3)*
14.	10901	Ball—3/32" Dia. (4)*
15.	66044	Spindle—Clutch
16.	66054	Race—Thrust
17.	66064	Bearing—Thrust
18.	66053	Washer—Thrust
19.	66052	Sleeve—Ball
20.	66056	Spring—Compression
21.	21493	Ring—Retaining
22.	66051	Lock—Slide
23.	66057	Spring—Compression
24.	66048	Spring (Silver)(800, 1100 RPM)(30-50 in-lb)
	66049	Spring (Blue)(1500 RPM)(15-35 in-lb)
	66050	Spring (Green)(2800 RPM)(5-20 in-lb)
25.	66047	Washer—Adjustment
26.	66046	Nut—Adjustment
27.	21493	Ring—Retaining

*Order Quantity As Needed

SIoux TOOLS INC.

250 SNAP-ON DRIVE ■ PO BOX 1596 ■ MURPHY, NC 28906 ■ USA ■

Printed In U.S.A.

This pdf incorporates the following model numbers:

66065, 66066