



NOTE: Parts are no longer available for this tool.

The manual will continue on the next page.



PARTS LIST FOR

1963VV, 1965V, & 1965VV

1965V-5/8, 1965VV-5/8

SERIAL "E"

Form Z283B
Date 1-99/A
Page 1 of 4

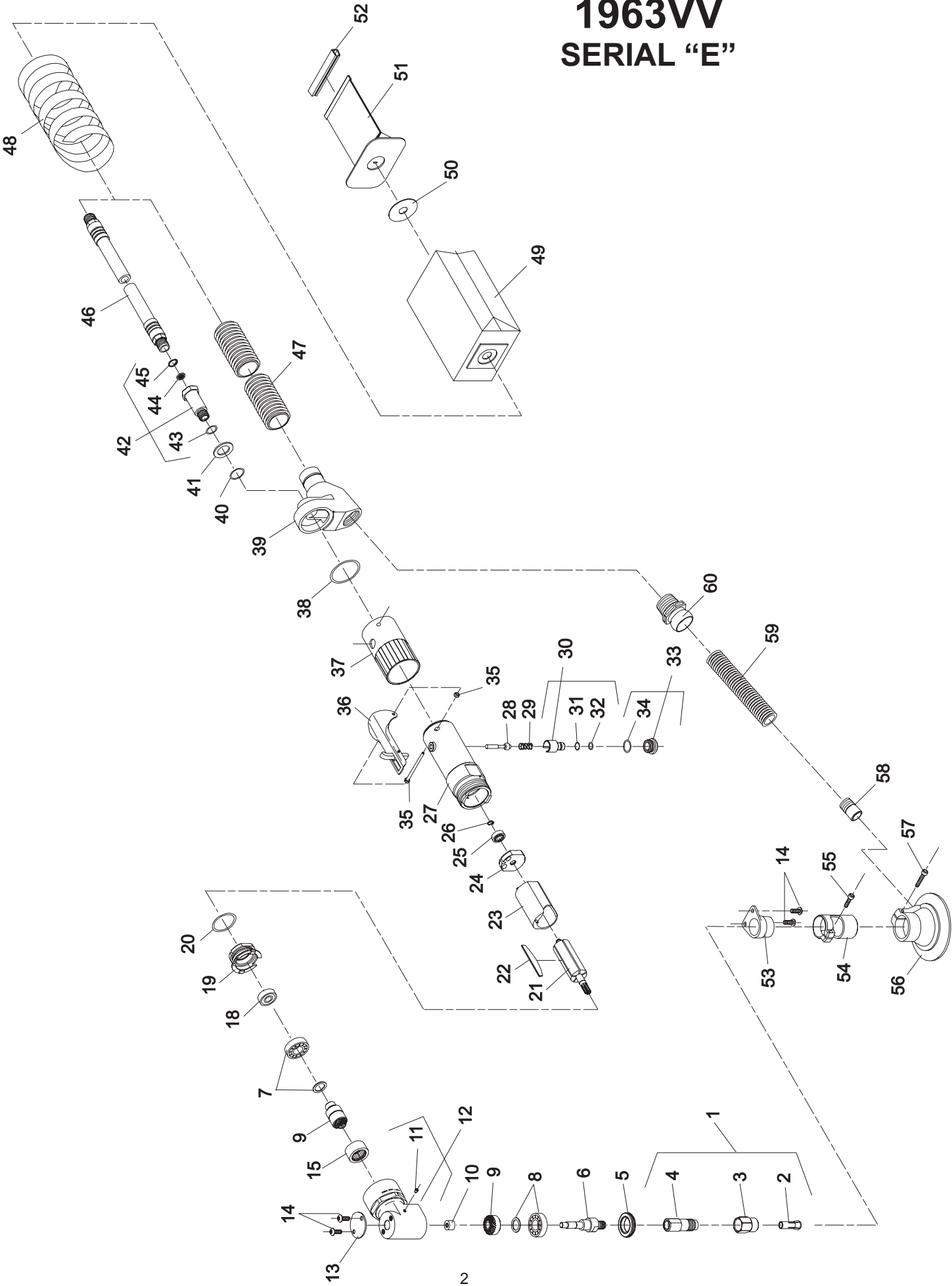
Fig. No.	Part No.	Description	Fig. No.	Part No.	Description
1.	43340	Chuck—1/4" Complete Collet	49.	911A	Ass'y—Disposable Dust Bag
2.	44440	Collet 1/4" (1963VV)			[Includes Figs. 49, 50, 52, & (1 only) 51]
3.	21097	Nut—Collet 11/16" Hex (1963VV)		65768	Bag—Outer
4.	21096	Body—Collet (3/8-24) (1963VV)	50.	65770	Washer—Retainer (1963VV, 1965VV)
5.	44776	Retainer—Bearing	51.	912	Bag—Filter (1963VV, 1965VV)(5 Pack)
6.	65961	Spindle—Output (1963VV, 1965V, 1965VV)	52.	65771	Clip—Bag Closer (1963VV, 1965VV)
	66286	Spindle—Output (5/8-11)	53.	65832	Adapter—Shroud (1963VV)
7.	63234	Ass'y—Bearing & Spacer (Pinion)	54.	65746	Adapter—Shroud (1963VV)
8.	65860	Ass'y—Bearing & Spacer (Gear)	55.	06500	Screw—Cap Soc Hex Mach (8-32 x 5/8)(1963VV)
9.	19736	Gear Set	56.	65744	Shroud—3" (1963VV)
10.	10082	Bearing—Needle	57.	06601	Screw—Cap Soc Hex Mach (8-32 x 7/8)(1963VV)
11.	30375	Fitting—Grease	58.	65738	Insert—Hose (1963VV)
12.	65388	Head—Angle	59.	65976	Hose—Vacuum (1963VV)
13.	35708	Cover	60.	65946	Connector—3/4 NPT (1963VV, 1965VV)
14.	07097	Screw—Button Soc Hex Mach (10-24 x 1/2) (1963VV-Quantity 4*) (1965V, 1965VV-Quantity 2*)	61.	65435	Adapter—Shroud (1965V, 1965VV)
15.	10081	Bearing—Needle	62.	35033	Washer (1965V, 1965VV)(3)*
18.	10220	Bearing—Ball	63.	07092	Screw—Hex Soc Hd (10-24 x 1)(2)*(1965V, 1965VV)
19.	65335	End Plate—Front	64.	07090	Screw—Cap Soc Hex Mach (10-24 x 3/8) (1965V, 1965VV)
20.	14342	Ring—"O"	65.	65434	Ass'y—Vacuum Shroud (1965V, 1965VV)
21.	54861	Rotor	66.	65674	Shroud—Brush (1965V, 1965VV)
22.	63192	Vane (Set of 5)	67.	65136	Brush (1965V, 1965VV)
23.	65916	Cylinder	68.	2344	Disc Backing 5" (3/8-24)(1965V, 1965VV)
24.	10552	End Plate—Rear		2364	Disc Backing 5" (5/8-11)(1965V-5/8, 1965VV-5/8)
25.	10230	Bearing—Ball	69.	65934	Ring—"O" (1965V)
26.	21491	Ring—Retaining	70.	65895	Adapter—Vacuum Hose, 1 1/4" Right Angle (1965V)
27.	64036	Housing—Lever (Non-Reversing)	71.	874	Hose—Vacuum (1965V)
28.	63241	Ass'y—Valve	72.	65948	Hose—Vacuum (1965VV)
29.	21427	Spring	73.	40116	Silencer Material (1965V)
30.	54843	Control—Speed	74.	2357	Handle—Auxiliary (1965V, 1965VV)
31.	14394	Ring—"O"	75.	563	Nut—Disk Retaining (Package of 6)(1965V, 1965VV)
32.	14291	Ring—"O"		562	Nut—Disk Retaining (5/8-11) (1965V-5/8, 1965VV-5/8)
33.	54844	Retainer—Speed Control	COMPLETE ASSEMBLIES:		
34.	14309	Ring—"O"	63444	Ass'y—Housing (Non-Reversing) (Includes Figs. 27 thru 30, 33, 37, 38, 42, 73) (1965V)	
35.	66344	Ass'y—Pin	65953	Ass'y—Housing (Non-Reversing) (Includes Figs. 27 thru 30, 33, 37, 38) (1963VV, 1965VV)	
36.	63258	Ass'y—Lever	66347	Ass'y—Motor (Includes Figs. 18 thru 26) (1963VV, 1965V, 1965VV)	
37.	65949	Cover—Housing (Non-Reversing) (1963VV, 1965VV)	65957	Ass'y—Angle Head (Includes Figs. 5 thru 15) (1963VV, 1965V, 1965VV)	
	04042	Cover—Housing (Non-Reversing)(1965V)	66349	Ass'y—Angle Head (Includes Figs. 5 thru 15) (1965V-5/8, 1965VV-5/8)	
38.	14333	Ring—"O" (1965V, 1965V-5/8)	NOT SHOWN:		
	14313	Ring—"O" (1963VV, 1965VV, 1965VV-5/8)	30506	Wrench—Allen 3/16" (1965V, 1965VV)(1965V-5/8, 1965VV-5/8)	
39.	65433	Extractor (1963VV, 1965VV)	30465	Wrench 9/16" (1963VV)	
40.	14281	Ring—"O" (1963VV, 1965VV)	30466	Wrench 11/16" (1963VV)	
41.	25206	Washer (1963VV, 1965VV)	68015	Wrench—Spanner (1965V-5/8, 1965VV-5/8)	
42.	54837	Adapter—Intake (Includes Figs. 42 thru 45)	*Order Quantity As Required		
43.	14312	Ring—"O"	FURNISH CATALOG, SERIAL, AND MODEL NUMBER WHEN ORDERING PARTS		
44.	30463	Screen	Printed In U.S.A.		
45.	21541	Ring—Retaining			
46.	1376	Ass'y—Leader Hose 6 Ft.			
47.	853	Hose—Dust Collection (6 Ft.)(1963VV, 1965VV)			
48.	65844	Wrap—Spiral			

SIoux

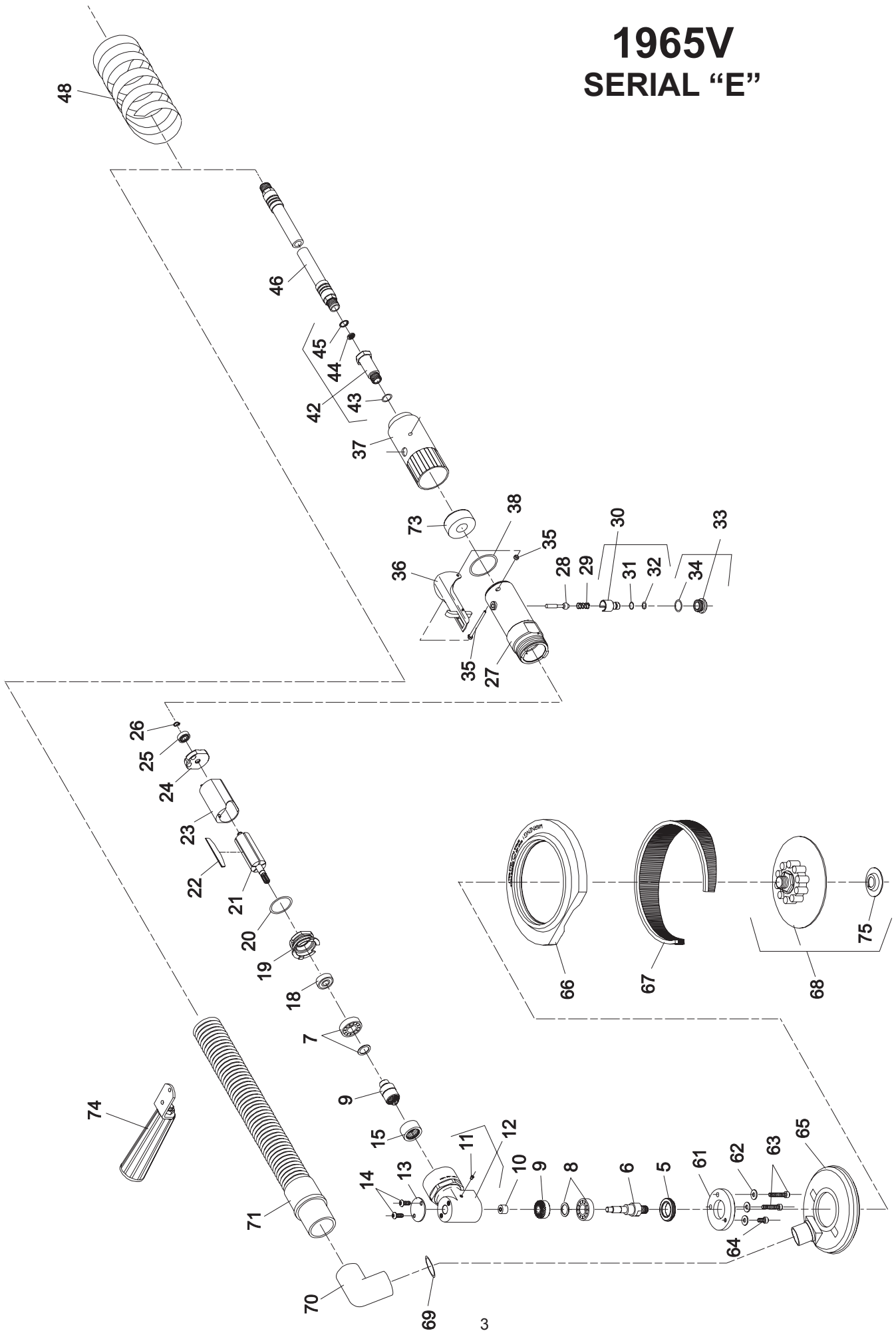
TOOLS INC.

250 SNAP-ON DRIVE ■ PO BOX 1596 ■ MURPHY, NC 28906 ■ USA ■

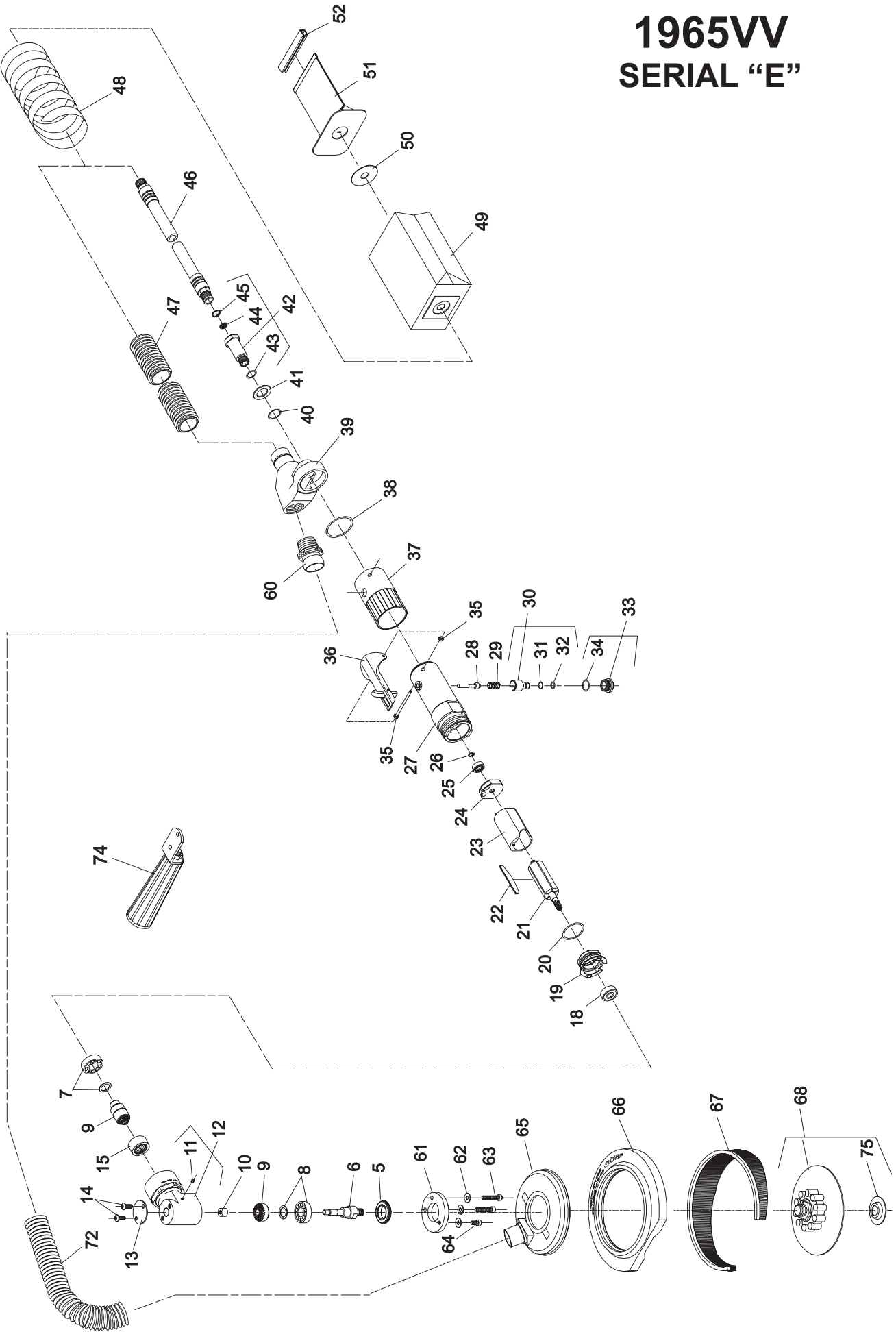
1963VV SERIAL "E"



1965V SERIAL "E"



1965VV SERIAL "E"



This pdf incorporates the following model numbers:

1963VV, 1965V, 1965VV, 1965V, 1965VV