



NOTE: Parts are no longer available for this tool.

The manual will continue on the next page.



PARTS LIST FOR

1963VV, 1965V, & 1965VV

1965V-5/8, 1965VV-5/8

SERIAL "D"

Form Z283A
Date 8-95

Fig. No.	Part No.	Description
1.	43340	Chuck—1/4" Complete Collet
2.	44440	Collet 1/4" (1963VV)
3.	21097	Nut—Collet 11/16" Hex (1963VV)
4.	21096	Body—Collet (3/8-24) (1963VV)
5.	44776	Retainer—Bearing
6.	65961	Spindle—Output (1963VV, 1965V, 1965VV)
	66286	Spindle—Output (5/8-11)
7.	63234	Ass'y—Bearing & Spacer (Pinion)
8.	65860	Ass'y—Bearing & Spacer (Gear)
9.	19737	Gear Set (12000 RPM)
10.	10082	Bearing—Needle
11.	30375	Fitting—Grease
12.	65388	Head—Angle
13.	35708	Cover
14.	07097	Screw—Button Soc Hex Mach (10-24 x 1/2) (1963VV-Quantity 4*)(1965V, 1965VV-Quantity 2*)
15.	10081	Bearing—Needle
18.	10220	Bearing—Ball
19.	65335	End Plate—Front
20.	14342	Ring—"O"
21.	54861	Rotor
22.	63192	Vane (Set of 5)
23.	64057	Cylinder
24.	10552	End Plate—Rear
25.	10230	Bearing—Ball
26.	21491	Ring—Retaining
27.	64036	Housing—Lever (Non-Reversing)
28.	63241	Ass'y—Valve
29.	21427	Spring
30.	54843	Control—Speed
31.	14394	Ring—"O"
32.	14291	Ring—"O"
33.	54844	Retainer—Speed Control
34.	14309	Ring—"O"
35.	66344	Ass'y—Pin
36.	63258	Ass'y—Lever
37.	65949	Cover—Housing (Non-Reversing) (1963VV, 1965VV)
	04042	Cover—Housing (Non-Reversing)(1965V)
38.	14313	Ring—"O"
39.	65433	Extractor (1963VV, 1965VV)
40.	14281	Ring—"O" (1963VV, 1965VV)
41.	25206	Washer (1963VV, 1965VV)
42.	54837	Adapter—Intake (Includes Figs. 42 thru 45)
43.	14312	Ring—"O"
44.	30463	Screen
45.	21541	Ring—Retaining
46.	1376	Ass'y—Leader Hose 6 Ft.
47.	853	Hose—Dust Collection (6 Ft.)(1963VV, 1965VV)
48.	65844	Wrap—Spiral

Fig. No.	Part No.	Description
49.	911A	Ass'y—Disposable Dust Bag [Includes Figs. 49, 50, 52, & (1 only) 51]
	65768	Bag—Outer
50.	65770	Washer—Retainer (1963VV, 1965VV)
51.	912	Bag—Filter (1963VV, 1965VV)(5 Pack)
52.	65771	Clip—Bag Closer (1963VV, 1965VV)
53.	65832	Adapter—Shroud (1963VV)
54.	65746	Adapter—Shroud (1963VV)
55.	06500	Screw—Cap Soc Hex Mach (8-32 x 5/8)(1963VV)
56.	65744	Shroud—3" (1963VV)
57.	06601	Screw—Cap Soc Hex Mach (8-32 x 7/8)(1963VV)
58.	65738	Insert—Hose (1963VV)
59.	65976	Hose—Vacuum (1963VV)
60.	65946	Connector—3/4 NPT (1963VV, 1965VV)
61.	65435	Adapter—Shroud (1965V, 1965VV)
62.	35033	Washer (1965V, 1965VV)(3)*
63.	07092	Screw—Hex Soc Hd (10-24 x 1)(2)*(1965V, 1965VV)
64.	07090	Screw—Cap Soc Hex Mach (10-24 x 3/8) (1965V, 1965VV)
65.	65434	Ass'y—Vacuum Shroud (1965V, 1965VV)
66.	65674	Shroud—Brush (1965V, 1965VV)
67.	65136	Brush (1965V, 1965VV)
68.	2344	Disc Backing 5" [Includes (1) Fig. 75](1965V, 1965VV)
	66292	Disc Backing 5" (5/8-11)
69.	65934	Ring—"O" (1965V)
70.	65895	Adapter—Vacuum Hose, 1 1/4" Right Angle (1965V)
71.	874	Hose—Vacuum (1965V)
72.	65948	Hose—Vacuum (1965VV)
73.	40116	Silencer Material (1965V)
74.	2357	Handle—Auxiliary (1965V, 1965VV)
75.	563	Nut—Disk Retaining (Package of 6)(1965V, 1965VV)
	66293	Nut—Disk Retaining (5/8-11)

COMPLETE ASSEMBLIES:

63444	Ass'y—Housing (Non-Reversing) (Includes Figs. 27 thru 30, 33, 37, 38, 42, 73)(1965V)
65953	Ass'y—Housing (Non-Reversing) (Includes Figs. 27 thru 30, 33, 37, 38)(1963VV, 1965VV)
65360	Ass'y—Motor (Includes Figs. 18 thru 26) (1963VV, 1965V, 1965VV)
65959	Ass'y—Angle Head (Includes Figs. 5 thru 15) (1963VV, 1965V, 1965VV)
66287	Ass'y—Angle Head (Includes Figs. 5 thru 15) (1965V-5/8, 1965VV-5/8)

NOT SHOWN:

30506	Wrench—Allen 3/16" (1965V, 1965VV)(1965V-5/8, 1965VV-5/8)
30465	Wrench 9/16" (1963VV)
30466	Wrench 11/16" (1963VV)
66306	Wrench—Spanner (1965V-5/8, 1965VV-5/8)

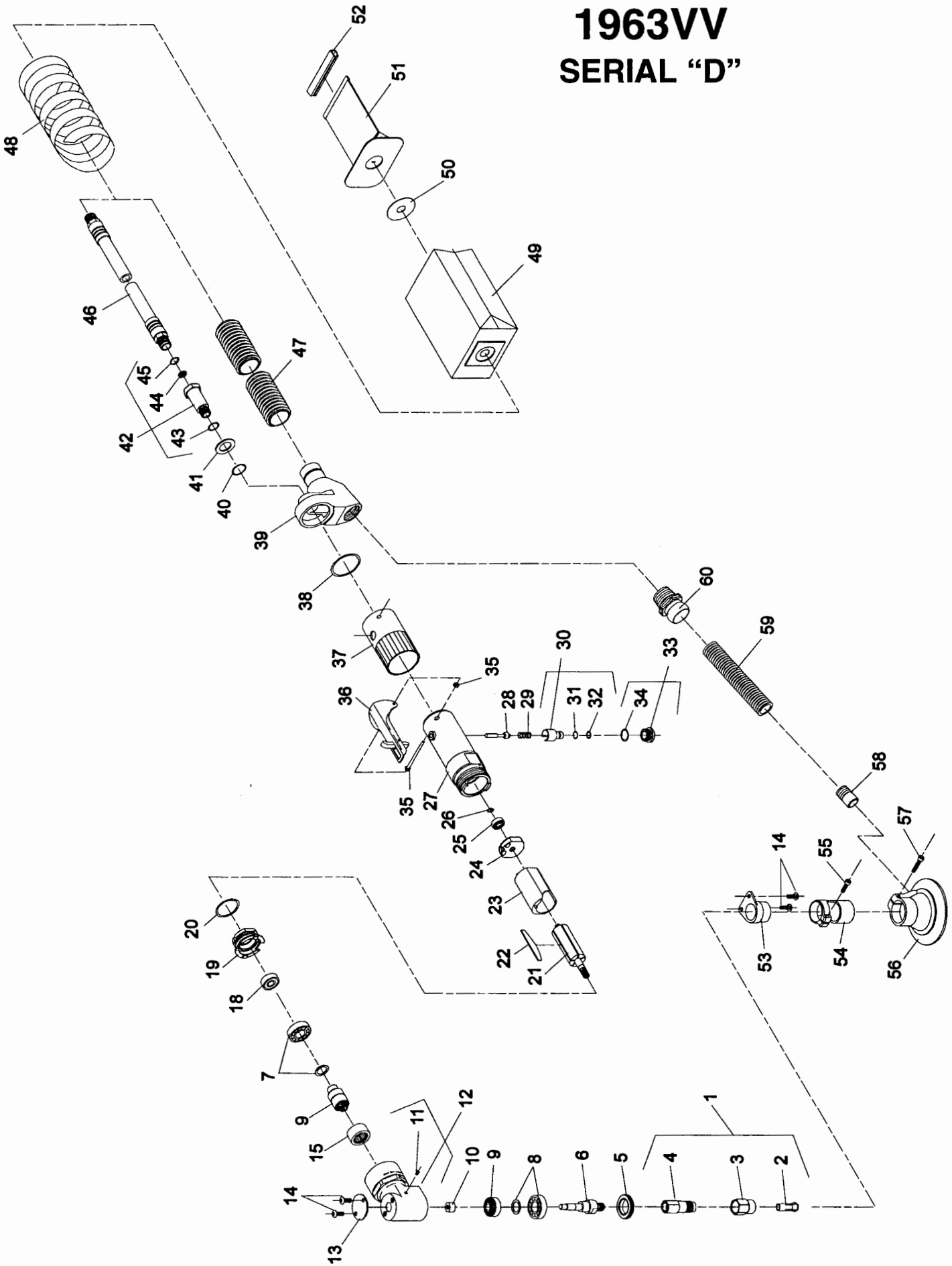
SIoux
TOOLS INC.

2901 FLOYD BOULEVARD ■ PO BOX 507 ■ SIOUX CITY, IOWA 51102-0507 ■

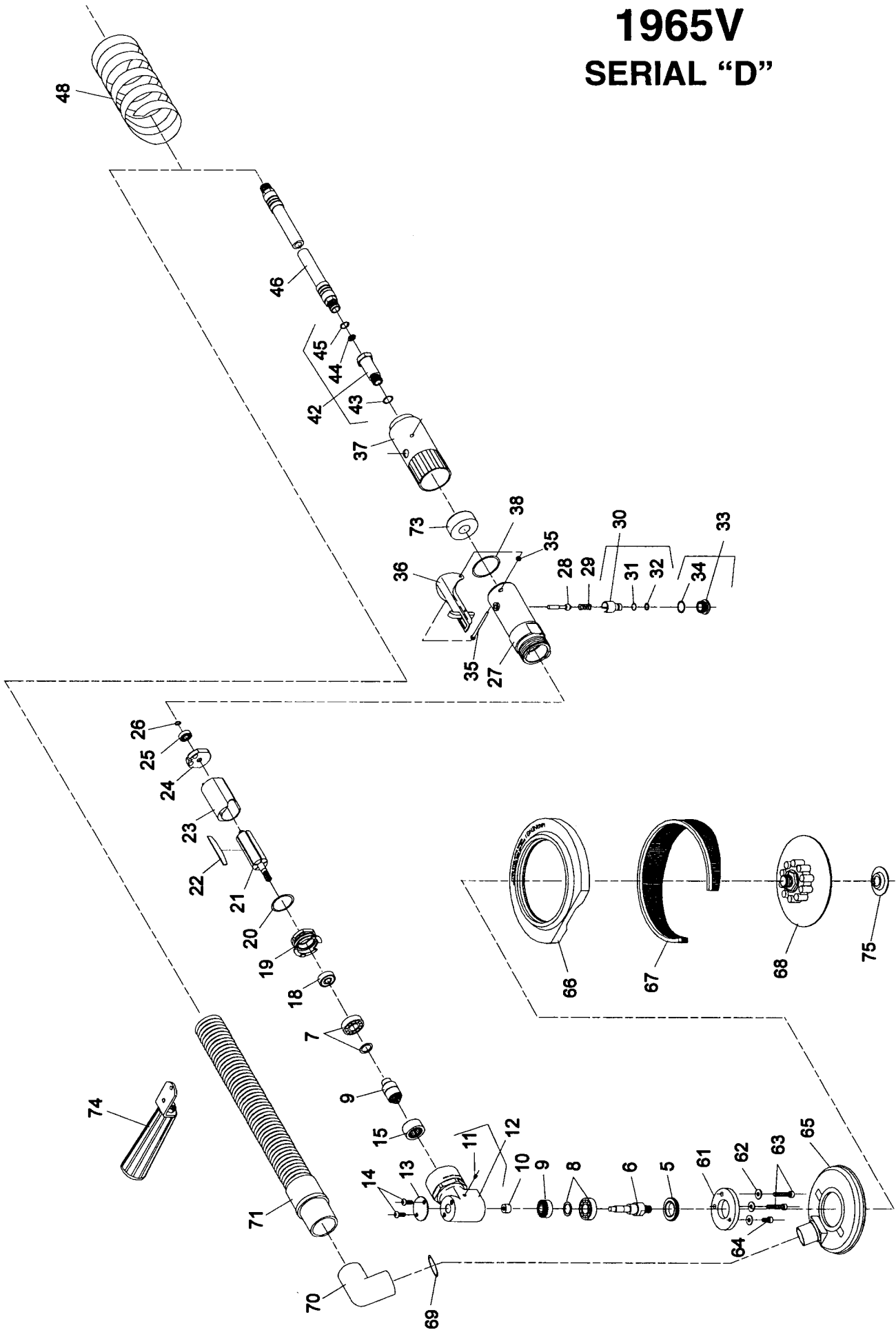
* Order Quantity As Needed
Furnish Catalog Number When Ordering Parts

Printed In U.S.A.

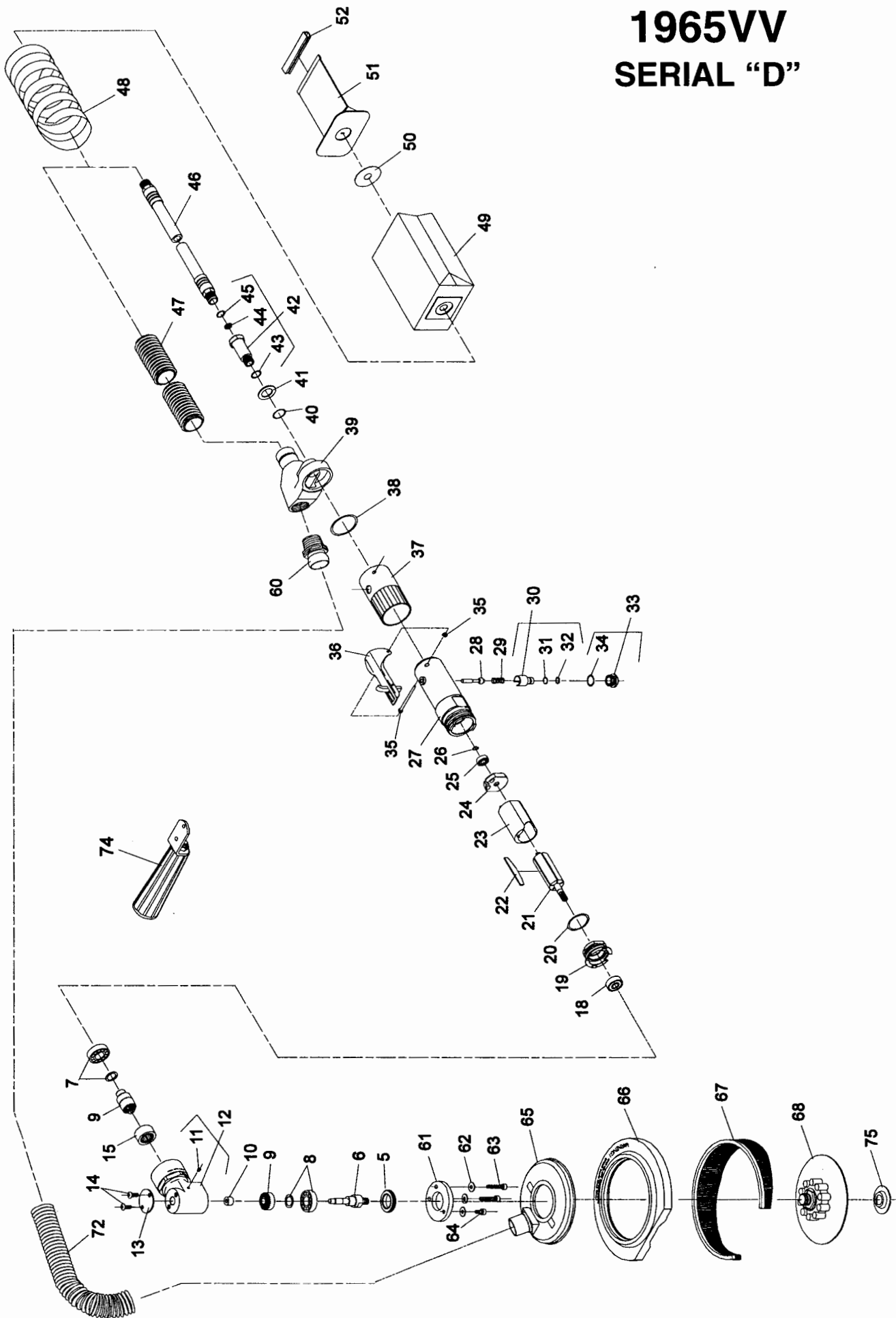
1963VV SERIAL "D"



1965V SERIAL "D"



1965VV SERIAL "D"



This pdf incorporates the following model numbers:

1963VV, 1965V, 1965VV, 1965V, 1965VV