



PARTS LIST FOR NO. 1662A MODULAR AIR REGULATOR

CAUTION

EXCEPT as otherwise specified by the manufacturer, this product is specifically designed for compressed air service, and use with any other fluid (liquid or gas) is a misapplication. For example, use with or injection of certain hazard liquids or gases in the system (such as alcohol or liquid petroleum gas) could be harmful to the unit or result in a combustible condition or hazardous external leakage. Manufacturer's warranties are void in the event of misapplication, and manufacturer assumes no responsibility for any resulting loss.

The relief flow capacity of relieving type regulators is limited. Under some operating conditions, the secondary (outlet) pressure could increase above the initial setting. If over-pressure conditions could cause malfunction or failure of downstream equipment, additional external pressure relief devices of suitable capacity must be installed.

Before using with fluids other than air for non industrial applications or for life support systems, consult manufacturer for approval

INSTALLATION

1. Install as close as possible to where regulated air is needed.
2. Install the unit with the air flowing through the body in the direction indicated by the arrow.
3. Install the same pipe size unit as the pipe line in use. Avoid using fittings, couplings etc. that restrict the airflow, unless maximum flow is not needed.
4. Regulator may be installed with the adjusting knob in any position. Attach gauge to one 1/4" female gauge port and plug the other 1/4" female port, or use it as a regulated outlet port.
5. Turning the adjusting screw clockwise increases the regulated pressure and turning it counterclockwise decreases the regulated pressure.
6. Panel mount regulators require a 1 7/8" diameter hole and are mountable on panels from 1/8" to 1/2" thick.

MAINTENANCE

1. The regulator can be disassembled for servicing without removal from line.
2. Occasionally remove bottom plug and clean plug, body and valve seat (vent air line on both sides of regulator).
3. TO DISASSEMBLE-shut off air to regulator and vent air line on both sides of regulator. Turn adjusting screw counterclockwise to relieve compression on spring. Remove screw, lock knob, adjusting knob (panel mount nut, if used), tamper-resistant kit (on tamper-resistant models) and cover cap. Remove the six screws, cover and regulating spring. Diaphragm assembly can now be removed. By removing bottom plug and spring the valve stem can be removed from the bottom of the regulator.
4. IF UNIT WILL NOT REGULATE TO DESIRED PRESSURE OR IF PRESSURE BECOMES EXCESSIVE-remove bottom plug, spring, and valve assembly. Clean and check O-ring, valve stem and valve seat for water damage. Replace worn or damaged parts. Install Repair Kit No. 65785 for self-relieving models for complete overhaul.
5. IF UNIT LEAKS AT RELIEF PORT, install repair kit.
6. TO REPLACE BODY O-RING-This O-ring is located above a metal washer through which the valve stem passes and which cannot be removed. Using a pointed probe of some kind, pull O-ring out. Force new O-ring through washer hole into O-ring cavity.

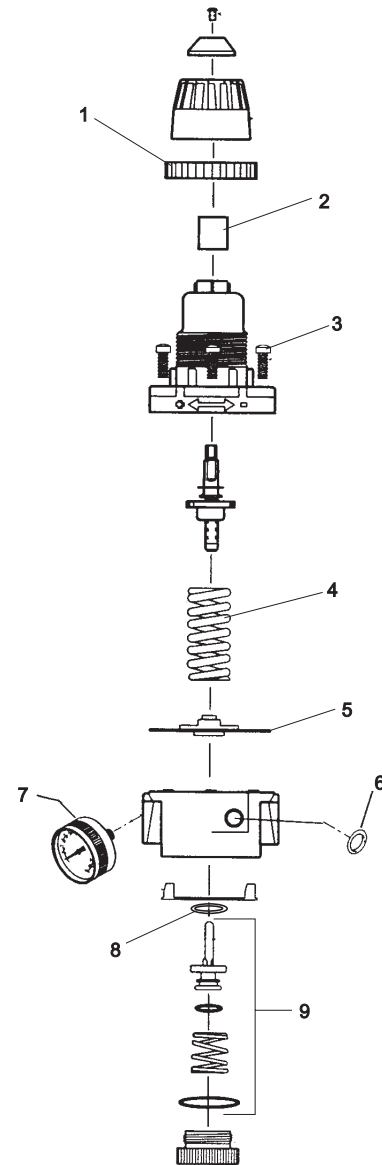


Fig. No.	Part No.	Name
1.	00229	Panel Mount Lock Nut
2.	65783	Tamper Resistant Kit (Optional)
3.	07587	Screw
4.	00167	Spring
5.	00168	Ass'y—Diaphragm
6.	00235	O-Ring For End Blocks (Set of 10)
7.	00121	0-160 Pressure Gage
8.	14308	O-Ring
9.	65784	Ass'y—Valve
	65785	Repair Kit (Includes Fig. No.s 5, 8 & 9)

**SIoux
TOOLS INC.**

250 SNAP-ON DRIVE ■ PO BOX 1596 ■ MURPHY, NC 28906 ■ USA ■

Furnish Catalog And Serial Number When Ordering Parts

This pdf incorporates the following model numbers:

1660B, 1662A