



# PARTS LIST FOR NO. 1653MA 3/4" FILTER

Form No. Z237  
Date 3/93

## WARNING

**DO NOT PLACE PLASTIC BOWL UNIT IN SERVICE WITHOUT METAL BOWL GUARD INSTALLED.**

Plastic bowl units are sold only with metal bowl guards. To minimize the danger of flying fragments in the event of plastic bowl failure, the metal bowl guards should not be removed. If the unit is in service without the metal bowl guard installed, manufacturer's warranties are void, and the manufacturer assumes no responsibility for any resulting loss

**IF UNIT HAS BEEN IN SERVICE AND DOES NOT HAVE A METAL BOWL GUARD. ORDER ONE AND INSTALL BEFORE PLACING BACK IN SERVICE.**

### CAUTION

Certain compressor oils, chemicals, household cleaners, solvents, paints, and fumes will attack plastic bowls and can cause bowl failure. Do not use near these materials. When bowl becomes dirty, replace bowl or wipe only with a clean dry cloth. Reinstall metal bowl guard or buy and install a metal bowl guard. Immediately replace any crazed, cracked, damaged, or deteriorated plastic bowl with a metal bowl or a new plastic bowl and a metal bowl guard.

WE CANNOT POSSIBLY LIST ALL HARMFUL SUBSTANCES, SO CHECK WITH A MOBAY CHEMICAL OR GENERAL ELECTRIC OFFICE FOR FURTHER INFORMATION ON POLYCARBONATE PLASTIC.

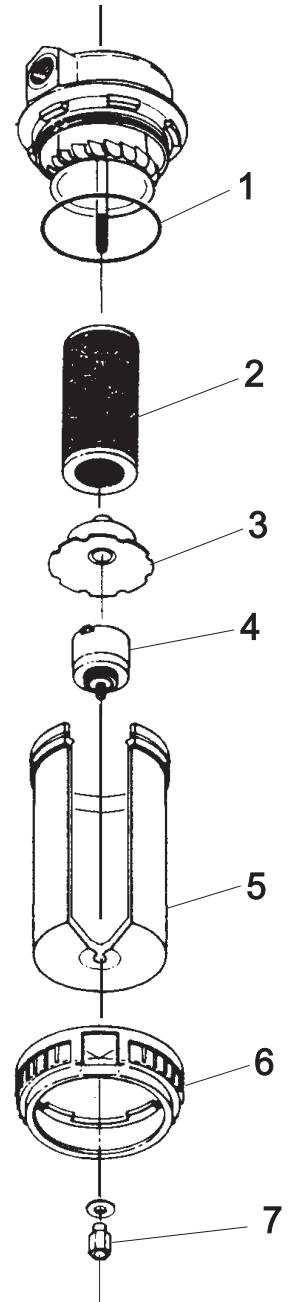
Except as otherwise specified by the manufacturer, this product is specifically designed for Compressed Air Service, and use with any other fluid (liquid or gas) is a misapplication. For example, use with or injection of certain hazardous liquids or gases in the system (such as alcohol or liquid petroleum gas), could be harmful to the unit or result in a combustible condition or hazardous external leakage. Manufacturer's warranties are void in the event of misapplication, and manufacturer assumes no responsibility for any resulting loss. Before using with fluids other than air, or for non-industrial applications, or for life support systems, consult manufacturer for written approval.

## INSTALLATION

1. Refer to warning.
2. Install as close as possible to the equipment which requires filtered air.
3. Install the unit with the air flowing through the body in the direction indicated by the arrow.
4. Install a unit with the same pipe-size as the one in use. Avoid using fittings, couplings, etc., that restrict the airflow.
5. Do not install this filter on any application where the pressure drop will exceed 20 psi. Downstream from a quick opening valve, for example could cause a momentary pressure drop in excess of 20 psi.
6. A drain line with 1/8" NPT connection may be attached to the drain port if desired. Drain line should be 1/4" tubing or larger, as short as possible, and crimp-free.
7. Maximum pressure and temperature ratings are: transparent plastic bowls, 150 psig (10.3 bar) and 125°F (52°C); metal bowls, 200 psig (14 bar) and 175°F (79.4°C).
8. Install unit in a vertical position.

## MAINTENANCE

1. EACH TIME BOWL IS CLEANED OR THE FILTER ELEMENT REPLACED:
  - A. Depressurize unit.
  - B. Inspect seals and replace crazed, cracked, damaged, or deteriorated seals with original manufacturer's approved seals only.
2. A. IF UNIT HAS A RIGID FELT FILTER ELEMENT, replace or clean periodically by removing filter element, tapping it on hard surface, and blowing it off with air blow gun.
3. A. IF UNIT IS EQUIPPED WITH MECHANICAL DRAIN,
  1. Clean the small screen around the drain seal each time the element is cleaned or changed by removing drain and using air blow gun to dislodge contaminants. Blow dry with air blow gun.
4. Before placing unit in service be sure that the bowl and bowl guard are reinstalled and the clamp ring is securely locked in position.



| Fig. No. | Part No. | Name   |
|----------|----------|--|
| 1.       | 00205    | O-Ring   |
| 2.       | 00212    | Filter   |
| 3.       | 00213    | Baffle   |
| 4.       | 1667     | Automatic Mechanical Drain (Includes Seals & Screen) |
| 5.       | 00220    | Bowl—Metal   |
| 6.       | 00203    | Ring—Clamp   |
| 7.       | 00200    | Nut—Adaptor  |

# SIoux TOOLS INC.

250 SNAP-ON DRIVE ■ PO BOX 1596 ■ MURPHY, NC 28906 ■ USA ■

Furnish Catalog And Serial Number When Ordering Parts

This pdf incorporates the following model numbers:

1651MA, 1653MA