

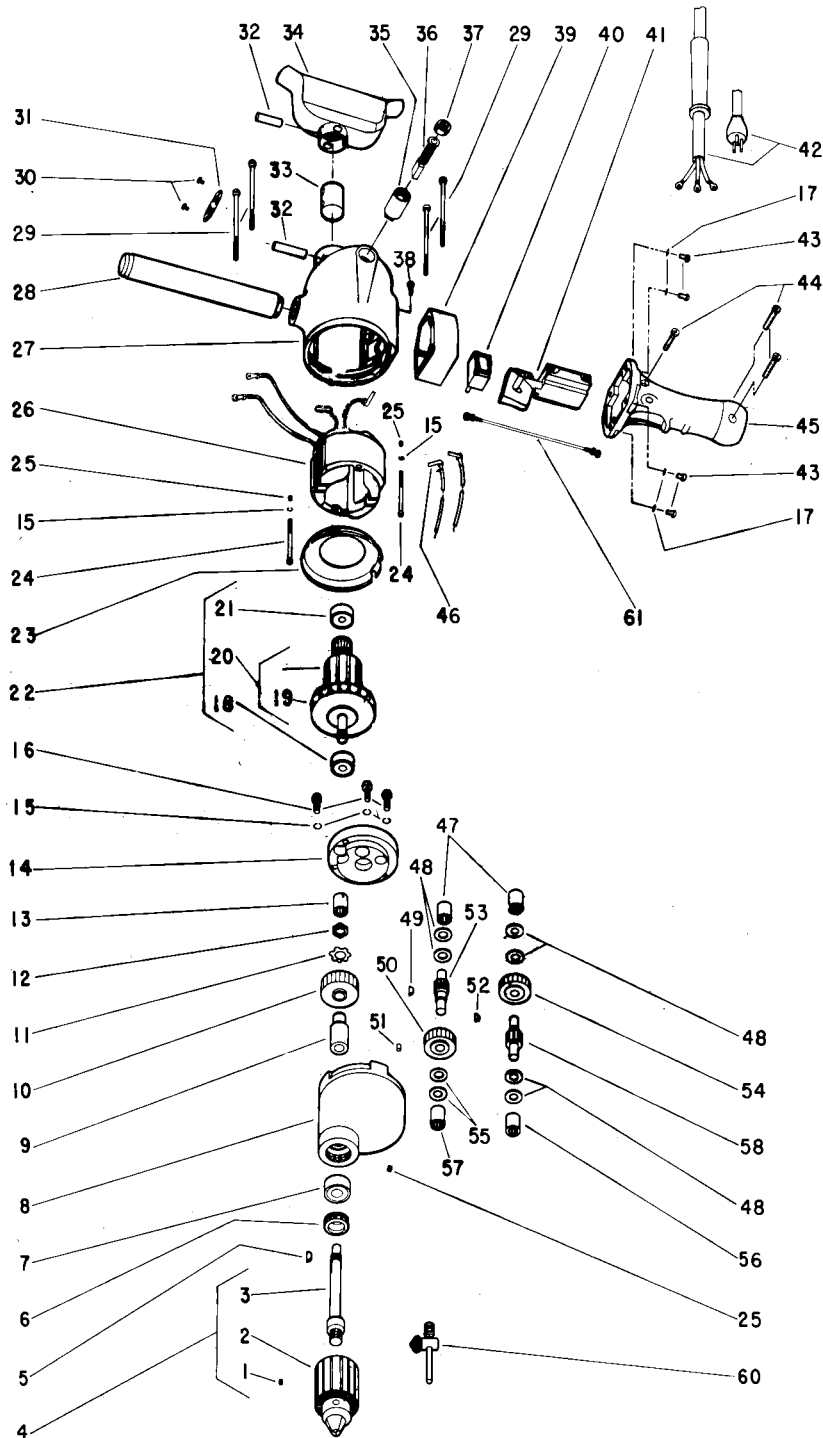


NOTE: Parts are no longer available for this tool.

The manual will continue on the next page.



PARTS LIST FOR 1565, 1565R 3/4" HEAVY DUTY ELECTRIC DRILL (SERIAL "F")



SIoux
TOOLS INC.

2901 FLOYD BOULEVARD ■ SIOUX CITY, IOWA 51102-0507 ■



PARTS LIST FOR 1565, 1565R 3/4" HEAVY DUTY ELECTRIC DRILL (SERIAL "F")

| Fig. No. | Part No. | Name |
|----------|----------|--|
| 1. | 08604 | Screw 5/16 (1565R) |
| 2. | 21016 | Chuck--Jacobs 3/4" Cap |
| 3. | 65292 | Spindle--Chuck |
| 4. | 65570 | Ass'y.--Chuck & Spindle (1565R) |
| 5. | 30014 | Key--#404 Woodruff |
| 6. | 23042 | Seal--Oil |
| 7. | 10131 | Bearing--Ball |
| 8. | 12049 | Case--Gear (Incl's. Fig. No. 51, 56 & 57) |
| 9. | 24057 | Spacer--Gear |
| 10. | 19036 | Gear--Chuck Spindle |
| 11. | 25073 | Washer--Lock |
| 12. | 24062 | Nut--Tool Spindle |
| 13. | 10008 | Bearing--Needle |
| 14. | 12040 | Cover--Gear Case (Incl. [2] Fig. 47 & [1] Fig. 13) |
| 15. | 09724 | Washer--Lock #10 (5)* |
| 16. | 07119 | Screw--Phil. #10-24 x 1 (3)* |
| 17. | 35234 | Washer (4)* |
| 18. | 10251 | Bearing--Ball |
| 19. | 21569A | Fan |
| 20. | 65293 | Armature with Fan |
| 21. | 10210 | Bearing--Ball |
| 22. | 65330 | Ass'y.--Armature Fan & Bearing |
| 23. | 25079 | Plate--Baffle |
| 24. | 07136 | Screw--#10-24 x 2-1/8 (2)* |
| 25. | 07000 | Screw--#10-24 x 3/16 (3)* |
| 26. | 28949 | Field--Motor (Rev.) 1565R |
| | 28938 | Field--Motor (Non. Rev.) 1565 Incl. [2] Fig. 46 |
| 27. | 12777 | Housing (Incl. Fig's. 25 & 35 [2 ea.] |
| 28. | 40096 | Handle--Side |
| 29. | 07130 | Screw--#10-24 x 5-11/16 (4)* |
| 30. | 06090 | Screw--#4 x 1/2 (6)* |
| 31. | 23000 | Ass'y.--Cap Inspection Hole (3)* |
| 32. | 30761 | Pin (2)* |
| 33. | 14148 | Insulator |
| 34. | 53728 | Ass'y.--Spade Handle |
| 35. | 18083 | Holder--Brush (2)* |

| Fig. No. | Part No. | Name |
|----------|----------|---|
| 36. | 18031 | Brushes--Motor (2) Pair |
| 37. | 18120 | Cap--Holder Brush (2)* |
| 38. | 07204 | Screw--Ground #10-24 x 5/16 |
| 39. | 12393 | Adaptor--Reversing Switch (1565R) |
| 40. | 18383 | Switch--Reversing (1565R) (Incl's. Fig. 61) |
| | 30697 | Locknut--Hex (2)* |
| 41. | 18204 | Switch |
| 42. | 18416 | Ass'y.--Cord & Terminals |
| | 18417 | Ass'y.--Cord & Terminals (30 ft.) |
| 43. | 07240 | Screw--#10-24 x 1-3/4 (1565) (4)* |
| | 07223 | Screw--#10-24 x 5/8 (1565R) (4)* |
| 44. | 06657 | Screw--#8-32 x 1-1/8 (3)* |
| 45. | 53786 | Ass'y.--Handle |
| 46. | 18860 | Clip--Spring [only] (2)* |
| 47. | 10003 | Bearing--Needle (2)* |
| 48. | 25075 | Spacer (6)* |
| 49. | 30010 | Key--Woodruff (Modified) |
| 50. | 19038 | Gear--2nd Compound |
| 51. | 24009 | Pin--Dowel |
| 52. | 30001 | Key--Woodruff (#304) |
| 53. | 19408 | Pinion--2nd Compound |
| 54. | 19035 | Gear--1st Compound |
| 55. | 25074 | Washer--Thrust (2)* |
| 56. | 10005 | Bearing--Needle |
| 57. | 10007 | Bearing--Needle |
| 58. | 19410 | Pinion--1st Compound |
| 60. | 30031 | Key--Chuck |
| | 14273 | Holder--Chuck Key |
| 61. | 28147 | Ass'y--Lead Wire |

PARTS NOT SHOWN

| | |
|-------|---------------------|
| 20300 | Plate--Name (1565) |
| 65569 | Plate--Name (1565R) |
| 09954 | Screw--Drive (2)* |

*Order Quantity As Needed

Furnish Catalog, Serial and Model Number When Ordering Parts

**SIOUX
TOOLS INC.**

2901 FLOYD BOULEVARD ■ SIOUX CITY, IOWA 51102-0507 ■

Printed in U.S.A.

This pdf incorporates the following model numbers:

1565, 1565R