



NOTE: Parts are no longer available for this tool.

The manual will continue on the next page.



PARTS LIST FOR 1427 & 1428

Form Z155
Dated 9/90

AIR DRILLS (SERIAL "B")

WHEN ORDERING PARTS SPECIFY CATALOG AND SERIAL NUMBER

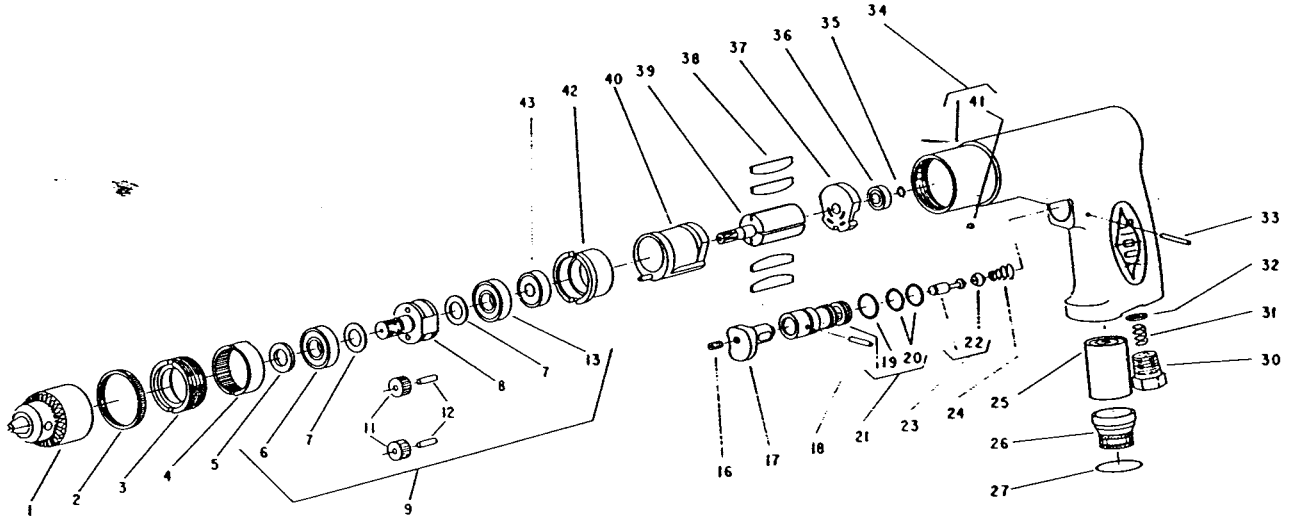


Fig- ure	Part No.	Name	Fig- ure	Part No.	Name
1	21019	Chuck - 1/4"	22	14325	Valve
	30202	Key - Chuck	23	43162	Ass'y - Valve
2	44922	Ring	24	21401	Spring
3	44923	Retainer	25	14150	Pad - Silencer
4	19189	Gear - Ring	26	44995	Deflector - Air
5	44924	Spacer	27	14366	Ring - "O"
6	10257	Bearing - Ball	30	30249	Bushing - Reducing
7	25680	Washer (2)*	31	21345	Spring - Lift
8	44920	Carrier - Gear (1427)	32	30463	Screen
	44921	Carrier - Gear (1428)	33	30625	Pin
9	43803	Ass'y - Planetary (1427)	34	12420	Housing
	43804	Ass'y - Planetary (1428)	35	21529	Ring - Retaining
11	19212	Gear - Idler (2)* (1427)	36	10255	Bearing - Ball
	19195	Gear - Idler (2)* (1428)	37	10527	Plate - Upper End
12	30453	Pin (2)*	38	43400	Vane - Rotor (Set of 4)
16	06457	Screw	39	44879	Rotor (1427)
17	11552	Trigger		44450	Rotor (1428)
18	30421	Pin - Roll	40	44937	Cylinder
19	14312	Ring - "O"	41	30375	Fitting - Grease
20	14290	Ring - "O" (2)*	42	13204	Plate - Lower End
21	43150	Ass'y - Valve Seat	43	10256	Bearing - Ball

*ORDER QUANTITY AS NEEDED

**SIoux
TOOLS INC.**

2901 FLOYD BOULEVARD ■ SIOUX CITY, IOWA 51102 ■

PRINTED IN U.S.A.

This pdf incorporates the following model numbers:

1427, 1428