



NOTE: Parts are no longer available for this tool.

The manual will continue on the next page.



INSTRUCTIONS & PARTS LIST FOR 2P1900RS & 2L1900RS RIVET SHAVER

BE SURE TO LUBRICATE

All Sioux Air Tools are manufactured to extremely close tolerances. Reasonable care and preventative maintenance will greatly prolong their service life.

This line of tools is designed for a long life of continuous duty on assembly lines, with a minimum of service and maintenance. Rotating parts are mounted on extra-capacity ball bearings, rotors and spindles are finished to extreme accuracy for power and low air consumption, gears and pinions are oversize and correctly hardened for quietness and long life.

Special attention has been given to ease of servicing. These tools can be disassembled and reassembled with ease.

Before connecting the tool, blow the air line to remove water and dirt which may have accumulated. This is especially important for a new line or when the line has not been used for some time.

LUBRICATION

GEARS

The gears are lubricated at the factory. Every 100 hours of operation add 1/4 oz. of Sioux Grease No. 1198.

AIR MOTORS

Sioux Air line lubricators are recommended. When used adjust lubricator to deliver 2 to 4 drops of Sioux Air Motor Oil No. 288 per minute to the air tool. If tool is not used with a lubricator, place 10 to 15 drops of Sioux No. 288 oil into air inlet twice daily.

OPERATION

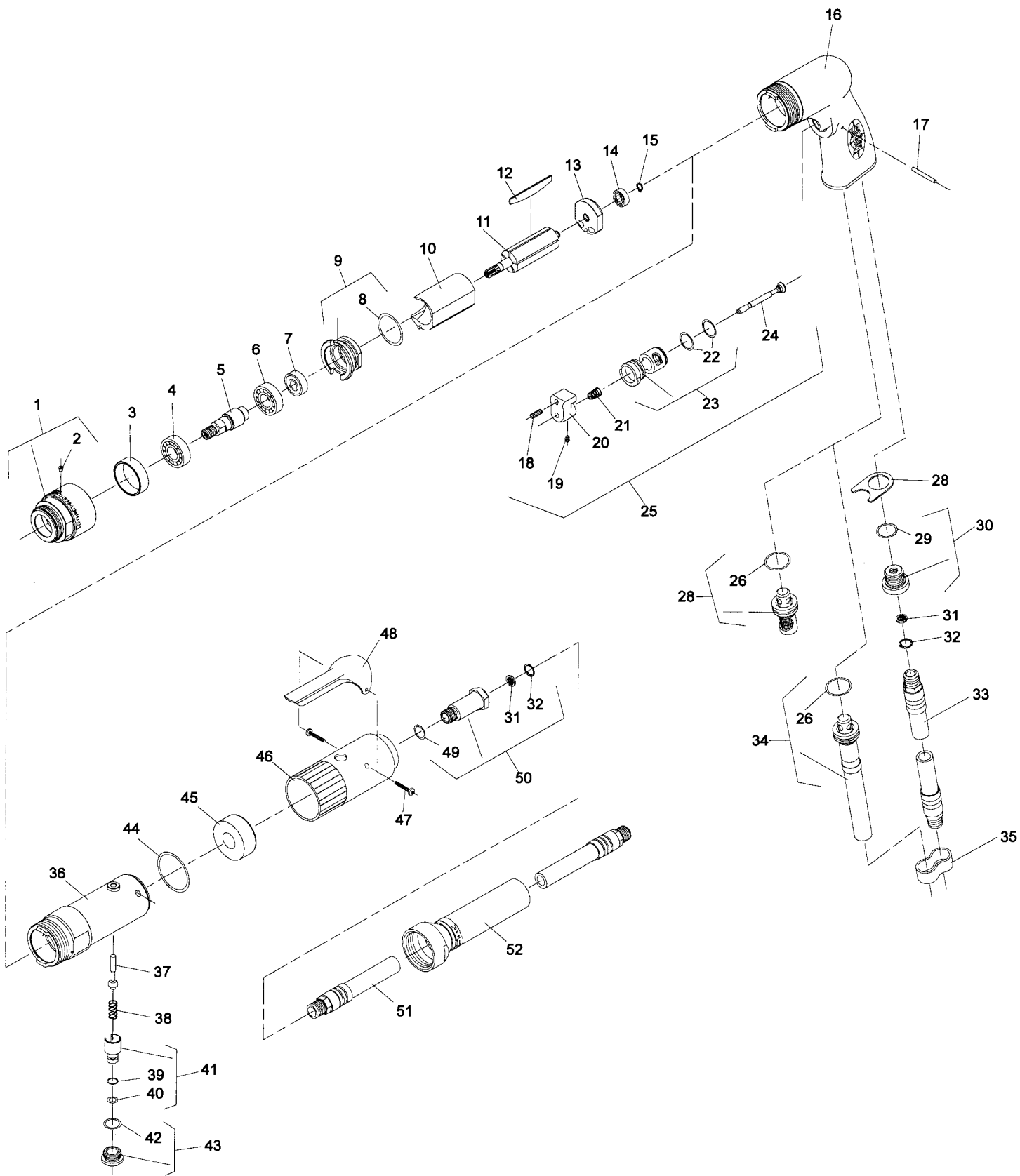
The air motor is started by depressing the operating lever or trigger. Motor speed may be controlled by adjusting the slotted head control which is located on the tool housing or on some models on the trigger surface.

If the tool is equipped with reversing button, always depress the button fully to obtain maximum power.

HOSE AND HOSE CONNECTION

Air supply hose should not be less than 3/8" I.D. If extension hose is necessary, use 1/2" I.D. hose with couplings not less than 3/8" I.D.

SIoux™
TOOLS INC.



PARTS LIST FOR 2P1900RS & 2L1900RS RIVET SHAVER

Fig. No.	Part No.	Name	Fig. No.	Part No.	Name
1.	64004	Case—Gear	33.	1376	Ass'y—Leader Hose
2.	30375	Fitting—Grease	34.	63546	Ass'y—Exhaust Tube
3.	64044	Spacer	35.	40153	Clip—Hose (3)
4.	10929	Bearing—Ball	36.	64036	Housing
5.	64041	Spindle—Chuck	37.	63241	Ass'y—Valve
6.	10239	Bearing—Ball	38.	21427	Spring
7.	10220	Bearing—Ball	39.	14394	Ring—"O"
8.	14342	Ring—"O"	40.	14291	Ring—"O"
9.	13550	End Plate—Front	41.	54843	Speed—Control
10.	64057	Cylinder	42.	14309	Ring—"O"
11.	54861	Rotor (8 Tooth)	43.	54844	Retainer—Speed Control
12.	63192	Ass'y—Rotor Vane (Set of 5)	44.	14333	Ring—"O"
13.	10552	End Plate—Rear	45.	40116	Material—Exhaust
14.	10230	Bearing—Ball	46.	04042	Cover—Housing
15.	21491	Ring—Retaining	47.	65499	Screw—Pan Hd (Selftap) (#6-32 x 3/4 Long)(2)*
16.	12660	Housing—Pistol	48.	35737	Lever
17.	40157	Pin—Dowel (1/8" x 1-1/8")	49.	14312	Ring—"O"
18.	06459	Screw—Set (#8-32 x 1/2")	50.	54837	Adaptor—Intake
19.	06458	Screw—Set (#8-32 x 3/16")	51.	63355	Ass'y—Hose Exhaust
20.	12676	Trigger	52.	1317	Hose—Leader
21.	21401	Spring			
22.	14378	Ring—"O" (2)*			
23.	11600	Body—Valve (Non-Rev)			
24.	54222	Valve			
25.	63359	Ass'y—Trigger (Non-Rev)	63361		Ass'y—Pistol Handle (Non-Rev) (Includes Figs. 16-32)
26.	14366	Ring—"O"	63444		Ass'y—Lever Handle (Non-Rev) (Includes Figs. 36-52,31,32)
27.	63545	Ass'y—Silencer			
28.	54968	Retainer—Exhaust			
29.	14281	Ring—"O"			
30.	54955	Adaptor—Inlet			
31.	30463	Screen			
32.	21541	Ring—Retaining			

*Order Quantity As Needed

Furnish Catalog, Serial and Model Number When Ordering Parts



PARTS LIST FOR RIVET SHAVER ASSEMBLY

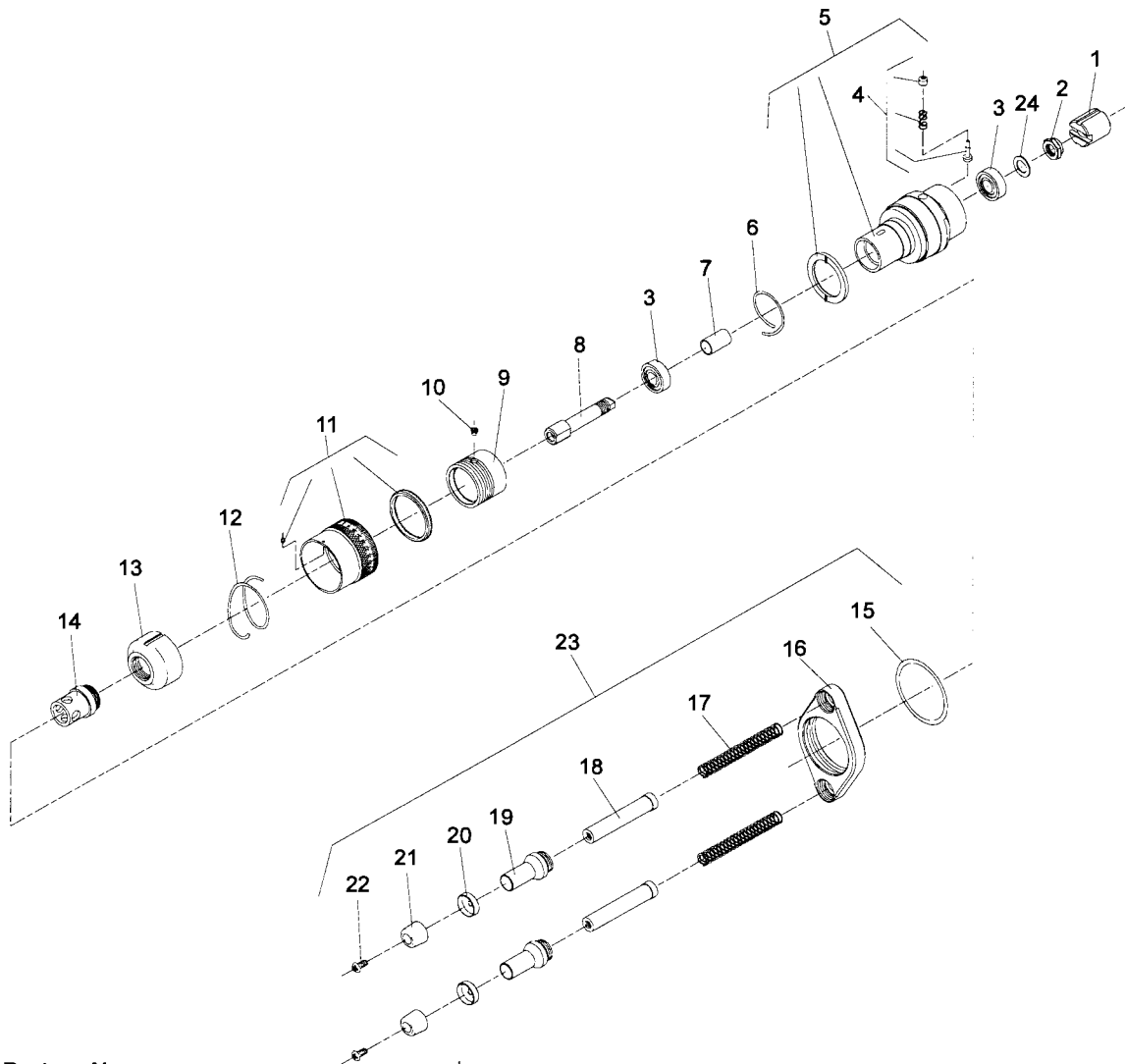


Fig- ure No.	Part No.	Name
1.	65160	Adaptor—Drive
2.	65159	Nut—Elastic Stop
3.	10257	Bearing—Ball (2)*
4.	65174	Ass'y—Lock Pin
5.	65161	Housing
6.	65171	Spring—Compression
7.	65167	Spacer
8.	65170	Shaft—Driver
9.	65162	Slide—Nosepiece
10.	65169	Screw—Set
11.	65163	Ring—Adjustment
12.	65172	Spring—Compression
13.	65164	Nosepiece

Fig- ure No.	Part No.	Name
14.	2925-5	Skirt (5/16 Dia. Cutter)
	2925-6	Skirt (3/8 Dia. Cutter)
	2925-7	Skirt (7/16 Dia. Cutter)
	2925-8	Skirt (1/2 Dia. Cutter)
	2925-9	Skirt (9/16 Dia. Cutter)
	2925-10	Skirt (5/8 Dia. Cutter)
15.	65183	Ring—"O"
16.	65185	Frame
17.	21366	Spring—Lifting (2)*
18.	65187	Adaptor—Stabilizer Foot (2)*
19.	65186	Housing—Stabilizer Foot (2)*
20.	65392	Cap—Foot (2)*
21.	65188	Foot—Stabilizer (2)*
22.	06673	Screw (2)*
23.	65182	Ass'y—Stabilizer
24.	25680	Washer

65158 Assembly—Complete (Includes Figs. 2-22 & 24)

*Order Quantity As Needed

SIouxTM
TOOLS INC.

2901 FLOYD BOULEVARD ■ PO BOX 507 ■ SIOUX CITY, IOWA 51102-0507 ■

Printed in U.S.A.

This pdf incorporates the following model numbers:

2P1900RS, 2L1900RS