



NOTE: Parts are no longer available for this tool.

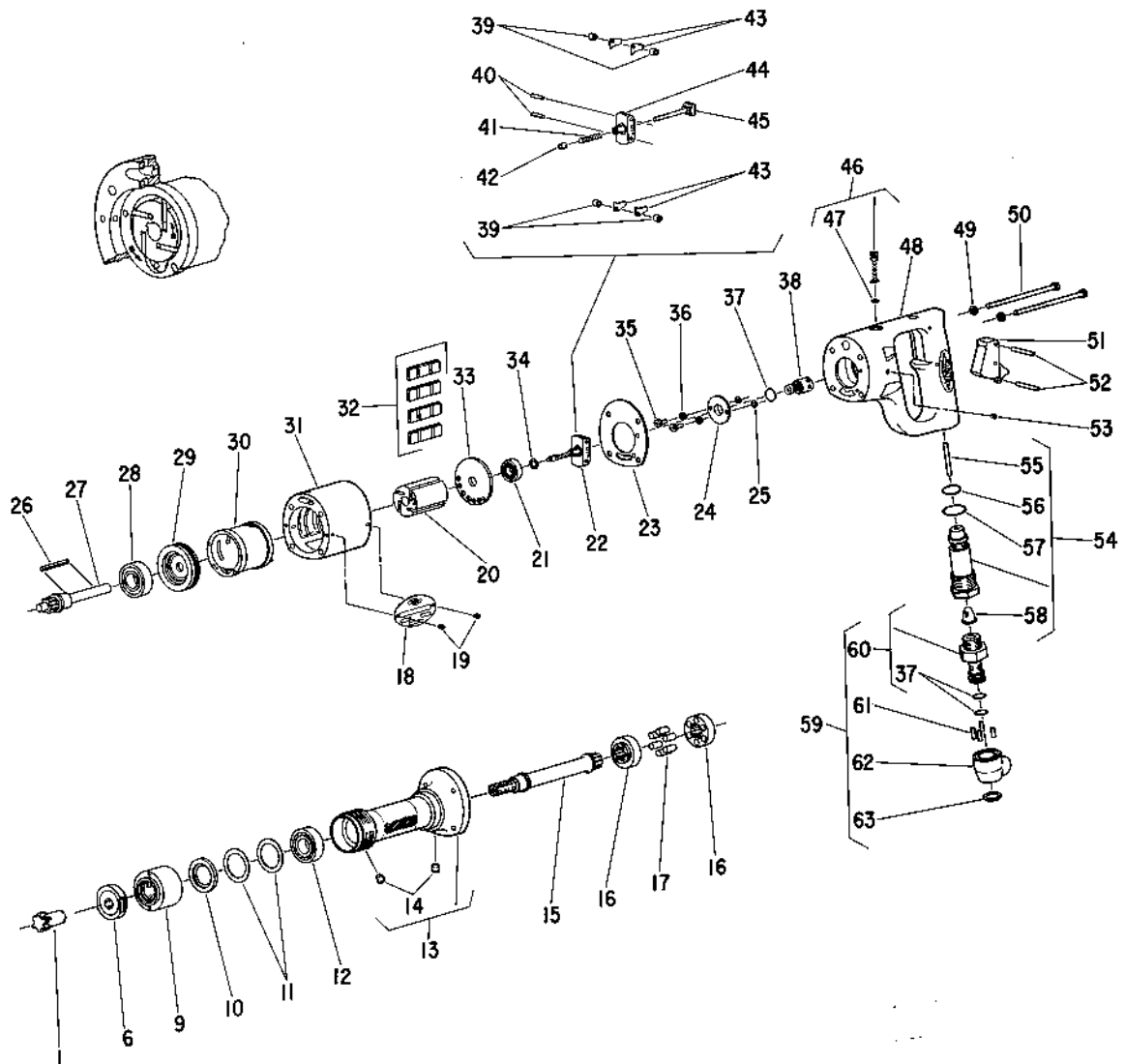
The manual will continue on the next page.

SIoux



TOOLS

Parts List for No. 1784 VALVE SEAT AIR DRIVER



Furnish Catalog and Serial Number When Ordering Parts



**Parts List For No. 1784
VALVE SEAT AIR DRIVER**

Furnish Catalog and Serial Number When Ordering Parts

Fig- ure	Part No.	Name	Fig- ure	Part No.	Name
1	65221	Spindle-Drive	36	09704	Washer—Lock (2)
6	54117	Flange—Inside	37	14312	Ring—“O” 1/16” x 7/16” x 9/16” (3)
9	54114	Cap	38	43664	Assy.—Gov. Valve
10	54115	Spacer	39	44218	Spacer—Gov. Weight (4)
11	35275	Washer—Wave (2)	40	30336	Pin—Roll 3/32” x 5/8” (2)
12	10254	Bearing—Ball	41	21416	Spring—Gov. (Green)
13	53108	Assy.—Spindle Support	42	13183	Nut—Gov. Adjusting
14	30356	Fitting—Grease (2)	43	35069	Weight—Gov. (6)
15	22638	Spindle—Tool	44	44222	Frame—Gov.
16	44460	Coupling (2)	45	43666	Assy.—Brg. Support & Spindle
17	14033	Pin—Drive (6)	46	44253	Oiler Screw & “O” Ring
18	65225	Plate—Name	47	14369	Ring—“O” 1/16” x 5/32” x 9/32”
19	06000	Screw—Phil Pan Hd 2-56 x 1/8 (2)	48	43073	Assy.—Handle (Incl. Fig. 46, 51, 52 & 53)
20	44220	Rotor	49	09724	Washer—Lock (4)
21	10241	Bearing—Ball	50	07129	Screw—Phil Fill Hd. 10-24 x 3/4” (4)
22	43670	Assy.—Gov.	51	33967	Assy.—Trigger
23	14751	Gasket	52	30347	Pin (2)
24	44245	Retainer—Gov. Valve	53	30375	Fitting—Grease
25	14750	Retainer—Screw (2)	54	33998	Assy.—Throttle Valve
26	44219	Key—Rotor	55	30424	Pin
27	22636	Spindle—Rotor	56	14274	Ring—“O” 3/32” x 9/16” x 3/4”
28	10243	Bearing—Ball	57	14307	Ring—“O” 3/32” x 3/4” x 15/16”
29	10531	End Plate—Front	58	33993	Assy.—Air Screen
30	43022	Assy.—Cylinder & Pin	59	43133	Assy.—Swivel
31	12276	Housing	60	43334	Assy.—Swivel Body
32	33997	Vane—Rotor (set of 4)	61	34819	Pin (4)
33	10520	End Plate—Rear	62	13201	Swivel
34	35067	Washer—Wave	63	21523	Ring—Retaining
35	06325	Screw—Phil Pan Hd 6-32 x 5/16 (2)			

This pdf incorporates the following model numbers:

1784