



**NOTE: Parts are no longer available for this tool.**

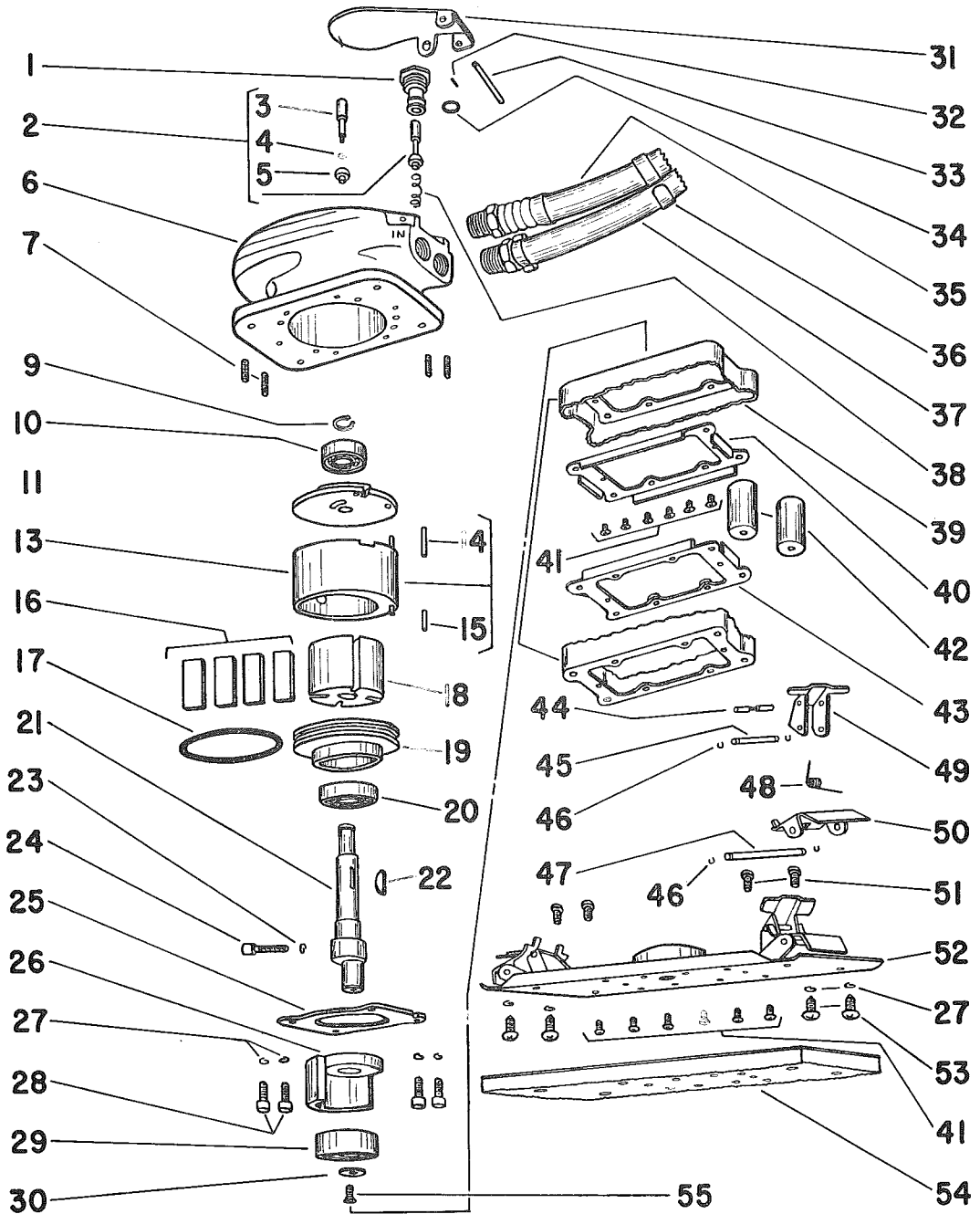
**The manual will continue on the next page.**

# SIoux



# TOOLS

## Parts List for No. 501 Sioux AIR ORBITAL FLAT SANDER



Furnish Catalog, Serial and Model Number When Ordering Parts

**SIoux****TOOLS**

Parts List for No. 501 Sioux  
AIR ORBITAL FLAT SANDER

Furnish Catalog, Serial and Model Number When Ordering Parts

Fig- ure	Part No.	Name	Fig- ure	Part No.	Name
1	13154	Valve—Plunger Guide	29	10225	Bearing—Ball (Up to Serial 7999)
2	33557	Ass'm.—Valve		10210	Bearing—Ball (Serial 8000 & up)
3	34900	Plunger—Valve	30	34970	Washer (Serial 8000 & up)
4	25957	Washer		21500	Ring—Retainer (Up to Serial 7999)
* 5	14350	Valve—Rubber	31	25973	Lever—Valve
6	12242	Housing	32	30318	Pin—Roll
7	07176	Screw—#10 (4)	33	30383	Pin—Roll
9	21470	Ring—Retainer	* 34	14311	Ring—"O"
10	10108	Bearing—Ball	35	33562	Hose—Exhaust
11	11362	Plate—Upper End	36	30275	Clip—Hose (7)
13	33596	Cylinder	37	33375	Hose—Leader
14	30324	Pin—Roll	38	21372	Spring—Throttle Valve
15	30235	Pin—Roll	39	14332	Boot—Rubber
* 16	33597	Vane—Rotor (Set of 4)	40	25968	Plate—Boot Retainer
* 17	14339	Ring—"O"	41	06240	Screw—#6 (12)
18	34896	Rotor	* 42	43682	Mounting—Flexible (set of 4)
19	33598	Plate—Lower End	43	33558	Plate—Boot Retainer
20	10226	Bearing—Ball	44	34893	Rod—Clamp Lock (2)
21	33710	Kit—Modification (Up to Serial 8999)	45	34892	Rod—Short Pivot (2)
	44044	Spindle—Rotor (Serial 9000 & up)	46	21499	Ring—Retainer (8)
22	30001	Key—Woodruff	47	34894	Rod—Long Pivot (2)
23	09704	Washer—Lock #6 (Up to Serial 8999)	48	21378	Spring—Clamp (2)
	09724	Washer—Lock #6 (Serial 9000 & up)	49	25970	Clamp—Lever (2)
24	06255	Screw—#6 (Up to Serial 8999)	50	25969	Clamp (2)
	07093	Screw—#10 (Serial 9000 & up)	51	07203	Screw—#10 (4)
25	25974	Plate—Motor Retainer	52	33710	Kit—Modification (Up to Serial 7999)
26	33710	Kit—Modification (Up to Serial 8999)		43205	Ass'm.—Sole Plate & Clamp (Serial 8000 & up)
	11371	Counterweight (Serial 9000 & up)	53	07208	Screw—#10 (4)
27	09724	Washer—Lock #10 (8)	54	33559	Pad—Rubber
28	07095	Screw—#10 (4)	55	07169	Screw—#10 (Ser. 8000 & up)
				20276	Plate—Name
				09954	Screw—Drive (2)

\*These parts included in Tune-Up Set No. 43906

**SIoux TOOLS INC.**

SIoux CITY, IOWA, U.S.A. 51102

This pdf incorporates the following model numbers:

501