



NOTE: Parts are no longer available for this tool.

The manual will continue on the next page.



PARTS LIST

1446HP AIR SHEAR

(SERIAL "A")

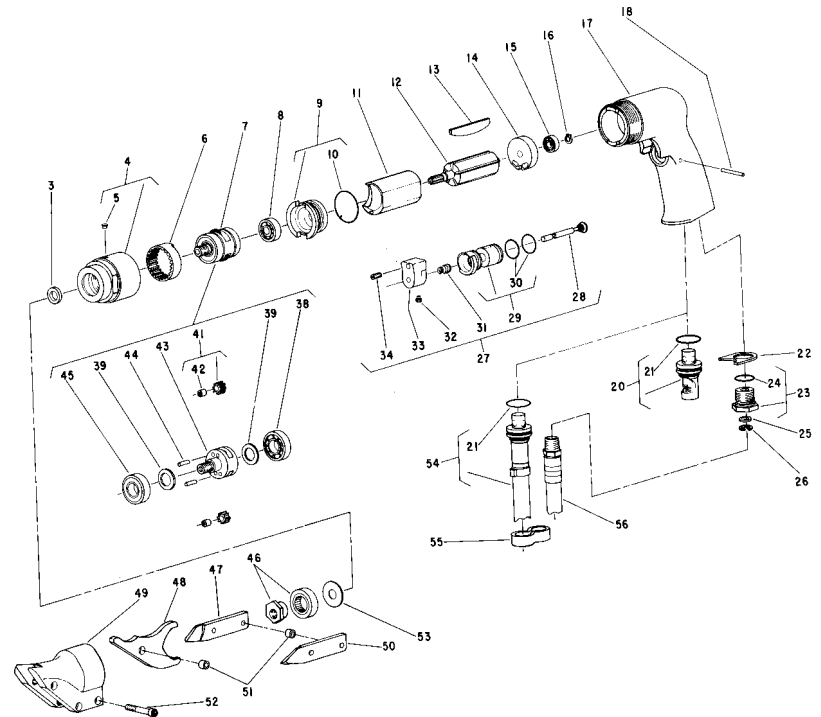


Fig- ure	Part No.	Name	Fig- ure	Part No.	Name
3	44122	Spacer (For 1/4" Chucks)	27	63359	Assy.—Trigger (Non-Rev.)
4	64082	Case—Gear	28	54222	Valve
5	30375	Fitting—Grease	29	11600	Body—Valve (Non-Rev.)
6	19265	Gear—Ring	30	14378	Ring—"O" (2)*
7	63390	Assy.—Planetary Reduction	31	21401	Spring
8	10220	Bearing—Ball	32	06458	Screw—Set (#8-32x3/16")
9	13550	End Plate—Front	33	12676	Trigger
10	14342	Ring—"O"	34	06459	Screw—Set(#8-32x1/2")
11	64057	Cylinder	38	10203	Bearing—Ball
12	54860	Rotor	39	25439	Washer (2)*
13	63192	Assy.—Rotor Vane (Set of 5)	41	19317	Assy.—Gear & Brg. (2)*
14	10552	End Plate—Upper	42	10040	Bearing—Needle (2)*
15	10230	Bearing—Ball	43	22703	Gear—Carrier
16	21491	Ring—Retaining	44	30062	Pin (2)*
17	12660	Housing (Incl's Name Plate)	45	10228	Bearing—Ball
	63361	Assy.—Housing Complete (Incl's. Fig's. 18 thru 27)	46	53614	Assy.—Eccentric
18	40157	Pin—Dowel (1/8" x 1 1/8")	47	54501	Knife—Side (Right)
20	63545	Assy.—Silencer	48	54499	Blade—Center
21	14366	Ring—"O"	49	12598	Housing—Shear
22	54968	Retainer—Exhaust	50	54500	Knife—Side (Left)
23	54955	Adapter—Inlet	51	54502	Bushing—Spacer (2)*
24	14281	Ring—"O"	52	07102	Screw—Socket Hd. Cap (3)*
25	30463	Screen	53	35308	Washer/
26	21541	Ring—Retaining	54	63546	Assy.—Exhaust Tube
			55	40153	Clip—Hose (3)*
			56	1376	Assy.—Leader Hose
				53609	Assy.—Shear Head (Incl's. Figs. 46-53)

Items Not Shown
65359 Name Plate
09953 Drive Screw (2 x 3/16) (2)*

*Order Quantity As Needed

SIoux TOOLS INC.

2901 FLOYD BOULEVARD ■ SIOUX CITY, IOWA 51102 ■



INSTRUCTIONS 1446HP AIR SHEAR

AIR SUPPLY

The efficiency and life of this tool depends on the proper supply of clean, dry, lubricated air at about 90 lbs. P.S.I., although higher or lower pressures may be used. The use of an air line filter, pressure regulator and lubricator is recommended.

Before connecting the tool, blow the air line to remove water and dirt which may have accumulated. This is especially important for a new line or when the line has not been used for some time.

HOSE AND HOSE CONNECTION

The air supply hose is 3/8" I.D. If extension hose is necessary, use 1/2" hose, with couplings not less than 3/8" I.D.

LUBRICATION

An oil supply to the air motor is important. SIOUX air line lubricators are recommended. Adjust to deliver 2 drops of SIOUX Air Motor Oil No. 288 per minute. When air line lubricator is not used squirt several drops of oil into the air inlet before using. Gear case and Shear head must be lubricated after every 40 hrs. of operation, with SIOUX Grease No. 289.

SAFETY

1. Keep work area clean.
2. Do not force tool.
3. Secure work where possible — use clamps or vise.
4. Keep tools sharp and in good shape.
5. Disconnect tools when not in use.
6. The use of accessories not provided or specified may be hazardous.
7. Use goggles or safety glasses.

WARNING

Designed to cut only up to 16 gauge steel, plastic and associated materials up to 3/32" thick. Failure to grease could void warranty. Sioux Tools cannot assume responsibility for damage to or malfunction of a shear head used in combination with any drill other than those regularly supplied by Sioux Tools.

SHEAR HEAD MAINTENANCE INSTRUCTIONS

ADJUSTMENT

To adjust the curl of waste material, the left side knife 54500 has elongated holes. Adjustment may be necessary after changing blades or material being cut. Loosen cap screws 07102 and tap side knife 54500 either forward or backward so that curl of waste does not hit shear housing 12598 of work material while cutting.

DISASSEMBLY

To remove 53609 shear head from power unit and dismantle:

1. Loosen both rear cap screws 07102 three complete turns.
2. Remove shear head assembly 53609 from motor by pulling head firmly forward. Slight twisting action may be required.
3. Remove three cap screws 07102 completely from shear housing 12598. Be careful not to lose rear spacer bushing 54502 when removing rear cap screw.
4. Remove center blade 54499 from shear housing 12598 by tapping blade gently rearward. Be careful not to lose spacer bushing 54502 from hole in center blade.
5. Side Knives 54500 and 54501 will now drop out of shear housing.

ASSEMBLY

To assemble 53609 shear head and adapt to power unit:

1. Place the left side knife 54500 into position in the shear housing.
2. Insert center cap screw 07102 through housing and blade just far enough to slip spacer bushing 54502 over cap screw.
3. Place right side knife 54501 into position and push center cap screw through right side knife. Start cap screw into insert just enough to hold blades in place.
DO NOT TIGHTEN.
4. Insert spacer bushing 54502 into hole in center blade 54499 and lubricate with a good grade of bearing grease.
5. Install center blade 54499 into shear housing 12598 by tapping blade gently forward using a drift to line up hole in center blade with forward holes in housing.
6. Insert and tighten forward cap screw 07102 making sure spacer bushing 54502 in center blade stays in position. Apply good grade of bearing grease to clevis in center blade. **WHEN SHEAR HEAD IS PROPERLY ASSEMBLED THE CENTER BLADE WILL PIVOT FREELY IN HEAD.**
7. Insert rear cap screw 07102 into shear housing 12598 but do not completely tighten.

To install shear head assembly 53609 onto power unit:

1. Make sure rear cap screw and center cap screw 07102 are loosened three complete turns.
2. Place shear head onto unit and tighten cap screws 07102 snugly to lock head assembly in place. It may be necessary to gently tap the shear head assembly into place if it does not readily slip onto the power unit.

This pdf incorporates the following model numbers:

1446HP