



NOTE: Parts are no longer available for this tool.

The manual will continue on the next page.



2901 FLOYD BOULEVARD ■ SIOUX CITY, IOWA 51102 ■

Parts List for No. 270

SIOUX SLUGGER

(Serial No's. Starting with "B" and "C")

Furnish Catalog and Serial Number When Ordering Parts

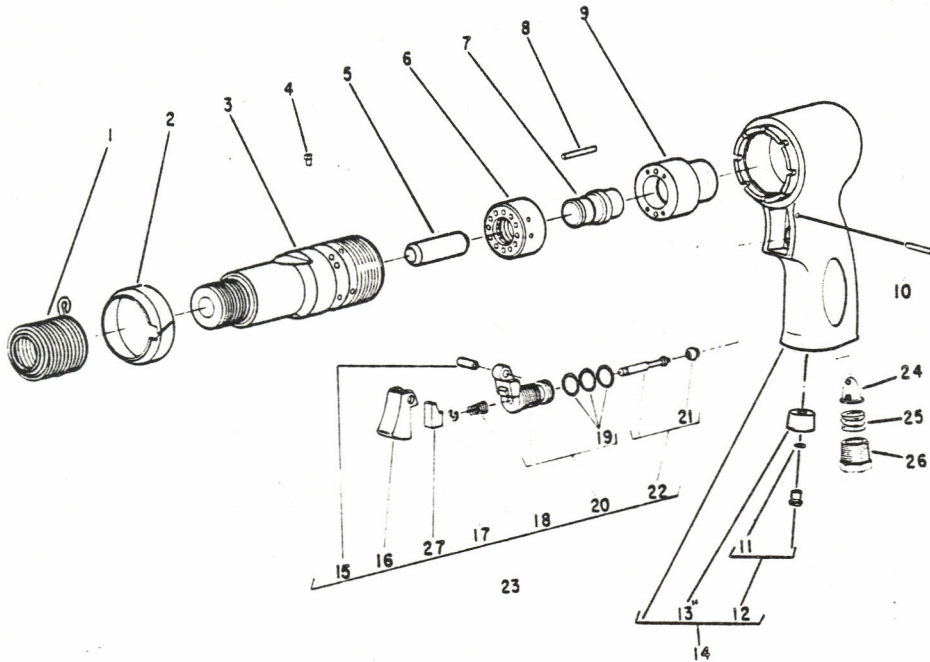


Figure	Part No.	Name
1	2207	Spring
2	30385	Deflector—Exhaust
3	30384	Barrel
4	30391	Pin—Barrel Lock
5	30386	Plunger
6	30387	Cylinder—Front Air
7	30389	Sleeve—Cylinder
8	30347	Pin—Cylinder Lock
9	30388	Cylinder—Back Air
10	30613	Pin
11	14369	Ring—"O"
12	44253	Oiler Screw
13	44755	Insert—Oiler
14	53740	Handle (Malleable Iron)
	63158	Handle (Aluminum) Incl's Fig's. 10 thru 27
	35116	Washer (Use with Aluminum Handle)

Figure	Part No.	Name
15	44754	Bushing
16	53182	Trigger (Ser. "B")
	14180	Trigger (Ser. "C")
17	21542	Retainer (Ser. "B")
18	21401	Spring
19	14312	Ring—"O" (3)
20	53258	Ass'y.—Valve Body & "O" Rings (Ser. "B")
	63157	Ass'y.—Valve Body & "O" (Ser. "C")
21	14325	Valve
22	53246	Ass'y.—Valve (Ser. "B")
	63156	Ass'y.—Valve (Ser. "C")
23	53245	Ass'y.—Adj. Throttle Valve (Ser. "B")
	63123	Ass'y.—Adj. Teasing Throttle Valve (Ser. "C")
24	33993	Screen—Air
25	21417	Spring
26	44100	Bushing—Reducing
27	14181	Actuator—Valve (Ser. "C")

* Order Quantity As Needed

This pdf incorporates the following model numbers:

270