



NOTE: Parts are no longer available for this tool.

The manual will continue on the next page.



INSTRUCTIONS & PARTS LIST FOR 1736 AIR DRIVER

AIR SUPPLY

The efficiency and life of this tool depend on the proper supply of clean, dry, lubricated air at about 90 lbs. P.S.I., although higher or lower pressures may be used. The use of an air line filter, pressure regulator and lubricator is recommended.

Before connecting the tool, blow the air line to remove water and dirt which may have accumulated. This is especially important for a new line or when the line has not been used for some time.

HOSE AND HOSE CONNECTION

The air supply hose is 3/8" I.D. If extension hose is necessary, use 1/2" hose, with couplings not less than 3/8" I.D.

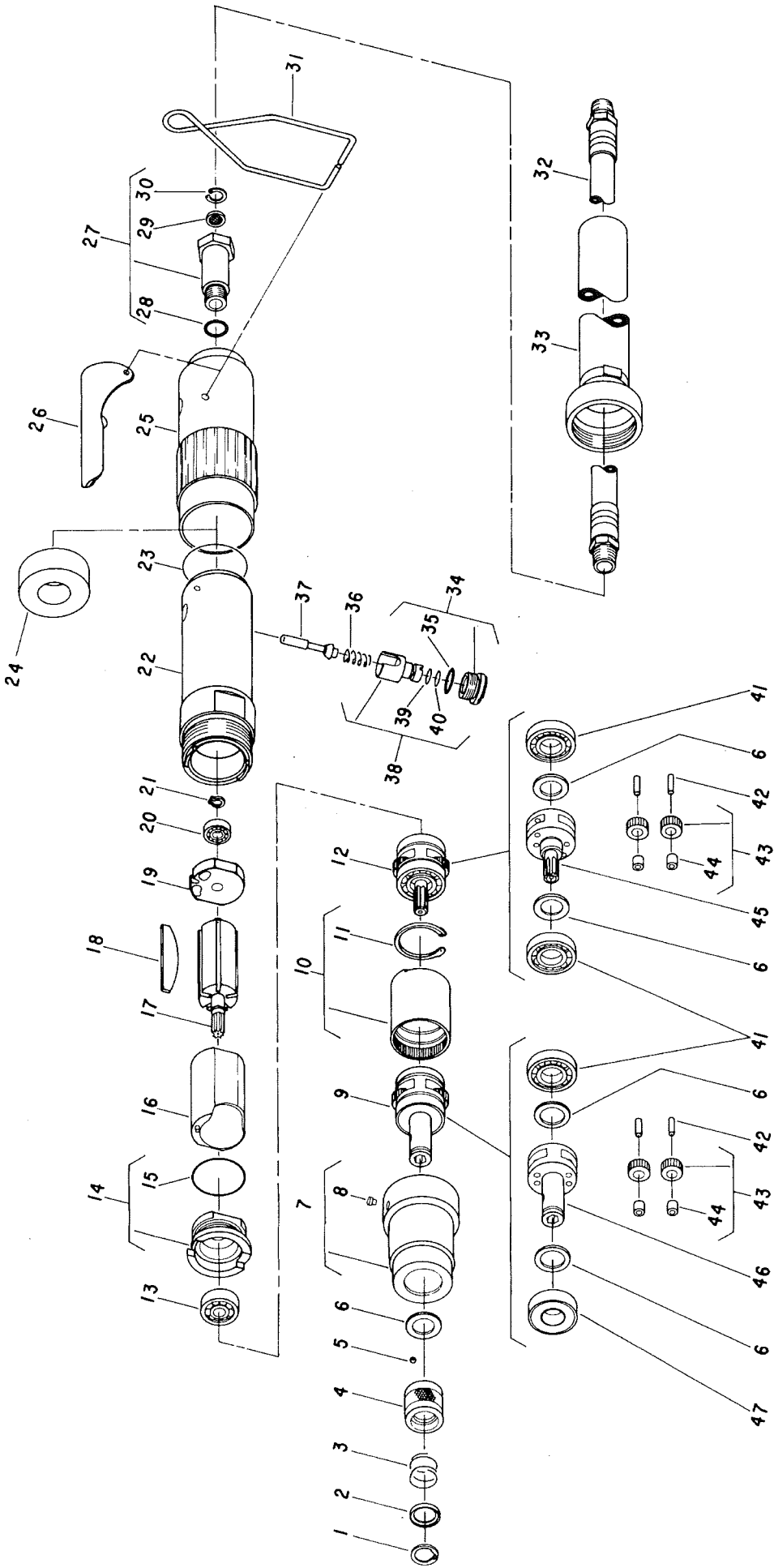
LUBRICATION

An oil supply to the air motor is important. SIOUX air line lubricators are recommended. Adjust to deliver 2 drops of SIOUX Air Motor Oil No. 288 per minute. When air line lubricator is not used, place 10-15 drops of SIOUX No. 288 oil into the air inlet twice daily.

OPERATION

The air motor is started by depressing the operating lever. Motor speed may be controlled by adjusting the slotted head control which is located on the tool housing.

SIOUX™
TOOLS INC.



INSTRUCTIONS & PARTS LIST FOR 1736 AIR DRIVER

Fig. No.	Part No.	Description
1.	21501	Ring—Retaining
2.	44660	Ring—Guide
3.	21406	Spring
4.	44161	Retainer—Ball
5.	10902	Ball—Steel
6.	25439	Washer (5)*
7.	64003	Case—Gear
8.	30375	Fitting—Grease
9.	63380	Ass'y—Planetary Reduction (Includes Figs. 1-6)
10.	19266	Gear—Ring
11.	21510	Ring—Retaining
12.	63386	Ass'y—Planetary Reduction
13.	10220	Bearing—Ball
14.	13550	End Plate—Front
15.	14342	Ring—"O"
16.	64057	Cylinder
17.	54861	Rotor
18.	63192	Ass'y—Rotor Vane (Set of 5)
19.	10552	End Plate—Rear
20.	10230	Bearing—Ball
21.	21491	Ring—Retaining
22.	64036	Housing
23.	14333	Ring—"O"
24.	40116	Material—Exhaust
25.	04042	Cover—Housing
26.	35737	Lever
27.	54837	Adapter—Intake
28.	14312	Ring—"O"
29.	30463	Screen

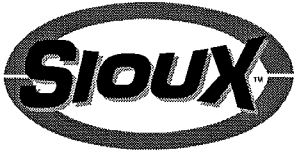
Fig. No.	Part No.	Description
30.	21541	Ring—Retaining
31.	41334	Bail
32.	1317	Hose—Leader
33.	63355	Ass'y—Hose Exhaust
34.	54844	Retainer—Speed Control
35.	14309	Ring—"O"
36.	21427	Spring
37.	63241	Ass'y—Valve
38.	54843	Speed—Control
39.	14394	Ring—"O"
40.	14291	Ring—"O"
41.	10203	Bearing—Ball (3)*
42.	30062	Pin (4)*
43.	19314	Ass'y—Gear & Bearing (4)*
44.	10040	Bearing—Needle (4)*
45.	22697	Carrier—Gear
46.	22698	Carrier—Gear
47.	10228	Bearing—Ball

COMPLETE ASSEMBLIES

2355	Ass'y—Dead Handle (Not Shown)
63444	Ass'y—Housing (Includes Figs.22-31 and 34-40)
63374	Ass'y—Motor (Includes Figs. 13-21)
63470	Ass'y—Gear Case Complete (Includes Figs. 1-12)

*Order Quantity As Required

FURNISH CATALOG, SERIAL, AND MODEL NUMBER
WHEN ORDERING PARTS



GENERAL SAFETY INSTRUCTIONS FOR AIR TOOLS

1. **KEEP WORK AREA CLEAN:** Cluttered areas and benches invite accidents.
2. **AVOID DANGEROUS ENVIRONMENT:** Keep work-area well lit,
3. **KEEP CHILDREN AWAY:** All visitors should be kept safe distance from work area.
4. **STORE IDLE TOOLS:** When not in use, tools should be stored in dry, high or locked-up place-out of reach of children.
5. **DON'T FORCE TOOL:** It will work best and safest at the designed rate.
6. **RIGHT TOOL USE:** Don't force small tool to do the job of a heavy-duty tool.
7. **WEAR PROPER APPAREL:** No loose clothing or jewelry to get caught in moving parts.
8. **USE SAFETY GLASSES:** Use safety glasses with most tools. Also face or dust mask if it is a cutting operation.
9. **SECURE WORK:** Use clamps or vise to hold work. It's safer than using your hand and it allows freedom of both hands to hold tool.
10. **DON'T OVERREACH:** Keep proper footing and balance at all times.
11. **MAINTAIN TOOLS WITH CARE:** Keep tools sharp and clean for best and safest performance. Follow instructions for lubricating and changing accessories.
12. **DISCONNECT TOOLS:** When not in use: before servicing; when changing accessories such as blades, bits, cutter, etc.
13. **REMOVE ADJUSTING KEYS AND WRENCHES:** Form habit of checking to see that keys and adjusting wrenches are removed from tool before turning it on.
14. **CAUTION:** The use of an accessory with this tool not provided or specified by SIOUX TOOLS may be hazardous.

SIOUXTM
TOOLS INC.

2901 FLOYD BOULEVARD ■ PO BOX 507 ■ SIOUX CITY, IOWA 51102-0507 ■

Printed In U.S.A.

This pdf incorporates the following model numbers:

1736