



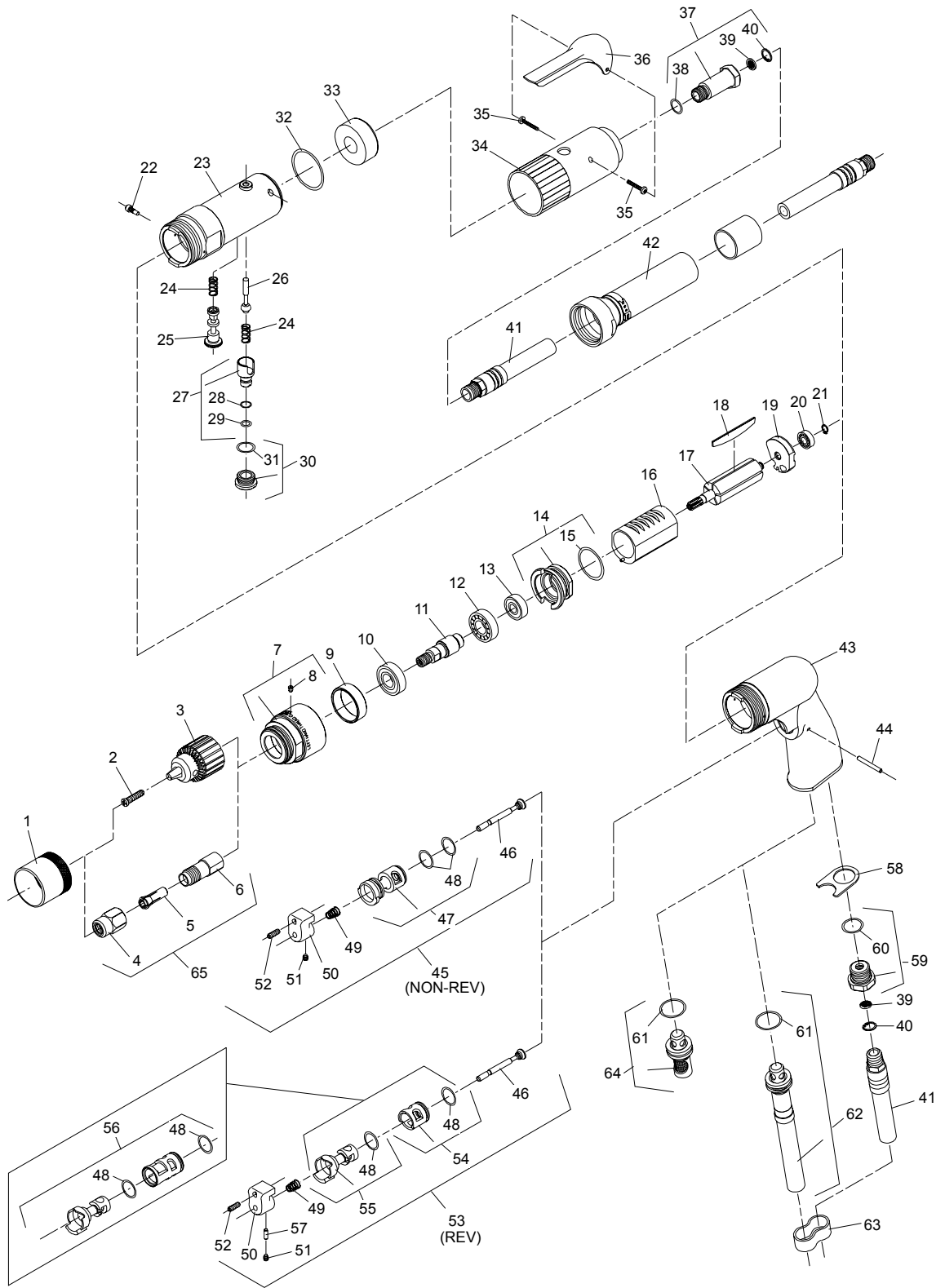
**NOTE: Parts are no longer available for this tool.**

**The manual will continue on the next page.**



# PARTS LIST FOR 2L AND 2P SERIES NO'S. 2L1900, 2L2900, 2P1900, 2P2900 HIGH SPEED AIR GRINDERS AND DRILLS

Form A859  
Date 11-01/B  
Page 1 of 2



# SIoux TOOLS INC.

2901 FLOYD BOULEVARD ■ PO BOX 507 ■ SIOUX CITY, IOWA 51102-0507 USA ■

Printed In U.S.A.



# PARTS LIST FOR 2L AND 2P SERIES NO'S. 2L1900, 2L2900, 2P1900, 2P2900 HIGH SPEED AIR GRINDERS AND DRILLS

Fig. No.	Part No.	Description
1.	34952	Shield—Chuck
2.	57250	Screw (M5 x .8 x 20 L.H.)(1/4" Capacity Chucks)
	57250R	Screw (M5 x .8 x 20 L.H.)(3/8" Capacity Chucks)
3.	21077	Chuck (0-1/4" Capacity)
	30000	Key—Chuck (1/4" Capacity Chucks)
	21133	Chuck (3/8" Capacity)
	30002	Key—Chuck (3/8" Capacity Chucks)
4.	21097	Nut—Collet
	30465	Wrench—9/16"
	30466	Wrench—11/16"
5.	44440	Collet—1/4"
	44523	Collet—3/16"
	45522	Collet—1/8"
6.	21096	Body—Collet
7.	64004	Case—Gear
8.	30375	Fitting—Grease
9.	64044	Spacer
10.	10929	Bearing—Ball
11.	64041	Spindle—Chuck
12.	10239	Bearing—Ball
13.	10220	Bearing—Ball
14.	13550	End Plate-Front
15.	14342	Ring—"O"
16.	64108	Cylinder (2L1900 Serial A, 2L2900 Serial A, 2P1900 Serial A, 2P2900 Serial A)
	64108A	Cylinder (2P1900 Serial B)
17.	54861	Rotor (8-Tooth)
18.	63192	Ass'y—Rotor Vane (Set of 5)
19.	10554	End Plate—Rear (2L1900 Serial A, 2P1900 Serial A)
	10552	End Plate—Rear (2L2900 Serial A, 2P2900 Serial A, 2P1900 Serial B)
20.	10230	Bearing—Ball
21.	21491	Ring—Retaining
22.	06254	Screw—Spool Retaining (Reversing Only)
23.	64035	Housing—Lever (Reversing)
	64036	Housing—Lever (Non Reversing)
24.	21427	Spring
25.	64038	Spool—Valve
	64097	Spool—Locking Valve
		Reversing Only
26.	63241	Ass'y—Valve
27.	54843	Speed—Control
28.	14394	Ring—"O"
29.	14291	Ring—"O"
30.	54844	Retainer—Speed Control
31.	14309	Ring—"O"
32.	14333	Ring—"O"
33.	40116	Material—Exhaust

Fig. No.	Part No.	Description
34.	04041	Cover—Housing (Reversing)
	04042	Cover—Housing (Non Reversing)
35.	65499	Screw—Pan Hd. (Self-Tap)(#6-32x3/4)(2)*
36.	35737	Lever
	63258	Ass'y—Lever w/Lock
37.	54837	Adapter—Intake
38.	14312	Ring—"O"
39.	30463	Screen
40.	21541	Ring—Retaining
41.	1376	Ass'y—Leader Hose
42.	63355	Ass'y—Hose Exhaust Remote Exhaust
43.	12660	Housing—Pistol (Includes Name Plate)
44.	40157	Pin—Dowel (1/8" x 1-1/8")
45.	63359	Ass'y—Trigger (Non Reversing)
46.	54222	Valve
47.	11600	Body—Valve (Non Reversing)
48.	14378	Ring—"O" (2)*
49.	21401	Spring
50.	12676	Trigger
51.	06458	Screw—Set (#8-32 x 3/16")
52.	06459	Screw—Set (Volume Adj.)(#8-32 x 1/2")
53.	63358	Ass'y—Trigger (Reversing)
54.	§	Sleeve—Valve (Reversing)
55.	§	Body—Valve (Reversing)
56.	65227	Valve Sleeve & Body
57.	40155	Pin—Dowel (1/8" x 3/8")(Reversing)
58.	54968	Retainer—Exhaust
59.	54955	Adapter—Inlet
60.	14281	Ring—"O"
61.	14366	Ring—"O"
62.	63546	Ass'y—Exhaust Tube
63.	40153	Clip—Hose (3)*
		Remote Exhaust
64.	63545	Ass'y—Silencer
65.	43340	Complete Collet Chuck (1/4")
	43341	Complete Collet Chuck (3/16")
	43342	Complete Collet Chuck (1/8")

### COMPLETE ASSEMBLY

63443	Ass'y—Lever Housing (Reversing) (Includes Figs. 22-40)
63444	Ass'y—Lever Housing (Non Reversing) (Includes Figs. 23, 24, 26-40)
63360	Ass'y—Pistol Handle (Reversing) (Includes Figs. 39, 40, 43, 44, 53, 58-61, 64)
63361	Ass'y—Pistol Handle (Non Reversing) (Includes Figs. 39, 40, 43-45, 58-61, 64)
63376	Ass'y—Motor (Reversing)(16,000RPM)

\*Order Quantity As Needed

§ Not Available - Order Part No. 65227 (Fig. 56)

FURNISH CATALOG, SERIAL, AND MODEL NUMBER WHEN  
ORDERING PARTS

# SIOUX TOOLS INC.

2901 FLOYD BOULEVARD ■ PO BOX 507 ■ SIOUX CITY, IOWA 51102-0507 USA ■

Printed In U.S.A.

This pdf incorporates the following model numbers:

2L1900, 2L2900, 2P1900, 2P2900