



NOTE: Parts are no longer available for this tool.

The manual will continue on the next page.



INSTRUCTIONS & PARTS LIST FOR 1450HP, 1450HPB, 1451HP, 1452HP, 1453HP, 1454HP, 1455HP, 1455HPB, 1456HP AIR DRILLS (SERIAL B)

AIR SUPPLY

The efficiency and life of this tool depend on the proper supply of clean, dry, lubricated air at about 90 lbs. P.S.I., although higher or lower pressures may be used. The use of an air line filter, pressure regulator and lubricator is recommended.

Before connecting the tool, blow the air line to remove water and dirt which may have accumulated. This is especially important for a new line or when the line has not been used for some time.

HOSE AND HOSE CONNECTION

The air supply hose is 3/8" I.D. If extension hose is necessary, use 1/2" hose, with couplings not less than 3/8" I.D.

LUBRICATION

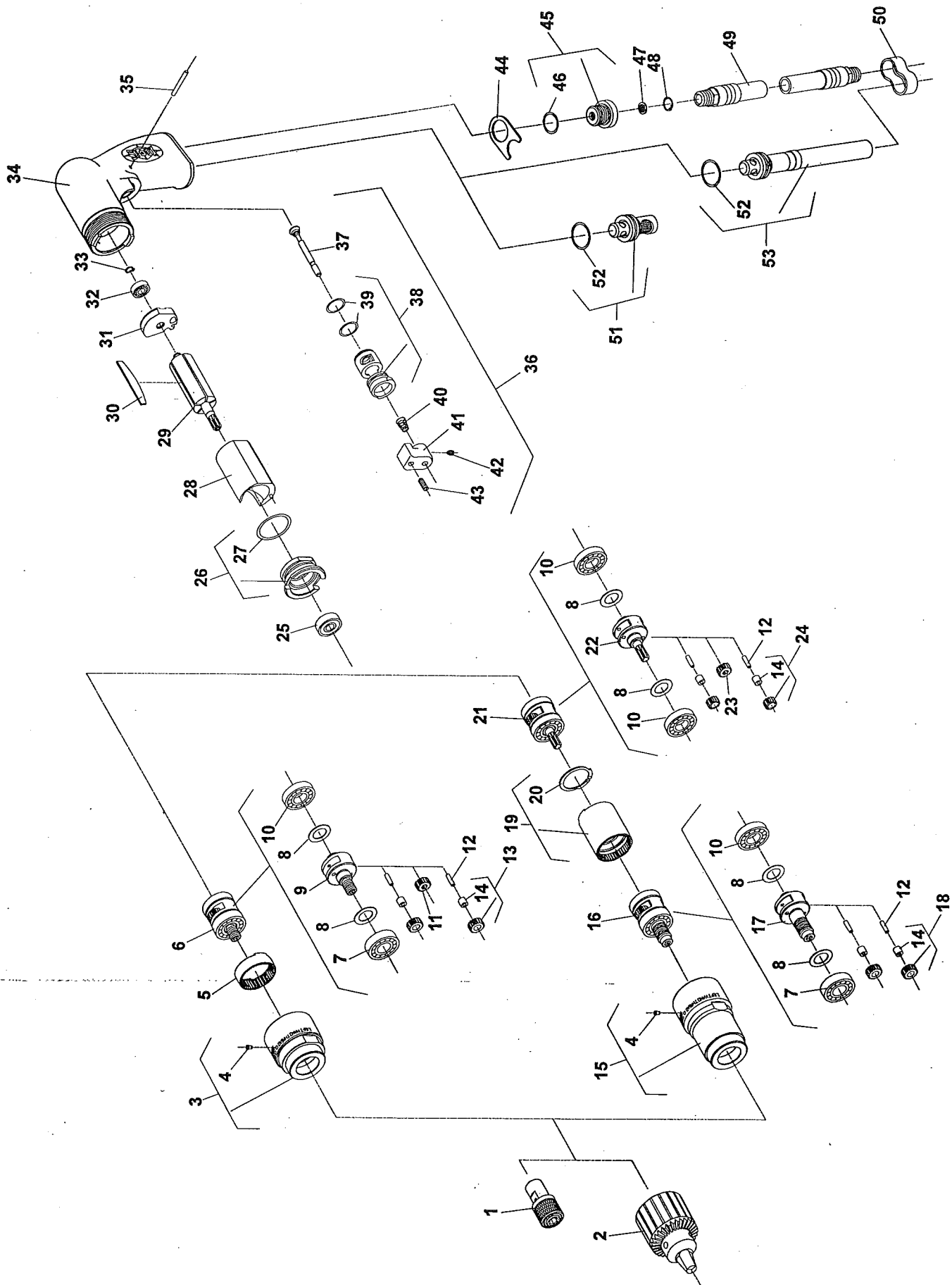
An oil supply to the air motor is important. SIOUX air line lubricators are recommended. Adjust to deliver 2 drops of SIOUX Air Motor Oil No. 288 per minute. When air line lubricator is not used, place 10-15 drops of SIOUX No. 288 oil into the air inlet twice daily.

OPERATION

This tool is equipped with a teasing throttle. By slightly depressing the trigger the chuck will rotate slowly. This is useful for starting a drill bit without first spotting with a punch. By fully depressing the trigger the chuck will rotate at its top speed.

If the gear case is removed or loosened, re-tighten to 35 ft-lb.

SIOUX TOOLS INC.





GENERAL SAFETY INSTRUCTIONS FOR AIR TOOLS

1. **KEEP WORK AREA CLEAN:** Cluttered areas and benches invite accidents.
2. **AVOID DANGEROUS ENVIRONMENT:** Keep work-area well lit,
3. **KEEP CHILDREN AWAY:** All visitors should be kept safe distance from work area.
4. **STORE IDLE TOOLS:** When not in use, tools should be stored in dry, high or locked-up place-out of reach of children.
5. **DON'T FORCE TOOL:** It will work best and safest at the designed rate.
6. **RIGHT TOOL USE:** Don't force small tool to do the job of a heavy-duty tool.
7. **WEAR PROPER APPAREL:** No loose clothing or jewelry to get caught in moving parts.
8. **USE SAFETY GLASSES:** Use safety glasses with most tools. Also face or dust mask if it is a cutting operation.
9. **SECURE WORK:** Use clamps or vise to hold work. It's safer than using your hand and it allows freedom of both hands to hold tool.
10. **DON'T OVERREACH:** Keep proper footing and balance at all times.
11. **MAINTAIN TOOLS WITH CARE:** Keep tools sharp and clean for best and safest performance. Follow instructions for lubricating and changing accessories.
12. **DISCONNECT TOOLS:** When not in use: before servicing; when changing accessories such as blades, bits, cutter, etc.
13. **REMOVE ADJUSTING KEYS AND WRENCHES:** Form habit of checking to see that keys and adjusting wrenches are removed from tool before turning it on.
14. **CAUTION:** The use of an accessory with this tool not provided or specified by SIOUX TOOLS may be hazardous.

SIoux
TOOLS INC.

2901 FLOYD BOULEVARD ■ PO BOX 507 ■ SIOUX CITY, IOWA 51102-0507 ■

Printed In U.S.A.

PARTS LIST FOR 1450HP, 1450HPB, 1451HP, 1452HP, 1453HP, 1454HP, 1455HP, 1455HPB, 1456HP

AIR DRILLS (SERIAL B)

Fig. No.	Part No.	Description
1.	2352	Ass'y—1/4" Hex Quick Change Adapter
2.	21077	Chuck (0-1/4" Cap) (1450HP, 1452HP, 1453HP, 1456HP)
	21133	Chuck (1/16"-3/8" Cap)(1451HP, 1454HP, 1455HP)
	21132	Chuck (5/64"-1/2" Cap)(1450HPB)
	21137	Chuck (5/64"-1/2" Cap)(1455HPB)
	30000	Key—Chuck (For 1/4" Chuck)
	30002	Key—Chuck (For 3/8" Chuck)
	30429	Key—Chuck (For 1/2" Chuck)(1450HPB)
	30011	Key—Chuck (For 1/2" Chuck)(1455HPB)
3.	54974	Case—Gear (1450HP, 1450HPB, 1451HP, 1452HP, 1453HP, 1454HP, 1456HP)
4.	30375	Fitting—Grease
5.	19265	Gear—Ring (1450HP, 1450HPB, 1451HP, 1452HP, 1453HP, 1454HP, 1456HP)
6.	63390	Ass'y—Planetary Reduction (1450HP, 1451HP, 1454HP, 1450HPB)
	63379	Ass'y—Planetary Reduction (1452HP)
	63383	Ass'y—Planetary Reduction (1453HP, 1456HP)
7.	10228	Bearing—Ball
8.	25439	Washer (1450HP, 1450HPB, 1451HP, 1452HP, 1453HP, 1454HP, 1456HP)(2)*(1455HP, 1455HPB)(4)*
9.	22703	Carrier—Gear (1450HP, 1450HPB, 1451HP, 1454HP)
	64163	Carrier—Gear (1452HP)
	64164	Carrier—Gear (1453HP, 1456HP)
10.	10203	Bearing—Ball (1450HP, 1450HPB, 1451HP, 1452HP, 1453HP, 1454HP, 1456HP)(1455HP, 1455HPB)(3)*
11.	19267	Gear—Pinion (1453HP, 1456HP)
12.	30062	Pin (1450HP, 1450HPB, 1451HP, 1452HP, 1453HP, 1454HP, 1456HP)(2)*(1455HP, 1455HPB)(4)*
13.	19314	Ass'y—Gear & Bearing (1452HP)(2)*
	19317	Ass'y—Gear & Bearing (1450HP, 1450HPB, 1451HP, 1454HP)(2)*
	19331	Ass'y—Gear & Bearing (1453HP, 1456HP)(2)*
14.	10040	Bearing—Needle (1450HP, 1450HPB, 1451HP, 1452HP, 1453HP, 1454HP, 1456HP)(2)*(1455HP, 1455HPB)(4)*
15.	64003	Case—Gear (1455HP, 1455HPB)
16.	63379	Ass'y—Planetary Reduction (1455HP—3/8"-24 Thread)
	63436	Ass'y—Planetary Reduction (1455HPB—1/2"-20 Thread)
17.	64163	Carrier—Gear (1455HP—3/8"-24 Thread)
	22704	Carrier—Gear (1455HPB—1/2"-20 Thread)
18.	19314	Ass'y—Gear & Bearing (1455HP, 1455HPB)(2)*
19.	19266	Gear—Ring (1455HP, 1455HPB)
20.	21510	Ring—Retainer (1455HP, 1455HPB)
21.	63377	Ass'y—Planetary Reduction (1455HP, 1455HPB)
22.	64159	Carrier—Gear (1455HP, 1455HPB)

Fig. No.	Part No.	Description
23.	19267	Gear—Pinion (1455HP, 1455HPB)
24.	19331	Ass'y—Gear & Bearing (1455HP, 1455HPB)(2)*
25.	10220	Bearing—Ball
26.	13550	End Plate—Front
27.	14342	Ring—"O"
28.	64057	Cylinder (1450HP, 1450HPB, 1452HP, 1454HP, 1455HP, 1455HPB, 1456HP)
	64108	Cylinder (1451HP, 1453HP)
29.	54860	Rotor—6 Tooth (1450HP, 1450HPB, 1451HP, 1453HP, 1454HP, 1455HP, 1455HPB, 1456HP)
	54861	Rotor—8 Tooth (1452HP)
30.	63192	Ass'y—Rotor Vane (Set of 5)
31.	10552	End Plate—Rear (1450HP, 1450HPB, 1452HP, 1454HP, 1455HP, 1455HPB, 1456HP)
	10554	End Plate—Rear (1451HP, 1453HP)
32.	10230	Bearing—Ball
33.	21491	Ring—Retainer
34.	12660	Housing
35.	40157	Pin—Dowel (1/8" x 1-1/8")
36.	63359	Ass'y—Trigger
37.	54222	Valve
38.	11600	Body—Valve
39.	14378	Ring—"O"
40.	21401	Spring
41.	12676	Trigger
42.	06458	Screw—Set (#8-32 x 3/16")
43.	06459	Screw—Set (#8-32 x 3/16")
44.	54968	Retainer—Exhaust
45.	54955	Adapter—Inlet
46.	14281	Ring—"O"
47.	30463	Screen
48.	21541	Ring—Retainer
49.	1376	Ass'y—Leader Hose
50.	40153	Clip—Hose (3)* Remote Exhaust
51.	63545	Ass'y—Silencer
52.	14366	Ring—"O"
53.	63546	Ass'y—Exhaust Tube

ITEMS NOT SHOWN:

2355 Ass'y—Dead Handle

COMPLETE ASSEMBLY:

63361 Ass'y—Housing (Includes Figs. 34—48, 51)
63373 Ass'y—Motor (1450HP, 1450HPB, 1454HP, 1455HP,
1455HPB, 1456HP)(Includes Figs. 25—33)
63374 Ass'y—Motor (1452HP)(Includes Figs. 25—33)
63455 Ass'y—Motor (1451HP, 1453HP)(Includes Figs. 25—33)

*Order Quantity As Needed

This pdf incorporates the following model numbers:

1450HP, 1450HPB, 1451HP, 1451HP, 1453HP, 1454HP, 1455HP, 1455HPB, 1456HP