

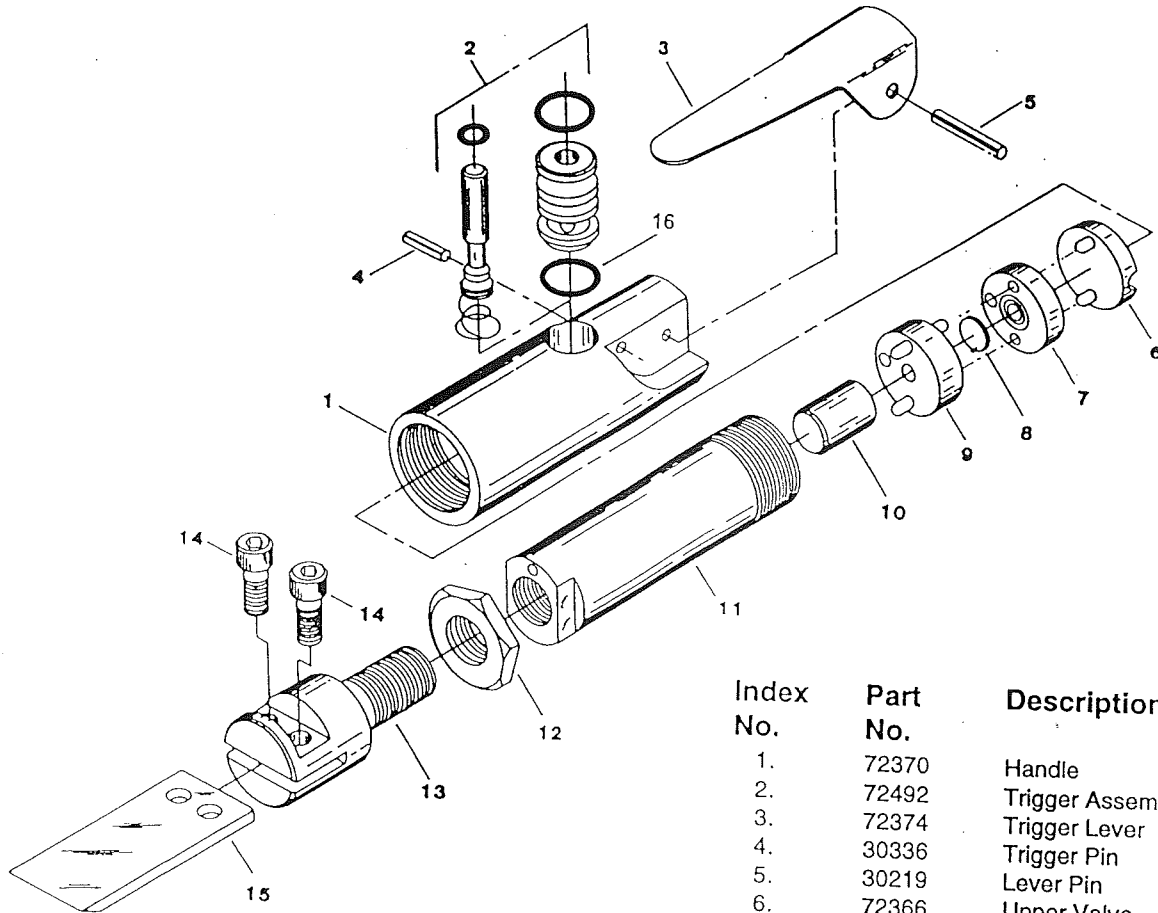


NOTE: Parts are no longer available for this tool.

The manual will continue on the next page.



Parts List for No. 1620 GASKET SCRAPER



Index No.	Part No.	Description
1.	72370	Handle
2.	72492	Trigger Assembly
3.	72374	Trigger Lever
4.	30336	Trigger Pin
5.	30219	Lever Pin
6.	72366	Upper Valve
7.	72367	Middle Valve
8.	72378	Valve Disc
9.	72490	Bottom Valve
10.	72380	Piston
11.	72369	Barrel
12.	72382	Locknut
13.	72383	Blade Holder
14.	08229	Socket Head Cap Screw (2)
15.	1620B	Blade 1"
	1620D	Blade 3" (not shown)
16.	14369	O-Ring
	1335	Valve, Speed Control (not shown)

ORDER QUANTITY AS NEEDED
Furnish Catalog and Date Code When Ordering Parts

SIoux
TOOLS INC.

2901 FLOYD BOULEVARD ■ SIOUX CITY, IOWA 51102 ■

SAFETY INSTRUCTIONS FOR PNEUMATIC GASKET SCRAPER MODEL #1620

1. READ ALL INSTRUCTIONS CAREFULLY before operating your gasket scraper.
2. ALWAYS WEAR EYE PROTECTION. Guard against eye injury caused by flying particles. Caution is the key to safety.
3. PROTECT YOURSELF FROM NOISE. Noise levels vary with work surface. If noise level from scraping is high, wear ear protectors.
4. WEAR GLOVES AND PROTECTIVE CLOTHING to avoid injuries caused by chips or pieces, malfunctioning attachments or improperly clamped work.
5. DISCONNECT TOOL FROM AIR SUPPLY BEFORE CHANGING OR INSPECTING BLADE. Do not perform service work on the tool while connected to an air supply.
6. IF A SUDDEN CHANGE OCCURS in the feel (vibration level) or sound (pitch) of the unit, the tool should be IMMEDIATELY TURNED OFF and inspected for damage. Do not carry the scraper by the hose. Protect the hose from heat and sharp objects.
7. HANDLE THE TOOL SAFELY. Do not carry the tool with a finger on or near the throttle or trigger while the tool is connected to an air supply. Do not carry the scraper by the hose. Protect the hose from heat and sharp objects.
8. WHEN NOT IN USE, DISCONNECT THE TOOL FROM AIR SUPPLY to prevent accidental or unauthorized use in the absence of the operator.
9. KEEP VISITORS AT A SAFE DISTANCE and out of line with the tool's work head and work surface.

AIR SUPPLY AND CONNECTIONS:

The scraper is designed to operate at 90 PSI maximum air pressure at the tool is running. Less pressure prevents the tool from delivering its rated power. Air pressure over 90 PSI at the tool will cause tool to over speed and may result in tool exceeding the accessory strength. The air supply must be water-free; therefore, a drop line or water trap should be used to remove condensation. In addition an air line lubricator is strongly recommended to insure proper operation and long life of motor and valve parts.

OPERATION:

Before starting work, drain water out of air tank and blow condensation from the air line. Blow down compressor more frequently in hot, humid weather. After clearing compressor and lubricating tool, connect to air hose.

Scrapers should be operated at moderate speeds and held at approximately 45° to the work surface.

Keep all blades sharpened for best scraper performance.

CAUTION:

When operating tool to flush out gum and foreign matter, direct the exhaust away from operator and co-workers.

GENERAL MAINTENANCE:

A parts breakdown on the reverse side of this sheet shows all the parts incorporated in the tool. Refer to this sheet when cleaning, inspecting, or when ordering parts becomes necessary.

LOSS OF POWER OR ERRATIC ACTION:

Factors outside the tool may cause loss of power or erratic action. Reduced compressor output, excessive drain on the air line, moisture or restrictions in air pipes or the use of hose or connections of improper size or poor condition may reduce air supply. Grit or gum deposits in the tool may cut power and may be corrected by flushing out the tool with gum solvent oil or an equal mixture of SAE #10 oil and kerosene.

LUBRICATION:

Daily, before using and at the end of each day's use, pour a liberal quality of gum solvent oil into the air inlet. Connect scraper to air line and WITH A BLADE IN THE TOOL AND THE SCRAPER AGAINST A FIRM SUPPORT, operate scraper to allow oil to be carried to the interior and to flush accumulations of gum and dirt out the exhaust.

The use of synthetic oils is not recommended because of possible damage to seals, "O" rings, hose and polycarbonate oiler/filter bowls.

Before storing scraper, lubricate liberally as described above in order to coat valve and cylinder with oil and to help prevent rust and corrosion.

OPERATION SPECIFICATIONS:

Standard Operating Pressure	90 PSIG
Air Consumption	4.5 CFM (31.5SCFM)
Air Inlet Thread Size	1/4" NPT
Recommended Hose Size	3/8"

This pdf incorporates the following model numbers:

1620 Gasket Scraper