



NOTE: Parts are no longer available for this tool.

The manual will continue on the next page.



Parts List for 1267DI Electric Sander (4500 RPM) Serial "D"

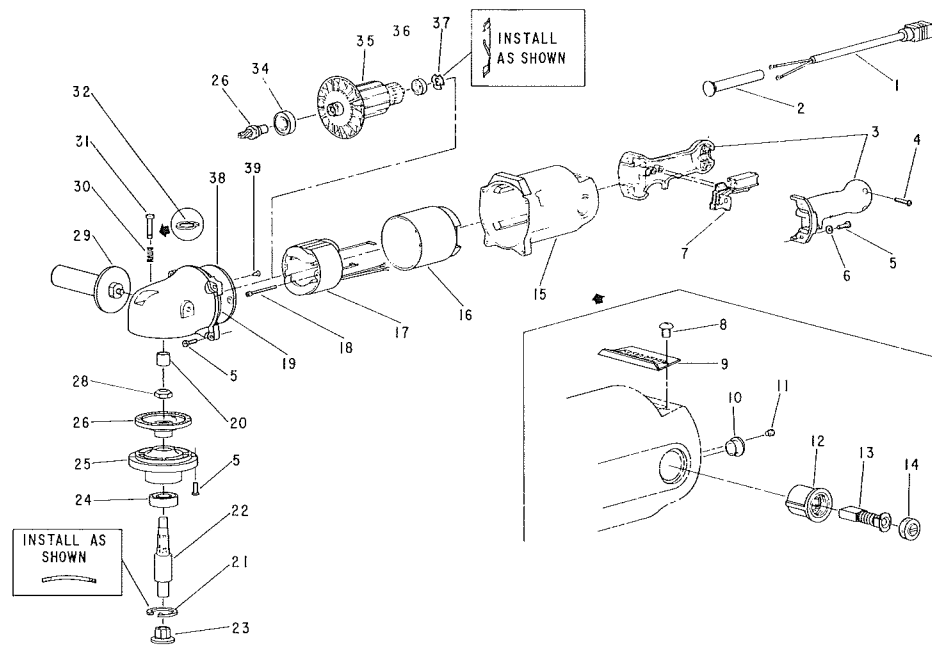


Fig ure	Part No.	Name	Fig ure	Part No.	Name
1	18442	Cord w/Terminals	20	10023	Bearing—Needle
2	04303	Relief—Strain	21	21819	Ring—Retaining (Bowed)
3	53786	Assy.—Handle	22	64183	Spindle—Tool (Incl's. Fig. 28)
4	06657	Screw—Phil. Pan Hd. (#8-32x1 1/8) (3)*	23	524	Nut—Lock
5	07248	Screw—Torx Pan Hd. (#10-32x3/4) (12)*	24	10244	Bearing Ball
6	35234	Washer (4)*	25	12675	Support—Bearing & Bearing Assy. (Incl's. Fig's. 24 & 22)
7	18235	Switch	26	19740	Assy.—Spiral Bevel Gear & Pinion
8	06662	Screw—Pan Hd. (3-32x1/4) (2)*	28	09693	Nut—Lock (Torque to 55 ft. Lbs. Min)
9	35830	Cover—Inspection Hole	21820	Ring—Retaining (Not Shown—Used on Older Models)	
10	04016	Bushing—Lead Insulating	41331	Washer—Spring (Curved) (Not Shown—Used on Older Models)	
11	07000	Screw—Soc. Hd. Cup Pt. Set (2)* (Torque to 9-10 in. lbs.)	29	63349	Assy.—Side Handle
12	63421	Assy.—Brush Holder W/Insulating Sleeve (2)*	30	41332	Spring
13	18031	Brush (Set of 2)	31	54991	Pin—Spindle Lock
14	18120	Cap—Brush Holder (2)*	32	21491	Ring—Retaining
15	12674	Housing [Incl's. Fig's. 10, 11 (2), 12 (2), 5 (8), 8 (2)]	34	10290	Bearing—Ball
16	04027	Sleeve—Field Insulating	35	28937	Armature
17	28887	Field (Incl's. 14733 (2))	28649	Armature W/Bearings	
18	06610	Screw—Field (#8-32x2 1/2) (2)*	04321	Fan	
	14733	Washer (2)*	36	10931	Bearing—Ball
19	12677	Case—Gear [Incl's. Fig's. 20, 30, 31, 32, & 5 (4)]	37	41333-1	Finger—Spring Washer
			38	35833	Plate
			39	07261	Screw—Flat Hd. (#10-24x1/2) (2)*

Items Not Shown
20822 Plate—Name

*Order Quantity As Needed

SIoux TOOLS INC.

2901 FLOYD BOULEVARD ■ SIOUX CITY, IOWA 51102 ■

PRINTED IN U.S.A.

This pdf incorporates the following model numbers:

1267DI