



**NOTE: Parts are no longer available for this tool.**

**The manual will continue on the next page.**



# Parts List for

## 1200DI Electric Polisher (2000 RPM)

## 1203DI Electric Polisher (3000 RPM)

## 1216DI Electric Polisher (1500 RPM)

### Serial "D"

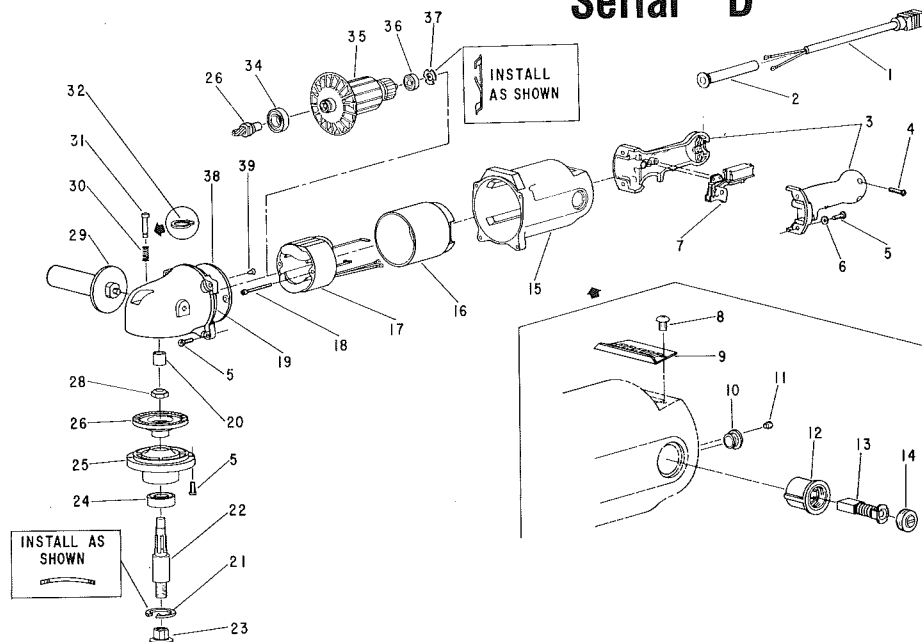


Fig ure	Part No.	Name
1	18442	Cord w/Terminals
2	04303	Relief—Strain
3	53786	Assy.—Handle
4	06657	Screw—Phil. Pan Hd. (#8-32x1 1/8) (3)*
5	07248	Screw—Torx Pan Hd. (#10-32x3/4) (12)*
6	35234	Washer (4)*
7	18235	Switch
8	06662	Screw—Pan Hd. (#8-32x1/4) (2)*
9	35830	Cover—Inspection Hole
10	04016	Bushing—Lead Insulating
11	07000	Screw—Soc. Hd. Cup Pt. Set (2)* (Torque to 9-10 in. lbs.)
12	63421	Assy.—Brush Holder W/Insulating Sleeve (2)*
13	18031	Brush (Set of 2)
14	18120	Cap—Brush Holder (2)*
15	12674	Housing [Incl's. Fig's. 10, 11 (2), 12 (2), 5 (8), 8 (2)]
16	04027	Sleeve—Field Insulating
17	28889	Field (1200DI, 1203DI) [Incl's. 14733 (2), 06610 (2)]
	28886	Field (1216DI) [Incl's. 14733 (2)]
18	06684	Screw—Field (#8-32x2 2-9/32) (2)* (1200DI, 1203DI) (Older Models with Shorter Fields)
	06610	Screw—Field (#8-32x2-1/2) (2)*
	14733	Washer (2)*
19	12677	Case—Gear [Incl's. Fig's. 20, 30, 31, 32, & 5 (4)]

Fig ure	Part No.	Name
20	10023	Bearing—Needle
21	21819	Ring—Retaining (Bowed)
22	64183	Spindle—Tool (Incl's. Fig. 28)
23	524	Nut—Lock
24	10244	Bearing Ball
25	12675	Support—Bearing & Bearing Assy. (Incl's. Fig's. 24 & 22)
26	19739	Assy.—Spiral Bevel Gear & Pinion (1200) (1216DI)
	19740	Assy.—Spiral Bevel Gear & Pinion (1203)
28	09693	Nut—Lock (Torque to 55 Ft. Lbs. Min)
	21820	Ring—Retaining (Not Shown—Used on Older Models)
	41331	Washer—Spring (Curved) (Not Shown—Used on Older Models)
29	63349	Assy.—Side Handle
30	41332	Spring
31	54991	Pin—Spindle Lock
32	21491	Ring—Retaining
34	10290	Bearing—Ball
35	28888	Armature (1200DI, 1203DI)
	28647	Armature W/Bearings (1200DI, 1203DI)
	04321	Fan
	28936	Armature (1216DI)
	28648	Armature W/Bearings (1216DI)
36	10931	Bearing—Ball
37	41333-1	Finger—Spring Washer
38	35833	Plate
39	07261	Screw—Flat Hd. (#10-24x1/2) (2)

\*Order Quantity As Needed

Items Not Shown:  
20820 Plate—Name (1200DI)  
20821 Plate—Name (1203DI)  
20827 Plate—Name (1216DI)

# SIoux TOOLS INC.

2901 FLOYD BOULEVARD ■ SIOUX CITY, IOWA 51102 ■

PRINTED IN U.S.A.

This pdf incorporates the following model numbers:

1200DI, 1203DI, 1216DI