



NOTE: Parts are no longer available for this tool.

The manual will continue on the next page.

SIoux**TOOLS**

Parts List for No. 269 Sioux DEPTH LOCATOR SCREW DRIVER

(Serial Starting With "B" & Up)

Furnish Catalog and Serial Number When Ordering Parts

Fig- ure	Part No.	Name	Fig- ure	Part No.	Name
1	10221	Bearing—Ball	30	21455	Ring—Clinch
2	06516	Screw (2)	32	18644	Cord—Electric (With Terminals)
3	10027	Bearing—Needle (625 & 950 R.P.M.-2) (1600 R.P.M.-1)	33	06362	Screw
4	33413	Gear—2nd Compound Cluster (2500 R.P.M.)	34	18191	Switch
	33410	Gear—2nd Compound Cluster (625 & 1600 R.P.M.)	35	33421	Assy.—Trigger & Lock
	33412	Gear—2nd Compound Cluster (950 R.P.M.)	36	34694	Pin—Trigger Swivel
5	10026	Bearing—Needle	37	06074	Screw
6	22676	Gear—Tool Spindle (2500 R.P.M.)	38	25944	Bracket—Trigger Lock
	22675	Gear—Tool Spindle (625, 950 & 1600 R.P.M.)	39	34693	Pin—Support
7	10013	Bearing—Needle	40	33417	Cover—Gear Case (Incl's. Fig's. 5 & 7)
8	10223	Bearing—Ball	41	10222	Bearing—Ball
9	28546	Armature with Fan (1600 & 2500 R.P.M.)	42	19137	Gear—1st Compound Cluster (625 R.P.M.)
	28545	Armature with Fan (625 & 950 R.P.M.)		19139	Gear—1st Compound Cluster (950 R.P.M.)
	16813	Armature with Fan & Brg's. (1600 & 2500 R.P.M.)	43	34819	Pin
	16812	Armature with Fan & Brg's. (625 & 950 R.P.M.)	44	33416	Case—Gear (1600 & 2500 R.P.M.)
10	10220	Bearing—Ball		33415	Case—Gear (625 & 950 R.P.M.)
11	21223	Spring—Friction	45	06592	Screw (2)
12	14849	Washer—Insulation (2)	46	34855	Ring—Bearing Retainer
13	14824	Pin—Brush Holder (2)	47	54297	Spacer
14	18109	Cap—Brush Holder (2)	48	44662	Jaw—Clutch (2)
15	18009B	Brush (Set of 2)	49	21500	Ring—Retaining (2)
16	18062	Holder—Brush (2)	50	21379	Spring
17	18840	Wire—Lead (9½" Long)	51	10902	Ball—Retainer
18	06573	Screw (6)	52	25854	Ring—Ball Retainer
19	33475	Housing	53	43452	Assy.—Drive Socket
22	06071	Screw (2)	54	14281	Ring—"O"
23	20410	Plate—Name	55	53100	Assy.—Clutch Case & "O" Ring
24	28567	Field	56	54241	Nosepiece—Long Round Locator
25	18839	Wire—Lead (7½" Long)		14109	Cap—End
26	18841	Wire—Lead (3½" Long)	57	54103	Nosepiece—Round Locator
27	18186	Switch—Reversing		14109	Cap—End
28	06224	Screw	58	54104	Nosepiece—Fastener Locator
29	09835	Washer—Lock (2)		14110	Cap—End
			59	53510	Assy.—Straddle Nosepiece
			61	53511	Ass'y.—Depth Locator Base (Use with Figs. 57, 58 or 59)
				53512	Assy.—Depth Locator Base (Use with Fig. 56)
			62	63109	Assy.—Switch
			63	05053	Insulation—Switch

SIoux TOOLS INC.

SIoux CITY, IOWA, U.S.A. 51102

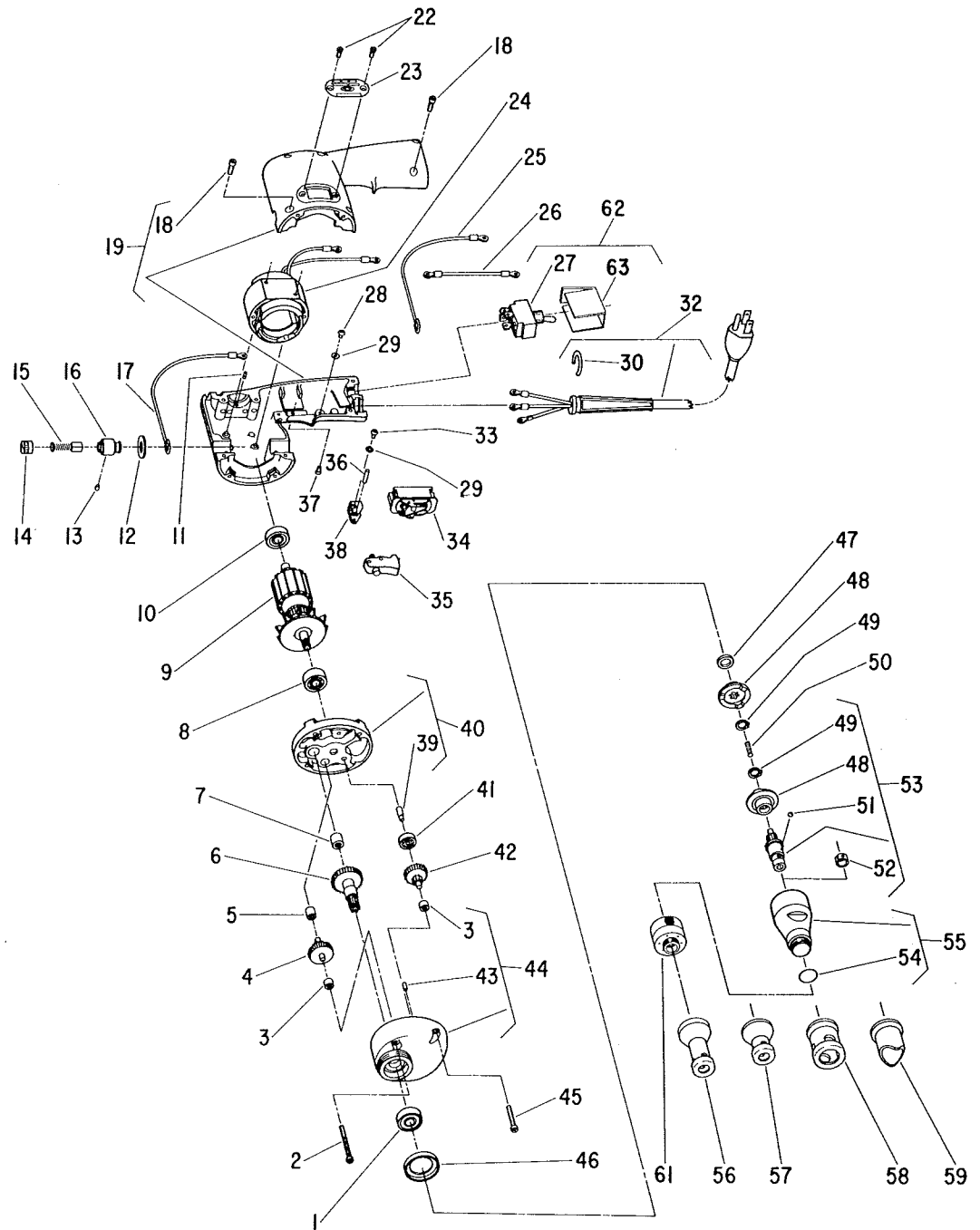
SIoux



TOOLS

Parts List for No. 269 Sioux DEPTH LOCATOR SCREW DRIVER

(Serial Starting With "B" & Up)



Furnish Catalog, Serial and Model Number When Ordering Parts

This pdf incorporates the following model numbers:

269