



NOTE: Parts are no longer available for this tool.

The manual will continue on the next page.

SIoux



TOOLS

Parts List for No. 260 Sioux 1/4" ELECTRIC SCREW DRIVER

(Serial B100 & Up)

& No. 269 Depth Locator Screw Driver

(Up To Ser. Starting With "B")

Furnish Catalog, Serial and Model Number When Ordering Parts

Fig- ure	Part No.	Name	Fig- ure	Part No.	Name
1	10221	Bearing—Ball	33	06362	Screw—#6
2	06516	Screw—#8 (2)*	34	18191	Switch
3	10027	Bearing—Needle (625 & 950 R.P.M.-2) (1600 R.P.M.-1)	35	33421	Ass'm.—Trigger & Lock
4	33410	Gear—2nd Compound Cluster (625 & 1600 R.P.M.)	36	34694	Pin—Trigger Swivel
	33412	Gear—2nd Compound Cluster (950 R.P.M.)	37	06074	Screw—#4
	33413	Gear—2nd Compound Cluster (2500 R.P.M.)	38	25944	Bracket—Trigger Lock
5	10026	Bearing—Needle	39	34693	Pin—Support
6	22599	Gear—Tool Spindle	40	33417	Cover—Gear Case (Includes Figures 5 & 7)
	22643	Gear—Tool Spindle (2500 R.P.M.)	41	10222	Bearing—Ball
7	10013	Bearing—Needle	42	19137	Gear—1st Compound Cluster (625 R.P.M.)
8	10223	Bearing—Ball		19139	Gear—1st Compound Cluster (950 R.P.M.)
9	28545	Armature with Fan (625 & 950 R.P.M.)	43	34819	Pin
	28546	Armature with Fan (1600 & 2500 R.P.M.)	44	33415	Case—Gear (625 & 950 R.P.M.)
	16812	Armature with Fan & Bearing (625 & 950 R.P.M.)		33416	Case—Gear (1600 & 2500 R.P.M.)
	16813	Armature with Fan & Bearings (1600 & 2500 R.P.M.)	45	06592	Screw—#8 (2)*
10	10220	Bearing—Ball	46	34855	Bearing—Retainer Ring
11	21223	Spring—Friction	47	21516	Ring—Retainer
12	14849	Washer—Insulation (2)*	48	21342	Spring
13	14824	Pin—Brush Holder (2)*	49	14281	Ring—"O"
14	18109	Cap—Brush Holder (2)*	50	53100	Cover—Clutch Case
15	18009B	Brush—Pair	51	41251	Finder—Spring (260)
16	18062	Holder—Brush (2)*	52	44520	Retainer—Finder (260)
17	18840	Wire—Lead (9 1/2" Long)	53	54076	Protector—Thread (260)
18	06573	Screw—#8 (6)*	54	25854	Ring—Ball Retainer
19	33475	Housing	55	10902	Ball—Retainer
22	06088	Screw—#4 (2)*	56	33525	Ass'm.—Drive Socket
23	20264	Plate—Name (260)	57	34856	Roller (4)*
	20410	Plate—Name (269)	58	34854	Ring—Roller Retainer
24	28567	Field	59	33524	Ass'm.—Roller Cage
25	18839	Wire—Lead (7 1/2" Long)	60	2923	Ass'm.—Depth Locator (269)
26	18841	Wire—Lead (3 1/2" Long)		14110	Cap—End
27	18186	Switch—Reversing	61	2525	Holder—Magnetic Bit (269)
28	06224	Screw—#6	62	2922	Assy.—Depth Locator (Long Rd. Locator) (269)
29	09835	Washer—Lock #6 (2)*		14109	Cap—End
30	21455	Ring—Clinch	63	2920	Assy.—Depth Locator (Rd. Locator) (269)
32	18644	Cord—Electric, with Terminals		14109	Cap—End
			64	2921	Assy.—Depth Locator (Straddle Locator) (269)
			65	63109	Assy.—Switch
			66	05053	Insulation—Switch

* Order Quantity Needed

SIoux TOOLS INC.

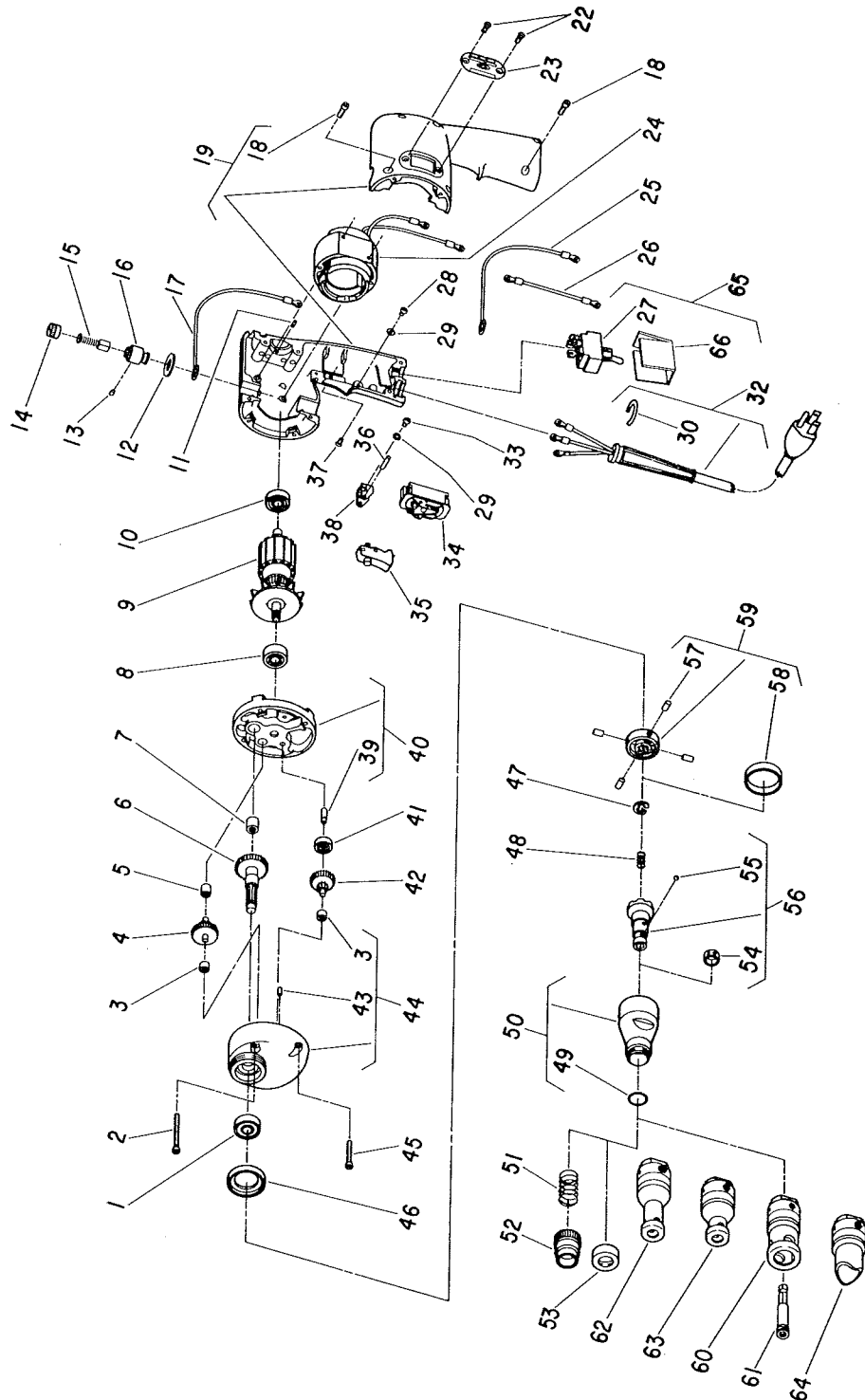
SIoux CITY, IOWA, U.S.A. 51102

SIoux



TOOLS

Parts List for No. 260 Sioux
1/4" ELECTRIC SCREW DRIVER
(Serial B100 & Up)
& No. 269 Depth Locator Screw Driver
(Up To Ser. Starting With "B")



Furnish Catalog, Serial and Model Number When Ordering Parts

This pdf incorporates the following model numbers:

260, 269