

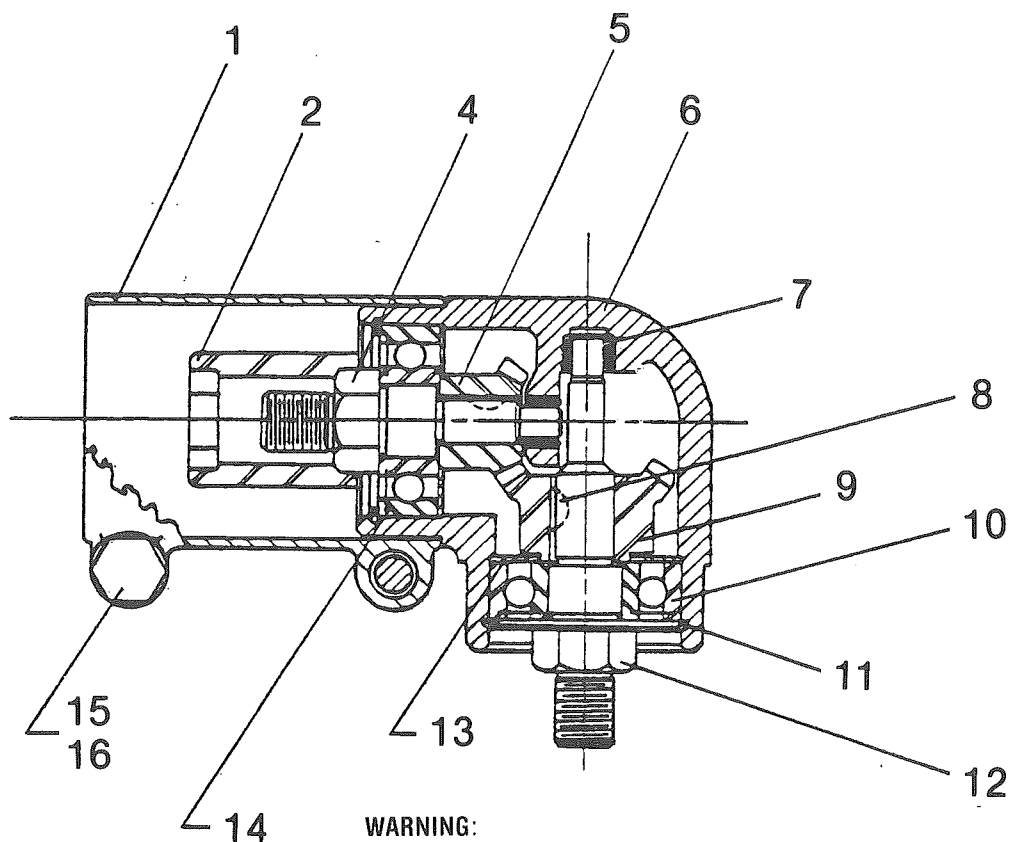


NOTE: Parts are no longer available for this tool.

The manual will continue on the next page.



INSTRUCTION MANUAL AND PARTS LIST NO. 2360 TWO SPEED ANGLE DRIVE



WARNING:

Electrical repairs should be attempted only by authorized trained repairmen. Consult your service center listing for your nearest SIOUX Authorized Service Center.

| Fig-ure | Part No. | Name |
|---------|----------|---------------------|
| 1 | 12444 | Adapter |
| 2 | 54944 | Driver Adapter |
| 4 | 22692 | Spindle |
| 5 | 19262 | Bevel Gear |
| 6 | 12671 | Housing |
| 7 | 10041 | Needle Bearing (2)* |
| 8 | 40148 | Woodruff Key (2)* |
| 9 | 19263 | Bevel Gear |
| 10 | 10937 | Ball Bearing |

| Fig-ure | Part No. | Name |
|---------|----------|---------------------|
| 11 | 21492 | Retaining Ring (2)* |
| 12 | 22693 | Spindle |
| 13 | 35734 | Washer (2)* |
| 14 | 10937 | Ball Bearing |
| 15 | 09104 | Screw (2)* |
| 16 | 35730 | Washer (2)* |

ITEMS NOT SHOWN

| | |
|-------|-------------------------------|
| 35735 | Wrench |
| 30206 | Hex Key—Allen Wrench (3/16") |
| 54990 | Nut—Drive (used on Air Tools) |

*Order Quantity As Needed



INSTRUCTION MANUAL AND PARTS LIST NO. 2360 TWO SPEED ANGLE DRIVE

ATTACHING ANGLE DRIVE TO DRILL—Remove the socket head screw (left handed thread) located in the chuck body. The screw is secured into the end of the spindle and is accessible for removal or replacement when the chuck jaws are completely opened. Remove the chuck. Place the coupling on the drill spindle so that the hex on the spindle engages with the hex-hole in the coupling. Loosen the clamping screws on the clamping sleeve. Slip the sleeve over the gear nose on the drill. Slide the Angle Drive Head into the other end of the clamping sleeve and turn the Drive Head in either direction so that the hexagon hole in the coupling engages with the hexagon portion of the spindle. HIGH speed or LOW speed will correspond to the exposed spindle. The LOW speed is designated on the Drive Head. The other end is the HIGH speed side. Turn the Angle Drive to a desired position and clamp in place by tightening the clamping screws.

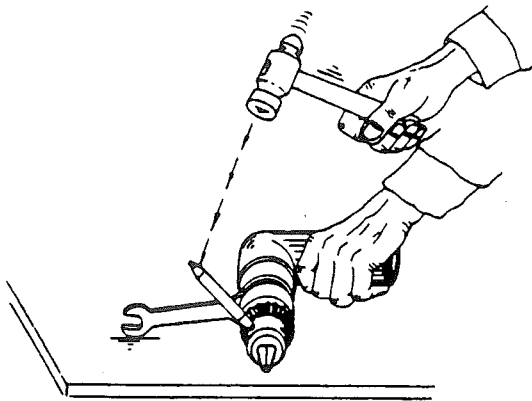


FIG. 1

TO REMOVE THE CHUCK FROM THE ANGLE DRIVE, (SEE FIGURE #1) it is advisable to remove the unit from the drill. Slip the open wrench #35735 over the flats on the spindle holding the chuck. Insert the chuck key in the key-hole of chuck. With the chuck and wrench both resting solidly on the bench top, strike chuck remover bar with a sharp, quick blow.

Note: Chuck has right hand thread.

NOTE: ALWAYS REST CHUCK OR COUPLING ON SOLID SURFACE BEFORE REMOVING. FAILURE TO DO SO MAY RESULT IN A BENT SPINDLE.

**SIoux
TOOLS INC.**

2901 FLOYD BOULEVARD ■ SIOUX CITY, IOWA 51102 ■

PRINTED IN U.S.A.

This pdf incorporates the following model numbers:

2360