



NOTE: Parts are no longer available for this tool.

The manual will continue on the next page.

SIoux



TOOLS

Parts List for No. 260 Sioux

ELECTRIC SCREW DRIVER

(UP TO SERIAL B99)

Furnish Catalog, Serial and Model Number When Ordering Parts

Fig- ure	Part No.	Name	Fig- ure	Part No.	Name
1	34861	Retainer—Finder	34	06074	Screw—#4
	21377	Spring—Finder	35	33421	Ass'm.—Trigger & Lock
2	33527	Cover—Clutch Case	36	18840	Wire—Lead
3	21342	Spring	37	17521	Field
4	21516	Ring—Retainer	38	18839	Wire—Lead
5	33524	Ass'm.—Roller Cage	39	16086	Armature with Fan (625 & 950 R.P.M.)
6	34856	Roller (4)*		16085	Armature with fan (1600 R.P.M.)
7	34854	Ring—Roller Retainer		16812	Armature with Fan & Bearings (625 & 950 R.P.M.)
8	06516	Screw—#8 (2)*		16813	Armature with Fan & Bearings (1600 R.P.M.)
9	22599	Gear—Tool Spindle	40	10223	Bearing—Ball
10	10013	Bearing—Needle	41	33417	Cover—Gear Case (Includes Figures 10 & 44)
11	10220	Bearing—Ball	42	34693	Pin—Support
12	14849	Washer—Insulation (2)*	43	10222	Bearing—Ball
13	18062	Holder—Brush (2)*	44	10026	Bearing—Needle
14	14824	Pin—Brush Holder (2)*	45	19137	Gear—1st Compound Cluster (625 R.P.M.)
15	18009B	Brush—Pair		19139	Gear—1st Compound Cluster (950 R.P.M.)
16	18109	Cap—Brush Holder (2)*	46	33410	Gear—2nd Compound Cluster (625 & 1600 R.P.M.)
17	06088	Screw—#4 (2)*		33412	Gear—2nd Compound Cluster (950 R.P.M.)
18	20273	Plate—Inspection Cover	47	10027	Bearing—Needle (625 & 950 R.P.M. 2) (1600 R.P.M. 1)
19	06573	Screw—#8 (6)*	48	06592	Screw—#8 (2)*
20	20264	Plate—Name	49	33415	Case—Gear (625 & 950 R.P.M.)
21	09950	Screw—Drive (2)*		33416	Case—Gear (1600 R.P.M.)
22	33475	Housing	50	10221	Bearing—Ball
23	18756	Adaptor	51	34855	Bearing—Retainer Ring
24	18644	Cord—Electric, with Terminals	52	33525	Ass'm.—Drive Socket
25	21455	Ring—Clinch	53	10902	Ball—Retainer
26	18186	Switch—Reversing	54	25854	Ring—Ball Retainer
27	18841	Wire—Lead			
28	25944	Bracket—Trigger Lock			
29	06224	Screw—#6			
	09835	Washer—Lock #6			
30	18191	Switch			
	14328	Button			
31	06362	Screw—#6			
	09835	Washer—Lock #6			
32	21223	Spring—Friction			
33	34694	Pin—Trigger Swivel			

* Order Quantity Needed

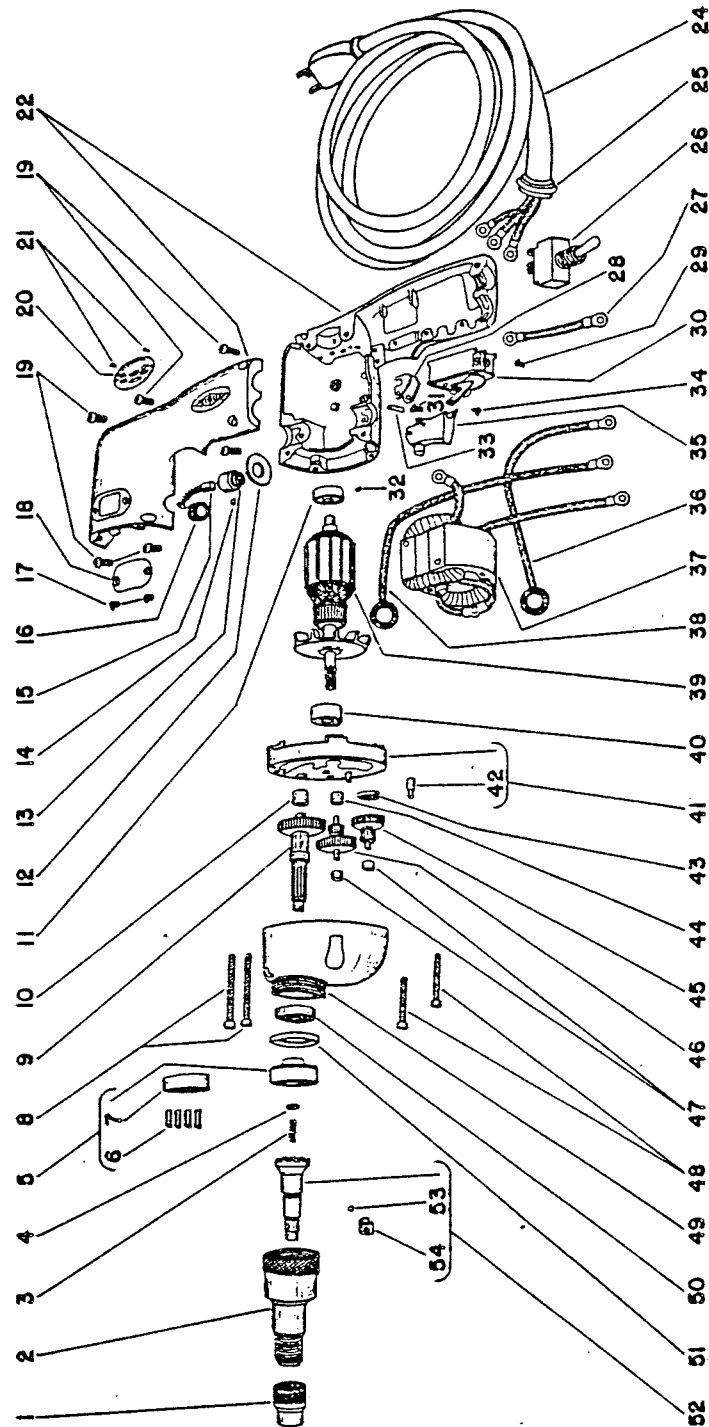
SIoux TOOLS INC.
SIoux CITY, IOWA, U.S.A. 51102

SIoux



TOOLS

Parts List for No. 260 Sioux ELECTRIC SCREW DRIVER (UP TO SERIAL B99)



Furnish Catalog, Serial and Model Number When Ordering Parts

This pdf incorporates the following model numbers:

260