



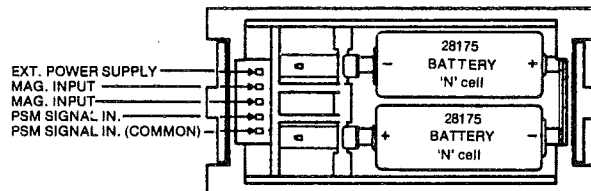
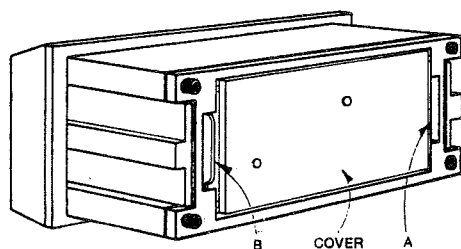
NOTE: Parts are no longer available for this tool.

The manual will continue on the next page.



Additional Instructions and Parts List for 2001 TR Tachometer

COVER REMOVAL & BATTERY REPLACEMENT



Remove cover by pressing cover in gently and slide toward connector until lip (A) on opposite end clears case. Spring on inside of cover will push it out. Batteries and connector are now accessible for removal. To replace, insert lip (B) first, then snap the cover in place until lip (A) is engaged in the case.

NOTE: INSURE BATTERIES ARE PLACED IN UNIT CORRECTLY, CONSULT LABEL ON INSIDE OF CASE.

FIGURE 1

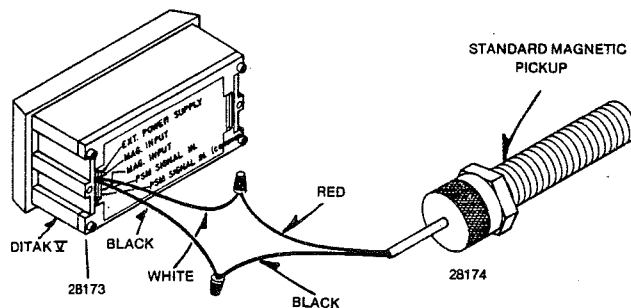
Insure black and white wires from Ditak V are in proper location i.e. white wire in the MAGNETIC INPUT (2nd from top), black wire in MAGNETIC INPUT (3rd from top).

NOTE: White and black wires are installed in these locations when unit is shipped.

Twist red wire from sensor together with white wire from Ditak V with wire nut supplied in accessory bag.

Twist black wire from sensor together with black wire from Ditak V with wire nut supplied in accessory bag.

Install batteries (See Battery Replacement Figure 1)



Tach is mounted on plate #35711 on the front of the chuck cover.

The pickup is mounted on plate #35723A at the rear of the chuck cover under the chuck spindle.

Chuck speed is read from a special chuck pulley #54880A.

The cable from the pickup enters the hood thru a 1/4" hole just below the large cable on the side of the chuck hood.

If tach readings are very low, or zero, adjust the air gap between the pickup and the pulley by turning the pickup in. Lock the pickup in place by tightening the locknut against the plate. The pickup should be very close to but not rub against the pulley.

If the display goes blank replace the batteries with SIOUX #28175 or Duracell 'N' cells.

SIOUX TOOLS INC.

2901 FLOYD BOULEVARD ■ SIOUX CITY, IOWA 51102 ■

This pdf incorporates the following model numbers:

2001TR