



NOTE: Parts are no longer available for this tool.

The manual will continue on the next page.



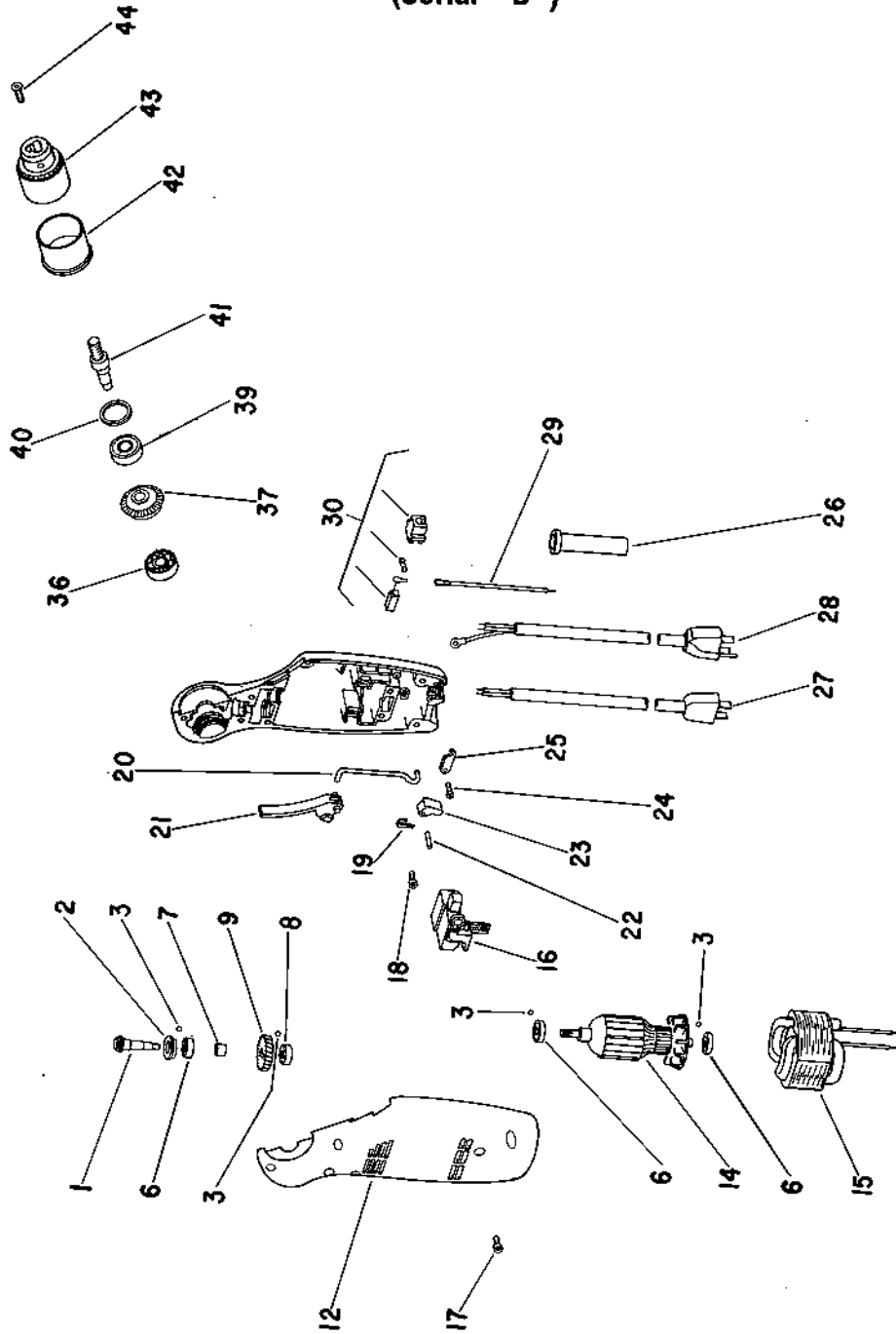
**SIoux
TOOLS INC.**

2901 FLOYD BOULEVARD ■ SIOUX CITY, IOWA 51102 ■

Form No. A762B
Dated 6/94

Parts List For 8000 SERIES DRILL

(Serial "B")



Furnish Catalog, Serial and Model Number When Ordering Parts



SIoux TOOLS INC.

2901 FLOYD BOULEVARD ■ SIOUX CITY, IOWA 51102 ■

Parts List For 8000 SERIES DRILL

(Serial "B")

Furnish Catalog, Serial and Model Number When Ordering Parts

Fig- ure	Part No.	Name
	1 19741	Assy Gear & Pinion (includes fig. #37) 750 RPM
	19742	Assy Gear & Pinion (includes fig. #37) 1300 RPM
	19743	Assy Gear & Pinion (includes fig. #37) 2500 RPM
†	2 54916	Spacer
	3 04293	Ball-Rubber (4)*
	6 65470	Bearing-Ball (3)*
	7 64107	Spacer
	8 65476	Bearing-Ball
†	9 19273	Gear (1300 & 2500 RPM)
	19276	Gear (750 RPM)
	12 63532	Assy Housing (includes (4) #3)
†	14 28684	Armature & Brgs. (115V, 1300 & 2500 RPM)
†	28684J	Armature & Brgs. (230V, 1300 & 2500 RPM)
	28676	Armature & Brgs. (115V, 750 RPM)
	28676J	Armature & Brgs. (230V, 750 RPM)
	15 28570	Field 115V
	28570J	Field 230V
	16 18218	Switch 115V
	18220	Switch 230V
	17 56201	Screw-Soc. Hd. (M4 x .7 x 10) (8)*
	18 56202	Screw-Soc. Hd. (M4 x .7 x 6) (Grd. Tools Only)
	19 18622	Strip-Grounding (Grounded Tools Only)
	20 54716	Rod-Switch
	21 14166	Lever-Trigger (Red)
	14186	Lever-Trigger (Yellow)
	22 40079	Pin
	23 14167	Bell Crank (Red)
	14185	Bell Crank (Yellow)

Fig- ure	Part No.	Name
	24 06105	Screw-Pan Head (6)*
	25 35587	Clamp-Strain Relief
	26 04291	Cord Protector
	27 18549	Cord 115V
		Cord 230V
	28 18460	Cord 115V (Grounded Only)
		Cord 230V (Grounded Only)
	29 28113	Terminal Wire (2)*
	30 63233	Brush & Holder (Pair)
	36 10942	Bearing-Ball
	37	See Fig. 1
	39 10221	Bearing-Ball
†	40 35744	Spacer
	41 64029	Output Shaft
	42 14165	Shroud—(1/4" & 3/8" Capacity)
	14183	Shroud—(1/2" Capacity)
	43 21133	Chuck—3/8" Capacity
	30002	Key
	21077	Chuck—1/4" Capacity
	30000	Key
	21132	Chuck—1/2" Capacity
	30429	Key
	44 57250	Screw (M5 x .8 x 20 LH) (1/4 Capacity)
	57250R	Screw (M5 x .8 x 20 LH) (3/8 & 1/2 Capacity)
ITEMS NOT SHOWN		
	20936	Decal-Reversing Lever (Set)
	65326	Label-Bilingual (8000 & 8050 Only)

Part No.	Name
20456	Plate-Name (8000)
20457	Plate-Name (8005)
20458	Plate-Name (8010)
20459	Plate-Name (8015)
20483	Plate-Name (8000G)

Part No.	Name
20484	Plate-Name (8005G)
20485	Plate-Name (8010G)
20486	Plate-Name (8015G)
20496	Plate-Name (8005J)
20497	Plate-Name (8010J)

Part No.	Name
20498	Plate-Name (8015J)
20509	Plate-Name (8000GJ)
20510	Plate-Name (8015GJ)
20512	Plate-Name (8005GJ)
20513	Plate-Name (8010GJ)

Part No.	Name
20523	Plate-Name (8050)
20524	Plate-Name (8050J)
20525	Plate-Name (8050G)
20526	Plate-Name (8050GJ)

*Order Quantity As Needed

†Earlier Model Housings Require
These Spacers (Fig. Nos. 2 & 40).

This pdf incorporates the following model numbers:

8000