



NOTE: Parts are no longer available for this tool.

The manual will continue on the next page.

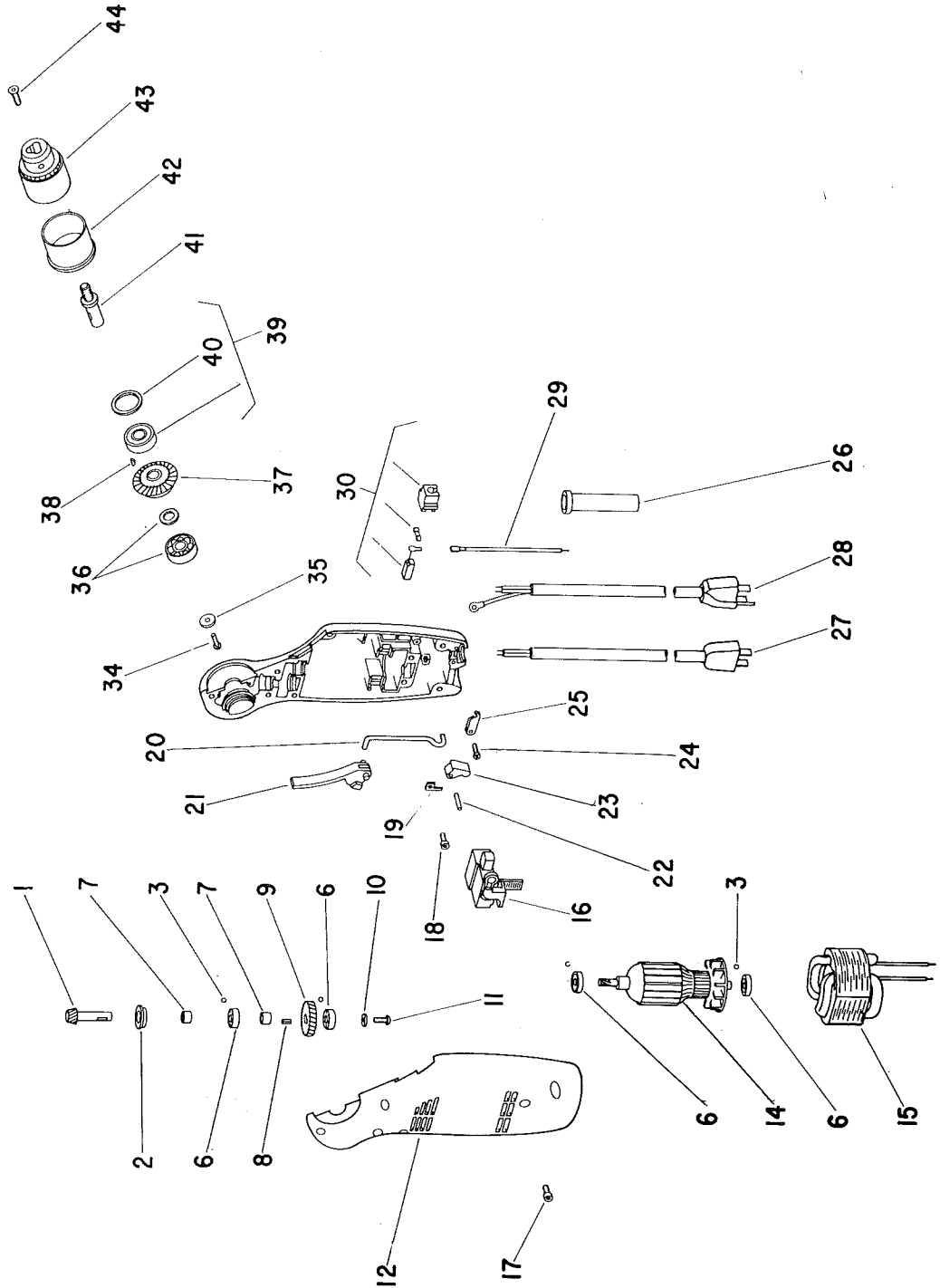


**SIoux
TOOLS INC.**

2901 FLOYD BOULEVARD ■ SIOUX CITY, IOWA 51102 ■

Form No. A762
Dated 4/85

PARTS LIST FOR 8000 SERIES DRILL



FURNISH CATALOG SERIAL & MODEL NUMBER WHEN ORDERING PARTS



SIoux TOOLS INC.

2901 FLOYD BOULEVARD ■ SIOUX CITY, IOWA 51102 ■

PARTS LIST FOR 8000 SERIES DRILL

FURNISH CATALOG SERIAL & MODEL NUMBER WHEN ORDERING PARTS

Fig-ure	Part No.	Name	Fig-ure	Part No.	Name
	1 19738	Assy Gear & Pinion (includes fig. #37) 750 RPM	24	06105	Screw-Pan Head (6)*
	19728	Assy Gear & Pinion (includes fig. #37) 1300 RPM	25	35587	Clamp-Strain Relief
	19729	Assy Gear & Pinion (includes fig. #37) 2500 RPM	26	04291	Cord Protector
††	2 54916	Spacer	27	18549	Cord 115V
	3 04293	Ball-Rubber (4)*			Cord 230V
	6 10927	Bearing-Ball (4)*	28	18460	Cord 115V (Grounded Only)
	7 54714	Spacer (2)*			Cord 230V (Grounded Only)
	8 54715	Key	29	28113	Terminal Wire (2)*
†	9 19248	Gear (1300 & 2500 RPM)	30	63233	Brush & Holder (Pair)
	19246	Gear (750 RPM)			
	10 35656	Washer	34	56250	Screw Button Head (M4 x .7 x 10)
	11 56102	Screw-Button Hd. (M3 x .5 x 10)	35	35581	Washer
	12 63257	Assy Housing (includes (4) #3)	36	53999	Bearing & Washer
†	14 28684	Armature & Brgs. (115V, 1300 & 2500 RPM)	37		See Fig. 1
†	28684J	Armature & Brgs. (230V, 1300 & 2500 RPM)	38	40077	Woodruff Key
	28676	Armature & Brgs. (115V, 750 RPM)	39	63074	Bearing & Washer
	28676J	Armature & Brgs. (230V, 750 RPM)	40	63073	Assy-Washers
15	28570	Field 115V	41	54812	Output Shaft
	28570J	Field 230V	42	14165	Shroud—(1/4" & 3/8" Capacity)
16	18218	Switch 115V		14183	Shroud (1/2" Capacity)
	18220	Switch 230V	43	21133	Chuck—3/8" Capacity
17	56201	Screw-Soc. Hd. (M4 x .7 x 10) (8)*		30002	Key
18	56202	Screw-Soc. Hd. (M4 x .7 x 6) (Grd. Tools Only)		21077	Chuck—1/4" Capacity
19	18622	Strip-Grounding (Grounded Tools Only)		30000	Key
20	54716	Rod-Switch		21132	Chuck—1/2" Capacity
21	14166	Lever-Trigger (Red)		30429	Key
	14186	Lever-Trigger (Yellow)	44	57250	Screw (M5 x .8 x 20 LH)
22	40079	Pin			
23	14167	Bell Crank (Red)	20936		Decal-Reversing Lever (Set)
	14185	Bell Crank (Yellow)			

Part No.	Name	Part No.	Name	Part No.	Name	Part No.	Name
20456	Plate-Name (8000)	20484	Plate-Name (8005G)	20498	Plate-Name (8015J)	20523	Plate-Name (8050)
20457	Plate-Name (8005)	20485	Plate-Name (8010G)	20509	Plate-Name (8000GJ)	20524	Plate-Name (8050J)
20458	Plate-Name (8010)	20486	Plate-Name (8015G)	20510	Plate-Name (8015GJ)	20525	Plate-Name (8050G)
20459	Plate-Name (8015)	20496	Plate-Name (8005J)	20512	Plate-Name (8005GJ)	20526	Plate-Name (8050GJ)
20483	Plate-Name (8000G)	20497	Plate-Name (8010J)	20513	Plate-Name (8010GJ)		

***Order Quantity as Needed**

- † If armature has Snap Ring on Gear End, order both Gear and Armature (63183 or 63183J) for service.
- †† Earlier model tools were equipped with Thrust Bearings and Washers which are replaced by a kit No. 63326 which includes Fig's. 2, 10, 11 and qty. 1 of Fig. 7.

This pdf incorporates the following model numbers:

8000