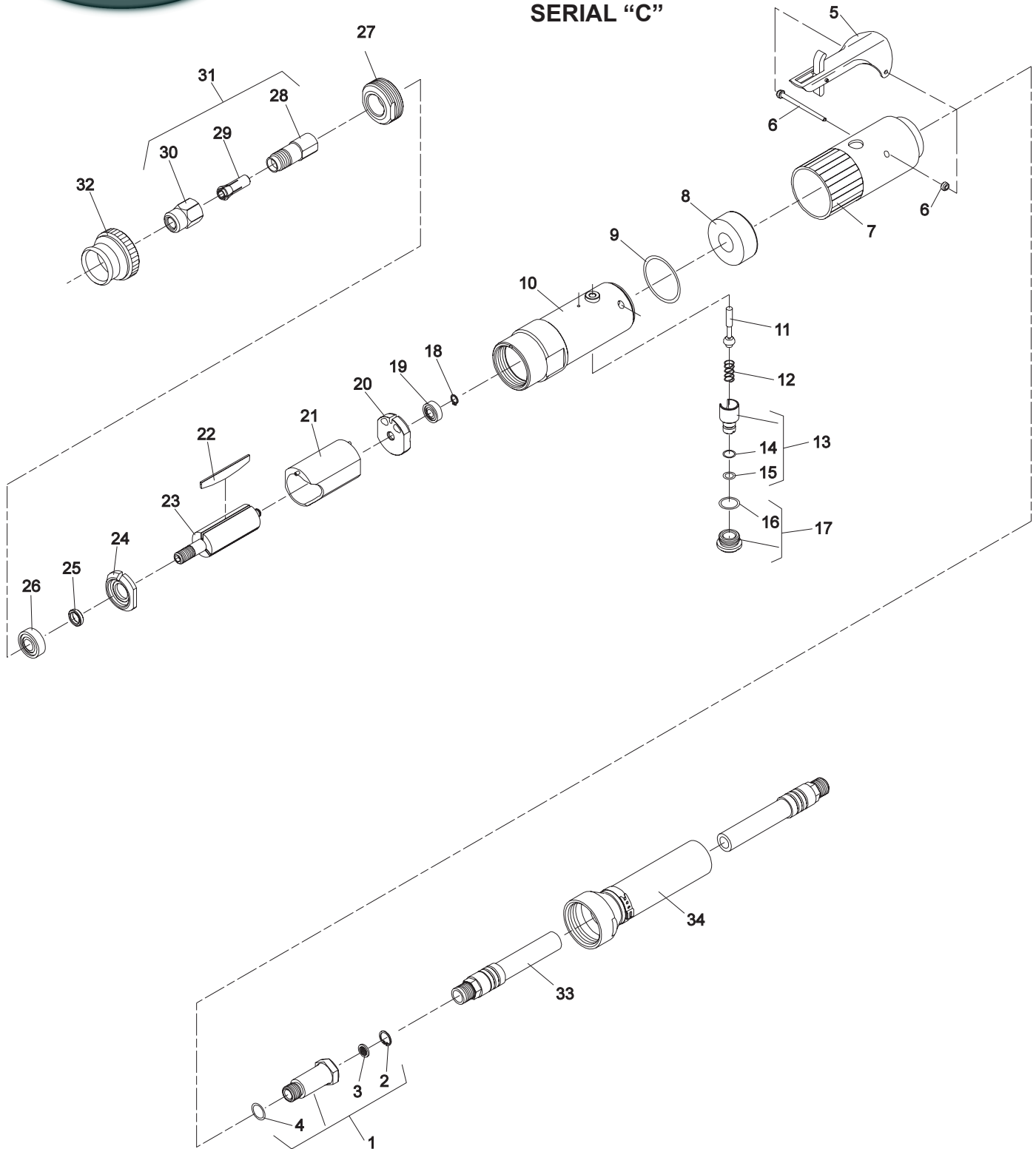




PARTS LIST FOR 1962 DIE GRINDER SERIAL "C"



SIoux TOOLS INC.



PARTS LIST FOR 1962 DIE GRINDER SERIAL "C"

Fig. No.	Part No.	Description
1.	54837	Adapter—Intake
2.	21541	Ring—Retaining
3.	30463	Screen
4.	14312	Ring—"O"
5.	63258	Ass'y—Lever
6.	66344	Ass'y—Pin
7.	04042	Cover—Housing
8.	40116	Material—Exhaust
9.	14333	Ring—"O"
10.	65965	Housing
11.	63241	Ass'y—Valve
12.	21427	Spring
13.	54843	Speed—Control
14.	14290	Ring—"O"
15.	14291	Ring—"O"
16.	54844	Retainer—Speed Control
17.	14309	Ring—"O"
18.	21491	Ring—Retaining
19.	10253	Bearing—Ball
20.	10552	End Plate—Rear
21.	64057	Cylinder
22.	63527	Vane (Set of 3)
23.	64058	Rotor
24.	64059	End Plate—Front
25.	44488	Spacer—Rotor
26.	10257	Bearing—Ball
27.	65964	Retainer
28.	21096	Body—Collet
29.	44440	Collet—1/4"
	66038	Collet—6mm
	66037	Collet—3mm
30.	21097	Nut—Collet
31.	43340	Chuck—1/4" Collet Complete
32.	44489	Deflector
33.	1376	Hose—Leader
34.	63355	Ass'y—Exhaust Hose
35.	25680	Washer
	30465	Wrench—9/16"
	30466	Wrench—11/16"

Remote Exhaust

FURNISH CATALOG, SERIAL, AND MODEL NUMBER WHEN ORDERING PARTS

SIoux TOOLS INC.

250 SNAP-ON DRIVE ■ PO BOX 1596 ■ MURPHY, NC 28906 ■ USA ■ Phone: 800-722-7290 ■ www.siouxtools.com

Printed In U.S.A.

This pdf incorporates the following model numbers:

1962