



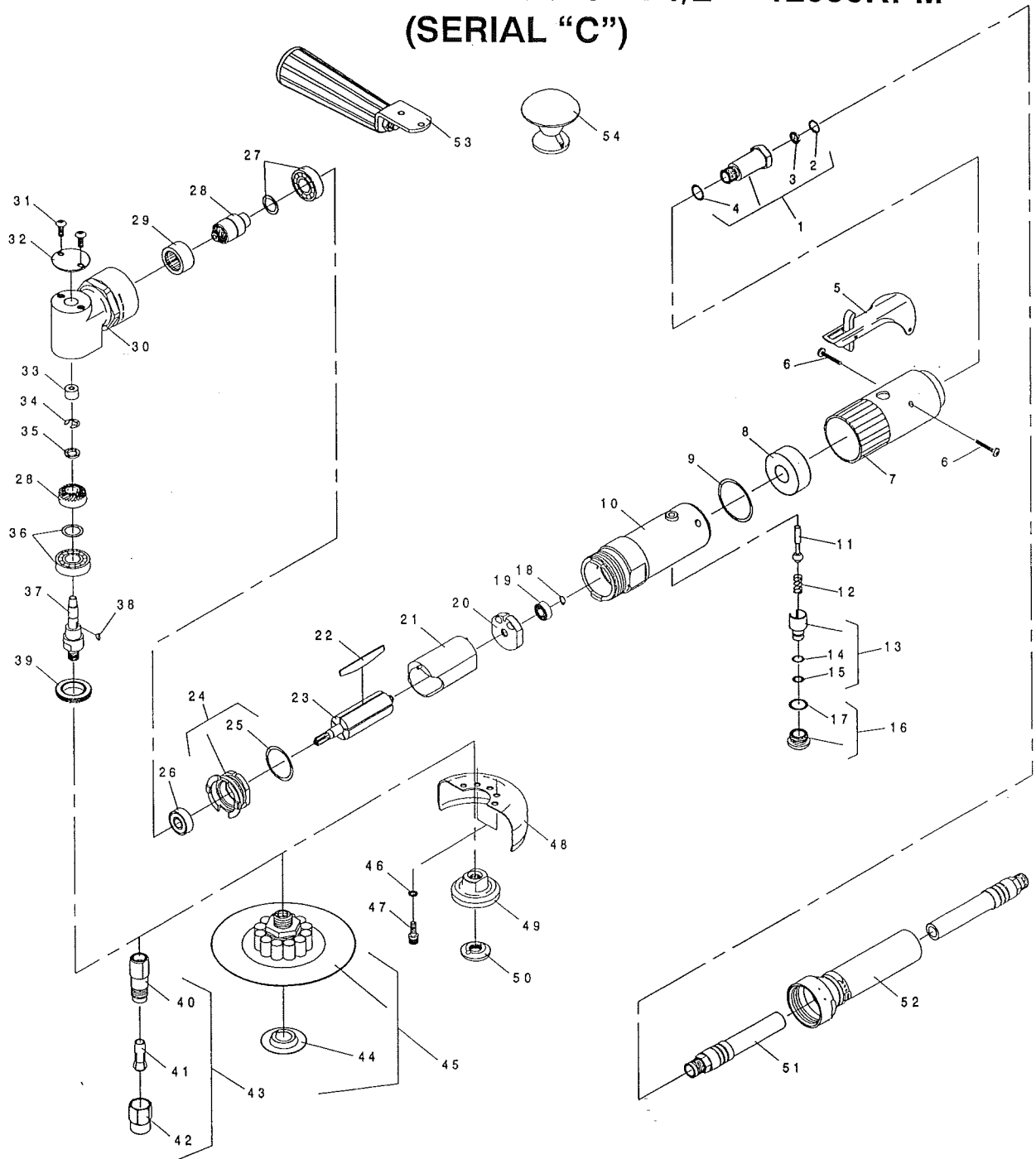
NOTE: Parts are no longer available for this tool.

The manual will continue on the next page.



PARTS LIST FOR

1963 RIGHT ANGLE DIE GRINDER—12000RPM
1964 RIGHT ANGLE DIE GRINDER—18000RPM
1965 RIGHT ANGLE SANDER—5"—12000RPM
1966 RIGHT ANGLE GRINDER—3"—18000RPM
1967 RIGHT ANGLE GRINDER—4"—12000RPM
1968 RIGHT ANGLE GRINDER—4 1/2"—12000RPM
(SERIAL "C")



SIoux
TOOLS INC.

2901 FLOYD BOULEVARD ■ SIOUX CITY, IOWA 51102-0507 ■



PARTS LIST FOR

1963 RIGHT ANGLE DIE GRINDER—12000RPM
1964 RIGHT ANGLE DIE GRINDER—18000RPM
1965 RIGHT ANGLE SANDER—5"—12000RPM
1966 RIGHT ANGLE GRINDER—3"—18000RPM
1967 RIGHT ANGLE GRINDER—4"—12000RPM
1968 RIGHT ANGLE GRINDER—4 1/2"—12000RPM
(SERIAL "C")

Fig. No.	Part No.	Name	Fig. No.	Part No.	Name
1.	54837	Adaptor—Intake	36.	63235	Ass'y—Bearing & Spacer (Gear)
2.	21541	Ring—Retaining	37.	54956	Spindle—Output (1963, 1964, 1965)
3.	30463	Screen		54957	Spindle—Output (1966, 1967)
4.	14312	Ring—"O"		65693	Spindle—Output (1968)
5.	63258	Ass'y—Lever	38.	40077	Key
6.	65499	Screw—Pan Hd (Selftap)(#6—32 x 3/4 Long)(2)*	39.	44776	Retainer—Bearing
7.	04042	Cover—Housing	40.	21096	Body—Collet (1963, 1964)
8.	40116	Material—Exhaust	41.	44440	Collet—1/4" (1963, 1964)
9.	14313	Ring—"O"	42.	21097	Nut—Collet (1963, 1964)
10.	64036	Housing	43.	43340	Chuck—1/4" Collet Complete (1963, 1964)
11.	63241	Ass'y—Valve	44.	563	Nut—Disk Retaining (Package of 6)(1965)
12.	21427	Spring	45.	2344	Pad Backing [Inc. (1) Fig. 44](1965)
13.	54843	Speed—Control	46.	09724	Washer—Lock (1966, 1967, 1968)(2)*
14.	14394	Ring—"O"	47.	07095	Screw—Socket Hd. Cap Screw (#10-24 x 1/2") (1966, 1967, 1968)(2)*
15.	14291	Ring—"O"	48.	2346	3" Wheel Guard [Incl. (2) Fig. 46 & 47](1966)
16.	54844	Retainer—Speed Control		2347	4" Wheel Guard [Incl. (2) Fig. 46 & 47](1967)
17.	14309	Ring—"O"		2341	4 1/2" Wheel Guard [Incl. (2) Fig. 46 & 47](1968)
18.	21491	Ring—Retaining	49.	54958	Hub—Grinding Wheel (1966, 1967)
19.	10230	Bearing—Ball		65747	Flange—Inner (1968)
20.	10552	End Plate—Rear	50.	54959	Retainer—Grinding Wheel (1966, 1967)
21.	64057	Cylinder		65748	Flange—Outer (1968)
22.	63192	Vane (Set of 5)	51.	1376	Hose—Leader
23.	54861	Rotor	52.	63355	Ass'y—Exhaust Hose
24.	65335	End Plate—Front	53.	2357	Handle—Auxiliary
25.	14342	Ring—"O"	54.	2359	Knob—Auxiliary
26.	10220	Bearing—Ball			Remote Exhaust
27.	63234	Bearing & Spacer (Pinion)			Not Furnished
28.	19736	Gear Set (1964, 1966)		30465	Wrench-9/16" (1963, 1964, 1965)
	19737	Gear Set (1963, 1965, 1967, 1968)		30466	Wrench-11/16" (1963, 1964)
29.	10081	Bearing—Caged Needle Roller		30505	Wrench-5/8" (1966, 1967, 1968)
30.	65388	Ass'y—Angle Head (Incl. Figs. 29 & 33)		35545	Wrench-Spanner (1966, 1967)
31.	07097	Screw—Button Hd. Socket (#10-24 x 1/2") (2)*		1J328	Wrench-Spanner (1968)
32.	35708	Cover			Complete Assembly
33.	10082	Bearing—Caged Needle Roller		65361	Ass'y-Angle Head Complete (1966)
34.	21516	Ring—Retaining		65362	Ass'y-Angle Head Complete (1964)
35.	35761	Washer (1964, 1966)		65363	Ass'y-Angle Head Complete (1967)
				65364	Ass'y-Angle Head Complete (1963, 1965)
				65695	Ass'y-Angle Head Complete (1968)

* Order Quantity As Needed

SIoux
TOOLS INC.

2901 FLOYD BOULEVARD ■ SIOUX CITY, IOWA 51102-0507 ■

This pdf incorporates the following model numbers:

1963, 1964, 1965, 1966, 1967, 1968