



NOTE: Parts are no longer available for this tool.

The manual will continue on the next page.



SIoux TOOLS INC.

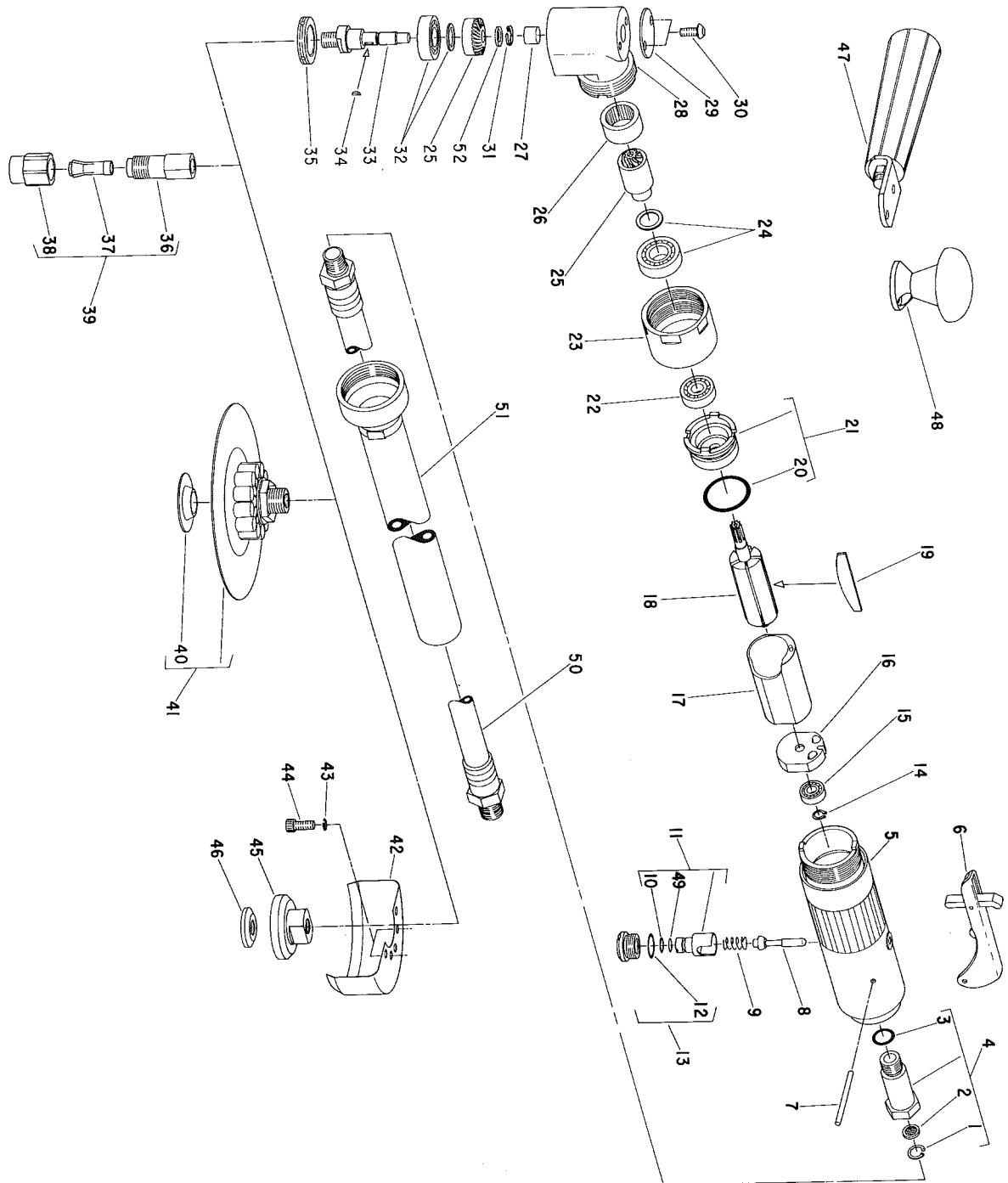
2901 FLOYD BOULEVARD ■ SIOUX CITY, IOWA 51102 ■

Form No. A752B
Dated 9/88

Parts List For

- 1963 Right Angle Die Grinder—12000 RPM
- 1964 Right Angle Die Grinder—18000 RPM
- 1965 Right Angle Sander—5''—12000 RPM
- 1966 Right Angle Grinder—3''—18000 RPM
- 1967 Right Angle Grinder—4''—12000 RPM

(SERIAL "B")



Furnish Catalog, Serial and Model Number When Ordering Parts

Parts List For

1963 Right Angle Die Grinder—12000 RPM

1964 Right Angle Die Grinder—18000 RPM

1965 Right Angle Sander—5''—12000 RPM

1966 Right Angle Grinder—3''—18000 RPM

1967 Right Angle Grinder—4''—12000 RPM

Furnish Catalog, Serial and Model Number When Ordering Parts

(SERIAL "B")

Fig- ure	Part No.	Name	Fig- ure	Part No.	Name
1	21541	Ring—Retaining	31	21516	Ring—Retaining
2	30463	Screen	32	63235	Assy.—Bearing & Spacer (Gear)
3	14312	Ring—"O"	33	54956	Spindle—Output(1963, 1964, 1965)
4	54837	Adaptor—Intake (Included In Fig. 5)		54957	Spindle—Output(1966, 1967)
5	63315	Assy.—Housing (Includes Fig. 4)	34	40077	Key
	14193	Cover (Cover Only)	35	44776	Retainer—Bearing
6	63258	Assy.—Lever	36	21096	Body—Collet (1963, 1964)
7	40117	Pin	37	44440	Collet—1/4'' (1963, 1964)
8	63241	Assy.—Valve	38	21097	Nut—Collet (1963, 1964)
9	21427	Spring	39	43340	Chuck—1/4'' Collet Complete (1963, 1964)
10	14291	Ring—"O"	40	563	Nut—Disc Retaining (Package of 6)(1965)
11	54843	Control—Speed	41	2344	Pad Backing (Incl. One Fig. 40)(1965)
12	14309	Ring—"O"	42	2346	3'' Wheel Guard (Includes (2) Figs. 43 & 44)(1966)
13	54844	Retainer—Speed Control		2347	4'' Wheel Guard (Includes (2) Figs. 43 & 44)(1967)
14	21491	Ring—Retaining	43	09724	Washer—Lock (1966, 1967)(2)*
15	10230	Bearing—Ball	44	07095	Screw—Soc. Hd. Cap, #10-24x1/2'' (1966, 1967)(2)*
16	10552	End Plate—Rear	45	54958	Hub—Grinding Wheel(1966, 1967)
17	64057	Cylinder	46	54959	Retainer—Grinding Wheel(1966, 1967)
18	54861	Rotor	47	2357	Handle—Auxiliary
19	63192	Vane (Set of 5)	48	2359	Handle—Knob
20	14342	Ring—"O"	49	14394	Ring—"O"
21	63314	Assy.—Front End Plate	50	1376	Hose—Leader(1963X thru 1967X)
22	10220	Bearing—Ball	51	63355	Ass'y.—Exhaust Hose(1963X thru 1967X)
23	54845-3	Retainer—Angle Head (1963)		30465	Wrench—9/16''(1963, 1964, 1965)
	54845-4	Retainer—Angle Head (1964)		30466	Wrench—11/16''(1963, 1964)
	54845-5	Retainer—Angle Head (1965)		30505	Wrench—5/8''(1966, 1967)
	54845-6	Retainer—Angle Head (1966)		35545	Wrench—Spanner (1966, 1967)
	54845-7	Retainer—Angle Head (1967)	52	35761	Washer (1964, 1966)
24	63234	Assy.—Bearing & Spacer (Pinion)			
25	19737	Gear Set (1963, 1965, 1967)			
	19736	Gear Set (1964, 1966)			
26	10081	Bearing—Caged Needle Roller			
27	10082	Bearing—Caged Needle Roller			
28	63313	Assy.—Angle Head (Includes Figs. 26 & 27)			
	63281	Ass'y.—Angle Head Complete(1963, 1965)			
	63366	Ass'y.—Angle Head Complete(1964)			
	63367	Ass'y.—Angle Head Complete(1966)			
	63282	Ass'y.—Angle Head Complete(1967)			
29	35708	Cover			
30	07097	Screw—Button Hd. Socket, #10-24x1/2 (2)*			

Not Furnished with Tool

*Order Quantity As Needed



SIoux TOOLS INC.

2901 FLOYD BOULEVARD ■ SIOUX CITY, IOWA 51102 ■

PRINTED IN U.S.A.

This pdf incorporates the following model numbers:

1963, 1964, 1965, 1966, 1967