



NOTE: Parts are no longer available for this tool.

The manual will continue on the next page.



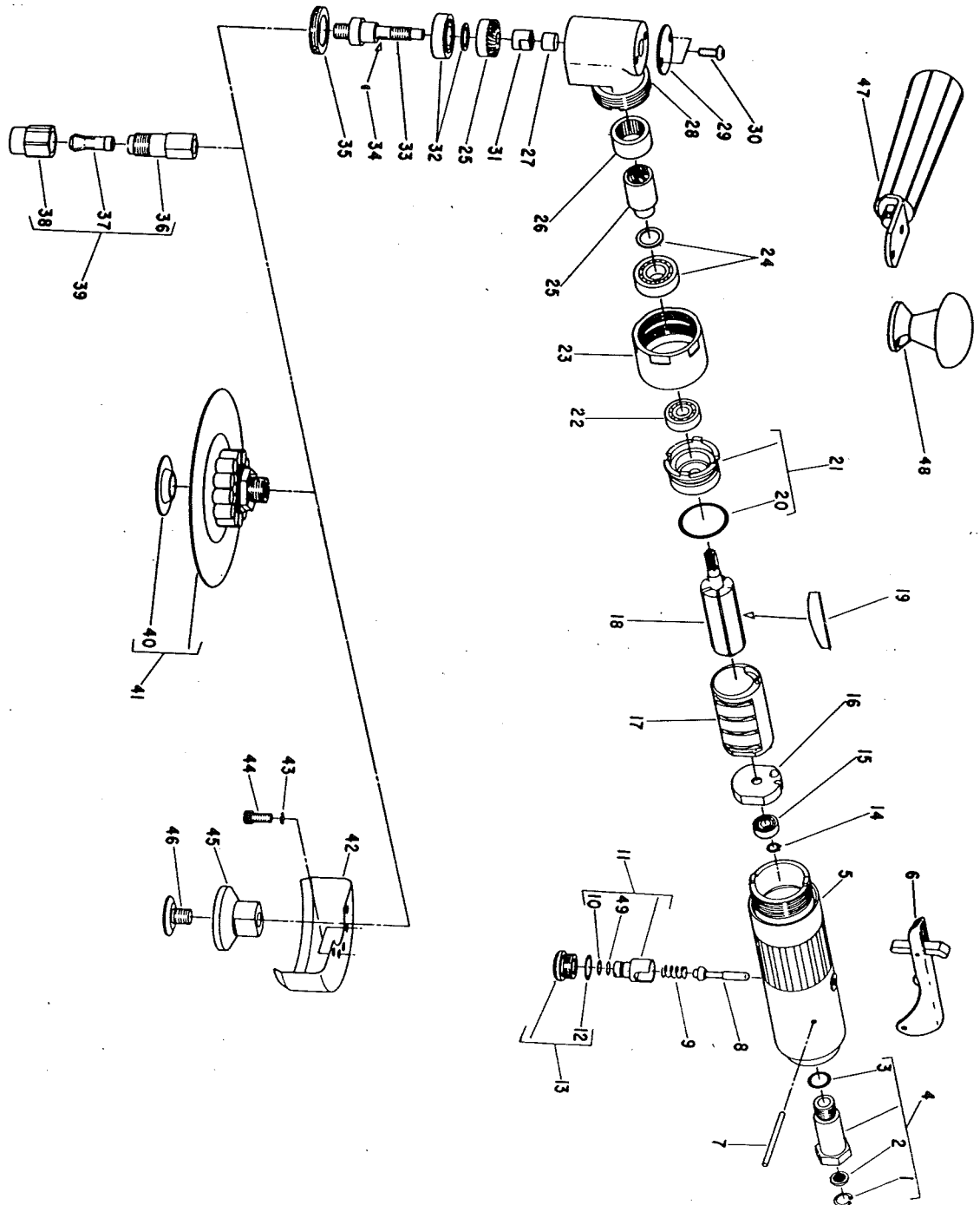
SIoux
TOOLS INC.

2901 FLOYD BOULEVARD ■ SIOUX CITY, IOWA 51102 ■

Form No. A752
Dated 12/83

Parts List For

- 1963 Right Angle Die Grinder—12000 RPM**
- 1964 Right Angle Die Grinder—18000 RPM**
- 1965 Right Angle Sander—5"—12000 RPM**
- 1966 Right Angle Grinder—3"—18000 RPM**
- 1967 Right Angle Grinder—4"—12000 RPM**



Furnish Catalog, Serial and Model Number When Ordering Parts

Parts List For
1963 Right Angle Die Grinder—12000 RPM
1964 Right Angle Die Grinder—18000 RPM
1965 Right Angle Sander—5''—12000 RPM
1966 Right Angle Grinder—3''—18000 RPM
1967 Right Angle Grinder—4''—12000 RPM

Furnish Catalog, Serial and Model Number When Ordering Parts

Fig- ure	Part No.	Name	Fig- ure	Part No.	Name
1	21541	Ring—Retaining	24	63234	Assy.—Bearing & Spacer (Pinion)
2	30463	Screen	25	19737	Gear Set (1963, 1965, 1967)
3	14312	Ring—"O"		19736	Gear Set (1964, 1966)
4	54837	Adaptor—Intake (Included In Fig. 5)	26	10081	Bearing—Caged Needle Roller
5	63315	Assy.—Housing (Includes Fig. 4)	27	10082	Bearing—Caged Needle Roller
6	63258	Assy.—Lever	28	63313	Assy.—Angle Head (Includes Figs. 26 & 27)
7	40117	Pin		63239	Ass'y.—Angle Head Complete (1963, 1965, 1967)
8	63241	Assy.—Valve		63240	Ass'y.—Angle Head Complete (1964, 1966)
9	21427	Spring			Includes Figs. 24 thru 35
10	14291	Ring—"O"	29	35708	Cover
11	54843	Control—Speed	30	07097	Screw—Button Hd. Socket, #10-24x1/2 (2)*
12	14309	Ring—"O"	31	54849	Nut—Spindle
13	54844	Retainer—Speed Control	32	63235	Assy.—Bearing & Spacer (Gear)
14	21491	Ring—Retaining	33	54846	Spindle—Output
15	10230	Bearing—Ball	34	40077	Key
16	10546	End Plate—Rear	35	44776	Retainer—Bearing
17	54848	Cylinder	36	21096	Body—Collet (1963, 1964)
18	54861	Rotor	37	44440	Collet—1/4'' (1963, 1964)
19	63192	Vane (Set of 5)	38	21097	Nut—Collet (1963, 1964)
20	14342	Ring—"O"	39	43340	Chuck—1/4'' Collet Complete (1963, 1964)
21	63314	Assy.—Front End Plate	40	563	Nut—Disc Retaining (Package of 6)(1965)
22	10220	Bearing—Ball	41	2344	Pad Backing (Incl. One Fig. 40)(1965)
23	54845-3	Retainer—Angle Head (1963)	42	2346	3'' Wheel Guard (Includes (2) Figs. 43 & 44)(1966)
	54845-4	Retainer—Angle Head (1964)		2347	4'' Wheel Guard (Includes (2) Figs. 43 & 44)(1967)
	54848-5	Retainer—Angle Head (1965)	43	09724	Washer—Lock (1966, 1967)(2)*
	54845-6	Retainer—Angle Head (1966)	44	07095	Screw—Soc. Hd. Cap, #10-24x1/2'' (1966, 1967)(2)*
	54845-7	Retainer—Angle Head (1967)	45	54526	Hub—Grinding Wheel (1966, 1967)
			46	54536	Retainer—Grinding Wheel (1966, 1967)
			47	2357	Handle—Auxiliary
			48	2359	Handle—Knob
			49	14394	Ring—"O"

*Order Quantity As Needed



SIoux
TOOLS INC.

2901 FLOYD BOULEVARD ■ SIOUX CITY, IOWA 51102 ■

PRINTED IN U.S.A.

This pdf incorporates the following model numbers:

1963, 1964, 1965, 1966, 1967