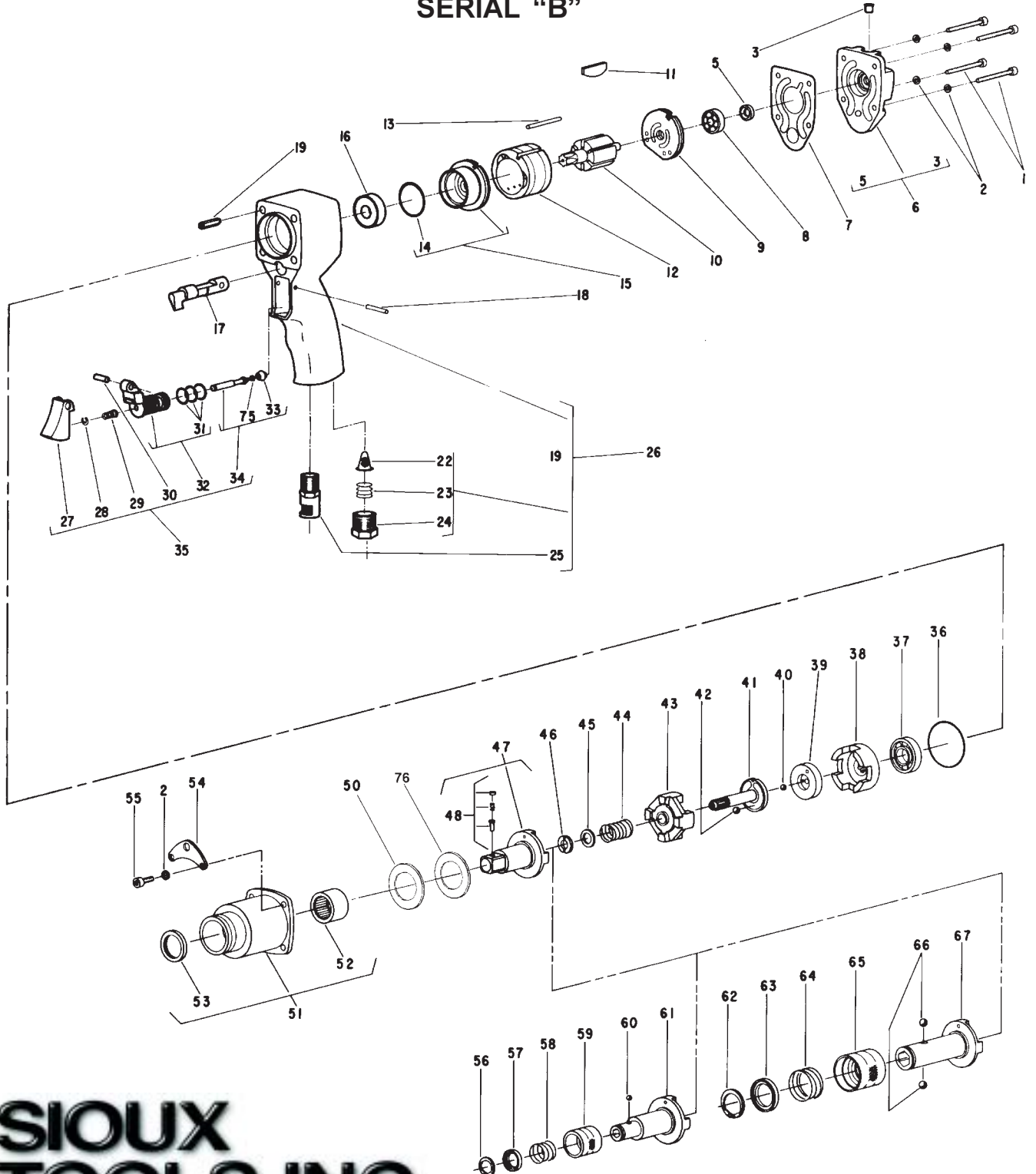




PARTS LIST FOR 4073, 4074 AIR IMPACT WRENCHES AND 4070, 4071 SCREWDRIVERS SERIAL "B"



SIoux TOOLS INC.

250 SNAP-ON DRIVE ■ PO BOX 1596 ■ MURPHY, NC 28906 ■ USA ■

Printed In U.S.A.



PARTS LIST FOR 4073, 4074 AIR IMPACT WRENCHES AND 4070, 4071 SCREWDRIVERS SERIAL "B"

| Fig. No. | Part No. | Description |
|----------|----------|---------------------------------|
| 1. | 06603 | Screw (#8-32 x 1-1/2")(4)* |
| 2. | 09712 | Washer (#8)(8)* |
| 3. | 30356 | Fitting-Grease |
| 5. | 30498 | Seal |
| 6. | 53215 | Ass'y-Back Cap |
| 7. | 14798 | Gasket |
| 8. | 10219 | Bearing-Ball |
| 9. | 43532 | Ass'y-Rear End Plate |
| 10. | 44846 | Rotor |
| 11. | 33940 | Vane-Rotor (Set of 6) |
| 12. | 44737 | Cylinder |
| 13. | 30424 | Pin-Alignment |
| 14. | 14334 | Ring-"O" (Early Models) |
| 15. | 53214 | Ass'y-Front End Plate |
| 16. | 10221 | Bearing-Ball |
| 17. | 11581 | Valve-Reversing |
| 18. | 30322 | Pin |
| 19. | 44106 | Insert (4)* |
| 22. | 33993 | Ass'y-Air Screen |
| 23. | 21417 | Spring |
| 24. | 44100 | Bushing-Reducing |
| 25. | 43543 | Ass'y-Deflecting Silencer |
| 26. | 53092 | Ass'y-Housing |
| 27. | 53182 | Ass'y-Adjustable Trigger |
| 28. | 21542 | Ring-Retainer |
| 29. | 21401 | Spring |
| 30. | 44754 | Bushing |
| 31. | 14312 | Ring-"O" (2)* |
| 32. | 63369 | Ass'y-Valve Body & "O" Ring |
| 33. | 14325 | Valve |
| 34. | 53296 | Ass'y-Plunger Valve |
| 35. | 63368 | Ass'y-Adjustable Throttle Valve |
| 36. | 14313 | Ring-"O" |
| 37. | 10203 | Bearing-Ball |
| 38. | 54810 | Frame-Hammer |
| 39. | 44673 | Bearing-Spindle & Cam |

| Fig. No. | Part No. | Description |
|----------|----------|---|
| 40. | 10306 | Ball-3/16" |
| 41. | 44309 | Cam-Spindle |
| 42. | 10291 | Ball-7/32" |
| 43. | 11558 | Hammer-Auxiliary Impact |
| 44. | 21404 | Spring |
| 45. | 35094 | Washer |
| 46. | 35093 | Washer-Split (2)* |
| 47. | 54814 | Anvil-1/2" Square Drive (4074) |
| | 54813 | Anvil-3/8" Square Drive (4073) |
| 48. | 33465 | Ass'y-Socket Retainer (For 3/8" Square)(4093) |
| | 43890 | Ass'y-Socket Retainer (For 1/2" Square)(4074) |
| 50. | 10053 | Washer |
| 51. | 63125 | Ass'y-Hammer Case |
| 52. | 10056 | Bearing-Needle |
| 53. | 30258 | Seal |
| 54. | 35041 | Bail-Front |
| 55. | 06501 | Screw (#8-32 x 1/2")(4)* |
| 56. | 21501 | Spring- Retainer (4070) |
| 57. | 44660 | Ring-Guide (4070) |
| 58. | 21406 | Spring (4070) |
| 59. | 44161 | Retainer-Ball (4070) |
| 60. | 10902 | Ball-5/32" (4070) |
| 61. | 54815 | Anvil-1/4" Hex (4070) |
| 62. | 21524 | Ring (4071) |
| 63. | 44239 | Ring-Guide (4071) |
| 64. | 21414 | Spring (4071) |
| 65. | 44238 | Retainer-Ball (4071) |
| 66. | 10299 | Ball-1/4" (4071)(2)* |
| 67. | 54816 | Anvil-7/16" Hex (4071) |
| 75. | 35311 | Washer |
| 76. | 10052 | Bearing—Needle Thrust |

*Order Quantity As Required

FURNISH CATALOG, SERIAL, AND MODEL NUMBER
WHEN ORDERING PARTS

SIoux TOOLS INC.

250 SNAP-ON DRIVE ■ PO BOX 1596 ■ MURPHY, NC 28906 ■ USA ■

Printed In U.S.A.

This pdf incorporates the following model numbers:

4070, 4071, 4073, 4074