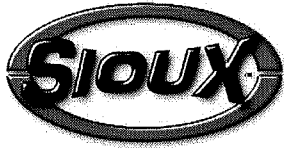


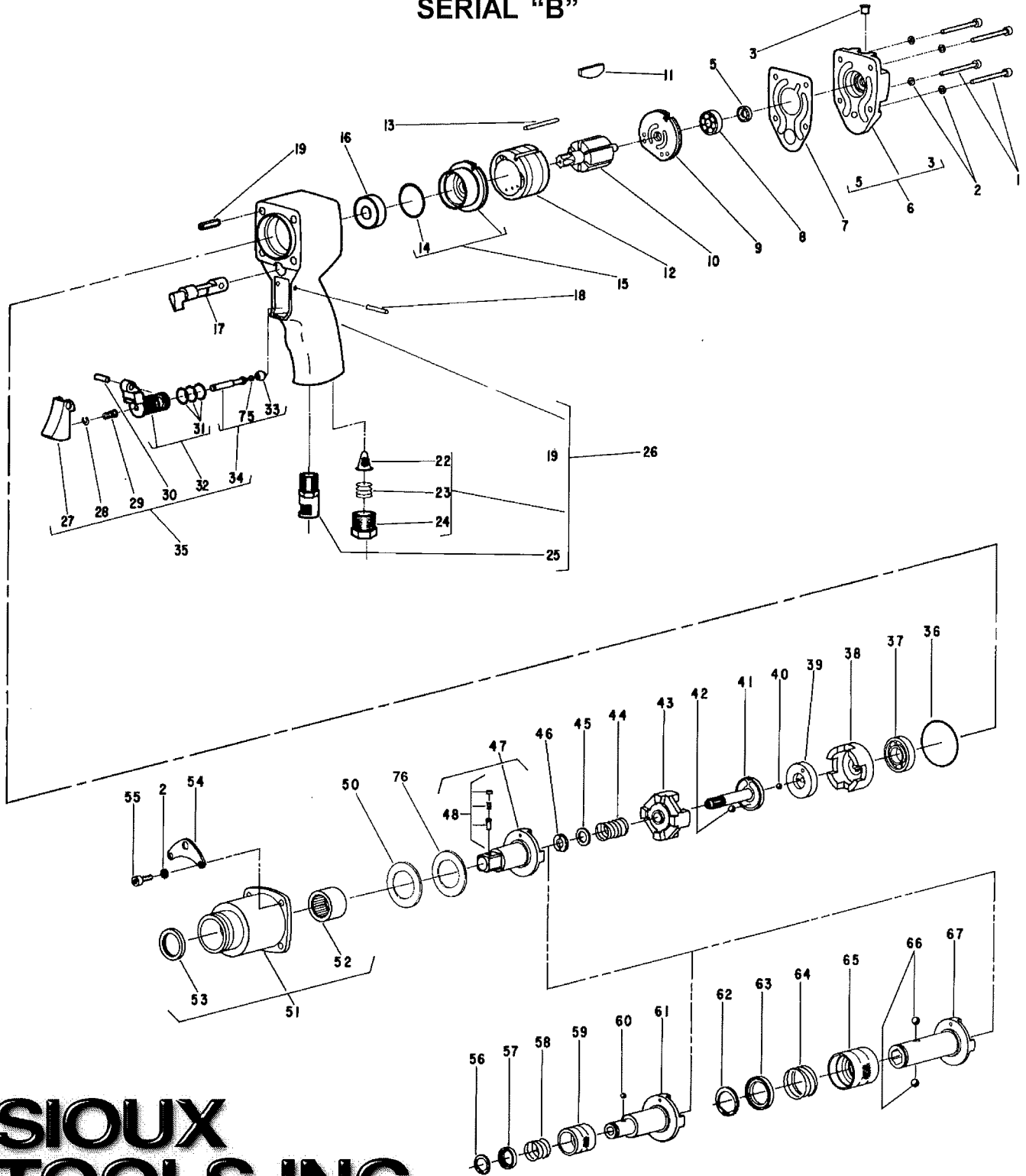


**NOTE: Parts are no longer available for this tool.**

**The manual will continue on the next page.**



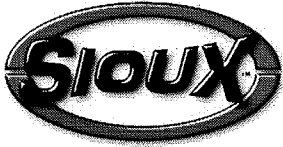
# PARTS LIST FOR 4073, 4074 AIR IMPACT WRENCHES AND 4070, 4071 SCREWDRIVERS SERIAL "B"



# SIoux TOOLS INC.

250 SNAP-ON DRIVE ■ PO BOX 1596 ■ MURPHY, NC 28906 ■ USA ■

Printed In U.S.A.



**PARTS LIST FOR  
4073, 4074 AIR IMPACT WRENCHES  
AND 4070, 4071 SCREWDRIVERS  
SERIAL "B"**

<b>Fig. No.</b>	<b>Part No.</b>	<b>Description</b>
1.	06603	Screw (#8-32 x 1-1/2")(4)*
2.	09712	Washer (#8)(8)*
3.	30356	Fitting-Grease
5.	30498	Seal
6.	53215	Ass'y-Back Cap
7.	14798	Gasket
8.	10219	Bearing-Ball
9.	43532	Ass'y-Rear End Plate
10.	44846	Rotor
11.	33940	Vane-Rotor (Set of 6)
12.	44737	Cylinder
13.	30424	Pin-Alignment
14.	14334	Ring-"O" (Early Models)
15.	53214	Ass'y-Front End Plate
16.	10221	Bearing-Ball
17.	11581	Valve-Reversing
18.	30322	Pin
19.	44106	Insert (4)*
22.	33993	Ass'y-Air Screen
23.	21417	Spring
24.	44100	Bushing-Reducing
25.	43543	Ass'y-Deflecting Silencer
26.	53092	Ass'y-Housing
27.	53182	Ass'y-Adjustable Trigger
28.	21542	Ring-Retainer
29.	21401	Spring
30.	44754	Bushing
31.	14312	Ring-"O" (2)*
32.	63369	Ass'y-Valve Body & "O" Ring
33.	14325	Valve
34.	53296	Ass'y-Plunger Valve
35.	63368	Ass'y-Adjustable Throttle Valve
36.	14313	Ring-"O"
37.	10203	Bearing-Ball
38.	54810	Frame-Hammer
39.	44673	Bearing-Spindle & Cam

<b>Fig. No.</b>	<b>Part No.</b>	<b>Description</b>
40.	10306	Ball-3/16"
41.	44309	Cam-Spindle
42.	10291	Ball-7/32"
43.	11558	Hammer-Auxiliary Impact
44.	21404	Spring
45.	35094	Washer
46.	35093	Washer-Split (2)*
47.	54814	Anvil-1/2" Square Drive (4074)
	54813	Anvil-3/8" Square Drive (4073)
48.	33465	Ass'y-Socket Retainer (For 3/8" Square)(4093)
	43890	Ass'y-Socket Retainer (For 1/2" Square)(4074)
50.	10053	Washer
51.	63125	Ass'y-Hammer Case
52.	10056	Bearing-Needle
53.	30258	Seal
54.	35041	Bail-Front
55.	06501	Screw (#8-32 x 1/2")(4)*
56.	21501	Spring- Retainer (4070)
57.	44660	Ring-Guide (4070)
58.	21406	Spring (4070)
59.	44161	Retainer-Ball (4070)
60.	10902	Ball-5/32" (4070)
61.	54815	Anvil-1/4" Hex (4070)
62.	21524	Ring (4071)
63.	44239	Ring-Guide (4071)
64.	21414	Spring (4071)
65.	44238	Retainer-Ball (4071)
66.	10299	Ball-1/4" (4071)(2)*
67.	54816	Anvil-7/16" Hex (4071)
75.	35311	Washer
76.	10052	Bearing—Needle Thrust

\*Order Quantity As Required

FURNISH CATALOG, SERIAL, AND MODEL NUMBER  
WHEN ORDERING PARTS

**SIoux  
TOOLS INC.**

250 SNAP-ON DRIVE ■ PO BOX 1596 ■ MURPHY, NC 28906 ■ USA ■

Printed In U.S.A.

This pdf incorporates the following model numbers:

4073, 4074, 4070, 4071