



NOTE: Parts are no longer available for this tool.

The manual will continue on the next page.



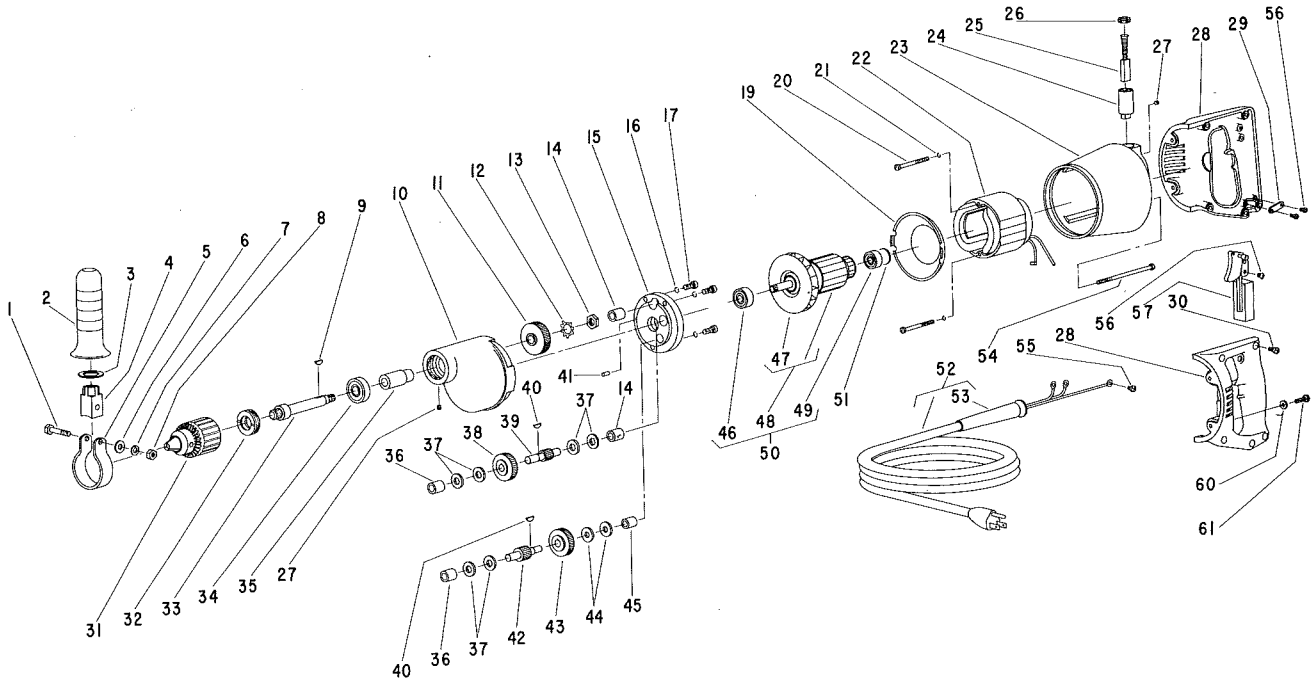
**SIoux
TOOLS INC.**

2901 FLOYD BOULEVARD ■ SIOUX CITY, IOWA 51102 ■

Form A656A
Dated 8/82
E.D. 4/83

Parts List for No. 1708 SIoux HIGH SPEED DRIVER

Serial No. Starting With "B"



Furnish Catalog, Serial and Model Number When Ordering Parts

Parts List for No. 1708 SIOUX HIGH SPEED DRIVER

Serial No. Starting With "B"

Furnish Catalog, Serial and Model Number When Ordering Parts

Fig- ure	Part No.	Name	Fig- ure	Part No.	Name
1	12002	Case-Gear	19	53033	Assy.-Handle
2	19621	Assy.-Pinion & Slinger	20	35233	Strap
3	10290	Bearing-Ball	21	06370	Screw-#6 (5)
4	25027	Lock-Bearing	22	06371	Screw-#6 (3)
5	07204	Screw #10 (3)	23	35234	Washer (4)
6	21569A	Fan	24	07233	Screw #10 (4)
7	28696	Armature-With Fan	25	18204	Switch
	16856	Armature-With Fan & Brgs	26	07129	Screw #10 (4)
8	10220	Bearing-Ball	27	04219	Relief-Strain
9	35232	Slug-Bearing	28	18418	Assy.-Cord & Terminals
10	25044	Plate-Baffle		18417	Assy.-Cord & Terminals (30 ft.)
11	07145	Screw #10 (2)	30	23694	Assy.-Bearing Support
12	09724	Washer-Lock #10 (2)	31	08279	Screw 1/4"
13	28580	Field	* 32	22916	Spindle-Tool
14	12339	Housing (Includes Fig's. 15, 17)	33	21214	Spring-Tension
15	18076	Holder-Brush (2)	34	19055	Gear-Spiral Bevel
16	18004	Brush (2)	35	10113	Bearing-Ball
17	07000	Screw-Set #10 (2)		20481	Plate-Name
18	18120	Cap-Brush Holder (2)		09954	Screw (2)

*Order Qty. As Needed



**SIOUX
TOOLS INC.**

2901 FLOYD BOULEVARD ■ SIOUX CITY, IOWA 51102 ■

PRINTED IN U.S.A.

This pdf incorporates the following model numbers:

1708