



**NOTE: Parts are no longer available for this tool.**

**The manual will continue on the next page.**

**SIoux****TOOLS**

## Parts List for No. 1708 Sioux High Speed Driver

Furnish Catalog, Serial and Model Number When Ordering Parts

| Fig-<br>ure | Part<br>No. | Name                             | Fig-<br>ure | Part<br>No. | Name                            |
|-------------|-------------|----------------------------------|-------------|-------------|---------------------------------|
| 1           | 12002       | Case-Gear                        | 19          | 53033       | Assy.-Handle                    |
| 2           | 19605       | Assy.-Pinion & Slinger           | 20          | 35233       | Strap                           |
| 3           | 10127       | Bearing-Ball                     | 21          | 06370       | Screw-#6 (5)                    |
| 4           | 25027       | Lock-Bearing                     | 22          | 06371       | Screw-#6 (3)                    |
| 5           | 07204       | Screw #10 (3)                    | 23          | 35234       | Washer (4)                      |
| 6           | 21569A      | Fan                              | 24          | 07233       | Screw #10 (4)                   |
| 7           | 28554       | Armature-With Fan                | 25          | 18204       | Switch                          |
|             | 16773       | Armature-With Fan & Brgs.        | 26          | 07129       | Screw #10 (4)                   |
| 8           | 10190       | Bearing-Ball                     | 27          | 04219       | Relief-Strain                   |
| 9           | 35232       | Slug-Bearing                     | 28          | 18418       | Assy.-Cord & Terminals          |
| 10          | 25044       | Plate-Baffle                     |             | 18417       | Assy.-Cord & Terminals (30 ft.) |
| 11          | 07136       | Screw #10 (2)                    | 30          | 23694       | Assy.-Bearing Support           |
| 12          | 09724       | Washer-Lock #10 (2)              | 31          | 08279       | Screw 1/4"                      |
| 13          | 28580       | Field                            | * 32        | 22916       | Spindle-Tool                    |
| 14          | 12339       | Housing (Includes Fig's. 15, 17) | 33          | 21214       | Spring-Tension                  |
| 15          | 18076       | Holder-Brush (2)                 | 34          | 19055       | Gear-Spiral Bevel               |
| 16          | 18004       | Brush (2)                        | 35          | 10113       | Bearing-Ball                    |
| 17          | 07000       | Screw-Set #10 (2)                |             | 20481       | Plate-Name                      |
| 18          | 18120       | Cap-Brush Holder (2)             |             | 09954       | Screw (2)                       |

\* Order Qty. As Needed

# SIoux TOOLS INC.

2901 FLOYD BOULEVARD ■ SIOUX CITY, IOWA 51102 ■

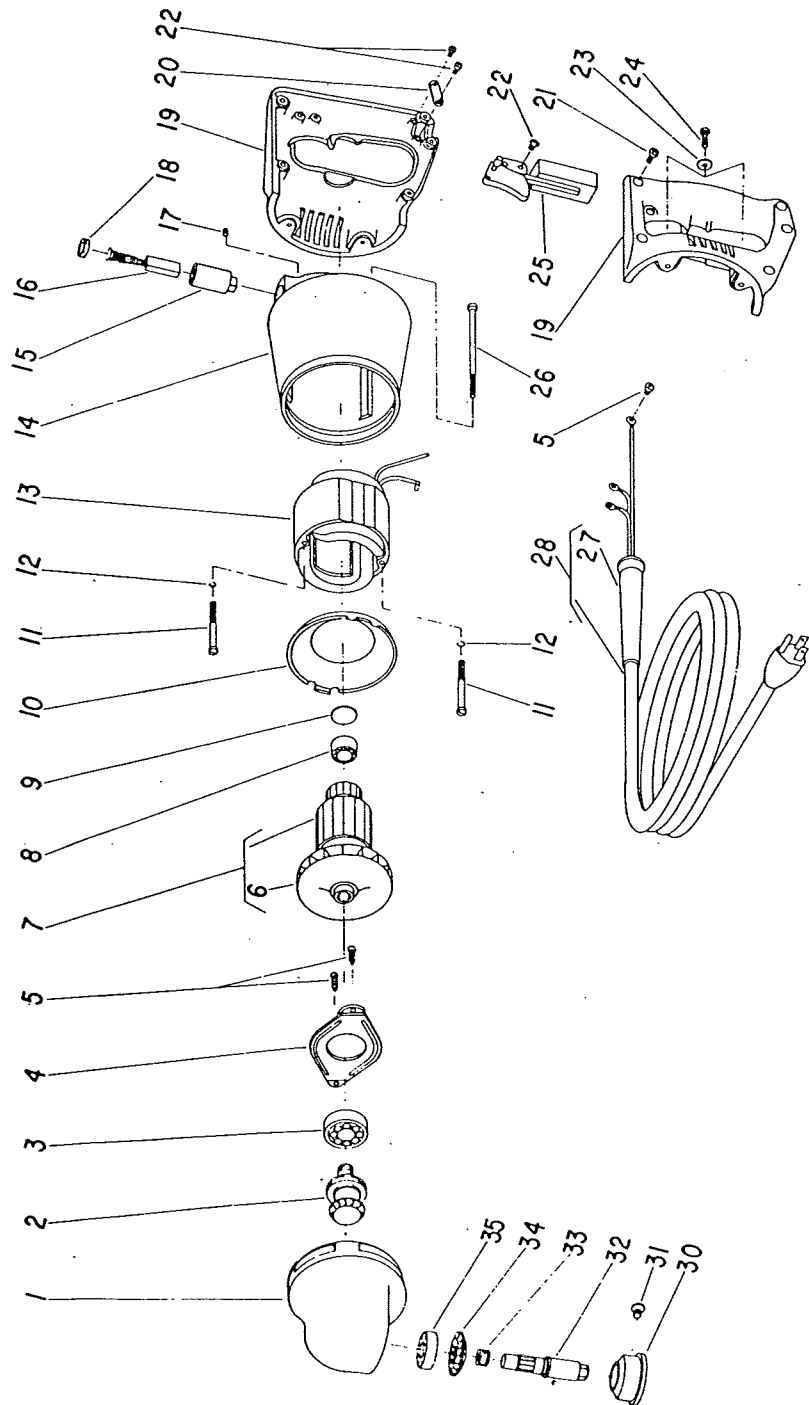
PRINTED IN U.S.A.

**SIoux**



**TOOLS**

# Parts List for No. 1708 Sioux High Speed Driver



Furnish Catalog, Serial and Model Number When Ordering Parts

This pdf incorporates the following model numbers:

1708