



NOTE: Parts are no longer available for this tool.

The manual will continue on the next page.

Parts List for No. 7020 1" IMPACT WRENCH

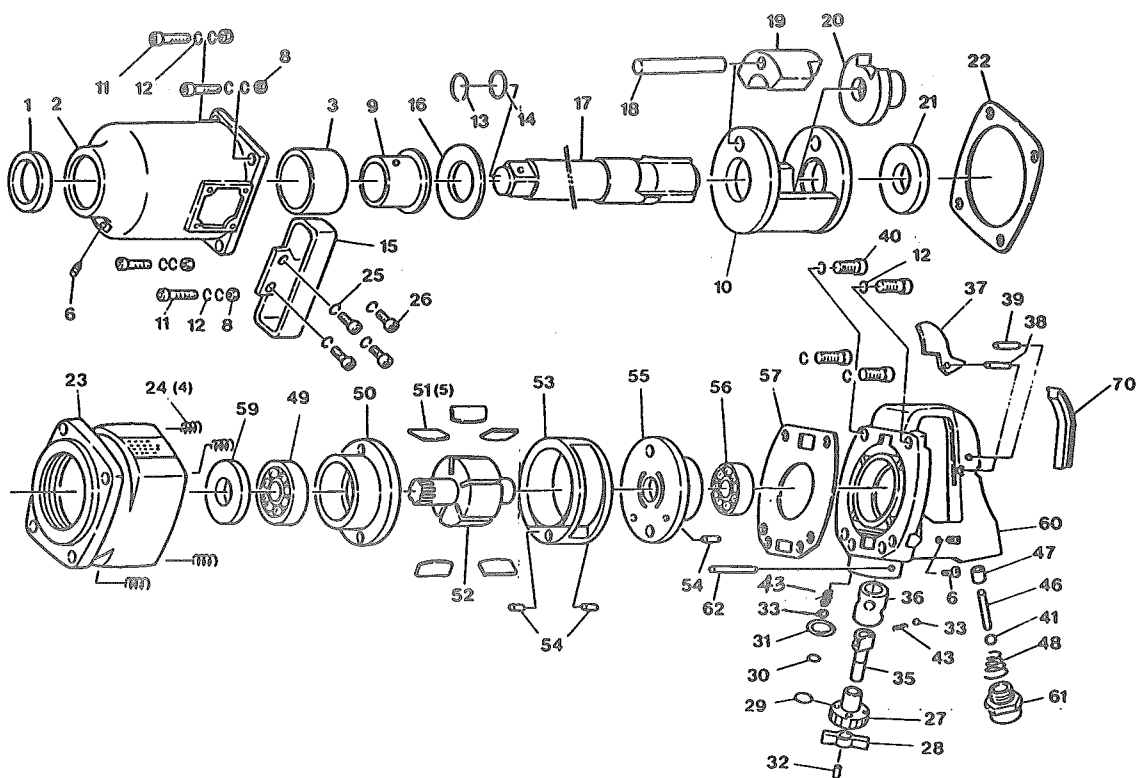


Fig- ure	Part No.	Name	Fig- ure	Part No.	Name
1	1J220	Oil Seal	33	1J275	Steel Ball (2)*
2	1J221	Hammer Case	35	1J271	Reverse Valve
3	1J225	Fixed Bushing	36	1J268	Valve Bushing
6	1J466	Hex. Screw (2)*	37	1J257	Throttle Lever
8	1J224	Hexagon Nut (4)*	38	1J258	Spring Pin
9	1J226	Hammer Case Bushing	39	1J259	Spring Pin
10	1J232	Hammer Frame	40	1J256	Hexagon Socket Bolt (4)*
11	1J222	Hexagon Socket Bolt (4)*	41	1J263	Ball
12	1J223	Spring Washer (12)*	43	1J270	Spring (2)*
13	1J228	Retainer Ring	46	1J262	Throttle Pin
14	1J229	"O" Ring	47	1J261	Throttle Bushing
15	1J243	D-Type Handle	48	1J264	Conical Spring
16	1J227	Thrust Washer	49	1J246	Ball Bearing
17	1J230	Anvil	50	1J247	Front End Plate
18	1J231	Hammer Pin	51	1J248	Rotor Vane (Set of 5)
19	1J233	Hammer	52	1J249	Rotor
20	1J234	Driver	53	1J250	Cylinder
21	1J235	Spacer	54	1J251	Spring Pin (3)*
22	1J237	Motor Case Packing	55	1J252	Rear End Plate
23	1J241	Motor Case	56	1J253	Ball Bearing
24	1J242	Helical Insert (4)*	57	1J254	Motor Case Packing
25	1J244	Spring Washer (4)*	59	1J280	Bearing Case
26	1J245	Hexagon Socket Bolt (4)*	60	1J260	Handle Frame
27	1J272	Adjust Valve	61	1J266	Air Inlet Bushing
28	1J273	Reverse Lever	62	1J645	Spring Pin
29	1J278	"O" Ring	70	1J646	Rubber Guard
30	1J573	"O" Ring			
31	1J276	Stop Ring			
32	1J045	Spring Pin			

*Order Quantity As Needed

DISTRIBUTED BY SIOUX TOOLS INC.
2901 FLOYD BOULEVARD ■ SIOUX CITY, IOWA 51102 ■

This pdf incorporates the following model numbers:

7020