

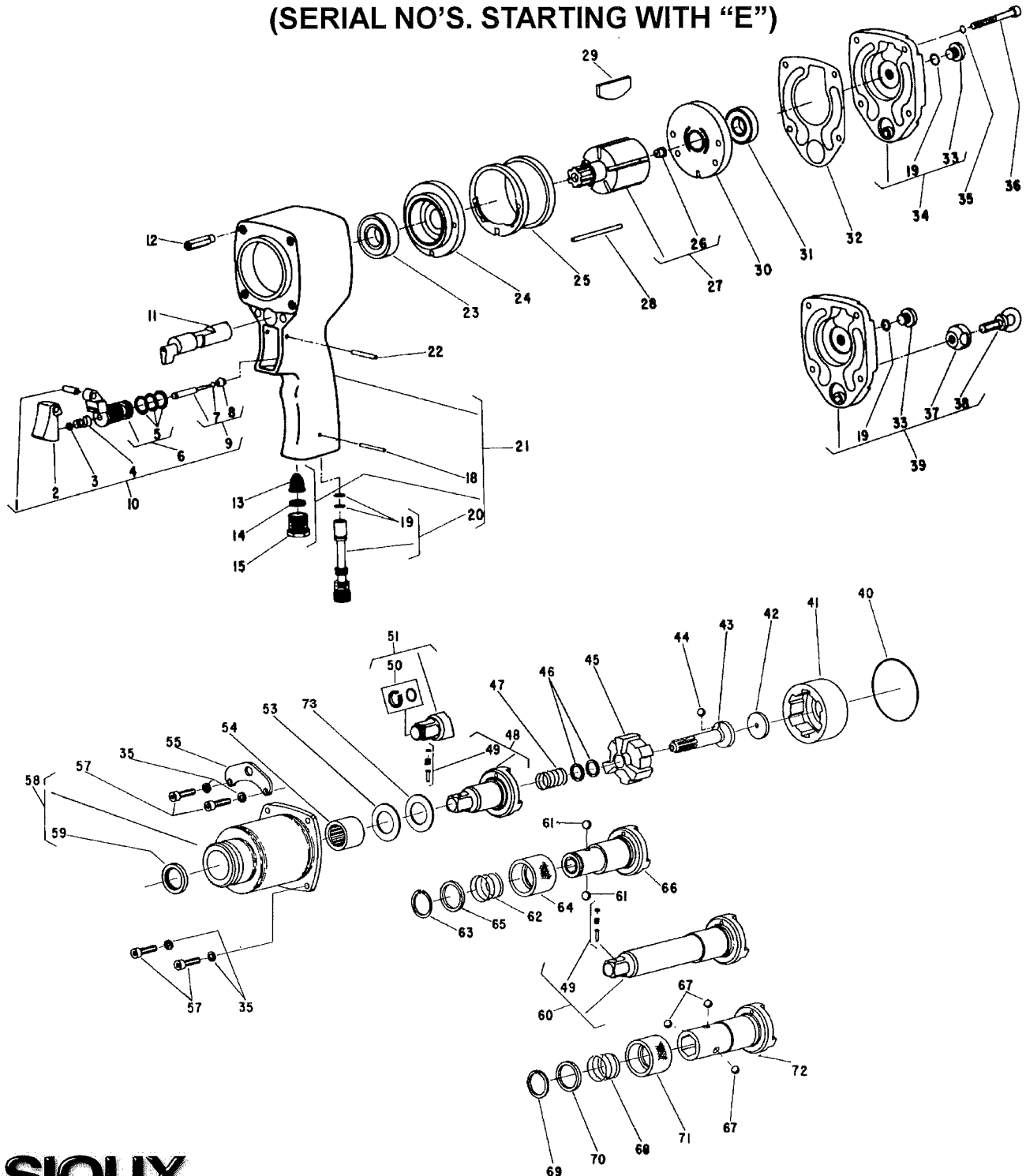


NOTE: Parts are no longer available for this tool.

The manual will continue on the next page.



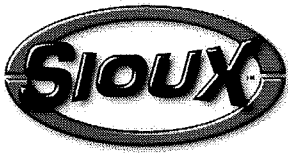
PARTS LIST FOR 4034, 4034B, 4034C, 4034D, 4034F, 4036, 4036B AIR IMPACT WRENCHES & 4034E, 4036D SCREW DRIVERS (SERIAL NO'S. STARTING WITH "E")



SIoux
TOOLS INC.

250 SNAP-ON DRIVE ■ PO BOX 1596 ■ MURPHY, NC 28906 ■ USA ■

Printed In U.S.A.



PARTS LIST FOR
4034, 4034B, 4034C, 4034D, 4034F, 4036, 4036B
AIR IMPACT WRENCHES
& 4034E, 4036D SCREW DRIVERS
(SERIAL NO'S. STARTING WITH "E")

Fig. No.	Part No.	Description
1.	44754	Bushing
2.	14087	Trigger
3.	21542	Ring—Retainer
4.	21401	Spring—Valve
5.	14312	Ring—"O" (3)*
6.	53258	Ass'y—Valve Seat & "O" Rings
7.	35311	Washer
8.	14325	Valve
9.	53296	Ass'y—Valve
10.	53184	Ass'y—Throttle Valve
11.	11575	Valve—Reversing
12.	44199	Insert (4)*
13.	33993	Screen—Air
14.	21417	Spring
15.	44100	Bushing—Reducing
18.	30625	Pin—Groove
19.	14291	Ring—"O" (3)*
20.	53098	Ass'y—Regulator
21.	53929	Ass'y—Housing (Includes Fig. 12)(4034 Series)
	53950	Ass'y—Housing (Includes Fig. 12)(4036 Series)
22.	30613	Pin—Groove
23.	10247	Bearing—Ball
24.	53927	Plate—Front End
25.	54674	Cylinder
26.	30356	Fitting—Grease
27.	54673	Rotor
28.	54695	Ring—Alignment
29.	43027	Vane—Rotor (Set of 5)
30.	53928	Plate—Rear End
31.	10203	Bearing—Ball
32.	14795	Gasket
33.	08649	Screw
34.	53094	Ass'y—Back Cap
35.	09726	Washer—Lock #10 (8)*
36.	07094	Screw—Soc. Hd. Cap (#10-24 x 1 3/4)(4)*
37.	54135	Nut—Vertical Bail
38.	30665	Bail—Vertical
39.	53150	Ass'y—Housing Cap
40.	04223	Ring—"O"
41.	54648	Driver

Fig. No.	Part No.	Description
42.	54646	Washer—Thrust
43.	65408	Cam
44.	10324	Ball—Steel
45.	65409	Hammer
46.	54819	Washer (Set of 2)
47.	21410	Spring
48.	54760	Anvil (4034)
	54789	Anvil (4034F)
	54763	Anvil (4036)
49.	43890	Ass'y—Socket Retainer (4034, 4034B, 4034F)
	43891	Ass'y—Socket Retainer (4036, 4036B)
50.	53508	Ass'y—Socket Retainer (4034C, 4034D)
51.	54758	Anvil (4034C)
	54759	Anvil 3" Ext (4034D)
53.	10035	Race—Thrust
54.	10051	Bearing—Roller (All Except 4036D)
	10071	Bearing—Roller (4036D)
55.	35062	Bail—Front
57.	07091	Screw—Soc. Hd. Cap (#10-24 X 3/4)(4)*
58.	53926	Ass'y—Hammer Case (Includes Fig. 54) (All Except 4036D)
	53954	Ass'y—Hammer Case (Includes Fig. 54)(4036D)
59.	30661	Seal (All Except 4036D)
	30768	Seal (4036D)
60.	54761	Anvil 3" Ext. (4034B)
	54764	Anvil 3" Ext. (4036B)
61.	10324	Ball—Steel (4034E)(2)*
62.	21414	Spring (4034E)
63.	21526	Ring—Retainer (4034E)
64.	34455	Retainer—Ball (4034E)
65.	34456	Ring—Guide (4034E)
66.	54762	Anvil—7/16" Hex (4034E)
67.	10299	Ball—Steel (4036D)(3)*
68.	21426	Spring (4036D)
69.	21527	Ring—Retainer (4036D)
70.	44319	Ring—Guide (4036D)
71.	44320	Retainer—Ball (4036D)
72.	54765	Anvil—5/8" Hex (4036D)
73.	10321	Bearing—Needle Thrust

*Order Quantity as Needed

Furnish Catalog And Serial Number When Ordering Parts

SIoux
TOOLS INC.

250 SNAP-ON DRIVE ■ PO BOX 1596 ■ MURPHY, NC 28906 ■ USA ■

Printed In U.S.A.

This pdf incorporates the following model numbers:

4034, 4034B, 4034C, 4034D, 4034F, 4036, 4036B, 4034E, 4036E