



NOTE: Parts are no longer available for this tool.

The manual will continue on the next page.

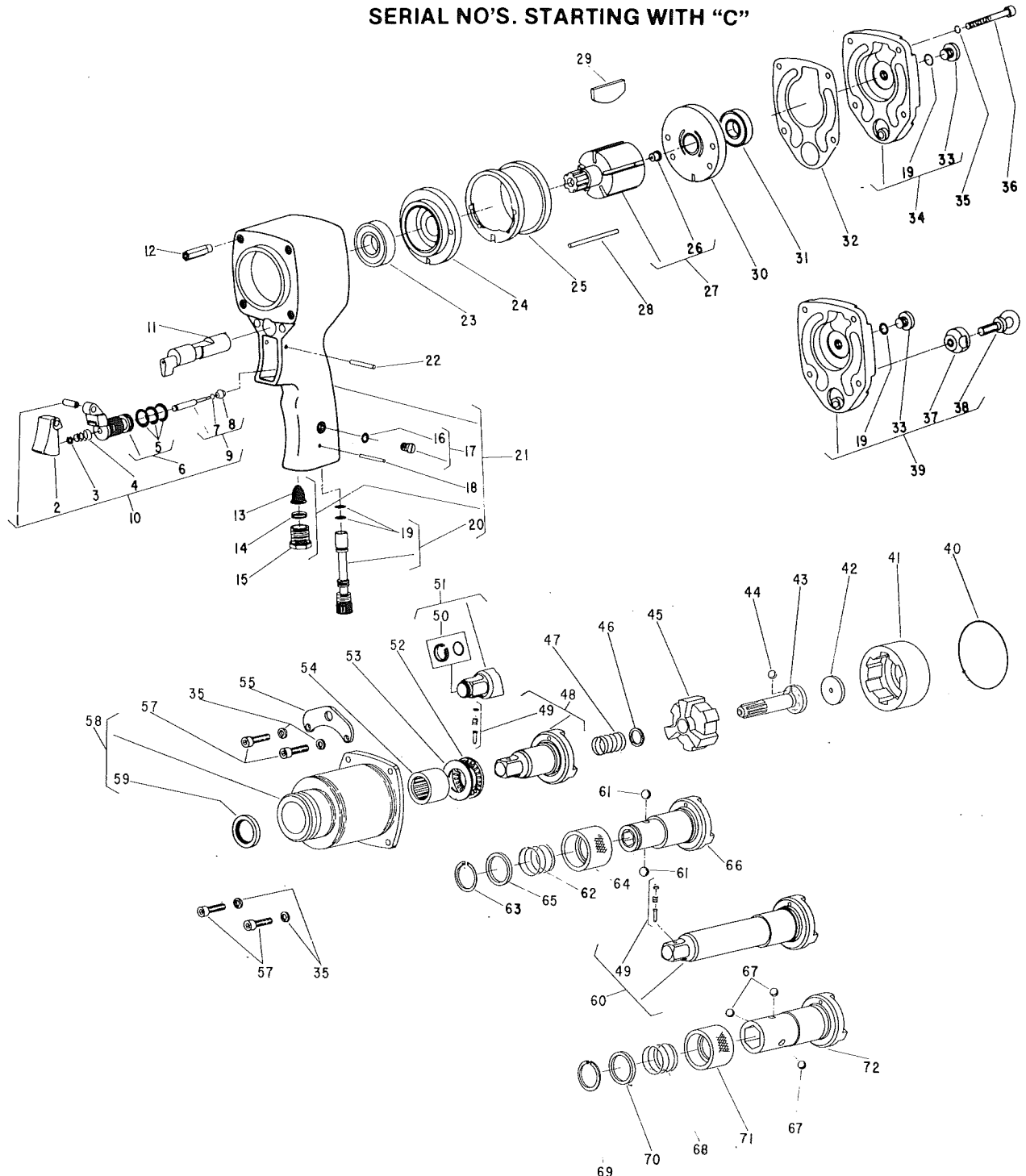


**SIoux
TOOLS INC.**

2901 FLOYD BOULEVARD ■ SIOUX CITY, IOWA 51102 ■

Form No. A615C
Dated 8/81
Supersedes Form A615C
Dated 5/81

**Parts List for
4034, 4034B, 4034C, 4034D, 4034F,
4036, 4036B Air Impact Wrenches
And 4034E, 4036D Screw Drivers
SERIAL NO'S. STARTING WITH "C"**



Furnish Catalog and Serial Number When Ordering Parts

Parts List for 4034, 4034B, 4034C, 4034D, 4034F, 4036, 4036B Air Impact Wrenches And 4034E, 4036D Screw Drivers

SERIAL NO'S. STARTING WITH "C"

Fig- ure	Part No.	Name	Fig- ure	Part No.	Name
1	44754	Bushing	40	04223	Ring—"O"
2	14087	Trigger	41	54648	Driver
3	21542	Ring-Retainer	42	54646	Washer—Thrust
4	21401	Spring-Valve	43	54767	Cam
5	14312	Ring—"O" (3)*	44	10324	Ball—Steel
6	53258	Ass'y.—Valve Seat & "O" Rings	45	54651	Hammer
7	35311	Washer	46	54819	Washer (Set of 2)
8	14325	Valve	47	21410	Spring
9	53296	Ass'y.—Valve	48	54760	Anvil (4034)
10	53184	Ass'y.—Throttle Valve		54789	Anvil (4034F)
11	11575	Valve—Reversing		54763	Anvil (4036)
12	44199	Insert (4)*	49	43890	Ass'y.—Socket Retainer (4034, 4034B, 4034F)
13	33993	Screen—Air		43891	Ass'y.—Socket Retainer (4036 (4036B)
14	21417	Spring	50	53508	Ass'y.—Socket Retainer (4034C), (4034D)
15	44100	Bushing—Reducing	51	54758	Anvil (4034C)
16	14369	Ring—"O"		54759	Anvil 3 " Ext. (4034D)
17	44253	Oiler Screw & "O" Ring	52	10321	Bearing—Needle Thrust
18	30219	Pin—Roll	53	10035	Race—Thrust
19	14291	Ring—"O" (3)*	54	10051	Bearing—Roller (All Except 4036D)
20	53098	Ass'y.—Regulator		10071	Bearing—Roller (4036D)
21	53929	Ass'y.—Housing (Incl's Fig. 12) (4034 Series)	55	35062	Bail—Front
	53950	Ass'y.—Housing (Incl's Fig. 12) (4036 Series)	57	07091	Screw—Soc. Hd. Cap (#10-24X3/4) (4)*
22	30613	Pin—Groove	58	53926	Ass'y.—Hammer Case, (Incl's Fig. 54) (All Except 4036D)
23	10247	Bearing—Ball		53954	Ass'y.—Hammer Case (Incl's Fig. 54) (4036D)
24	53927	End Plate—Front	59	30661	Seal (All Except 4036D)
25	54674	Cylinder		30768	Seal (4036D)
26	30356	Fitting—Grease	60	54761	Anvil 3 " Ext. (4034B)
27	54673	Rotor		54764	Anvil 3 " Ext. (4036B)
28	54695	Ping—Alignment	61	10324	Ball—Steel (4034E) (2)*
29	43027	Vane—Rotor (Set of 5)	62	21414	Spring (4034E)
30	53928	End Plate—Rear	63	21526	Ring—Retainer (4034E)
31	10203	Bearing—Ball	64	34455	Retainer—Ball (4034E)
32	14795	Gasket	65	34456	Ring—Guide (4034E)
33	08649	Screw	66	54762	Anvil—7/16 Hex (4034E)
34	53094	Ass'y.—Back Cap	67	10299	Ball—Steel (4036D) (3)*
35	09726	Washer—Lock #10 (8)*	68	21426	Spring (4036D)
36	07094	Screw—Soc.Hd. Cap #10 — 24x1.3/4 (4)*	69	21527	Ring—Retainer (4036D)
37	54135	Nut—Vertical Bail	70	44319	Ring—Guide (4036D)
38	30665	Bail—Vertical	71	44320	Retainer—Ball (4036D)
39	53150	Ass'y.—Housing Cap	72	54765	Anvil—5/8 Hex (4036D)

•Order Quantity as Needed



**SIoux
TOOLS INC.**

2901 FLOYD BOULEVARD ■ SIOUX CITY, IOWA 51102 ■

This pdf incorporates the following model numbers:

4034, 4034B, 4034C, 4034D, 4034F, 4036, 4036B, 4034E, 4036E