



**NOTE: Parts are no longer available for this tool.**

**The manual will continue on the next page.**

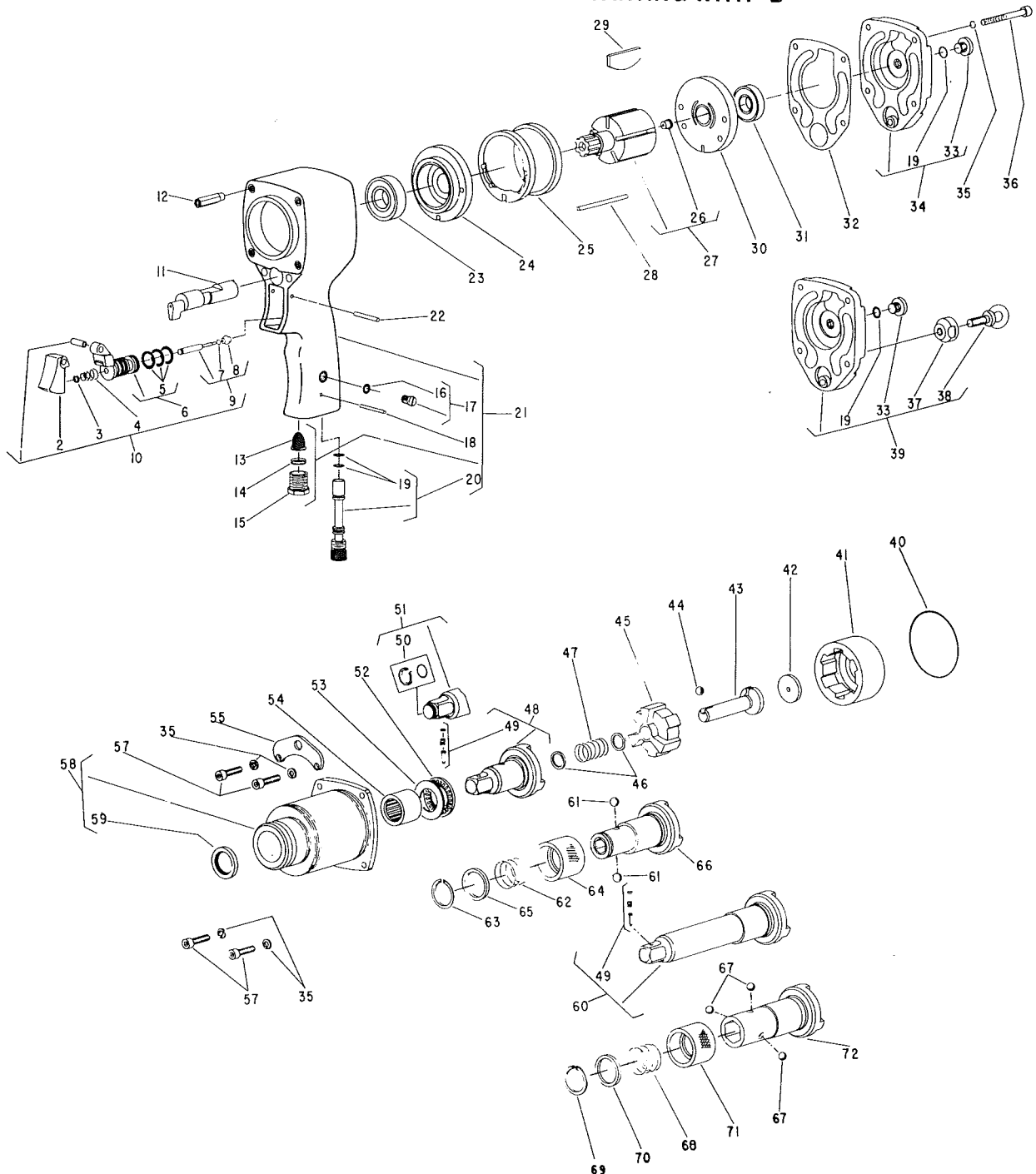


**SIoux  
TOOLS INC.**

2901 FLOYD BOULEVARD ■ SIOUX CITY, IOWA 51102 ■

Form No. A 615B  
Dated 2/83  
Supersedes Form A1615B  
Dated 6/80

**Parts List for  
4034, 4034B, 4034C, 4034D, 4034F,  
4036, 4036B Air Impact Wrenches  
And 4034E, 4036D Screw Drivers  
SERIAL NO'S. UP TO & STARTING WITH "B"**



**Furnish Catalog, Serial and Model Number When Ordering Parts**

# Parts List for 4034, 4034B, 4034C, 4034D, 4034F, 4036, 4036B Air Impact Wrenches And 4034E, 4036D Screw Drivers SERIAL NO'S. UP TO & STARTING WITH "B"

Fig- ure	Part No.	Name
1	44754	Bushing
2	14087	Trigger
3	21542	Ring—Retainer
4	21401	Spring—Valve
5	14312	Ring—"O" (3)*
6	53258	Assy.—Valve Seat & "O" Rings
7	35311	Washer
8	14325	Valve
9	53296	Assy.—Valve
10	53184	Ass'y.—Throttle Valve
11	11575	Valve—Reversing
12	44199	Insert (4)*
13	33993	Screen—Air
14	21417	Spring
15	44100	Bushing—Reducing
16	14369	Ring—"O"
17	44253	Oilier Screw & "O" Ring
18	30219	Pin—Roll
19	14291	Ring—"O" (3)*
20	53098	Ass'y.—Regulator
21	53929	Ass'y.—Housing (Incl's Fig. 12)(4034 Series)
	53950	Ass'y.—Housing (Incl's Fig. 12)(4036 Series)
22	30613	Pin—Groove
23	10247	Bearing—Ball
24	53927	End Plate—Front
25	54674	Cylinder
26	30356	Fitting—Grease
27	54673	Rotor
28	54695	Ping—Alignment
29	43027	Vane—Rotor (Set of 5)
30	53928	End Plate—Rear
31	10277	Bearing—Ball
32	14795	Gasket
33	08649	Screw
34	53094	Ass'y.—Back Cap
35	09726	Washer—Lock #10 (8)*
36	07094	Screw—Soc. Hd. Cap #10 - 24x1 3/4 (4)*
37	54135	Nut—Vertical Bail
38	30665	Bail—Vertical
39	53150	Ass'y.—Housing Cap

Fig- ure	Part No.	Name
40	04223	Ring—"O"
41	54648	Driver
42	54646	Washer—Thrust
† 43		Cam
44	10324	Ball—Steel
45	54651	Hammer
46	54645	Washer
47	21410	Spring
† 48		Anvil (4034)
		Anvil (4034F)
		Anvil (4036)
49	43890	Ass'y.—Socket Retainer (4034, 4034B, 4034F)
	43891	Ass'y.—Socket Retainer (4036, 4036B)
50	53508	Ass'y.—Socket Retainer (4034C, 4034D)
† 51		Anvil (4034C)
		Anvil 3" Ext. (4034D)
52	10321	Bearing—Needle Thrust
53	10035	Race—Thrust
54	10051	Bearing—Roller (All Except 4036D)
	10071	Bearing—Roller (4036D)
55	35062	Bail—Front
57	07091	Screw—Soc. Hd. Cap (#10-24x3/4) (4)*
58	53926	Ass'y.—Hammer Case, (Incl's Fig. 54)(All Except 4036D)
	53954	Ass'y.—Hammer Case (Incl's Fig. 54)(4036D)
59	30661	Seal (All Except 4036D)
	30768	Seal (4036D)
† 60		Anvil 3" Ext. (4036B)
		Anvil 3" Ext. (4036B)
61	10324	Ball—Steel (4034E)(2)*
62	21414	Spring (4034E)
63	21526	Ring—Retainer (4034E)
64	34455	Retainer—Ball (4034E)
65	34456	Ring—Guide (4034E)
† 66		Anvil—7/16 Hex (4034E)
67	10299	Ball—Steel (4036D)(3)*
68	21426	Spring (4036D)
69	21527	Ring—Retainer (4036D)
70	44319	Ring—Guide (4036D)
71	44320	Retainer—Ball (4036D)
† 72		Anvil—5/8 Hex (4036D)

\*Order Quantity As Needed

† THE INDIVIDUAL ANVILS OR CAM ARE NO LONGER AVAILABLE & THEREFORE AN ANVIL & CAM CONVERSION SET MUST BE ORDERED.

SEE LISTING;



## SIoux TOOLS INC.

2901 FLOYD BOULEVARD ■ SIOUX CITY, IOWA 51102 ■

UNIT NO.	CONVERSION SET PART NO.
4034	63066
4034B	63067
4034C	63063
4034D	63065
4034E	63086
4034F	63068
4036	63069
4036B	63070
4036D	63087

PRINTED IN U.S.A.

This pdf incorporates the following model numbers:

4034, 4034B, 4034C, 4034D, 4034F, 4036, 4036B, 4034E, 4036E