



NOTE: Parts are no longer available for this tool.

The manual will continue on the next page.

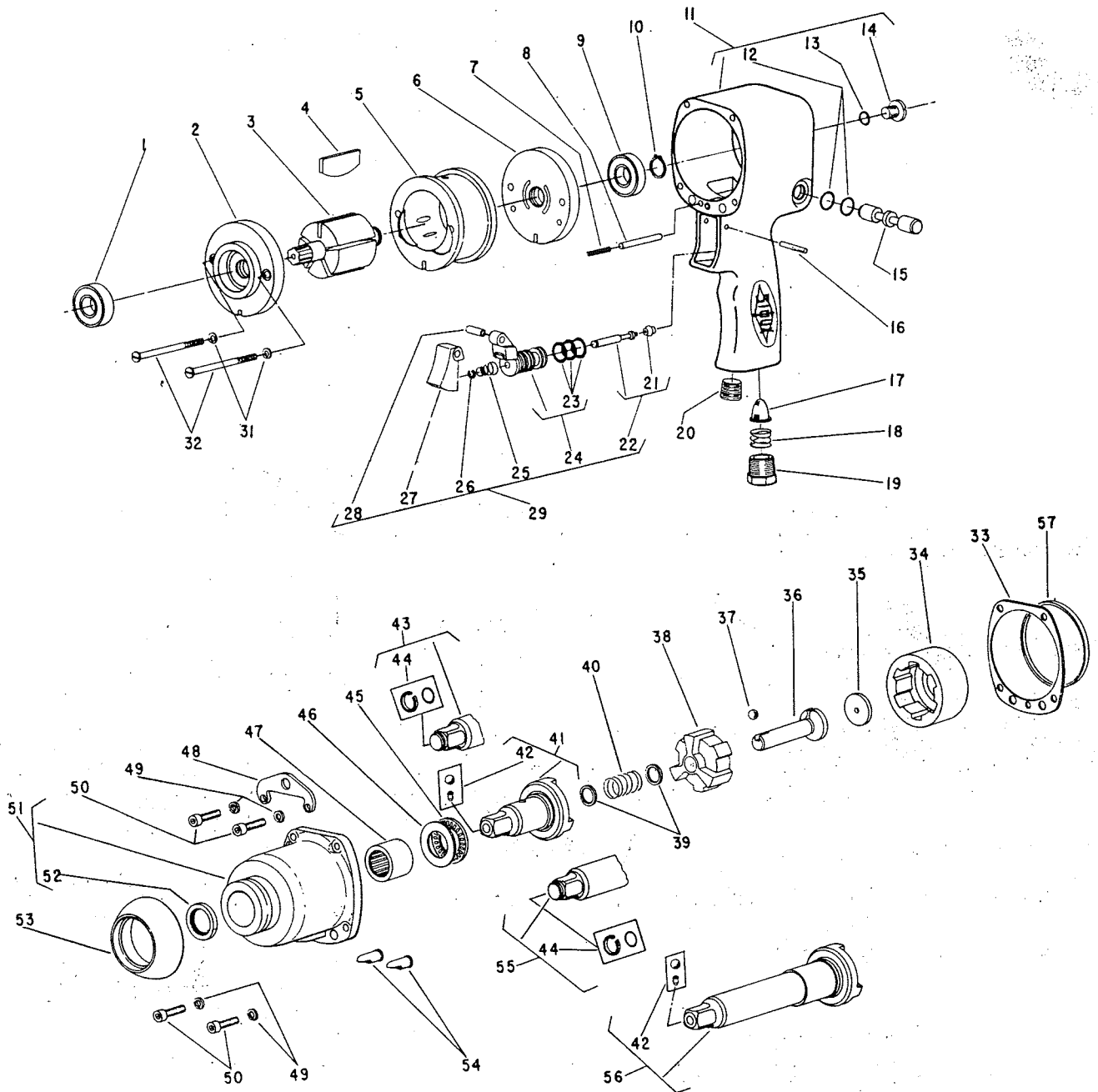


**SIoux
TOOLS INC.**

2901 FLOYD BOULEVARD ■ SIOUX CITY, IOWA 51102 ■

Form A607B
Dated 2/83
Supersedes Form A607
Dated 11/80

Parts List for Air Impact Wrench No's. 100, 100F, 100E, 100FE SERIAL NO'S. UP TO & STARTING WITH "B"



Furnish Catalog, Serial and Model Number When Ordering Parts

Parts List for Air Impact Wrench No's. 100, 100F, 100E, 100FE

Furnish Catalog, Serial and Model Number When Ordering Parts

SERIAL NO'S. UP TO & STARTING WITH "B"

Fig- ure	Part No.	Name	Fig- ure	Part No.	Name
1	10247	Bearing—Ball	31	09712	Washer—Lock #8 (2)*
2	10538	Plate—Front End	32	06594	Screw (2)*
3	54673	Rotor	33	14785	Gasket
4	43027	Vane—Rotor (Set of 5)	34	54648	Driver
5	54674	Cylinder	35	54646	Washer—Thrust
6	10539	Plate—Rear End	† 36		Cam
7	41222	Spring—Rev. Valve Stop	37	10324	Ball—Steel
8	44852	Plunger—Rev. Valve Stop	38	54651	Hammer
9	10277	Bearing—Ball	39	54645	Washer
10	21459	Ring—Retaining	40	21410	Spring
11	53941	Housing—(Incl.'s Fig. 20)	† 41		Anvil (100)
12	04220	Ring—"O" (2)*	42	53486	Assy.—Socket Retainer (100, 100F)
13	14291	Ring—"O"	† 43		Anvil (100E)
14	08649	Screw	44	53508	Assy.—Socket Retainer (100E, 100FE)
15	44853	Valve—Reversing	45	10321	Bearing—Needle Thrust
16	30613	Pin—Groove	46	10035	Race—Thrust
17	33993	Screen—Air	47	10070	Bearing—Roller
18	21417	Spring	48	35231	Bail—Front
19	44100	Bushing—Reducer	49	09726	Washer—Lock #10 (4)*
20	30359	Plug—Pipe	50	07091	Screw—Soc. Hd. Cap (10-24 x 3/4)(4)*
21	14325	Valve	51	53906	Assy.—Hammer Case (Incl.'s. Fig. 47)
22	53246	Ass'y.—Plunger Valve	52	40053	Seal
23	14312	Ring—"O" (3)*	53	14299	Protector—Rubber
24	53258	Assy.—Valve Seat & "O" Ring	54	14025	Deflector—Air
25	21401	Spring—Valve	† 55		Anvil 3" Ext. (100FE)
26	21542	Ring—Retaining	† 56		Anvil 3" Ext. (100F)
27	53182	Trigger—Adjustable	57	54521	Spacer
28	44754	Bushing			
29	53245	Ass'y.—Adj. Throttle Valve			

*Order Quantity As Needed

† THE INDIVIDUAL ANVILS OR CAM ARE NO LONGER AVAILABLE & THEREFORE AN ANVIL & CAM CONVERSION SET MUST BE ORDERED.

SEE LISTING;

UNIT NO.	CONVERSION SET PART NO.
100	63066
100F	63067
100E	63063
100FE	63065



**SIoux
TOOLS INC.**

2901 FLOYD BOULEVARD ■ SIOUX CITY, IOWA 51102 ■

This pdf incorporates the following model numbers:

100, 100G, 100E, 100FE